



2011
EDITION

The Agilent Instrument and Accessories Catalog

Life Sciences & Chemical Analysis

The Measure of Confidence



Agilent Technologies

Welcome Agilent Technologies' portfolio of scientific tools is constantly evolving to serve the ever-changing needs of academic and commercial laboratories everywhere. This guidebook provides a brief overview of our main products and services for life sciences and chemical analysis.

Here you'll find descriptions of our most popular gas and liquid chromatography systems, columns and other consumables, mass spectrometry systems, atomic and molecular spectroscopy instruments, NMR spectroscopy systems, vacuum products, genomic microarrays, target enrichment for next-generation sequencing, PCR and qPCR instruments, reagents, automation solutions and software.

If you'd like access to the entire portfolio of Agilent products for chemical analysis and biological research, visit **www.chem.agilent.com**

Visit **www.agilent.com/chem/catalog** to order or download "The Essential Chromatography and Spectroscopy Catalog 2011-2012 Edition".

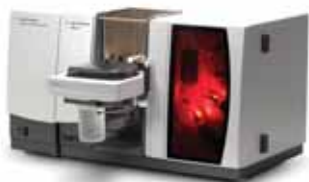
Table of Contents	Agilent Atomic Spectroscopy (AA, ICP-OES, ICP-MS).....	3
	GC and GC/MS Products Solutions	6
	LC and LC/MS Products.....	11
	Software and Informatics Solutions	18
	Dissolution Solutions	19
	Agilent Molecular Spectroscopy Solutions	20
	Bioanalyzer Electrophoresis Solutions.....	23
	Electrophoresis Solutions	24
	Microarray Solutions	26
	PCR and qPCR Solutions.....	27
	Research Products (NMR, MRI, XRD)	28
	Automation Solutions	30
	Service and Support for Instrument Systems.....	34
	Columns and Supplies.....	35

Atomic Absorption Spectrometers

Agilent's range of Atomic Absorption (AA) spectrometers is productive, user-friendly and utterly reliable. The instruments enable analysts to extend their performance and output boundaries, while being equally at home in routine laboratories where reliability and simple operation are vital. With the world's fastest flame AA, the world's most sensitive furnace AA, straightforward software and unbeaten instrument ruggedness and reliability, you can be sure that an Agilent AA will give you answers you can trust.

Agilent 240FS and 280FS AA

Agilent's 240FS/280FS AA are the world's fastest, and most productive flame AA systems, with Fast Sequential capabilities ensuring high performance and lower running costs. Able to handle multi-element suites with ease, they are ideal for food and agriculture or any high throughput labs.



Agilent 240Z and 280Z AA

Agilent's 240Z and 280Z AA Zeeman Graphite Furnace AA (GFAA) systems are productive and precise, providing superior furnace performance and accurate background correction.



Agilent 240FS/240Z Duo AA

The 240FS/240Z Duo AA offers simultaneous flame and furnace operation that delivers the lowest cost per analysis, making it ideal for busy environmental laboratories.



Agilent 140 and 240 AA

Agilent's 140 and 240 AA combine flexibility with reliable hardware, providing budget-sensitive users with a high performance AA for routine flame/furnace/vapor analyses.



Agilent 50 and 55 AA

Agilent's 50 and 55 AA standalone instruments are rugged and reliable, making them ideal for remote sites and harsh environments.

ICP-OES

Agilent's ICP-OES range offers the finest performance, speed and flexibility. The range covers the needs of all users from budget conscious labs to those requiring unrivalled performance and productivity.

Agilent 700 Series ICP-OES

The world's most productive high performance simultaneous ICP-OES

The 700 Series ICP-OES feature an advanced optical design with temperature-controlled optics and no moving parts ensuring superb stability for excellent long term precision. An exceptionally fast warm-up time allows you to start analyzing your samples quickly. Agilent's superior plasma performance allows direct analysis of samples ranging from organic solvents to industrial waste and brines, minimizing sample preparation times. With extended dynamic range, robust plasma and one view, one step measurement of major, minor, and trace elements, the Agilent 700 Series ICP-OES gives you maximum confidence in your results. Dedicated axial and radial versions of each model are available.

Axially viewed Agilent ICP-OES models (710/720/730)



The ICP-OES models 710/720/730 are optimized to ensure maximum sensitivity for routine trace level applications with dissolved solids content up to 5%, including the determination of trace and toxic elements in soils and waters. Featuring an innovative cooled cone interface, this eliminates the use of expensive shear gases, saving you money.

Radially viewed Agilent ICP-OES models (715/725/735)



The ICP-OES models 715/725/735 offer the benefits of robust operation and programmable viewing height so you can select the optimum plasma viewing position to reduce background and eliminate interferences. The radially viewed plasma is vertically oriented, venting exhaust vapors immediately for reduced injector blockage and providing long term stable performance with very high levels of dissolved solids. This makes it ideal for use in chemicals manufacture, wear metals analysis, petrochemical production and precious metals refining.

ICP-MS

Completing Agilent's line-up of inorganic analytical instrumentation is the Agilent 7700 Series ICP-MS. The 7700 Series has redefined the capabilities of ICP-MS with unique and innovative technologies that provide unparalleled performance.

Agilent 7700 Series ICP-MS

Extraordinary design. Unparalleled performance.

As ICP-MS has evolved into the premier technique for trace and ultra trace metals analysis, Agilent has been at the forefront of development and design, introducing many important innovations and achieving unrivalled sales success. With the 7700 Series, Agilent continues to shape the ICP-MS landscape by increasing performance, reducing interferences and improving productivity – all while making the technology easier to use, maintain and service. The 7700 Series consists of 3 models, the 7700x, 7700s and new 7700e.



Agilent 7700x ICP-MS

Powerful ICP-MS workhorse for routine, high throughput and high matrix applications

The 7700x is configured for routine analysis of high matrix samples, and includes High Matrix Introduction (HMI) capability for analysis of very high matrix samples as standard. With its high temperature plasma (resulting in lower oxide interferences), matrix tolerant interface and 9 orders dynamic range, the 7700x provides the ideal combination of robustness, sensitivity and analytical range required from a workhorse instrument.

The 7700x ICP-MS also retains the flexibility to handle research applications, and includes features expected from the highest specification ICP-MS systems (such as temperature-controlled spray chamber; separate nebulizer and make-up gas controls; high transmission ion lens and true hyperbolic quadrupole).



Agilent 7700s ICP-MS

High performance for ultratrace semiconductor applications

The 7700s is configured for the ultratrace elemental analysis of high purity materials such as those monitored in the semiconductor industry. With a high efficiency sample introduction system, platinum interface cones, 5th plasma gas line (for addition of optional carrier gases), and second (reaction) cell gas line as standard – the 7700s offers the highest performance for the removal of intense interferences in known and consistent matrices.



Agilent 7700e ICP-MS

Simplified ICP-MS for routine applications

The 7700e offers a cost-effective introduction to high performance ICP-MS, with simplified routine operation for many standard applications. It includes He mode ORS³ for reliable interference removal, and core MassHunter software functionality. It provides a simple, highly automated user interface and standardized hardware configuration, for simple operation in a range of common applications.



A Comprehensive Portfolio from the Leader in Gas Chromatography

Agilent provides the broadest selection of gas chromatography (GC) and gas chromatography/mass spectrometry (GC/MS) systems, support, and supplies in the industry. So whether you need flexible, reliable hardware and software for complex research; simple, robust systems for routine production environments; or fast, rugged portable solutions for real-time measurements in the plant or in the field, we have a GC or GC/MS to meet your analytical and business challenges.



Agilent 7890A GC System

All the elements for perfect chemistry

Adding an exciting new chapter to a 40-year history of GC leadership, Agilent's 7890A GC gives you everything you need to take your lab to the next level of GC and GC/MS performance, including advanced separation capabilities, powerful new productivity enhancements and real-time self-monitoring instrument intelligence. Faster oven cool-down and backflushing let you get more done in less time, at a lower cost per sample. Fifth-generation Electronic Pneumatics Control (EPC) and digital electronics set a new benchmark for pressure setpoint and retention time locking precision (0.001 psi) and help make the 7890A our most dependable GC ever.



Agilent LTM Series II Rapid Heating/Cooling for 7890A GC

Dramatically increase sample throughput

Customers demand greater productivity in many laboratory GC applications. Agilent LTM (Low Thermal Mass) Series II technology addresses these growing needs. This technology combines a fused silica capillary column with heating and temperature sensing components wound around it. The LTM Series II design heats and cools the column very efficiently for significantly shorter analytical cycle times as compared to conventional air-bath GC oven techniques involving much higher thermal mass.

Agilent 490 Micro GC

The "Measure Anywhere" Micro GC

The Agilent 490 Micro GC is a rugged, compact, laboratory quality gas analysis platform that always delivers the information you need, whenever and wherever you need it. When the composition of gas mixtures is critical, this fifth generation micro-gas chromatograph generates more data in less time for faster, and better business decisions. The 490 Micro GC is designed to provide maximum flexibility and ease-of-use for engineers and analysts in a variety of industries.



Automation Solutions to Accelerate GC Sample Processing

Agilent can help you automate just about any GC sample prep workflow, with improved repeatability and often with considerable costs savings. And we can bring a measurably higher level of precision and performance to sample introduction, no matter what type of samples you are processing.

Agilent 7696A Sample Prep WorkBench

Automating sample prep of analytical samples and standards

The Agilent 7696A Sample Prep Workbench offers customers increased productivity through automation consisting of easy-to-use software and hardware. In addition, the 7696A can reduce the cost per sample because it consumes smaller amounts of chemicals and solvents, produces less waste, and does not require glassware other than sample vials. Finally, the 7696A can reduce laboratory workers' exposure to chemicals, providing potential safety benefits in the workplace.



7693A Automatic Liquid Sampler

Productivity, performance, and flexibility

The Agilent 7693A Automatic Liquid Sampler (ALS) ushers in a new era of productivity, performance, and flexibility. The 7693A builds on the proven Agilent autosampler technologies that have worked reliably for customers in the past, including dual simultaneous injection and fast injection. But the 7693A takes it one step further – adding basic sample preparation capabilities such as dilution, internal standard addition, heating, and more. So whether you want to automate sample injection or the entire sample preparation and injection process, the 7693A is the optimal solution for maximum productivity, performance, and flexibility within many labs.



Count on the Industry's Best GC/MS Systems for Consistent, Routine Analysis



Agilent 220 Ion Trap GC/MS

Versatility for every application

The Agilent 220 MS Ion Trap, now coupled with the industry leading 7890A GC, is a highly sensitive mass spectrometer that delivers outstanding qualitative and quantitative data in a range of applications. This simple and robust system is easy to operate and maintain and offers easy upgrade path to CI and MS/MS any time.



Agilent 240 Ion Trap GC/MS

Leading the way in GC/MS analysis

The Agilent 240 MS Ion Trap, now coupled with the industry leading 7890A GC, delivers unparalleled capabilities for both research and routine applications. Advanced ionization, including positive and negative chemical ionization, improves selectivity and limits of detection. Enhanced scanning techniques ensure compound confirmation. The MS/MS and MSⁿ reduce matrix influences and provide more detailed structural information. The software comes with a full complement of productivity, reporting, and regulatory compliance tools.



Agilent 7000 Series Triple Quadrupole GC/MS System

Sensitivity, speed and reliability

The Agilent 7000B Quadrupole GC/MS/MS is the latest addition to Agilent's MS portfolio. Scientists performing "target compound analysis" in SIM mode on complex samples will find many ways to use its increased selectivity and sensitivity. MS/MS reduces sample prep, shortens analysis cycles, eliminates false results, and simplifies data review for improved productivity. Based upon time-tested MSD components, the 7000B sets a higher standard for robust GC/MS/MS operation. The entire system and analysis process are supported by MassHunter software, which is designed to make MS analyses easier – from tuning to final report.



Agilent 7200 Q-TOF for GC/MS

Minimize false positives and confidently analyze both targets and unknowns

Agilent's 7200 Q-TOF redraws the boundaries of GC/TOF technology by combining the separation power of Agilent's 7890A GC with the high-resolution spectral performance of a TOF analyzer. With its innovative ion source design, high temperature quartz mass filter, high efficiency collision cell, 32 Gbit/sec data sampling, and temperature-stabilized ADC TOF electronics, the Agilent 7200 Q-TOF delivers the highest detection selectivity and accurate molecular formula for structural confirmation. And that allows you to meet your toughest analytical challenges with confidence.



Agilent 5975 Series GC/MSD

Performance, productivity and confidence

Welcome to the next generation of the industry-proven Agilent 5975 Series MSD – the most popular GC/MS of all time. The Agilent 5975C inert MSD with its Triple-Axis Detector gives you innovative design features to boost your lab's productivity and advanced analytical capabilities that enhance your results – and your confidence. In addition to delivering better MS resolution and the lowest mass deviation available, the system offers superior sensitivity and spectral integrity. Advanced analysis routines let you get more information from every run, and the latest version of automated spectral deconvolution, identification, and quantification software provides higher quality analyses with even less operator time and attention.



Agilent 5975E GC/MSD System

Dependable, consistent, affordable routine analysis

Whether you're performing routine environmental analysis or teaching analytical courses, Agilent's 5975E GC/MSD system increases your uptime so you spend more time running your analysis and less time maintaining the system. The bundled system includes a 7820A GC with a split/splitless injection port and a pre-conditioned low-bleed column, 5975 Series MSD, and MSD ChemStation software preconfigured on the PC. An optional automatic liquid sampler increases your productivity.

Agilent 5975T LTM GC/MSD System

Laboratory performance in an out-of-lab GC/MS



The Agilent 5975T LTM GC/MSD is the first commercial transportable GC/MSD system that delivers the same high performance, reliability and quality results as our bench top 5975C series GC/MSD in a size is more than one-third smaller and consumes about half the power. Agilent's proprietary LTM technology is used for faster GC analysis by providing dramatically faster temperature ramp rates. DRS and RTL databases are leveraged for faster screening and analysis of compounds in the field. The 5975T system allows you to go into the field with confidence for the best performance and speed, help you get the credible results you need to make quick, sound decisions affecting life, health, and safety



Agilent GC Analyzers

Proven, reliable solutions based on extensive industry expertise

From crude oil, natural gas, and refining – to specialty chemicals or alternative fuels – Agilent offers the most complete analytical solutions portfolio for the hydrocarbon processing industry. Whether you need simple instrument modifications such as substitution of specially deactivated tubing, or standard analyzers based on common industry standards, or customized solutions based on your unique requirements – Agilent GC Analyzers are designed to meet specific applications.

All analyzers are factory pre-configured and tested, including installation and performance verification – plus after-sales support by Agilent's worldwide customer support organization or by our Channel Partners. You will spend less time setting up your analysis methods and more time producing outstanding results, right from day one.

- More than 115 factory-tested SP1 Analyzers, pretested to run analyses in line with industry standards such as ASTM, UOP, EN and GPA
- Fully guaranteed SP2 solutions – sold and supported by Agilent – offer flexible customization, third party detectors, custom hardware and software to fulfill all your analysis needs
- A whole range of expert solutions offered by Agilent Channel Partners – designed, delivered and supported by these partners



Agilent GC/MS and GC/MS/MS Analyzers

Simplify your application startup with ready-to-use workflow solutions

With any new technology, getting started is the biggest challenge. But Agilent Analyzers help you spend less time on set-up and configuration, and more time generating the highest quality results.

Agilent's pre-configured, factory-tested GC/MS and GC/MS/MS Analyzers make it easy to implement the latest technologies with built-in features and pre-packaged components. So you can start producing consistent, high-quality data from day one.

Built-in features make it faster and easier to screen and perform sensitive analysis.

- Retention Time Locking (RTL) for consistent retention times after column maintenance and easy matching with application specific library or database
- Integrated Capillary Flow Technology (CFT) backflush promotes shorter analysis times, lower chemical background, longer column life and less frequent source cleaning
- Deconvolution Reporting Software (DRS) included with the GC/MSD analyzers for fast data review, screening and quantitation
- Sensitive, multiresidue GC/MS/MS analyses in complex matrices with the Triple Quadrupole GC/MS Analyzers. OptimizedMRM database with constants several hundreds to thousands targeted chemicals set up according to application
- Multimode Inlet (MMI) lets you choose from several injection options



A Portfolio of Analytical LC Solutions to Match Any Application or Budget

Agilent offers a comprehensive portfolio of solutions for analytical LC that give you uncompromised chromatographic performance while remaining within the confines of your budget. Whatever your application requires – now or in the future – common technology across the portfolio helps you increase laboratory productivity and decrease operational costs. And because it's from Agilent, you get everything you expect from a chromatography leader with over 40 years of innovative contributions to LC and LC/MS technology.



Agilent 1290 Infinity LC System – Infinitely more powerful

The Agilent 1290 Infinity LC is the last word in chromatographic performance providing highest speed, resolution and sensitivity. The 1290 Infinity LC gives you ultimate method flexibility from HPLC through UHPLC – run your existing methods and solve all your LC and LC/MS challenges on one system.



Agilent 1260 Infinity LC System – Infinitely more confident

The Agilent 1260 Infinity LC raises the standard in HPLC – without raising the price. It offers new levels of productivity, data quality and robustness to give you highest confidence in your investment. With 600 bar standard pump pressure, 80 Hz standard detector speed and up to 10 times higher UV detection sensitivity, the 1260 Infinity LC prepares you for today's and tomorrow's challenges.



Agilent 1220 Infinity LC System – Infinitely more affordable

The Agilent 1220 Infinity LC is a high quality, integrated system for routine HPLC and advanced UHPLC analysis, for maximum return on investment. Take advantage of the 600 bar power range up to 5 mL/min and 80 Hz detector speed and prepare your lab to take advantage of latest advances in LC column technology.

Low-flow LC Solutions with Unmatched Performance and Stability

Low-flow LC separation with high sensitivity detection and low sample consumption is a well-established and proven technology. The low-flow technique is used frequently for applications where limited amounts of sample are available, for analysis of trace level components in complex mixtures, or when an optimized LC/MS combination is required. The Agilent 1260 Infinity Low-flow LC systems offer unsurpassed low-flow performance and stability.



Agilent 1260 Infinity Capillary LC System

Using a unique technology, the Agilent 1260 Infinity Capillary LC system is optimized for capillary LC. A wide range of flow rates expands laboratory flexibility, offering unparalleled sensitivity and reproducibility. The system is ideally suited for both UV and MS applications.



Agilent 1260 Infinity Nanoflow LC System for MS

Nanoflow LC is widely used for high resolution separations and high sensitivity MS detection. The Agilent 1260 Infinity Nanoflow LC system incorporates Agilent's unique Electronic Flow Control (EFC) with active feedback and real time flow adjustment for constant flow delivery to the column independent of system backpressure. After its first introduction with Agilent capillary and nanoflow pumps, EFC with real time flow control is the gold standard for reliable and robust nanoflow performance.

Agilent 1260 Infinity HPLC-Chip/MS System

The Agilent 1260 Infinity HPLC-Chip/MS system is a microfluidic chip-based technology for nanospray LC/MS. Combined with the high performance Agilent 6000 MS systems, the HPLC-Chip II for LC/MS offers even more overall robustness, reliability and ease-of-use. Applications include proteomics and small molecule analysis. A custom chip program delivers customized success.



Solutions for Purification and Preparative LC

From Flash to full LC production, Agilent has a system to meet your needs. Two scale-up formats cover the full spectrum of sample types. High performance systems separate complex samples using small particle sorbents (5-10 μm) to deliver milligram to gram quantities of pure product. High-throughput systems use larger particle sorbents (10-25 μm) with column overload strategies to deliver grams to multi-kilograms of pure product in a more economical platform.



Agilent 971-FP Flash Purification System

The Agilent 971-FP Flash Purification System is a high throughput and high recovery system for sample purification in drug discovery. Designed with chemists in mind, it achieves maximum recovery and the highest purity in the shortest possible time. For intermediate compound purification, the easy-to-use and open-access 971-FP enables a large team to work independently, improving productivity in the purification and recovery of drug candidate compounds.



Agilent 1260 Infinity Purification Systems

High recovery and purity are key issues for the isolation and purification of valuable pharmaceutical and biological compounds. Agilent offers preparative LC solutions for purification of nanogram to gram quantities of samples. Based on Agilent's industry-leading liquid chromatography portfolio, these systems can be tailored to your sample and detection requirements and are supported by a multitude of application examples. Fraction collection can be triggered by UV, mass or other detection signal, or even by a combination of these.

Agilent Prep to Process HPLC Systems

Agilent scalable prep to process systems offer the broadest range of capacities available from any one supplier. At every scale, they are designed with a process mindset – that not only must a product be produced at high resolution, but, ultimately, with throughput, speed and economics in mind. Our unique approach to system specification begins with understanding the application, the best determinant of media and column, which then drives the choice of remaining system components.



Workflow and Application-based Solutions for LC & LC/MS

The flexibility of the 1200 Infinity Series allows Agilent to offer the broadest of portfolio of liquid chromatography solutions. Choose from high performance systems for analytical LC or configure your system to meet specific application requirements. From nanoflow to high-throughput LC/MS and from amino-acid to GPC analysis, the 1200 Infinity Series gives you infinite possibilities to solve your separation challenges.



Agilent 1260 Infinity Bio-inert Quaternary LC

Infinitely better for bio-molecule analysis

The Agilent 1260 Infinity Bio-inert Quaternary LC system is a dedicated solution for large bio-molecule analysis. The design of new metal-free components in the sample flow-path and the absence of iron and steel in solvent delivery ensures the integrity of the bio-molecule, minimizes unwanted surface interactions and increases column life-time. This is ideal when working under harsh solvent or pH conditions. The power ranges from lowest pressure for traditional bio-purification columns up to high pressure STM analytical bio-columns. Together with the new Bio-HPLC column portfolio for SEC and IEX and 10 x higher sensitivity, highest resolution per time is achieved for protein and NBE characterization.



Agilent 1260 Infinity Analytical SFC System

Easy-to-use SFC system for chiral and a-chiral separations

Supercritical fluid chromatography (SFC) is a seamless extension of conventional HPLC, offering an alternative and attractive separation technology for superior resolution of chiral compounds and trace analytes in pharmaceutical samples. SFC has many advantages over conventional HPLC such as significantly reduced consumption of organic solvent and ultrafast separation at moderate operating pressures using conventional particle size columns. The 1260 Infinity Analytical SFC System provides you with a breakthrough, tenfold increase in sensitivity compared to existing SFC solutions.

Agilent GPC/SEC Instrumentation and Systems

Superior research, quality control and process monitoring tools

Gel Permeation Chromatography (GPC) / Size Exclusion Chromatography (SEC) is the technique of choice for rapid and reliable characterization of polymer molecular weight and molecular weight distribution. Modular and integrated GPC/SEC instrumentation is available to cover the range of applications from simple room temperature analysis to high temperature analysis of engineering polymers, all with simple intuitive control and in-built safety features. Agilent manufactures a range of GPC/SEC instruments and systems, delivering greater accuracy, reproducibility, and reliability with automated high sample throughput.



Agilent 7696A Sample Prep WorkBench

Automating sample prep of analytical samples and standards

For details, see page 7

Agilent 6000 Series LC/MS Solutions

A comprehensive portfolio of LC/MS instrumentation with exceptional MS performance, spectral quality, and productive data analysis tools to address a full range of qualitative and quantitative applications and match your budget.

Agilent 6100 Series Single Quadrupole LC/MS Systems

Unprecedented performance and reliability, day-after-day



The Agilent 6100 Series Single Quadrupole systems deliver superior MS data quality in an easy-to-use, space-saving package. With configurations to fit all budgets, the industry's most popular single-quad LC/MS complements your existing LC detectors and integrates seamlessly with Agilent's ChemStation LC control. The 6100 Series Single Quadrupole LC/MS provides complementary information to ultraviolet diode array detection (UV-DAD).

Agilent 6120 – Budget friendly and very easy to use – with Agilent's 1220 Infinity LC system, a perfect workhorse addition for labs just getting into LC/MS.

Agilent 6130 – Flexible, high performance solution ideal for any quantitation application with 3,000 amu mass range and 1 pg sensitivity – now compatible with Agilent Jet Stream Technology.

Agilent 6150 – Unsurpassed data quality for UHPLC and high-throughput screening and qualitative applications, with faster scan speed (10K amu/sec) and the power of Agilent Jet Stream Technology.



Agilent 6200 Series Accurate-Mass TOF LC/MS Systems

Unmatched confidence of Ultra High Definition Time-of-Flight (TOF) technology

The Agilent 6200 Series TOF systems deliver unmatched speed, mass accuracy and resolution performance in a compact benchtop design. Superior data quality offers certainty for screening, identification and quantitative studies.

Agilent 6224 – Affordable and easy-to-use instrument with <2 ppm mass accuracy and 20,000 resolution for routine analysis of a wide variety of molecules such as pesticides, pharmaceuticals, peptides and intact proteins.

Agilent 6230 with Agilent Jet Stream Technology – Offers 5-10x more sensitivity for confident screening of compounds at low concentration.

Agilent 6400 Series Triple Quadrupole LC/MS Systems

Clearly better sensitivity gives better results

The Agilent 6400 Series Triple Quadrupole systems offer unmatched sensitivity and reliability for trace analysis in food safety, environmental samples, biomarker validation, and ADME/DMPK studies for drug candidates. Powered by Agilent MassHunter software, with Optimizer to automatically fine tune parameters for ion transitions, the 6400 Series Triple Quadrupole systems offer simplified method development to achieve outstanding results.



Agilent 6420 – Economical, easy to use, with Agilent 1260 Infinity LC system, a perfect workhorse instrument for labs with basic needs for quantitative capabilities.

Agilent 6430 – Offers added sensitivity to achieve outstanding performance for most assays.

Agilent 6460 with Agilent Jet Stream Technology – Provides dramatically improved sensitivity for your most demanding quantitative applications.

Agilent 6490 – Incorporates the revolutionary iFunnel Technology to give ultimate sensitivity for the most challenging quantitative analyses in pharmaceutical, clinical, food safety, and environmental applications.

Agilent 6500 Series Accurate-Mass Q-TOF LC/MS Systems

Ultra high definition MS/MS, uncompromised performance

The Agilent 6500 Series Q-TOF systems deliver an unmatched combination of mass accuracy, mass resolution, sensitivity, dynamic range and speed. With best-in-class MS and MS/MS mass accuracy, they provide the capabilities you need to profile, identify, characterize, and even quantify samples as diverse as drug impurities, endogenous metabolites, and protein biomarkers.



Agilent 6520 – Easy-to-use instrument for routine analysis of a wide range of compounds day in and day out.

Agilent 6530 with Agilent Jet Stream Technology – Provides 5-10x more sensitivity for screening of low level compounds.

Agilent 6538 – Provides enhanced resolution in a bench top instrument for confident characterization of complex samples.

Agilent 6540 with Agilent Jet Stream Technology – Combines the highest levels of sensitivity with enhanced resolution to address the most challenging applications.

RapidFire High-throughput Mass Spectrometry Systems

RapidFire is an SPE-based solution that enables detection of native compounds by mass spec. Requiring no labels or surrogates, it enables the screening of intractable or challenging targets which are not amenable to fluorescence or luminescence. Sample throughput is 10x faster than conventional MS screening methods. Featuring fast and easy conversion, you can use Agilent's RapidFire and conventional HPLC on a single mass spectrometer.

Agilent RapidFire 360 MS System

Harness the power of accurate mass spec at RapidFire speeds

With Agilent's RapidFire 360 MS system, your organization's research projects quickly move from sample preparation to data acquisition in one step, without test compound-specific method development. With the use of accurate mass spec analysis, the RapidFire 360 enables you to investigate a broad range of large molecule applications such as whole protein and fragment-based screening. And a standard in vitro ADME workflow is now complete in minutes versus days with traditional MS technologies.



Agilent RapidFire 300 MS System

Helping investigators achieve greater efficiency and faster answers

The Agilent RapidFire 300 High-throughput Mass Spectrometry System features unattended sample processing and flexible plate mapping. With an automated cartridge changer and integrated optical sensors, the RapidFire 300 MS enables unattended overnight operation and automatically detects fluid flow. It was designed to meet investigators' demand for high quality data with a short turnaround time. It integrates with triple quadrupole mass spectrometers and provides data compatible with existing laboratory information management systems.



Agilent RapidFire 200 MS System

Mass spec data at speeds approaching that of a plate reader

The Agilent RapidFire 200 High-throughput Mass Spectrometry System is the entry level label-free, high throughput screening instrument in the RapidFire instrument portfolio. It provides online sample preparation and accommodates all standard plate types. Featuring fast and easy conversion, RapidFire and conventional HPLC may be used on a single triple quadrupole mass spectrometer.

Agilent Software Solutions

Agilent OpenLAB Software

OpenLAB is a rich, integrated software suite built on a set of customer driven architectural values. OpenLAB delivers superior performance, open systems integration, and investment protection that supports each step in the life cycle of analytical data. OpenLAB delivers an environment without barriers so laboratories can capture, analyze, and share data faster and more efficiently. OpenLAB software:

- Accelerates research and development efforts.
- Optimizes laboratory processes to facilitate problem solving.

OpenLAB CDS

Integrating data acquisition under a single platform, the OpenLAB Chromatography Data System:

- Provides multi-technique, multi-vendor instrument control.
- Supports ChemStation and EZChrom Elite workflows.
- Enables full scalability with central data storage.

OpenLAB ECM

Providing a secure, central repository and rich content services, the OpenLAB Enterprise Content Management System:

- Enables you to automate and optimize business processes.
- Enables searching, managing, archiving, and reporting of your business critical information.
- Manages raw data and human-readable documents of nearly all file types.

OpenLAB ELN

Providing scientists with a way to capture and manage the details from each days' experiments, OpenLAB Electronic Lab Notebook:

- Improves collaboration throughout the lab or across a global enterprise.
- Supports workflows across multiple disciplines.
- Streamlines data capture and retrieval and secures intellectual property.



Agilent Dissolution Systems

Agilent 708-DS Dissolution Apparatus

Designed for USP Apparatus 1, 2, 5 and 6 testing of variety of pharmaceutical dosage forms, the 708-DS eliminates or minimizes the chance of errors due to external variables. This highly customizable instrument gives you the flexibility to configure your apparatus in accordance with your established methodologies and standard operating procedures.

- Angled, circulating water bath maintains constant temperature and simplifies draining and cleaning.
- Options for both AutoTemp and Auto Sampling to match your needs.
- Completely integrated software solution, scalable from a single user to an entire enterprise.
- Easy-to-use touch screen display supports multiple languages for simple navigation.

Seamless Integration of Dissolution and UV-Vis Analysis

As a leader in dissolution and spectroscopy, and through collaboration with our customers, Agilent developed both a Multicell and a Fiber-Optic UV Dissolution System that save you time and increase your laboratory's productivity and throughput. We combine Agilent's industry-leading dissolution instruments with either the Agilent 8453 UV-Vis spectrophotometer or the Agilent Cary 60 UV-Vis spectrophotometer to create a flexible solution that supports a wide range of methods and products. Both the multicell and fiber-optic options are designed for R&D and QC laboratories.



Agilent Molecular Spectroscopy Solutions

Agilent Technologies is your premier resource and partner for molecular spectroscopy. Agilent offers you a comprehensive range of molecular spectroscopy solutions.

Agilent 8453A UV-Vis Spectrophotometer (190-1100 nm)

The Agilent 8453 UV-Vis Spectrophotometer features a powerful diode-array for fast scanning, excellent sensitivity, virtually absolute wavelength reproducibility, exceptional reliability, minimum maintenance and excellent optical performance. Direct access to an open cell holder and front panel buttons for triggering makes the instrument easy to use.



Agilent Cary 60 UV-Vis Spectrophotometer (190-1100 nm)

The Agilent Cary 60 UV-Vis spectrophotometer is efficient, accurate and flexible, and is designed to meet your immediate and future challenges. With remote sampling options, proven performance and low cost of ownership, you can be sure that the Agilent Cary 60 UV-Vis will give you answers you can trust.



Agilent Cary 100 UV-Vis Spectrophotometer (190-900 nm)

The Agilent Cary 100 double beam UV-Vis, with a working range past 4.0 Abs, is ideal for routine and research laboratory work. With variable slit widths, it provides optimum control over data resolution.

Agilent Cary 300 UV-Vis Spectrophotometer (190-900 nm)

The Agilent Cary 300 double beam UV-Vis, with a working range past 6.0 Abs and resolution better than 0.24 nm, is a research grade instrument with a pre-monochromator, making it ideal for the analysis of highly turbid biological samples or highly absorbing solid materials.





Agilent Cary 4000 Spectrophotometer (175-900 nm)

The Agilent Cary 4000 sets the standard for photometric noise, range and linearity, providing excellent resolution across the UV-Visible spectrum. The Cary 4000 is ideal for challenging research applications in materials science, and is the industry leading solution for all biological research.

Cary 5000 UV-Vis NIR Spectrophotometer (175-3300 nm)

The Cary 5000 combines PbSmart technology with the unparalleled optical design and performance of all Cary UV-Vis-NIR instruments. It requires only one detector to extend that performance into the NIR.

Cary 6000i UV-Vis NIR Spectrophotometer (175-1800 nm)

The Cary 6000i with a high-performance InGaAs detector is optimized for the shortwave NIR, delivering superior resolution in the 1200-1800 nm region. No instrument can match the NIR performance of the Cary 6000i.

Agilent Cary Eclipse Fluorescence Spectrophotometer

Unique Xenon flash lamp technology delivers superior sensitivity with fiber optics

Agilent's Cary Eclipse fluorescence spectrophotometer offers the high performance you've come to expect from a Cary. With Xenon flash lamp technology, plug-and-identify electronics, and feature-packed, intuitive software, the instrument embodies the Cary name.

The instruments have found a home in many of the routine laboratories around the world where their reliability and ease-of-use are vital.



Agilent 600 Series FTIR Spectrometers

The world's most sensitive FTIR with highest spectra resolution

The Agilent Cary 600 Series FTIR provides unrivalled analytical performance under real-world conditions. The Cary 660 FTIR is a high-performance spectrometer suitable for routine and research analysis. The Cary 670 and Cary 680 FTIR are designed to provide the highest performance for researchers in fields such as polymers/materials, pharmaceuticals, biotechnology and chemicals.



Agilent 610/620 Series FTIR Microscopes

The industry's fastest FTIR imaging with largest field of view

The Agilent Cary 610/620 FTIR microscopes are the highest performing, most versatile FTIR microscopes and spectrochemical imaging systems available. The systems are used in conjunction with the Agilent Cary 600 Series FTIR – the world's best FTIR. The Cary 610/620 are suitable for researchers in fields such as polymers/materials, pharmaceuticals, biotechnology, chemicals and forensics.



FTIR Analyzers

Easy to use and rugged

The Agilent 4000 and 5000 Series FTIRs are in-lab and portable analyzers that support efforts associated with at site analysis of incoming materials and outgoing finished products in the chemical, petrochemical, material, food and polymer industries. Exceptionally compact, easy to use and rugged, they are a perfect match for applications that require high quality answers quickly.



Agilent 2100 Bioanalyzer

One platform – endless possibilities for DNA, RNA, protein and cell analysis

The Agilent 2100 Bioanalyzer is a microfluidics-based instrument performing miniaturized gel electrophoresis of DNA, RNA, protein samples. In addition, it can also perform simple flow cytometry analysis. The Bioanalyzer system comprises benchtop instrumentation, integrated software for operation and data analysis and a broad range of pre-validated analysis kits of microfluidic chips and corresponding reagents.



Bioanalyzer Application Areas

RNA quality check with RIN

The industry standard for RNA analysis offering total RNA, mRNA and small RNA's data including the patented RIN algorithm for total RNA quality assessment (RNA Integrity Number).



DNA size and quantity

The industry standard for highly sensitive DNA sample QC in next generation sequencing experiments and high resolution DNA fragment analysis.



Protein analysis

The fast and reliable way to determine the quantity and purity of proteins from Coomassie down to silver stain sensitivity.



On-chip flow cytometry

The easy way to acquire dual-color, cell-based fluorescence data.



Agilent 7100 Capillary Electrophoresis System

Maximum sensitivity. Maximum productivity.

The Agilent 7100 Capillary Electrophoresis System brings unprecedented HPLC-like sensitivity to a wide range of analytical challenges. The system delivers best-in-class analytical performance, the industry's broadest selection of detectors and plug-and-play compatibility with all of Agilent's 6000 Series mass spectrometers. Legendary Agilent reliability, familiar ChemStation software and the confidence of a single-vendor solution all add to the value equation – making the Agilent 7100 CE the clear choice for your lab's next (or first) CE or CE/MS system.

Detector options

- Best in class UV-DAD for detection of impurities as little as 0.05% of a main peak
- Direct connection to external detectors, for example, MS, LIF, CC

Easier handling, reliability and service

- 30% lighter with a 25% smaller footprint
- Modular architecture enables easy servicing & maintenance
- Ideally suited for ready to use reagent kits (Agilent or others)

Improved robustness, reduced cost-of-ownership

- Double lifetime of UV lamps, rugged pressure-vacuum system
- Low volume replenishment for unattended operation
- Includes A/D-converter to handle external detector signals
- Self test of instrument with Agilent LabAdvisor software



Agilent 3100 OFFGEL Fractionator

pI-based fractionation of proteins and peptides with liquid-phase recovery

Research shows that prefractionation of proteins and peptides prior to LC/MS analysis can dramatically increase the number of proteins ultimately identified. The Agilent 3100 OFFGEL Fractionator uses a novel isoelectric focusing technique to achieve excellent pI-based fractionation. The resulting fractions are in solution, making recovery for LC/MS analysis much easier than with old-fashioned gels. Results are highly reproducible, and the 3100 OFFGEL fractionator is a model of simplicity and ease of use.

Up- or downstream sample processing steps such as immunodepletion, protein digestion and liquid chromatography can be easily interfaced with this technique for multi-dimensional separations of complex samples.

- Simple, reproducible, and easy to use
- OFFGEL fractionation with 0.1-0.6 pH resolution
- In-solution fraction recovery for up to 16 samples
- μg to mg loading capacity



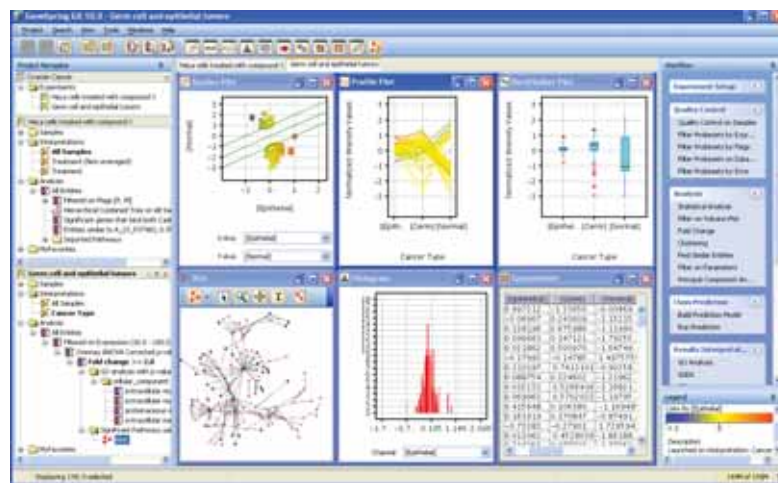
Agilent DNA Microarray Scanner with SureScan High Resolution Technology

Agilent's DNA Microarray Scanner with SureScan High-Resolution technology is the key component of microarray-based applications in which increased coverage of the genome is a necessity. Whether performing gene expression studies, aCGH, miRNA profiling, or other novel applications, Agilent's scanning technology is responsible for providing the highest quality data. Agilent's DNA Microarray Scanner provides a complete workflow solution by the integration of hardware, sample processing kits, microarrays and data analysis software.



Agilent GeneSpring

Agilent GeneSpring provides powerful, accessible statistical tools for fast visualization and analysis of gene expression data. Regarded as the gold standard in desktop expression analysis, GeneSpring allows you to quickly and reliably identify targets of interest that are both statistically and biologically meaningful.



Agilent SureCycler 8800

Surely Better PCR Solutions

The Agilent SureCycler 8800 provides you with a complete package of market leading features and functionality. Designed for ease-of-use, the Surecycler 8800 features a PCR protocol wizard, pre-loaded programs, and convenient networking capabilities. The intuitive software was specifically built for touch screen with quick programming paths and big graphical buttons.

Agilent's extensive experience with engineering enzymes delivers unique and versatile reagents that offer robustness, high yield, and reproducibility without sacrificing performance features such as specificity, sensitivity, and length.

Agilent's PCR portfolio solution doesn't just include our products, we also offer full support to assist you in reaching your goals. Contact our experienced technical support team for help in designing your assays, optimizing your protocols, and troubleshooting your programs. The Agilent SureCycler 8800, combined with our extensive PCR reagent portfolio and our superior customer service, provides you with Surely Better PCR results.



X-ray Crystallography

Reliable and flexible X-ray diffraction

Can't wait to see the molecular structure of your sample? Agilent provides researchers with a versatile portfolio of modular single- and dual-source systems which can be optimized for small molecule and protein X-ray crystallography. Our user-friendly systems allow non-experts as well as specialist crystallographers to obtain extremely high quality results with scope for intelligent automation or full manual control of experiments.

Our diffractometers use sealed tube molybdenum and copper wavelength X-ray sources which contain no moving parts. They are highly reliable and avoid the expense and inconvenience of regular servicing and maintenance.

With a low cost of ownership and excellent uptime, our systems are ideal for both in-house laboratories and centralized service laboratories.



Versatile X-ray diffraction systems

- Xcalibur E – Small molecule crystallography made simple
- Gemini – The world's first dual wavelength diffractometer
- Gemini Ultra – The world's most popular dual wavelength system
- SuperNova – The fastest, most intense dual wavelength X-ray diffractometer for small molecule or protein applications
- PX Scanner – Unique instrument for the x-ray screening of protein crystals, in situ and undisturbed in the multi-well crystallization plate

Software

- CrysAlis^{Pro} – Intelligent data collection and reduction software
- AutoChem – Real-time structure solution and refinement plug-in for CrysAlis^{Pro}
- CrystalEyes – PX Scanner crystal screening software

Cryogenic and heating devices

- Helijet – Openflow liquid helium cooling device (15-90K)
- CryoJet XL – Liquid nitrogen cooling (90-300K)
- CryoJet HT – Liquid nitrogen cooling and heating (90-490K)



Magnetic Resonance Products

Agilent is a leading supplier of research magnetic resonance imaging (MRI) and nuclear magnetic resonance (NMR) systems, having installed thousands of systems worldwide. We offer customers a broad portfolio of products designed with flexibility and expandability in mind; many standard and custom configurations are available for a variety of chemical, biomedical and material sciences applications.

Agilent NMR Systems

Flexible architecture, multiple options and advanced features for routine to advanced analyses

Agilent's NMR systems feature a full range of products designed to work in an integrated fashion. The principal components include magnets, control systems, probes, automation systems, software and automation accessories. Agilent's PremiumCOMPACT magnet family provides the smallest footprint and best field uniformity in the industry. Control consoles are based on Agilent's proprietary DirectDrive architecture, providing unsurpassed performance and flexibility to implement a multitude of different experiments depending on the sample and type of analysis required. Agilent probes are available to support most all sample types and applications. The highly acclaimed VnmrJ software makes data acquisition and processing simple. The Agilent NMR system is the optimal tool for applications in research, product/process development or routine analysis. Agilent offers NMR instrumentation in field strengths ranging from 400 to 900 MHz with bore sizes from 54 to 89 mm.



Agilent MRI System

Superior architecture. Superior data.

Using the same base technology as our NMR spectrometers, Agilent offers the most advanced magnetic resonance scanners for research applications. Engineered with our innovative DirectDrive technology and delivering unsurpassed performance, the Agilent MRI system is the most advanced magnetic resonance scanner ever developed. Unique parallel controllers, one for each RF transmitter and receiver channel, and VnmrJ software, provide flexible, easy-to-use pulse programming power to make the Agilent MRI system the optimal instrument for state-of-the-art MRI experiments and methods development. Our MRI instruments range in field strength from 3 to 16.4 Tesla with bore sizes from 160 to 920 mm.



Automation Solutions for Life Science Applications

From stand-alone units to fully integrated systems, Agilent offers key sample preparation and creative walk-away automation approaches with personalized customer service to provide complete solutions for your laboratory. Combining innovative engineering with high standards of quality, Agilent designs and manufactures high-performance equipment for processes that are revolutionizing pharmaceutical, biotech, and genomic research.

Liquid Handling

Agilent Bravo Automated Liquid Handling Platform

The Bravo Automated Liquid Handling Platform is the fastest and most versatile small footprint liquid handling system available, capable of dispensing from 100 nL to 200 μ L in 96, 384, and 1536 well formats or to a column, row or single well of any of these plate types. Its space-saving nine plate-position footprint can fit inside a standard laminar flow hood, enabling automated liquid handling for cell-based assays or hazardous reagent handling.



Agilent AssayMAP Bravo for Protein Purification

The Agilent AssayMAP Bravo combines the precision and the high throughput of the Agilent Bravo Automated Liquid Handling platform with the AssayMAP microchromatography technology from BioSystem Development. The robust system allows a full range of highly parallelized liquid handling operations, including precise flow rate control for true chromatographic separation of the target molecule in low sample volume.

The heart of the AssayMAP technology is the 5 μ L, disposable, microchromatography cartridge packed with media to help you selectively purify, quantitate and react target proteins for direct assay or downstream processing.



Plate Handling

Agilent Vertical Pipetting System

Agilent's Vertical Pipetting System is the fastest precision pipettor on the market. The Vertical Pipetting Station features a choice of interchangeable heads, including a 96-, 384-, 8- or 16-channel. Eight sliding shelves are arranged on either side of the pipetting head permitting access to the plates, while conserving deck space. The pipetting head is fitted with a 2-axis positioning stage providing access to all quadrants of 96, 384, and 1536 well microplates. An intuitive user interface allows the operator to create and run complex pipetting protocols with ease.

Agilent BenchCel Microplate Handling Workstation

The BenchCel Microplate Handler is a combination of automated microplate handling and storage that delivers the speed and precision of a full-sized automation platform. The BenchCel Microplate Handler features a high-speed robot that can access integrated microplate stacks and peripheral instruments. This customizable, modular design provides the flexibility and scalability required to meet the needs of the most diverse laboratory applications.

Agilent PlateLoc Thermal Microplate Sealer

The PlateLoc Thermal Microplate Sealer is the premier thermal sealer through its speed, small footprint, ease of use and dependability. The instrument automatically accommodates deepwell, assay, PCR, and compound storage plates. Standalone mode operation enables full control of sealing time and temperature through the PlateLoc's touch screen.

Agilent Microplate Labeler

The Agilent Microplate Labeler applies barcode labels to any or all four sides of a microplate and provides the flexibility to create custom labels. Specifically designed to accommodate a wide range of microplates, the Microplate Labeler adjusts for different skirt heights and deepwell plates using a two-position plate stage which allows the instrument to automatically place labels at either of two vertical label positions (which can be adjusted by the user). Its compact size fits easily on a bench top, while its speed achieves the most aggressive throughput goals while software reads data from your comma-delimited file or can be integrated with a LIMS.

Agilent Microplate Centrifuge

The Agilent Microplate Centrifuge is the smallest robotic-accessible automated centrifuge on the market. It provides unmatched vibration and noise control in a small, low maintenance package. Ideal for high- or medium-throughput applications, the Microplate Centrifuge features a dual position design to accommodate two standard microplates at a time. The Microplate Centrifuge is capable of rapid acceleration and deceleration (a customizable setting), minimizing the required cycle time. It is excellent for filtration protocols, air bubble removal in high density plates and spin-downs including cells and cellular debris.

Agilent Labware MiniHub

The Labware MiniHub is a rotating random-access labware storage device. Up to four pieces of labware can be placed on each shelf, in either the landscape or portrait orientation. Spacing blocks, also called spacers, can be added or removed to adjust the distance between shelves, accommodating different labware types (microplates, tipboxes, or tube racks).

Robotics

Agilent Benchbot Robot

The Agilent BenchBot Robot is a highly flexible, compact robot for automating microplate handling for a variety of laboratory applications. It can be installed on standard laboratory benches, within enclosed hoods, or on portable docking tables and integrates easily with Agilent instruments and a wide variety of third-party instruments.

Direct Drive Robot

Anyone can quickly teach the Agilent Direct Drive Robot (DDR) with the click of a button. At the center of the BioCel Systems or as the robot for do it yourself systems, the DDR is fast, precise, and designed with safety in mind. State-of-the-art direct drive technology reduces the number of moving parts, resulting in a robotic arm that has increased reliability and speed, moving smoothly with precision and accuracy. Innovative design simplifies the teaching process and enables one person to quickly integrate instruments into the system, minimizing setup personnel and time.



Integrated Systems

Agilent BioCel System

Agilent BioCel systems are available in three basic sizes (900, 1200 and 1600), each of the models can easily be expanded by combining units and/or docking tables. Whether you are automating genomics applications, cell-based screening, or compound management, the Agilent BioCel Systems have the right mix of flexibility, speed, and robustness to maximize your laboratory productivity.





Automation Consumables

Agilent offers a wide selection of liquid handling and microplate handling consumables, such as disposable tips and thermal microplate seal and adhesive labels for barcoding. Agilent consumables provide top instrument performance and reliable test outcomes.

Disposable pipette tips for liquid handling

All Agilent pipette tips are individually lot certified DNase, RNase free. The innovative processing and packaging of our tips helps address common concerns about automated pipette tips such as static buildup and deck space utilization. Additionally, Agilent pipette tips are the only pipette tips that are certified using the ARTEL MVS Multichannel Verification System assuring the user that every tip meets our exacting accuracy and precision requirements.

Heat seals for the PlateLoc Thermal Microplate Sealer

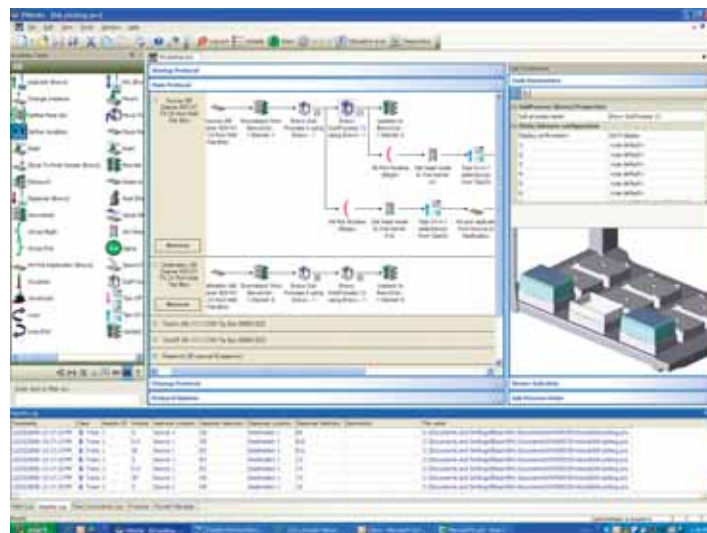
Agilent heat seal features high-tech materials, including aluminum-based or optically clear materials with peelable, pierceable or permanent sealants, intended and validated for life science applications. The portfolio covers most microplate materials – Polypropylene, Polystyrene, COC.

Adhesive labels for Microplate Labelers

Authentic Agilent automation certified labels with application matched ribbon guarantee the highest level of system performance and superior instrument and applications support.

Agilent VWorks Automation Control Software

Each Agilent Automation Solutions instrument is managed by the same software system, dramatically simplifying the user experience. The intuitive design of the software follows your workflow, simplifying conversion of manual experiments to automated experiments. The VWorks Automation Control Software is flexible and expandable, readily accommodating additional modules and third-party devices, and even includes a built-in database for managing labware.





Agilent Service and Support for Instrument Systems

Focus on what you do best

For 40 years, Agilent has been building and maintaining the instruments you count on to stay competitive and successful. Trust us to protect your investment with a broad portfolio of services, backed by a global network of experienced service professionals dedicated to the productivity of your lab.

Agilent Advantage Service Plans

The best service available for your Agilent instruments

Choose the level of coverage that is best for your lab – from priority-one coverage for ultimate uptime and productivity, to basic coverage for reliable instrument repair. Agilent Advantage service plans also include Agilent Remote Advisor for real-time remote monitoring and diagnostics – helping you to maximize instrument uptime and optimize laboratory workflows.

Get the Agilent Service Guarantee

Should your instrument require service while covered by an Agilent service agreement, we guarantee repair or we will replace your instrument for free. No other company offers this level of commitment to keep your lab up and running at peak efficiency.

Agilent Compliance Services

Ranked #1 by customers since 1995

An independent survey has ranked Agilent #1 for Compliance Services five consecutive times since 1995. Agilent Enterprise Edition is used in regulated laboratories, including standard organizations, regulatory agencies, and a global top-3 pharmaceutical firm. Agilent provides fully automated, metrology-based qualification services you can trust.

Agilent Education and Consulting Services

Our best minds, working for you

Make the most of your instrument with training and consulting from the same experts who designed the instruments, software and processes you use every day.

The Agilent Value Promise – 10 Years of Guaranteed Value

In addition to continually evolving products, we offer something else unique to the industry – our 10-year value guarantee. The Agilent Value Promise guarantees you at least 10 years of instrument use from your date of purchase, or we will credit you with the residual value of the system toward an upgraded model. Not only does Agilent ensure a reliable purchase now, but we also ensure that your investment is just as valuable in the future.

Agilent Sample Preparation, Columns and Supplies

Get the best possible performance from your instruments with Agilent sample preparation, columns and supplies

Using Agilent sample preparation products, columns and supplies enhances the sensitivity and performance you get from your instruments. Agilent tightly controls the specifications for every column and supply it sells. In many cases, Agilent adds several manufacturing steps beyond the "standard" processes that others might use, so that the product is optimized to the exacting standards that your work demands. This adds up to less worry, less rework and more productivity for your lab.

Sample Preparation



Only Agilent offers the complete line of sample preparation products for all types of analysis across the full spectrum of GC, GC/MS, LS, LC/MS instrumentation:

- Extraction solutions for the widest range of analytes and matrices
- Largest choice of formats and sorbents in the market today
- Full portfolio of SLE, Precipitation/Filtration, SPE, and DBS products

Learn more at www.agilent.com/chem/sampleprep

Columns and Standards



With decades of experience developing, manufacturing and improving columns, Agilent has a variety of column choices to meet your needs:

- LC columns including ZORBAX, Poroshell, Biocolumns and Flash Purification
- GPC/SEC columns and standards including PLgel, PL aquagel-OH, specialty columns and EasiVial standards
- Agilent J&W GC columns including Ultra Inert, PLOT, Select and LTM columns
- Custom column shop for special requirements

Learn more at www.agilent.com/chem/columns

Supplies



With innovations like MS Analyzed Vial Kits and Ultra Inert inlet liners, Agilent has all of the supplies to keep your instruments operating at peak performance:

- Range of supplies for GC, LC, MS, Atomic and Molecular Spectroscopy
- Manufactured and tested against our demanding specifications
- Growing portfolio of CrossLab supplies for major instrument brands

Learn more at www.agilent.com/chem/supplies

Learn more:

www.agilent.com/chem

Buy online:

www.agilent.com/chem/store

Find an Agilent customer center in your country:

www.agilent.com/chem/contactus

U.S. and Canada

1-800-227-9770, agilent_inquiries@agilent.com

Europe

info_agilent@agilent.com

Asia Pacific

inquiry_lsca@agilent.com

Information, descriptions, and specifications
in this publication are subject to change without notice.

© Agilent Technologies, Inc., 2011
Printed in the USA, July 1, 2011
5990-8053EN

