

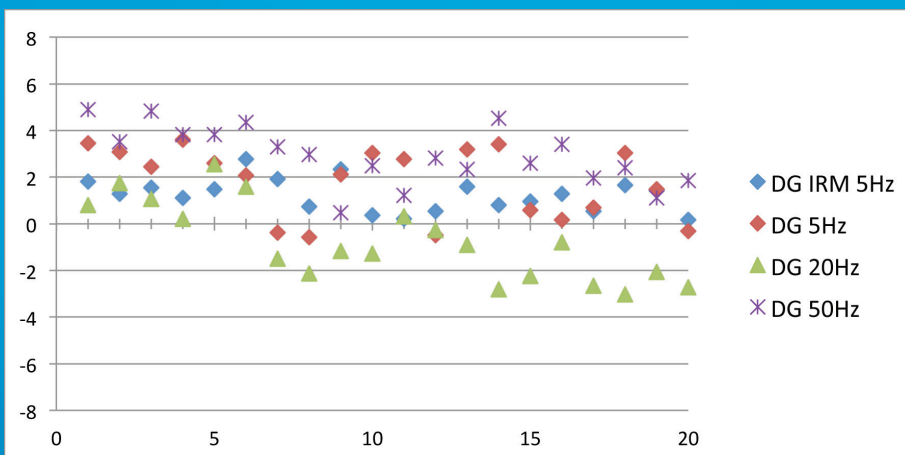
# ULTIMATE PERFORMANCE AGILENT 7200 Q-TOF FOR GC/MS

The Measure of Confidence

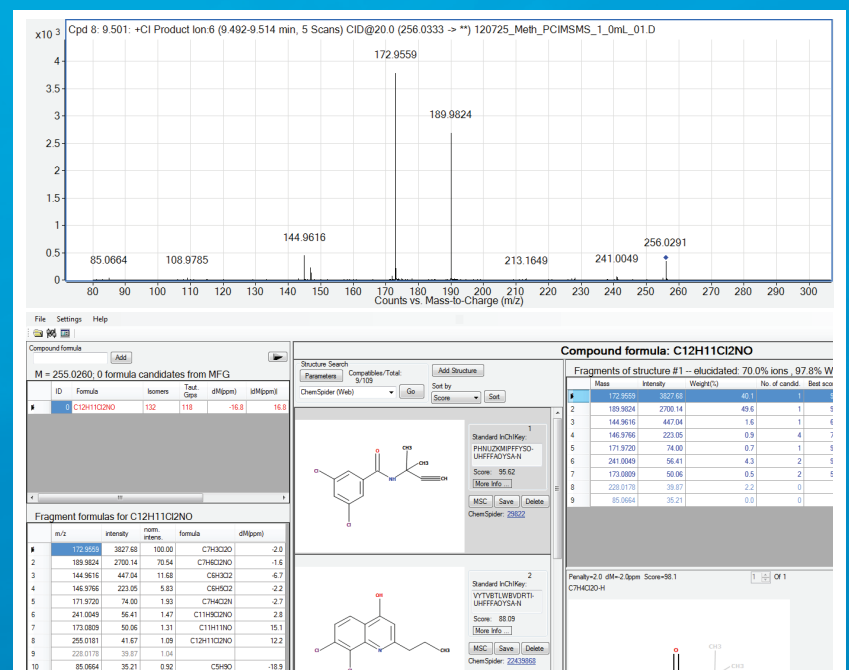


- Metabolomics and Metabonomics
- Food QC and Pesticide Residues
- Natural Products Research
- Doping - Human and Animal
- Environmental Contaminants
- Forensic / Toxicology
- Energy Research and Petrochemicals
- Food Research, Flavors and Fragrances
- Materials Research and Monitoring
- Synthetics Confirmation and QC
- Homeland Security

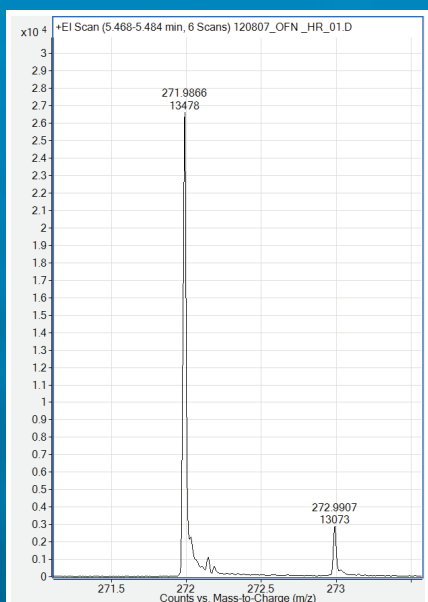
**Stable Mass Accuracy**  
Mass Error < 5ppm  
 $\approx \Delta 0.0009\text{Da}@188.1405$



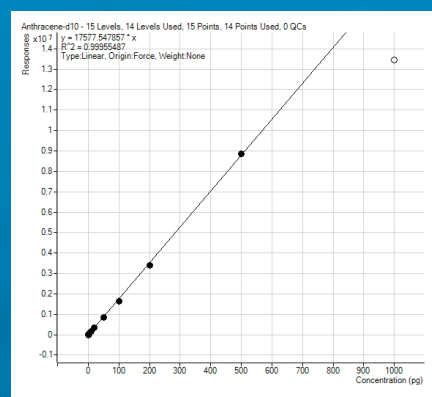
**Qualitative Analysis in MS/MS mode**  
The Molecular Structure Correlator (MSC) tool facilitates structure elucidation from MS/MS spectra.



**High Resolution for Qualitative Analysis**  
> 13,000 @ m/z 271.9867  
(High-Resolution Mode)



**Wide Linear Range Quantitative Analysis**  
> 4 orders  
(Dual Gain Mode)



**Removable Ion Source**  
Easily switch between ion sources without venting

