

+RECIPE

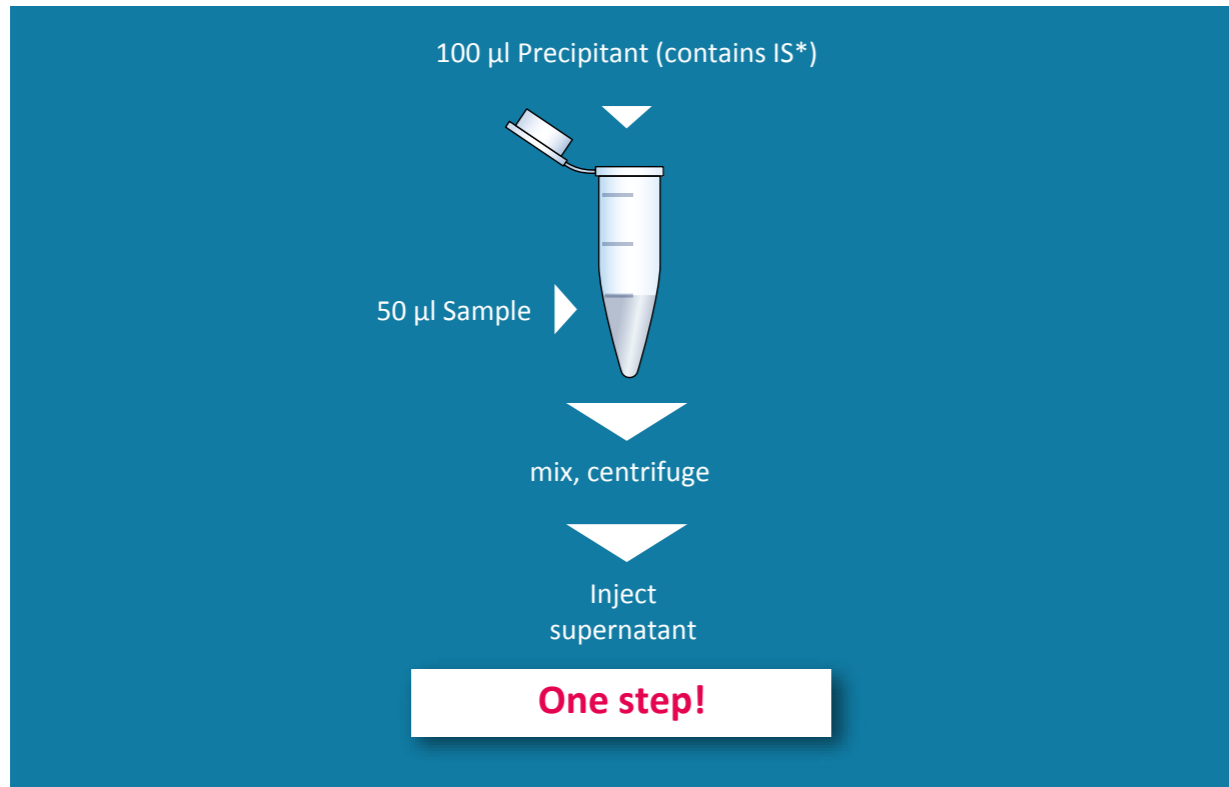
ClinMass[®] TDM 200 Kit System



also available:
TDMⁱ

Therapeutic Drug Monitoring (TDM)
by LC-MS/MS

The RECIPE TDM 200 Kit System



The **ClinMass® TDM Kit System** offers you the possibility to determine more than 155 different analytical parameters with **one** Kit System (sample preparation, mobile phases and analytical column).

155 analytical parameters in 7 Add-on Sets



* Internal Standards available for most analytes.

The RECIPE TDMⁱ Kit Solution



The **TDM 200 Kit System** is also available as **TDMⁱ Kit Solution** with direct injection of matrix.

Direct Injection Technology

Internal Standard is added to native serum or plasma sample, calibrator or control automatically by just one simple pipetting step of the autosampler followed by direct injection of the individual samples into the chromatographic system. Subsequently, the analytes are separated and determined by on-line analysis.

Simplify your lab-routine

- + By direct injection of matrix
- + Retention times < 7 min.
- + Small sample volume needed < 20 µl

ADP	37 Antidepressants	Order no. MS9400
Agomelatine	Fluoxetine	Paroxetine
Atomoxetine	Fluvoxamine	Reboxetine
Bupropion	Guanfacine	Ritalinic Acid
Citalopram	Hydroxybupropion	Sertraline
Clomethiazole	Methylphenidate	threo-Dihydro-Bupropion
Desmethylcitalopram	Mianserine	Tianeptine
Desmethylfluoxetine	Milnacipran	Tramadol
Desmethylmianserine	Mirtazapine	Tranlycypromine
Desmethylmirtazapine	Moclobemide	Trazodone
Desmethylsertraline	Nefazodone	Venlafaxine
Dosulepin	O-Desmethyltramadol	Vortioxetine
Duloxetine	O-Desmethylvenlafaxine	
erythro-Dihydro-Bupropion	Opipramol	

36 Benzodiazepines		Order no. MS9500	BZP
3-Hydroxybromazepam	Demoxepam	Nordiazepam	
7-Aminoclonazepam	Desalkylflurazepam	Oxazepam	
7-Aminoflunitrazepam	Desmethylflunitrazepam	Prazepam	
7-Aminonitrazepam	Diazepam	Temazepam	
α-Hydroxyalprazolam	Estazolam	Tetrazepam	
α-Hydroxymidazolam	Flunitrazepam	Trazodone	
α-Hydroxytriazolam	Flurazepam	Triazolam	
Alprazolam	Lorazepam	Zaleplon	
Bromazepam	Lormetazepam	Zolpidem	
Brotizolam	Medazepam	Zopiclone	
Chlordiazepoxide	Midazolam		
Clobazam	Nitrazepam		
Clonazepam	Norclobazam		

AED	26 Antiepileptic Drugs	Order no. MS9200
10-OH-Carbamazepine	Levetiracetam	Retigabine
Carbamazepine	N-Desmethylnethsuximide	Rufinamide
Carbamazepine-diol	Oxcarbazepine	Stiripentol
Carbamazepine-epoxide	PEMA	Sulthiame
Ethosuximide	Perampanel	Tiagabine
Felbamate	Phenobarbital	Topiramate
Gabapentine	Phenytoin	Valproic Acid
Lacosamide	Pregabalin	Zonisamide
Lamotrigine	Primidone	

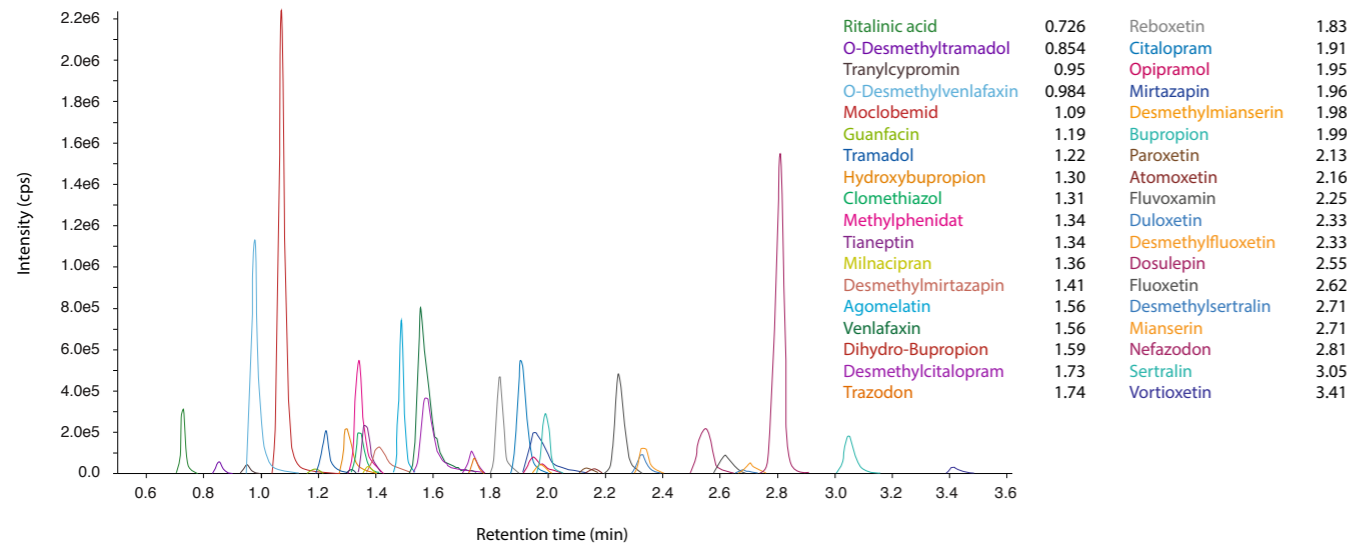
2 Mycophenolic Acid	Order no. MS99100	MPA
Mycophenolic acid	Mycophenolic acid glucuronide	

28 Neuroleptics	Order no. MS9300	NLP
Amisulpride	Melperone	Sertindole
Aripiprazole	Norclozapine	Sulpiride
Chlorpromazine	Norquetiapine	Thioridazine
Chlorprothixene	Olanzapine	Ziprasidone
Clozapine	Paliperidone (9-OH-Risperidone)	Zotepine
Dehydro-Aripiprazole	Perazine	Zuclopenthixol
Desmethylolanzapine	Pipamperone	
Flupentixol	Promethazine	
Fluphenazine	Prothipendyl	
Haloperidol	Quetiapine	
Levomepromazine	Risperidone	

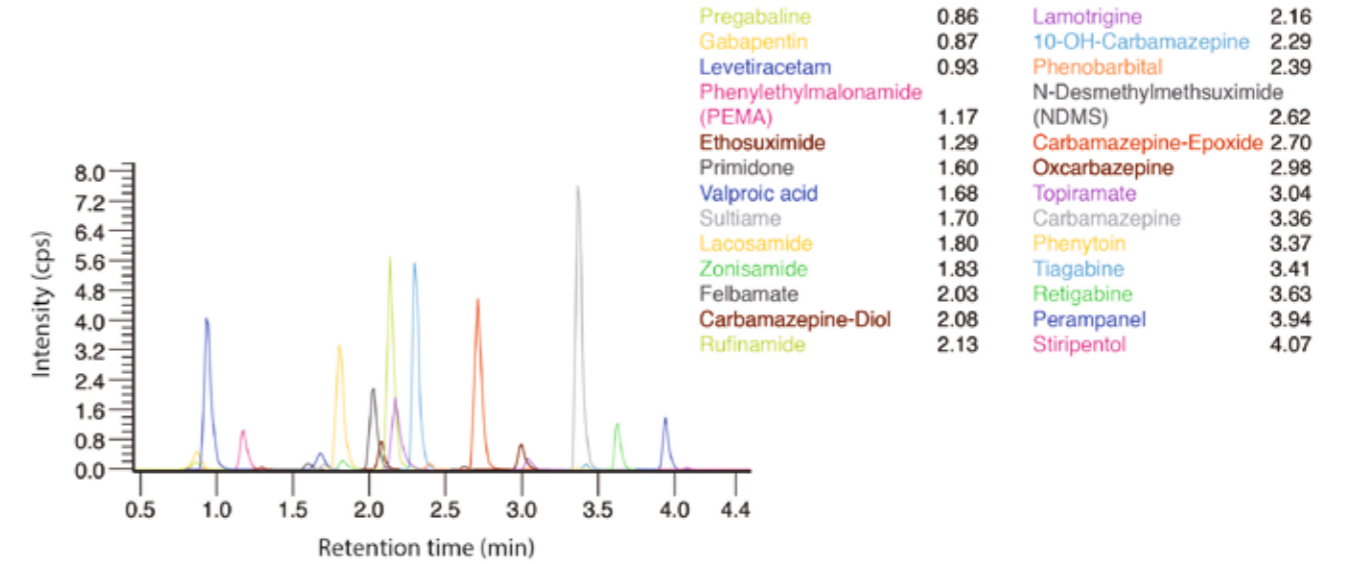
AMC	11 Antimycotics	Order no. MS9600
5-Fluorocytosine	Isavuconazole	OH-Itraconazole
Amphotericin B	Itraconazole	Posaconazole
Anidulafungin	Ketoconazole	Voriconazole
Fluconazole	Micafungin	

15 Tricyclic Antidepressants	Order no. MS9100	TCA
Amitriptyline	Imipramine	Normaprotiline
Clomipramine	Maprotiline	Nortrimipramine
Clozapine	Norclomipramine	Nortriptyline
Desipramine	Norclozapine	Protriptyline
Doxepin	Nordoxepin	Trimipramine

ADP TDM Antidepressants

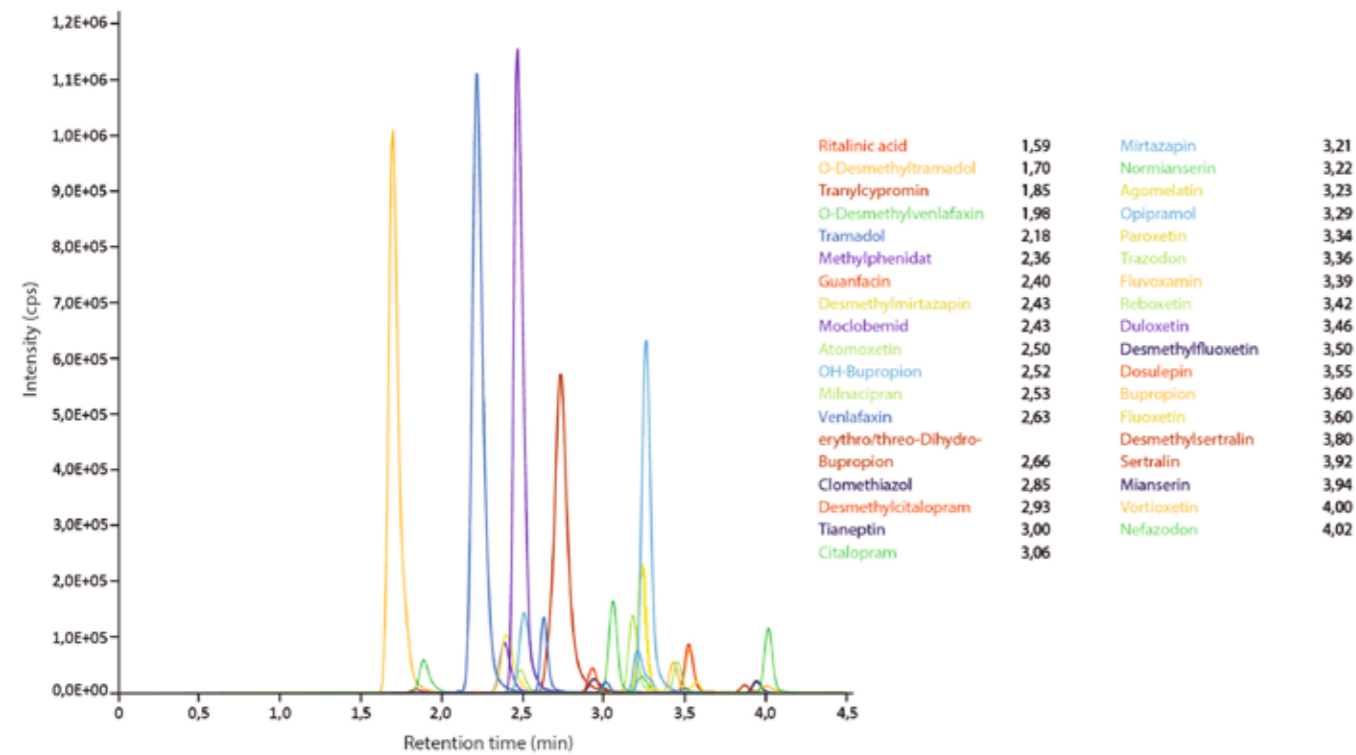


TDM Antiepileptic Drugs AED



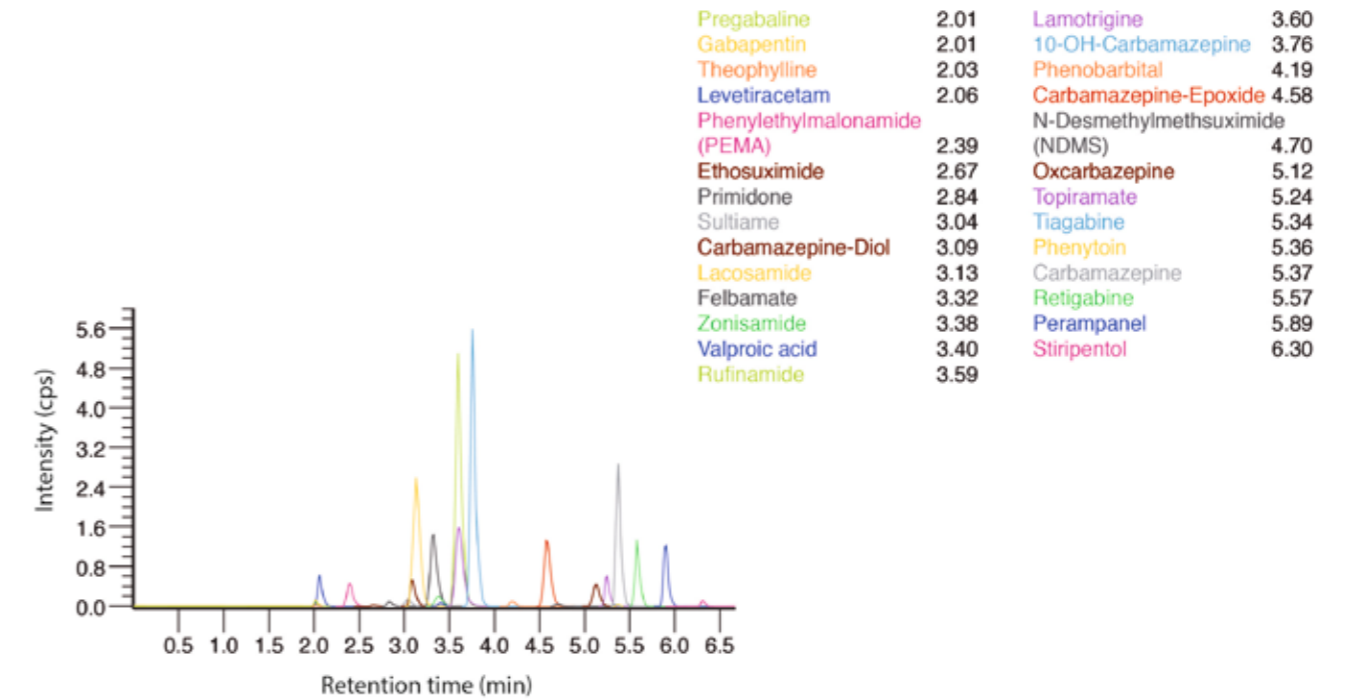
ADP TDM Antidepressants

Direct Injection

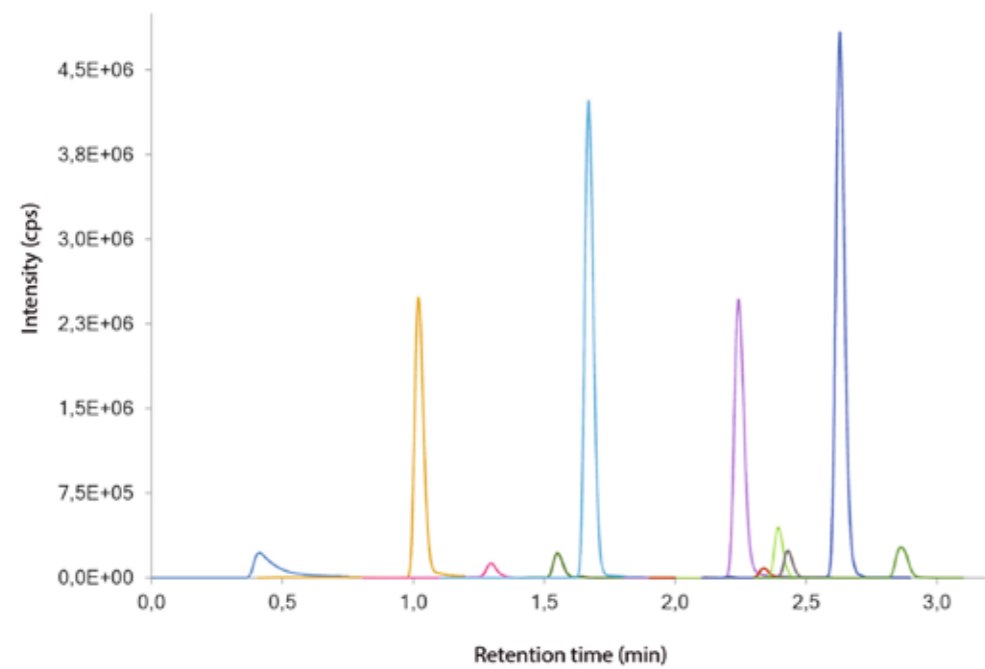


TDM Antiepileptic Drugs AED

Direct Injection

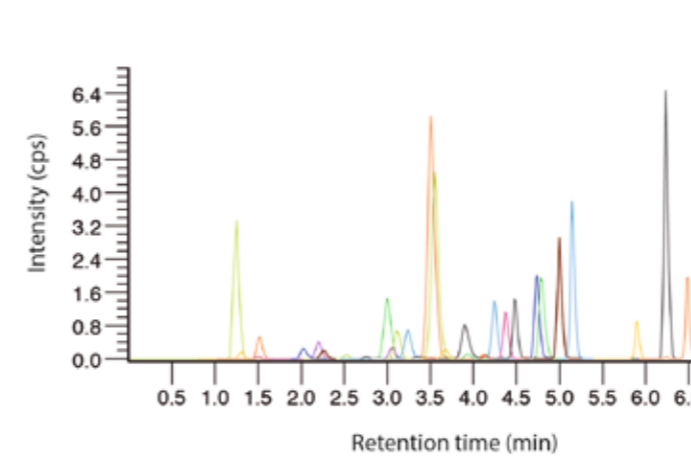


AMC **TDM** **Antimycotics**



5-Fluorocytosine	0.41
Fluconazole	1.02
Amphotericin B	1.30
Micafungin	1.55
Voriconazole	1.67
Ketoconazole	2.24
Anidulafungin	2.34
Posaconazole	2.39
Hydroxy-Itraconazole	2.43
Isavuconazole	2.63
Itraconazole	2.86

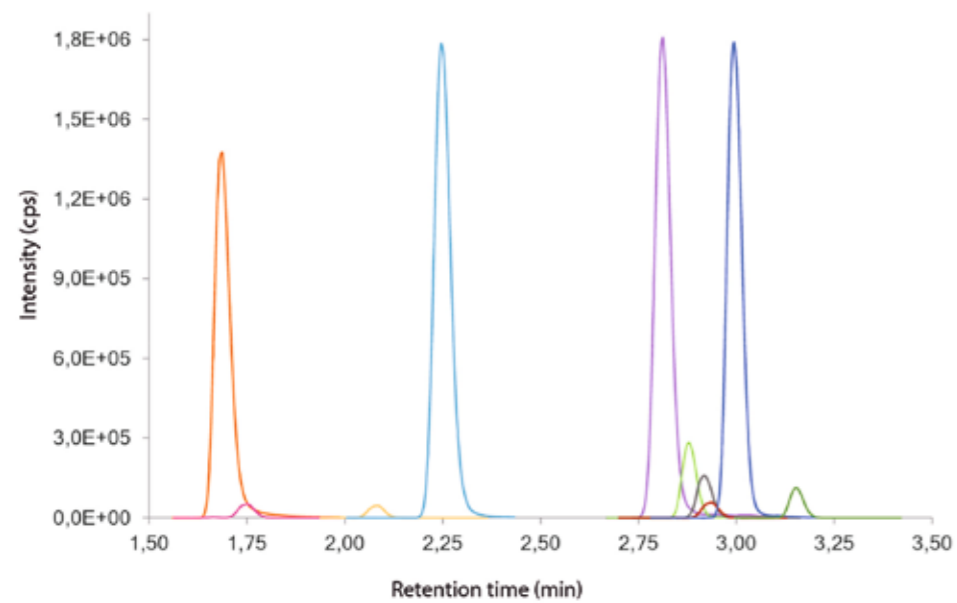
TDM **Benzodiazepines** **BZP**



7-Aminonitrazepam	1.24	Chlordiazepoxide	3.55
7-Aminoclonazepam	1.30	Alprazolam	3.67
3-Hydroxybromazepam	1.50	α-OH-Midazolam	3.90
7-Aminoflunitrazepam	1.51	Triazolam	3.93
Bromazepam	2.02	Desalkylflurazepam	4.12
Demoxepam	2.19	Flunitrazepam	4.13
Zopiclon	2.26	Temazepam	4.24
Zaleplon	2.52	Brotizolam	4.35
α-OH-Triazolam	2.74	Nordiazepam	4.37
α-OH-Alprazolam	2.75	Clobazam	4.48
Desmethylflunitrazepam	2.89	Lormetazepam	4.61
Oxazepam	3.00	Trazodone	4.73
Nitrazepam	3.06	Flurazepam	4.79
Estazolam	3.11	Midazolam	4.99
Norclobazam	3.23	Diazepam	5.14
Lorazepam	3.37	Tetrazeepam	5.90
Clonazepam	3.44	Prazepam	6.23
Zolpidem	3.50	Medazepam	6.48

AMC **TDMⁱ** **Antimycotics**

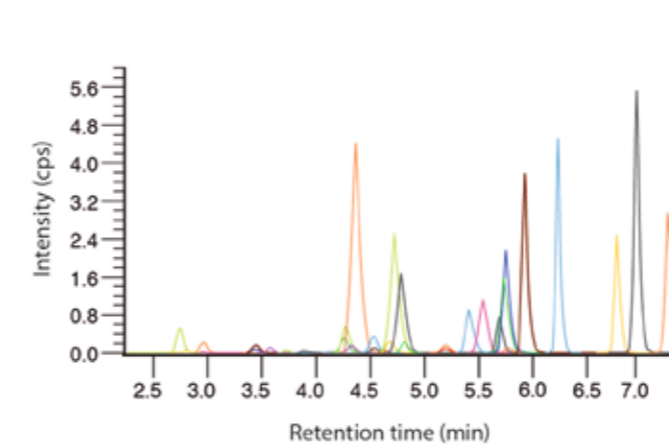
Direct Injection



Fluconazole	1.69
Amphotericin B	1.74
Micafungin	2.09
Voriconazole	2.25
Ketoconazole	2.81
Posaconazole	2.88
Hydroxy-Itraconazole	2.92
Anidulafungin	2.94
Isavuconazole	2.99
Itraconazole	3.15

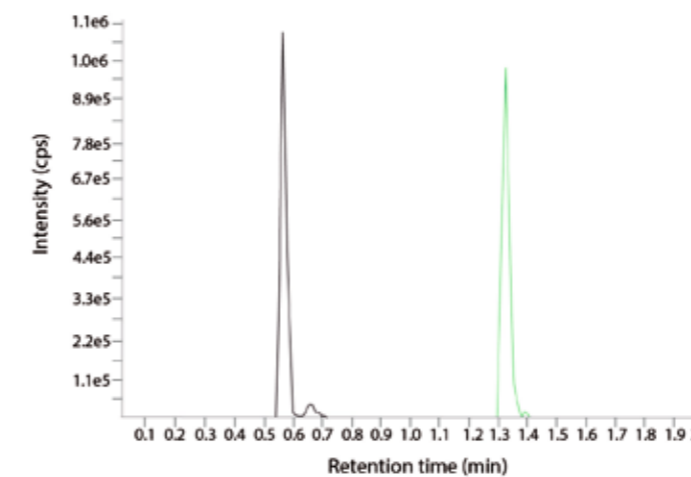
TDMⁱ **Benzodiazepines** **BZP**

Direct Injection

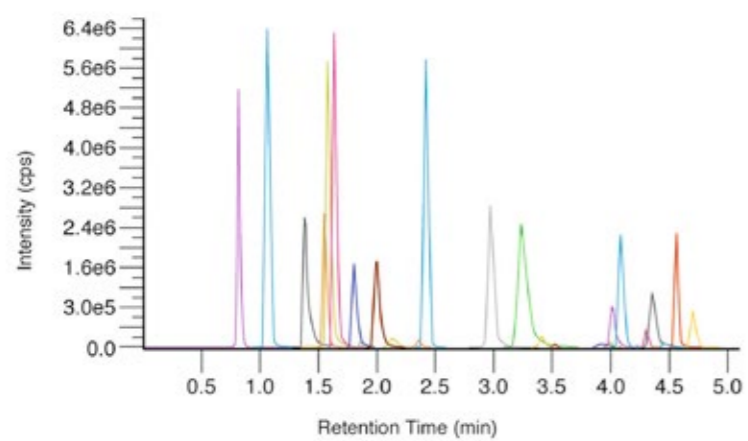


7-Aminonitrazepam	2.74	Alprazolam	4.67
7-Aminoclonazepam	2.80	Chlordiazepoxide	4.72
3-Hydroxybromazepam	2.96	α-OH-Midazolam	4.78
7-Aminoflunitrazepam	2.96	Triazolam	4.81
Bromazepam	3.43	Desalkylflurazepam	5.19
Zopiclon	3.45	Flunitrazepam	5.19
Demoxepam	3.57	Brotizolam	5.21
Zaleplon	3.71	Temazepam	5.40
α-OH-Triazolam	3.86	Nordiazepam	5.54
α-OH-Alprazolam	3.88	Clobazam	5.68
Desmethylflunitrazepam	4.15	Flurazepam	5.73
Oxazepam	4.26	Trazodone	5.74
Estazolam	4.27	Lormetazepam	5.77
Nitrazepam	4.33	Midazolam	5.92
Zolpidem	4.36	Diazepam	6.23
Norclobazam	4.53	Tetrazeepam	6.77
Lorazepam	4.53	Prazepam	6.95
Clonazepam	4.60	Medazepam	7.25

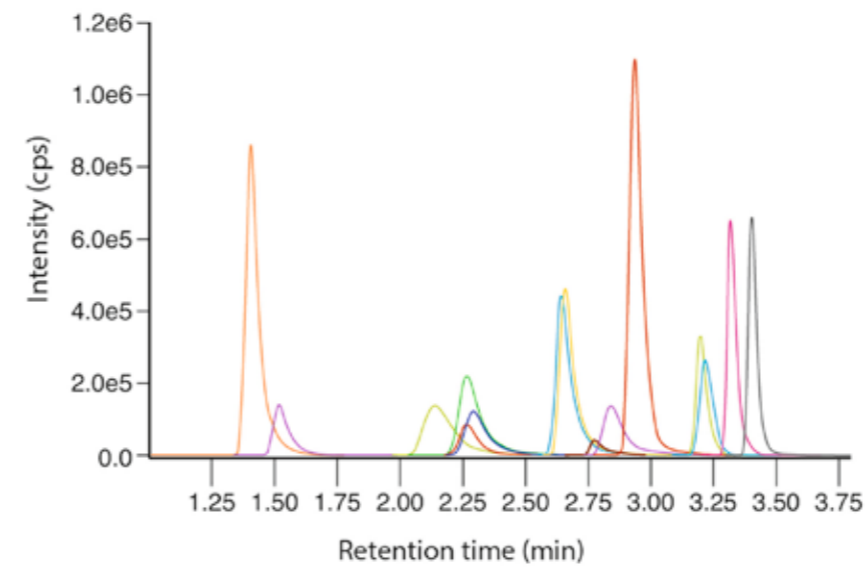
TDM **Mycophenolic Acid** **MPA**



Mycophenolic acid glucuronide (MPAG)	0.56
Mycophenolic acid	1.32

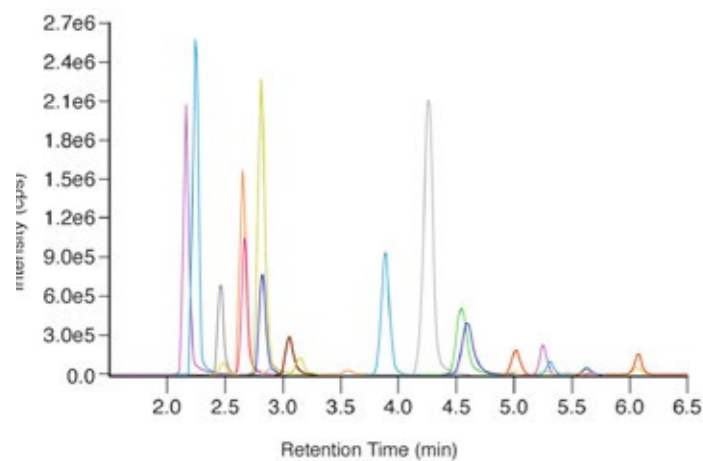


Sulpiride	0.82	Promethazine	3.24
Amisulpride	1.07	Ziprasidone	3.41
Paliperidone	1.39	Levomepromazine	3.54
Desmethyloanzapine	1.43	Perazine	3.93
Pipamperone	1.55	Zuclopenthixole	3.99
Melperone	1.58	Chlorpromazine	4.02
Risperidone	1.64	Sertindole	4.09
Norclozapine	1.81	Fluphenazine	4.23
Olanzapine	1.87	Dehydroaripiprazole	4.30
Norquetiapine	2.00	Chlorprothixene	4.36
Prothipendyl	2.13	Flupenthixole	4.39
Haloperidole	2.36	Thioridazine	4.47
Quetiapine	2.42	Aripiprazole	4.56
Clozapine	2.97	Zotepine	4.71



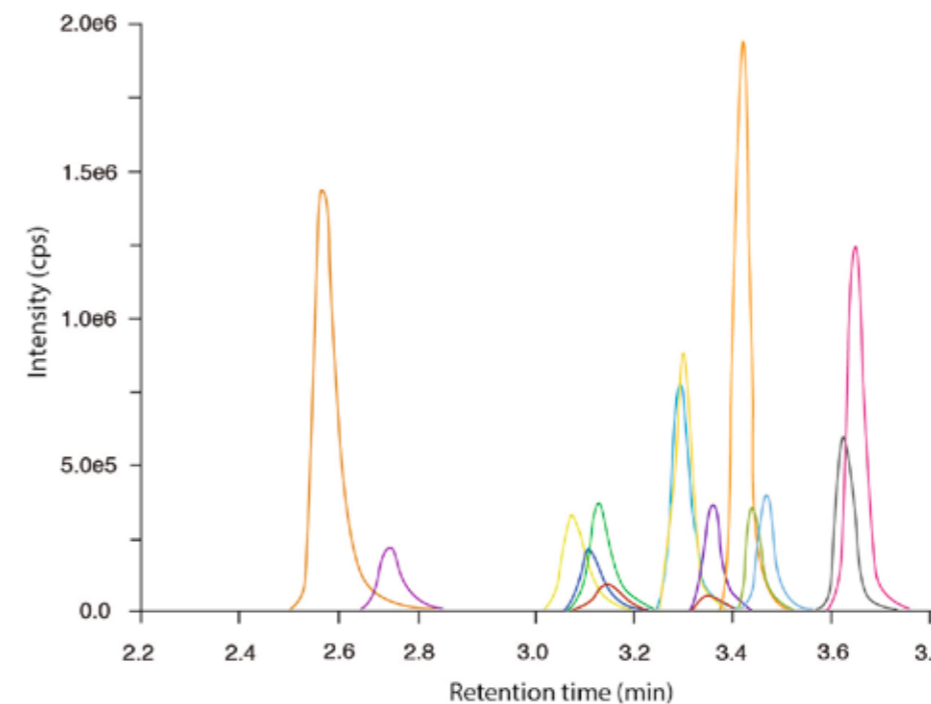
Norclozapine	1.40
Nordoxepin	1.52
Doxepin	2.14
Desipramine	2.27
Normaprotiline	2.27
Protriptyline	2.29
Nortriptyline	2.65
Maprotiline	2.66
Nortrimipramine	2.78
Imipramine	2.84
Clozapine	2.94
Norclomipramine	3.20
Amitriptyline	3.22
Trimipramine	3.32
Clomipramine	3.40

Direct Injection



Sulpiride	2.17	Promethazine	4.54
Amisulpride	2.24	Perazine	4.59
Paliperidone	2.46	Ziprasidone	4.99
Desmethyloanzapine	2.48	Levomepromazine	5.01
Pipamperone	2.65	Chlorpromazine	5.24
Risperidone	2.67	Zuclopenthixole	5.27
Melperone	2.81	Sertindole	5.31
Norclozapine	2.83	Fluphenazine	5.47
Olanzapine	2.91	Flupenthixole	5.58
Norquetiapine	3.06	Chlorprothixene	5.63
Prothipendyl	3.15	Thioridazine	5.63
Haloperidole	3.55	Dehydroaripiprazole	5.66
Quetiapine	3.88	Zotepine	6.05
Clozapine	4.25	Aripiprazole	6.07

Direct Injection



Norclozapine	2.57
Nordoxepin	2.70
Doxepin	3.07
Protriptyline	3.11
Desipramine	3.13
Normaprotiline	3.15
Nortriptyline	3.29
Maprotiline	3.30
Nortrimipramine	3.35
Imipramine	3.36
Clozapine	3.42
Norclomipramine	3.44
Amitriptyline	3.47
Clomipramine	3.62
Trimipramine	3.65

Your choice in HPLC & LC-MS/MS diagnostics

- + Certified and quality approved CE-IVD methods
- + Unique RECIPE TDM 200 Kit System
- + Preferred partner in more than 80 countries

+RECIPE

**RECIPE Chemicals +
Instruments GmbH**

Dessauerstraße 3
80992 München

Tel. +49 89 54 70 81 - 0

Fax. +49 89 54 70 81 - 11

info@recipe.de

www.recipe.de