



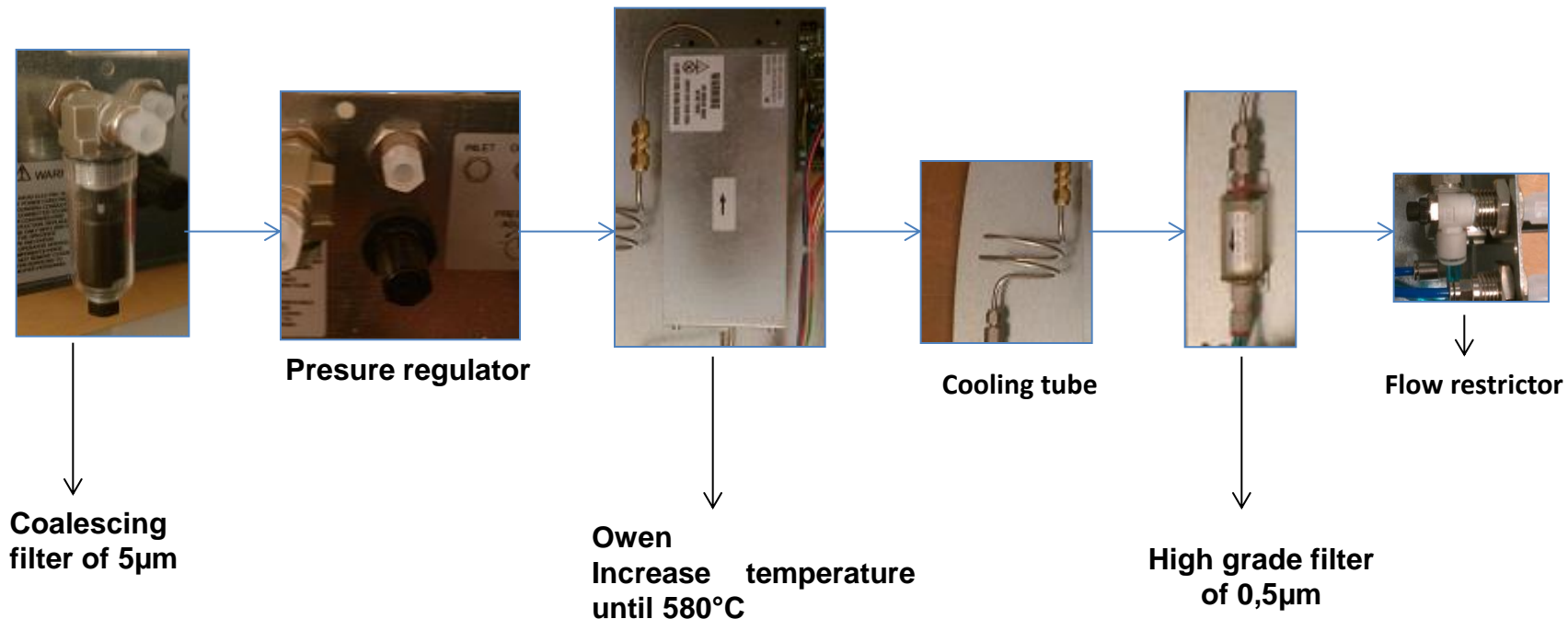
AIR ZERO GENERATOR:

-ZA series (without compressor)

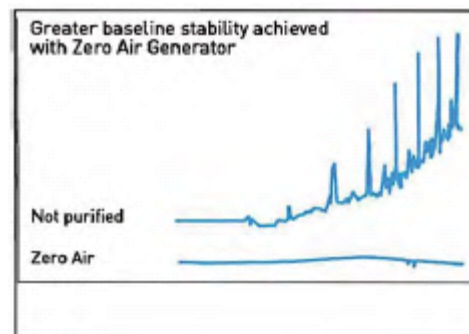


Zero air Alliance generator ZA serie

GENERAL INFORMATION OF AIR ZERO RUNNING



The low and constant hydrocarbon content of zero air helps improving baseline stability of combustion and reduces the frequency of recalibrations



FID STATION



Remove the three bottom screws



Remove the top panel

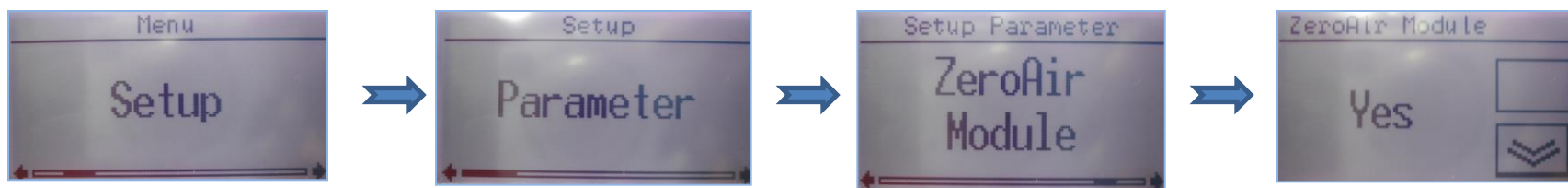


Disconnect the cable of the interface



Connect the RS485 cable

FID STATION: parameter



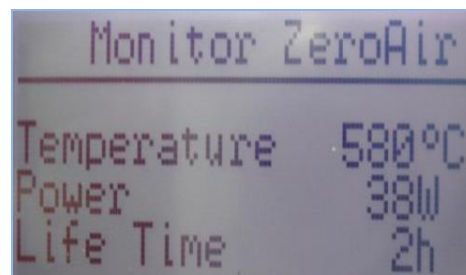
TA ACTIVATE: GO to MENU => PARAMETER => ZERO AIR MODULE



SLIDE LEFT TO RIGHT TO
ACCESS OF AIR ZERO
COMMUNICATION



First slide:
SWITCH ON / OFF
The generator



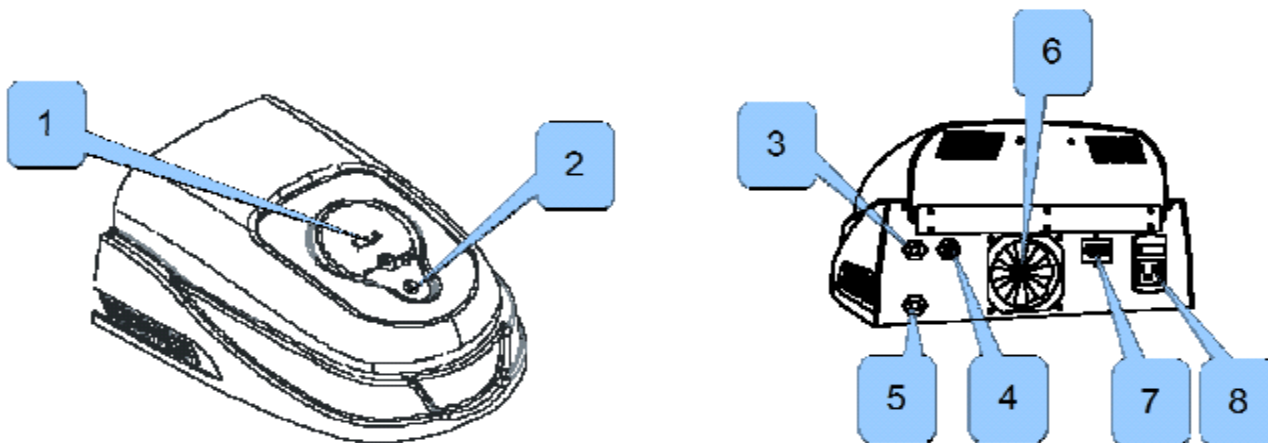
Second slide:
Air Zero state

Initial conditions

Max inlet hydrocarbon content	<100 ppm
Max inlet carbon monoxide content	<100 ppm
Min/ max Température	1°C/ 35 °C
Min/ max Pressure	3 / 10 bars
Inlet connected	1/8 "
Outlet connected	1/8 "
Dewpoint	< -20°C
Drain outlet fitting	6 mm
Fréquency	50/60 Hz
Supply voltage	230 VAC
Fuse rating	115V/4A 230V/2A
Power:	280 W 410 VA

Initial conditions

All connections, electric and pneumatic, are made at the back panel.



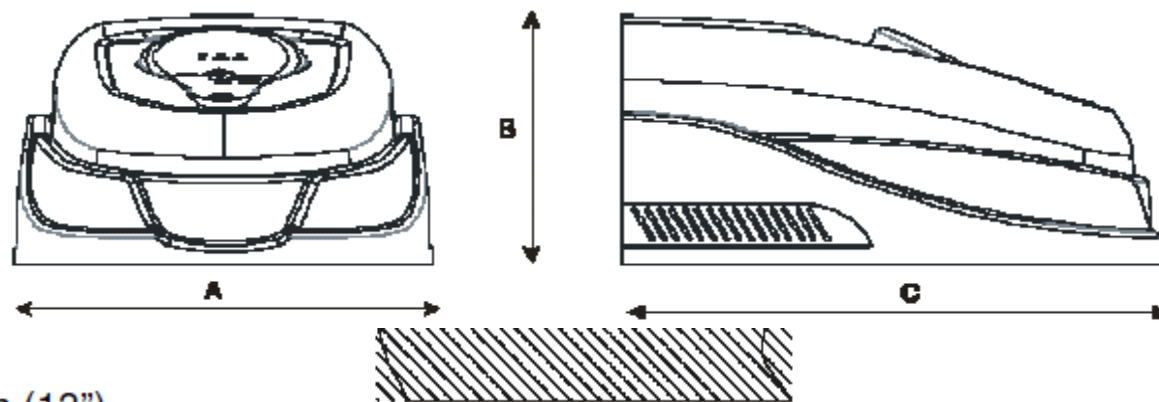
	Description
1	Status leds
2	START/STOP Button
3	Compress AIR inlet
4	Air outlet

	Description
5	WATER DRAIN purge
6	Cooling fan air (intake)
7	RS485 (optional)
8	Power Switch and power socket

Dimensions and installation

In order to ensure safe operation of the unit, the following steps must be taken prior to installation:

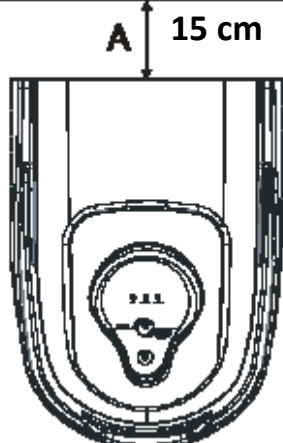
1. At least 6" (150 mm) clearance at the back for proper fan operation.
2. Adequate support for the weight (>10 kg.).
3. Access at the rear for making the pneumatic and electrical connections.



A = 34cm (13")

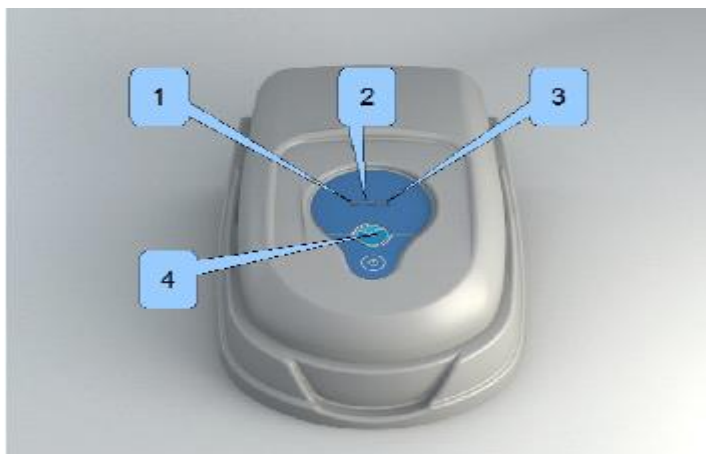
B = 20cm (7.9")

C = 43cm (16,9")



User interface

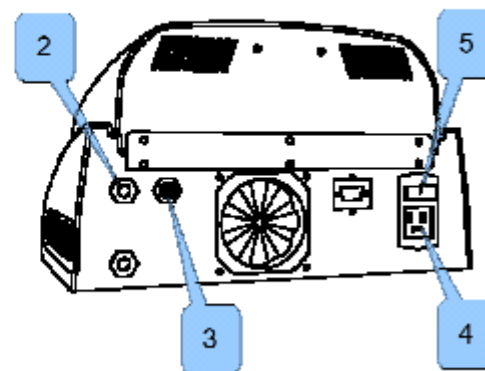
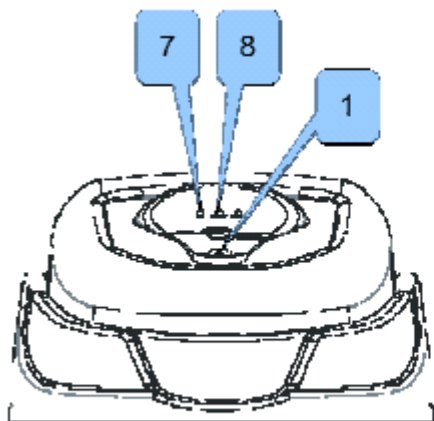
The front panel has three LEDs and a one button (4).



	Description
1	Green led
2	Yellow led
3	Red led
4	START/STOP Button

Status	Green led	Yellow led	Red led
STOP	ON	OFF	OFF
COOLING DOWN	FLASHING	OFF	OFF
WARMING UP	ON	FLASHING	OFF
READY	ON	ON	OFF
ALARM	X	X	FLASHING
CATALYST EXAUSTED	X	X	ON

Quick start



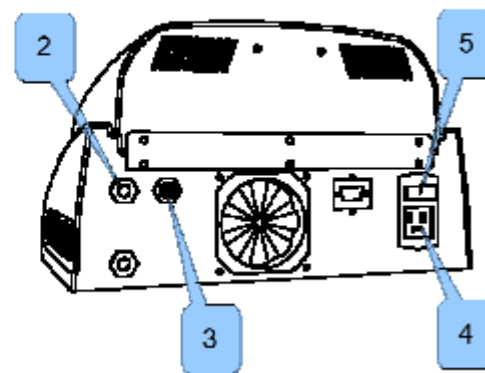
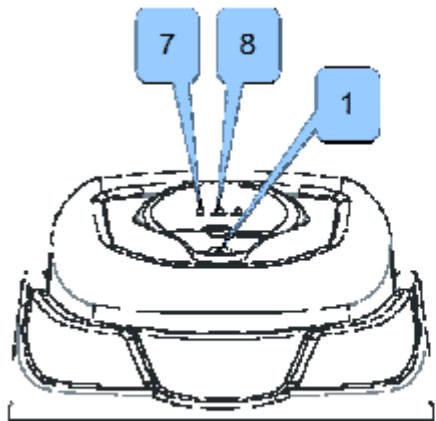
FIRST START-UP:

1. Connect the hose to the AIR inlet fitting (2).
2. Connect the hose to the AIR outlet fitting (3)
3. Connect the voltage wire to the power socket (4).
4. Turn on the power switch (5).
5. Start the internal oven heating pressing START/STOP button(1).
6. Wait until the yellow LED will be solid(8)

TURNING OFF THE MACHINE:

1. Stop the internal oven heating pressing START/STOP button(6).
2. Turn off the power switch (5).

Maintenance



BEFORE MAINTENANCE:

1. Stop the internal oven heating pressing START/STOP button(1).
2. Wait until Green led will be solid(7)
3. Turn off the power switch (5).
4. Disconnect the power cable from the voltage socket (4)
5. Disconnect the AIR's hose from the feed fitting (2).



The generator contains Hot elements. Ensure that it is fully cooled prior to shipment or servicing.

Maintenance

Opération	Interval	KIT parts ordering code
Exchange the Coalescing prefilter cartridges	1 year	SP.ZA.FILTER
Exchange the Outlet filter cartridges	1 year	SP.H2.WFILT.M
Remove the catalyst	When the Red Led is solid on	SP.ZA.SKIT1 for 1,5 L/in SP.ZA.SKIT3 for 3,5 L/in SP.ZA.SKIT6 for 6,0 L/in

Maintenance: filters



Unscrew the bowl of the filter



Unscrew the filter



Change the element



Remove the three bottom screws



Remove the four screws



Remove the Two screws



Remove the top panel

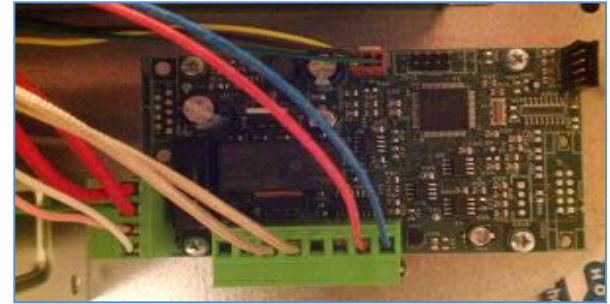


Remove the quick connection and change the filter

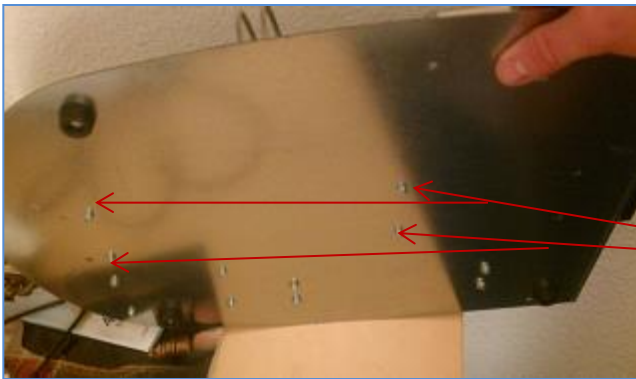
Maintenance: catalyst



Remove the fitting



Disconnect the wires



Remove the four screws

Troubleshooting

No power supply

No enough flow

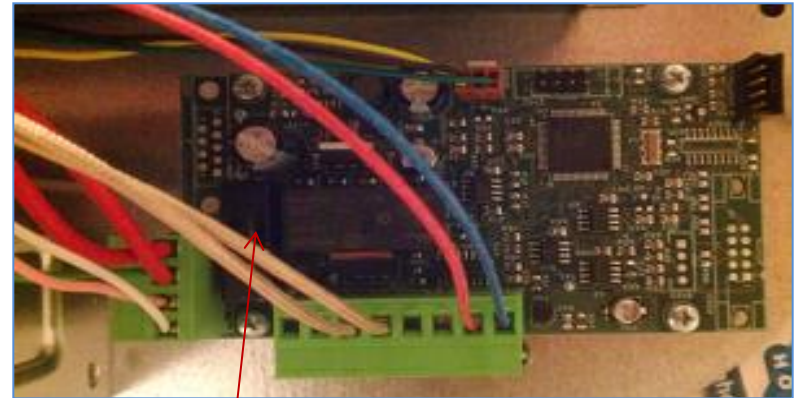
Generator in alarm red led

No power supply

Possible causes:

- 1- Fuse broken
- 2- Internal Power fault
- 3- Wires disconnected
- 4- Problem of Main board

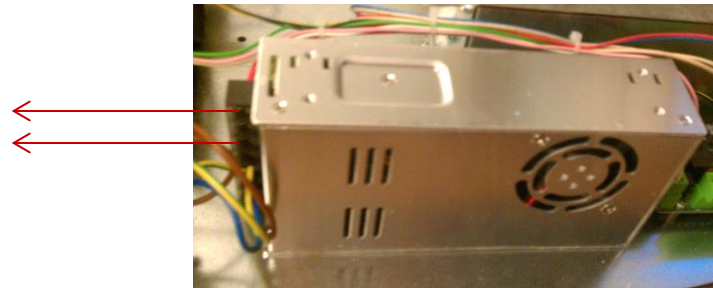
Check the fuse



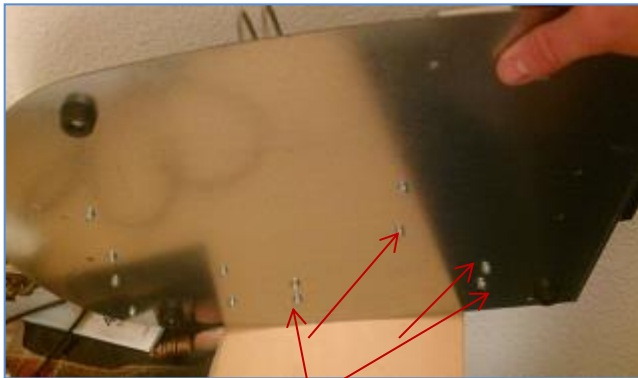
Check the fuses

Internal Power fault

Check the voltage: 24VDC



Change internal transformer

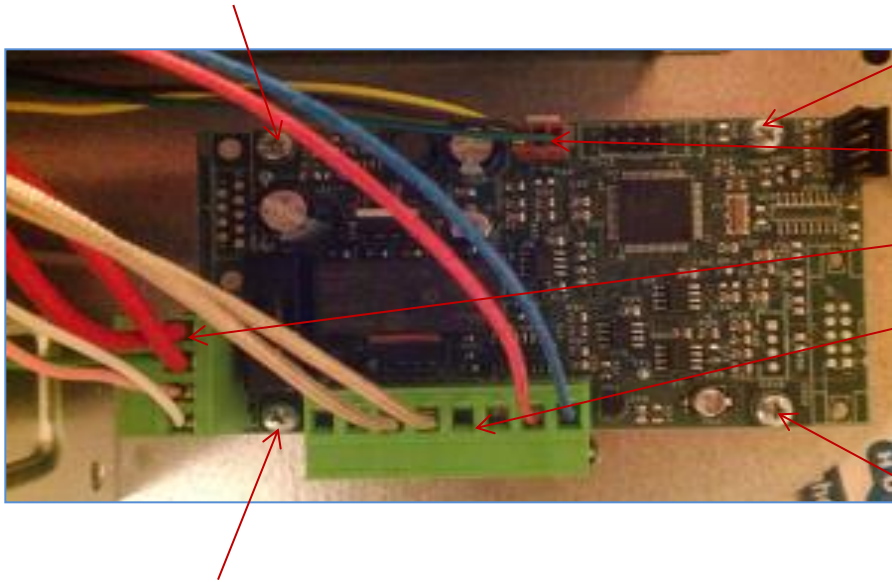


Remove the four screws



Remove electrical wires

Change Main board



- 1- Disconnect the fan
- 2- Disconnect the power supply
- 3- Disconnect the power catalyst
- 4- Remove the four screw

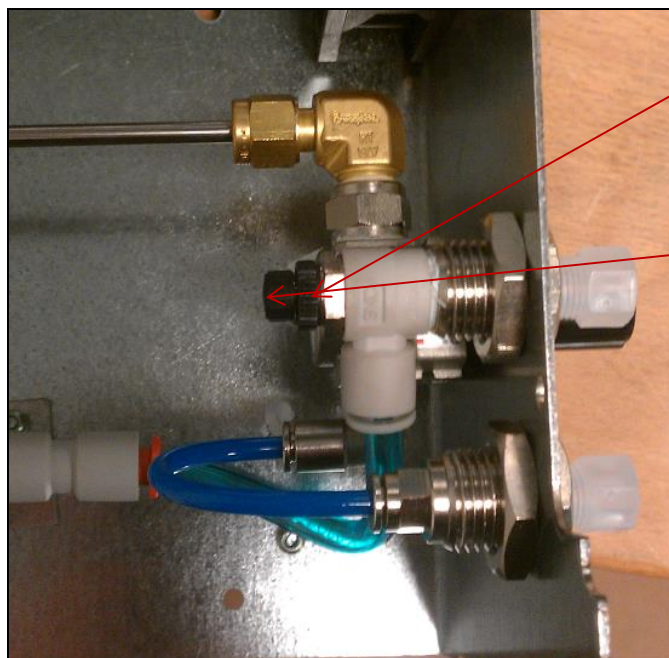
Not enough flow

Possible causes:

- 1- Check the flow and pressure of the airnetwork
- 2- Check the filter
- 3- Check the flow restrictor (use a flowmeter)
- 4- Restriction in the air line (check tube and cooling tube)



Flow restrictor



1- Unscews the lock nut

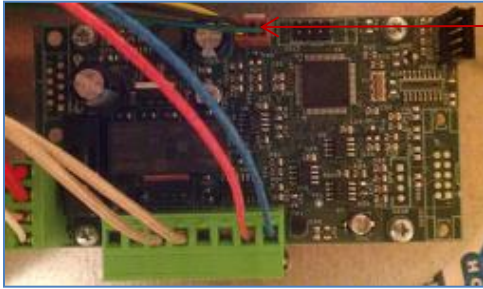
2- Turn right to decrease the flow
Turn left to increase the flow

Generator in alarm red led

Possible causes:

- 1- Service of the catalyst: change catalyst
- 2- Internal fuse broken
- 3- Fan Damaged
- 4- Catalyst damaged

Fan Damaged



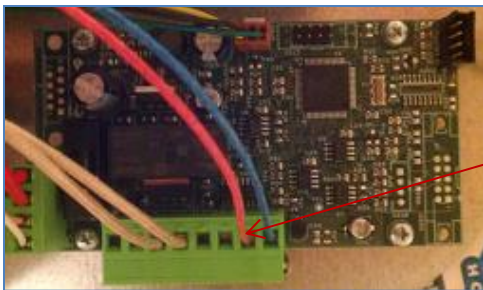
With the power on, check:

Black : +12V

Green : 0V

Yellow : running sensor (0-5V)

Catalyst damaged



Red/blue are the thermocouple , when the connector is inserted and with the power on:
-if it is still working, you can see only mV.
-If broken, normally you can see more than 1V



White wires are the heater, this test must be done with connector disconnect:

Measure the resistance with multimeter in Ohm.
This measure must be around 3ohms.