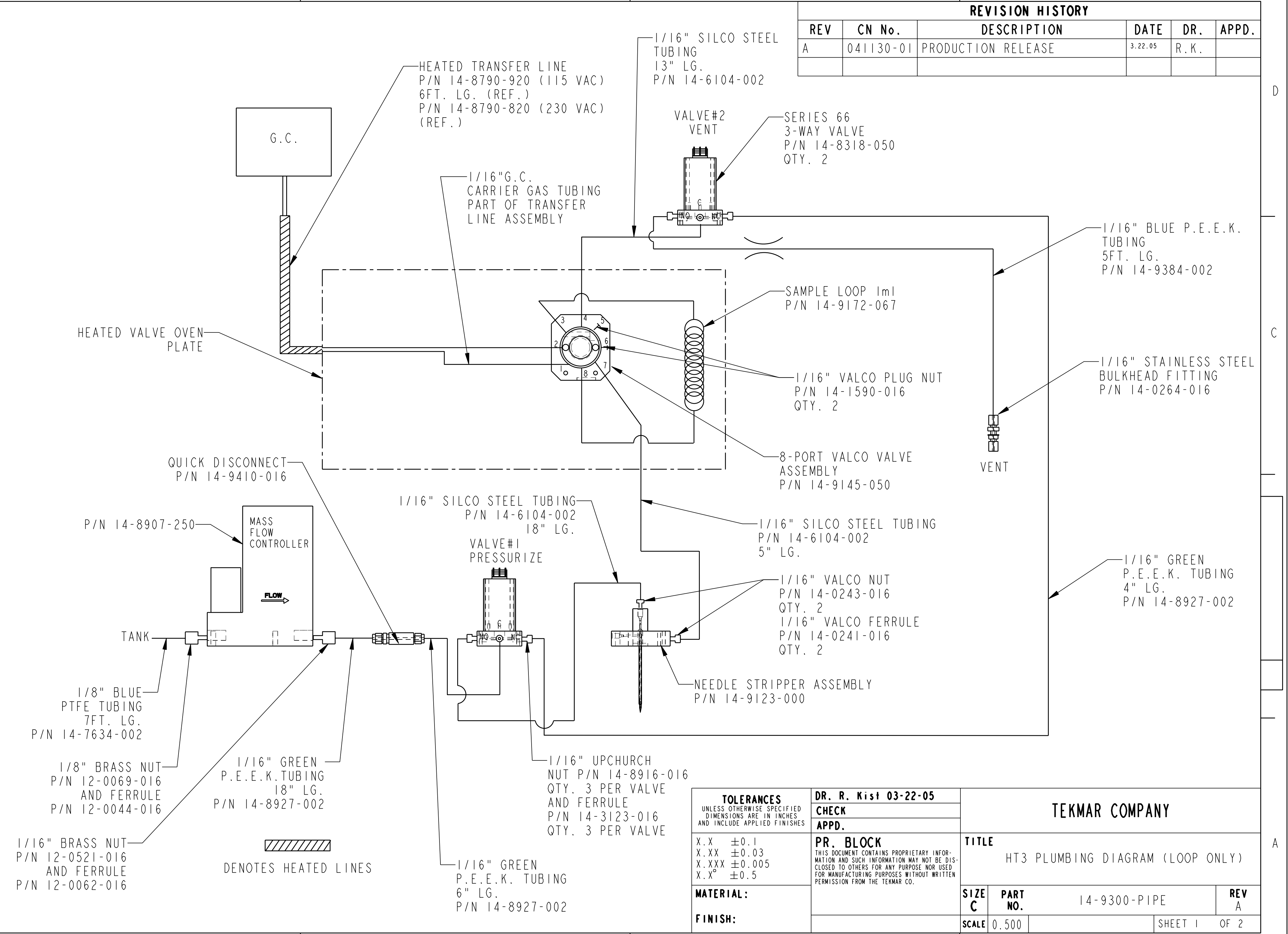



REVISION HISTORY					
REV	CN No.	DESCRIPTION	DATE	DR.	APPD.
A	041130-01	PRODUCTION RELEASE	3.22.05	R. K.	

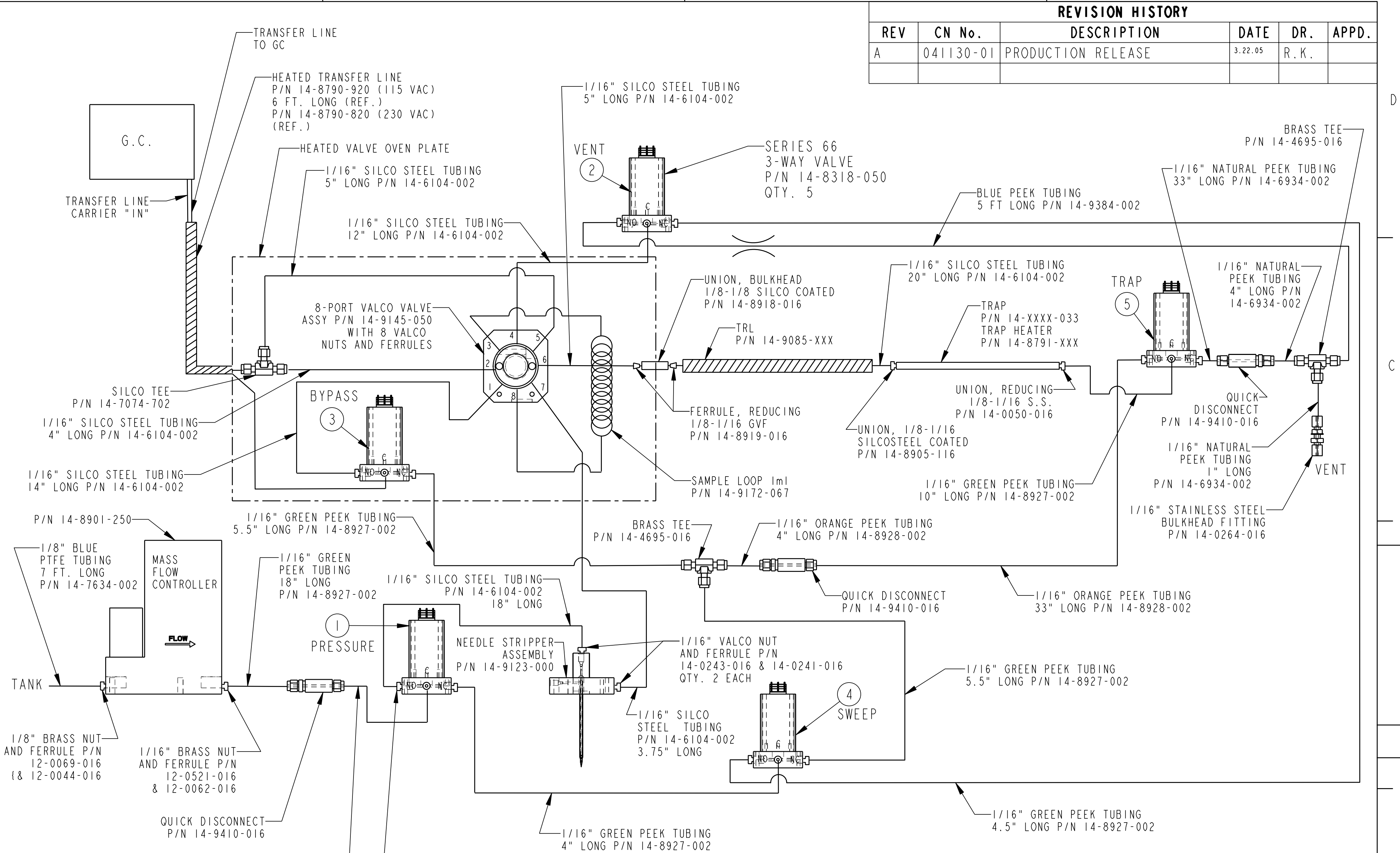


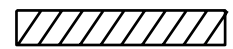
- 1/8" BLUE PTFE TUBING 7FT. LG. P/N 14-7634-002
- 1/8" BRASS NUT AND FERRULE P/N 12-0044-016
- 1/16" BRASS NUT AND FERRULE P/N 12-0521-016 P/N 12-0062-016
- 1/16" GREEN P.E.E.K. TUBING 18" LG. P/N 14-8927-002
- 1/16" GREEN P.E.E.K. TUBING 6" LG. P/N 14-8927-002
- 1/16" SILCO STEEL TUBING 18" LG. P/N 14-6104-002
- 1/16" SILCO STEEL TUBING 13" LG. P/N 14-6104-002
- 1/16" SILCO STEEL TUBING 5" LG. P/N 14-6104-002
- 1/16" UPCHURCH NUT P/N 14-8916-016 QTY. 3 PER VALVE AND FERRULE P/N 14-3123-016 QTY. 3 PER VALVE
- 1/16" VALCO NUT P/N 14-0243-016 QTY. 2
- 1/16" VALCO FERRULE P/N 14-0241-016 QTY. 2
- 1/16" VALCO PLUG NUT P/N 14-1590-016 QTY. 2
- 1/16" BLUE P.E.E.K. TUBING 5FT. LG. P/N 14-9384-002
- 1/16" GREEN P.E.E.K. TUBING 4" LG. P/N 14-8927-002
- 1/16" STAINLESS STEEL BULKHEAD FITTING P/N 14-0264-016
- 8-PORT VALCO VALVE ASSEMBLY P/N 14-9145-050
- SAMPLE LOOP 1ml P/N 14-9172-067
- HEATED TRANSFER LINE P/N 14-8790-920 (115 VAC) 6FT. LG. (REF.) P/N 14-8790-820 (230 VAC) (REF.)
- 1/16" G.C. CARRIER GAS TUBING PART OF TRANSFER LINE ASSEMBLY
- VALVE#1 PRESSURIZE
- VALVE#2 VENT
- NEEDLE STRIPPER ASSEMBLY P/N 14-9123-000
- QUICK DISCONNECT P/N 14-9410-016
- MASS FLOW CONTROLLER
- TANK
- G.C.
- HEATED VALVE OVEN PLATE

 DENOTES HEATED LINES

TOLERANCES UNLESS OTHERWISE SPECIFIED DIMENSIONS ARE IN INCHES AND INCLUDE APPLIED FINISHES X.X ±0.1 X.XX ±0.03 X.XXX ±0.005 X.X° ±0.5	DR. R. Kist 03-22-05		TEKMAR COMPANY	
	CHECK APPD.			
MATERIAL: FINISH:	PR. BLOCK THIS DOCUMENT CONTAINS PROPRIETARY INFORMATION AND SUCH INFORMATION MAY NOT BE DISCLOSED TO OTHERS FOR ANY PURPOSE NOR USED FOR MANUFACTURING PURPOSES WITHOUT WRITTEN PERMISSION FROM THE TEKMAR CO.		TITLE HT3 PLUMBING DIAGRAM (LOOP ONLY)	
	SCALE 0.500		SIZE C	PART NO. 14-9300-PIPE
			SHEET 1 OF 2	

REVISION HISTORY					
REV	CN No.	DESCRIPTION	DATE	DR.	APPD.
A	041130-01	PRODUCTION RELEASE	3.22.05	R. K.	



 DENOTES HEATED LINES

TOLERANCES UNLESS OTHERWISE SPECIFIED DIMENSIONS ARE IN INCHES AND INCLUDE APPLIED FINISHES X.X ±0.1 X.XX ±0.03 X.XXX ±0.005 X.X° ±0.5 MATERIAL: FINISH:	DR. R. Kist 03-22-05 CHECK APPD.	TEKMAR COMPANY TITLE HT3 PLUMBING DIAGRAM (LOOP & TRAP)		
	PR. BLOCK THIS DOCUMENT CONTAINS PROPRIETARY INFORMATION AND SUCH INFORMATION MAY NOT BE DISCLOSED TO OTHERS FOR ANY PURPOSE NOR USED FOR MANUFACTURING PURPOSES WITHOUT WRITTEN PERMISSION FROM THE TEKMAR CO.			SCALE 0.500