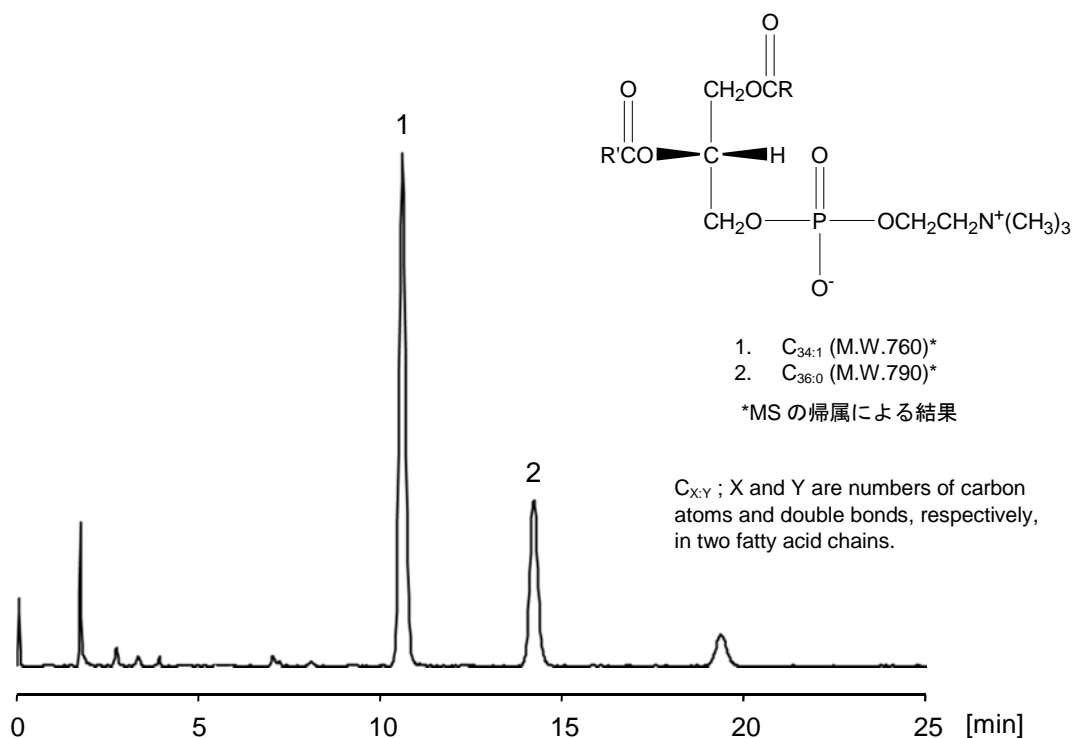


リン脂質の一つである卵黄由来のホスファチジルコリン（水素添加）をサンプルとして、検出器にNQAD、カラムにはCAPCELL PAK C₁₈ MGIII S5（4.6 mm i.d. x 150 mm）を用いた逆相モードによる分析例を紹介します。2成分ともに良好なピーク形状で保持されています。

Phosphatidylcholine of egg yolk is one of the phospholipids (hydrogenated). Its sample was analyzed with detector NQAD and a reverse phase column, CAPCELL PAK C₁₈ MGIII S5 (4.6 mm id x 150 mm). The two components were well retained with excellent peak profile.



【HPLC Conditions】

Column	: CAPCELL PAK C ₁₈ MGIII S5 ; 4.6 mm i.d. x 150 mm
Mobile phase	: H ₂ O / TFA / CH ₃ CN / CH ₃ OH / IPA = 1 / 0.1 / 45 / 50 / 5
Flow rate	: 1 mL/min
Temperature	: 40 °C
Detection	: NQAD (Evaporation 60 °C, Nebulizer 30 °C, Filter 5 sec)
Inj. vol.	: 10 μL
Sample dissolved in	: Phosphatidylcholine was dissolved in chloroform and 2-propanol at 1 mg/mL, and then diluted to 100 μg/mL with mobile phase.
	※ 1 μg/mL = 1 ppm