

SNIFFER 9000

Options

SNIFFER 9000 training and test kit

SNIFFER 9000 Softwareoption

SNIFFER 9000 „Finger Span“ option

SNIFFER 9000

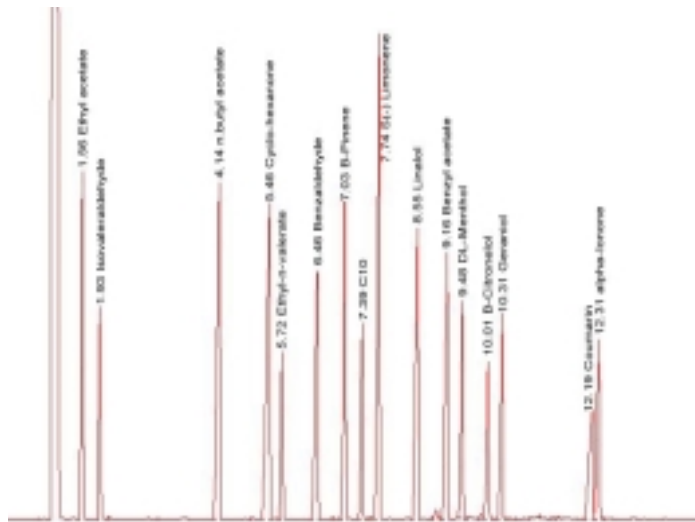
training and test kit

Cod. No. 9 100085

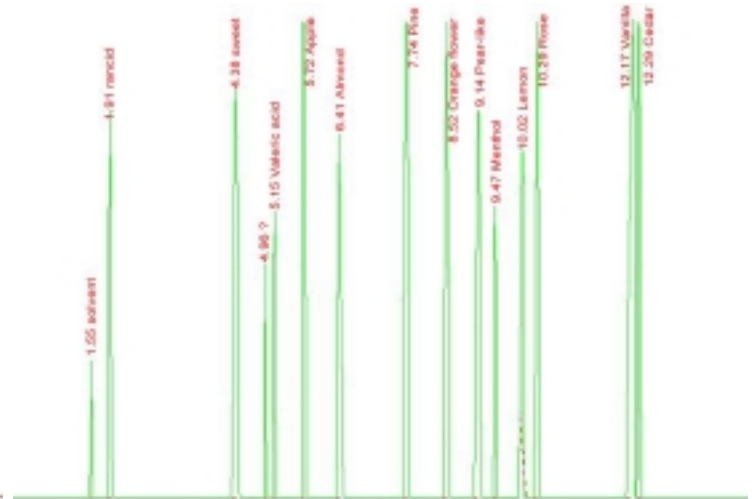
The SNIFFER 9000 training and test kit allows the user to train himself using a well known test mixture with reference chromatograms and descriptions of the odors.

The kit consists of a 30 meter column a standard mixture with 17 components, Pressfit, pre columns ferrules and a user manual with different flow descriptions.

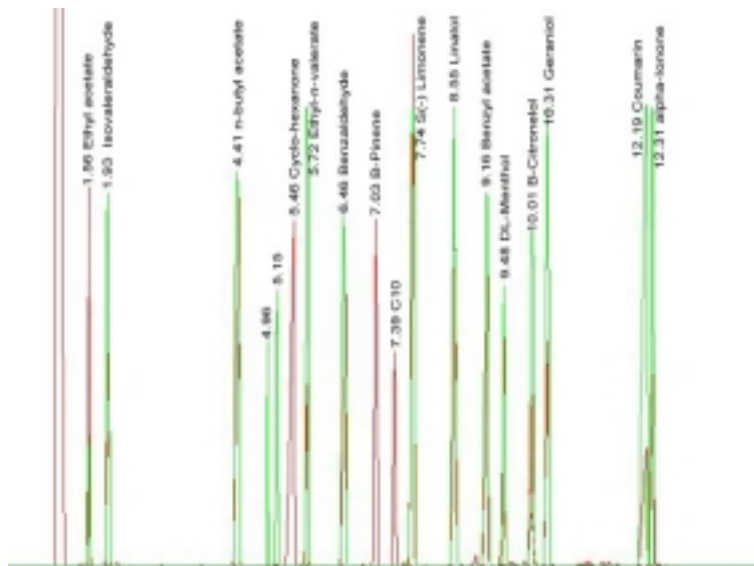
This training or test kit has been developed to give to the GC Olfactive users a powerful tool to train them self and to learn how to work with the SNIFFER 9000.



FID Chromatogramm



Intensity



Overlay FID Chromatogramm and Intesity



GC Column Zebron ZB1, 30m, ID 0.53mm, film 1.5 u



Standard mixture with 17 components



Complete documentation with description of the standard mixture, reference chromatograms, different flow rates to be used and tips and tricks on how to get the best performance with your GC-Olfactive system.

Features

New users can be easy trained on how to use GC-Olfactive systems

Included known and described components mixture

Included separation column

Included description of method parameters, odour description of components and refernce chromatograms

SNIFFER 9000

Software option

Cod. No. 9 100080

The SNIFFER 9000 Software option adds several unique features to the hand controller like temperature programming of the heated interface, dynamic adjustment of the intensity potentiometer and full scale marker using F2 button.



Features

Temperature programmable heated interface

Dynamic adjustment of intensity

Full scale marker using F2 button

Additional full scale range available

SNIFFER 9000

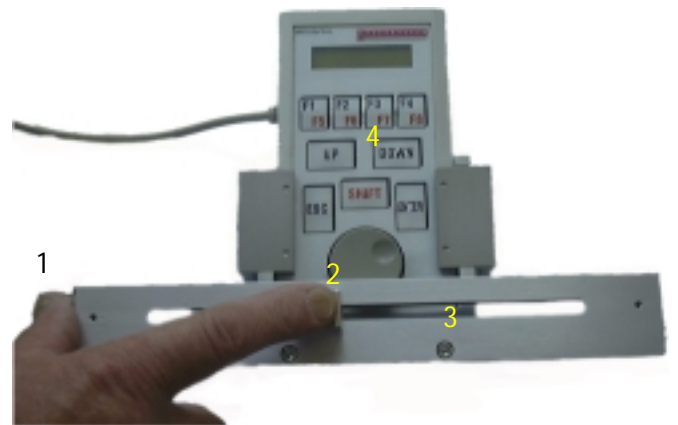
„Finger Span“ option

Cod. No. 9 100081

The SNIFFER 9000 "Finger Span" option is an additional mechanical device which allows the intensity indication to be adjusted to the individual distance between the thumb and another finger of the panelists indicating their impression of the odor of the components.

This option is installed directly to the remote hand controller of the SNIFFER 9000 and requires the Software option to be able to use the dynamic adjustment of intensity.

This feature allows the user to adjust the fullscale of the intensity marker to his personal distance between thumb and major or index finger. In this case there is always the same intensity indicated even when different panelists are working with the same instrument.



Drawing of the "Finger Span" prototype.

1. fixed position for the thumb
2. mobile position for the major or index finger
3. cursor track
4. SNIFFER 9000 Hand Controller

Features

Adjustable to the individual distances between thumb and finger

Easy to adapt to the remote hand controller

Ordering informations

<i>Part No.</i>	<i>Description</i>
	Base Unit
9 1000050	Sniffer 9000 (80 cm Interface) GC/Olfactive measurement system includes: Dedicated flexible heated interface 80 cm length Heater control unit Hand held control unit Special analog output to record odor intensity Standard outfit, Manual
9 1000051	Sniffer 9000 (140 cm Interface) GC/Olfactive measurement system includes: Dedicated flexible heated interface 140 cm length Heater control unit Hand held control unit Special analog output to record odor intensity Standard outfit, Manual
	Accessories / Spare parts
9 1000055	Flexible heated interface 80 cm (standard)
9 1000056	Flexible heated interface 140 cm (optional)
9 1000060	Outlet glass nozzle cone
9 1000061	O-Ring for outlet glass nozzle cone
9 1000062	Fused-Silica transfer line
9 1000063	Press-fit with make-up-line
9 1000080	SNIFFER 9000 Software option
9 1000081	SNIFFER 9000 "Finger Span" option
9 1000085	SNIFFER 9000 Training and test kit

Manufactured by:



Distributed by:

Steinwiesenstrasse 3
CH-8952 Schlieren, Switzerland
Tel. +41 1 732 31 31 FAX +41 1 730 61 41