



Agilent OpenLAB Chromatography Data System

EZChrom and ChemStation Editions

**Supported Instruments and
Firmware Guide**



Agilent Technologies

Notices

© Agilent Technologies, Inc. 2012

No part of this manual may be reproduced in any form or by any means (including electronic storage and retrieval or translation into a foreign language) without prior agreement and written consent from Agilent Technologies, Inc. as governed by United States and international copyright laws.

Manual Part Number

M8300-90012

Edition

Forth edition, May, 2012

Agilent Technologies, Inc.

Software Revision

This guide is valid for Agilent OpenLAB Chromatography Data System (CDS) version A.01.04.

Warranty

The material contained in this document is provided "as is," and is subject to being changed, without notice, in future editions. Further, to the maximum extent permitted by applicable law, Agilent disclaims all warranties, either express or implied, with regard to this manual and any information contained herein, including but not limited to the implied warranties of merchantability and fitness for a particular purpose. Agilent shall not be liable for errors or for incidental or consequential damages in connection with the furnishing, use, or performance of this document or of any information contained herein. Should Agilent and the user have a separate written agreement with warranty terms covering the material in this document that conflict with these terms, the warranty terms in the separate agreement shall control.

Technology Licenses

The hardware and/or software described in this document are furnished under a license and may be used or copied only in accordance with the terms of such license.

Restricted Rights Legend

If software is for use in the performance of a U.S. Government prime contractor subcontract, Software is delivered and licensed as "Commercial computer software" as defined in DFAR 252.227-7014 (June 1995), or as a "commercial item" as defined in FAR 2.101(a) or as "Restricted computer software" as defined in FAR 52.227-19 (June 1987) or any equivalent agency regulation or contract clause. Use, duplication or disclosure of Software is subject to Agilent Technologies' standard commercial license terms, and non-DOD Departments and Agencies of the U.S. Government will receive no greater than Restricted Rights as defined in FAR 52.227-19(c)(1-2) (June 1987). U.S. Government users will receive no greater than Limited Rights as defined in FAR 52.227-14 (June 1987) or DFAR 252.227-7015 (b)(2) (November 1995), as applicable in any technical data.

Safety Notices

CAUTION

A **CAUTION** notice denotes a hazard. It calls attention to an operating procedure, practice, or the like that, if not correctly performed or adhered to, could result in damage to the product or loss of important data. Do not proceed beyond a **CAUTION** notice until the indicated conditions are fully understood and met.

WARNING

A **WARNING** notice denotes a hazard. It calls attention to an operating procedure, practice, or the like that, if not correctly performed or adhered to, could result in personal injury or death. Do not proceed beyond a **WARNING** notice until the indicated conditions are fully understood and met.

Contents

Introduction 6

OpenLAB CDS Driver Information: 6

Compact and Value Line System 7

OpenLAB CDS EZChrom Edition Compact:7

OpenLAB CDS EZChrom A.04.04 Compact Version 7

OpenLAB CDS EZChrom Edition and ChemStation Edition Value Line System: 7

OpenLAB CDS EZChrom A.04.04 Value Line System 7

OpenLAB CDS ChemStation C.01.04 Value Line System 8

Instrument LAN Interface Card for EZChrom and ChemStation Editions: 9

EZChrom Edition Firmware Support Information – Full Version: 10

Compatibility with GC Hardware 10

Inficon 3000 Micro GC 11

ALS Summary (auto injector, tray and associated controller) 11

7650 GC ALS hardware: 11

7693 ALS hardware: 11

7683B ALS hardware: 12

7683A ALS hardware: 12

Agilent 1100/1200 LC: Enhanced Driver only 14

Agilent A/D15

Agilent 1220 LC System 16

Agilent 1260 LC 17

Agilent 1290 LC 18

Alltech Associates LC Detectors 18

CTC Autosamplers (Agilent and CTC) with LC 19

Hitachi LaChrom LC (Supported On Windows XP and IE 8 Only)	19
Hitachi LaChrom Elite LC (Supported on XP, Windows 7 32-bit, IE 8)	20
Hitachi LaChrom Ultra LC (Supported on XP, Windows 7 32-bit, IE 8)	20
Hitachi Chromaster LC (Supported on XP, Windows 7 32-bit, IE 8)	21
Jasco 1500/2000 LC (Supported on Windows XP Only)	21
Jasco 1500/2000 LC (continued)	21
Jasco X-LC (Supported on Windows XP Only)	23
PerkinElmer Nelson Interfaces	23
PerkinElmer Series 200LC	23
PerkinElmer Autosystem XL	24
Valco Valves	24
Varian CP-3800	24
Varian 3900-GC	25
Varian MicroGC25	
Waters Alliance25	
EZChrom Compact Edition Firmware Support Information:	26
Compact Edition Compatibility with GC Hardware	26
Agilent 1120 Compact LC	26
Agilent 1220 LC System	27
EZChrom Value Line Edition Firmware Support Information:	28
Value Line Compatibility with GC Hardware	28
Agilent 1120 Compact LC	28
Agilent 1220 LC System	29
ChemStation Edition Firmware Support Information:	30
LC Instrument Related Note:	30

Agilent LC Modules: 11XX and 12XX	31
High Throughput	34
Other	35
Agilent Integrated Systems	36
Agilent PrepLC Driver (Varian)	36
Agilent Capillary Electrophoresis Driver	37
Compatibility with GC Hardware	37
ALS Summary (auto injector, tray and associated controller)	38
7650 GC ALS hardware:	38
7693 ALS hardware	38
7683B ALS hardware	38
7683A ALS hardware	39
Headspace support with GC	39
Control of PAL Auto sampler with GC	40
Agilent 35900 A/D Converter	40
Agilent 35900E A\D Converter support with Agilent Instrument	41
Agilent MS Driver for LC\MS Support	41
ChemStation Value Line Edition Firmware Support Information:	42
Value Line Compatibility with GC Hardware	42
Value Line Compatibility with Agilent 1120 Compact LC	42
Value Line Compatibility with Agilent 1220 LC System	43
In This Book	44

Introduction

OpenLAB CDS Driver Information:

This guide presents the supported instruments and firmware for operation of the Agilent OpenLAB Chromatography Data System (CDS).

The instrument driver and firmware versions listed have been verified to work with EZChrom edition version A.04.04 and ChemStation edition version C.01.04. This guide should only be used for these versions. All instrument drivers are supported on Windows XP, Windows Vista, and both Windows 7 SP1 32-bit/64-bit unless otherwise noted.

ChemStation Edition C.01.04	Driver Package A.01.04
LC/CE Driver	LC/CE Driver ver. A.02.05
Prep LC Driver	Prep LC Driver ver. A.01.01
GC Driver	GC Driver ver. A.01.04 78xx Driver ver. 4.02 68xx Driver ver. 6.11
LCMS Driver	Built into software

EZChrom Edition A.04.04	Driver Package
LC Driver	LC Driver ver. A.02.05
GC Driver	GC Driver ver. A.01.04 78xx Driver ver. 4.02 68xx Driver ver. 6.11

Earlier driver and firmware versions than those listed here are not supported. If you have more recent firmware, consult with your instrument manufacturer to determine compatibility.

Compact and Value Line System

OpenLAB CDS EZChrom Edition Compact:

OpenLAB CDS EZChrom Edition A.04.04 offers a Compact version. With OpenLAB CDS EZChrom Edition Compact there are restrictions in the functionality of the Workstation configuration and instrument control. The supported modules and firmware options for Compact are shown in the noted sections of this document (refer to table of contents). A summary of OpenLAB CDS EZChrom Edition Compact is described below:

OpenLAB CDS EZChrom A.04.04 Compact Version

- Compact version only exists with OpenLAB CDS EZChrom.
- Supported only with the workstation configuration.
- Some restrictions in functionality of OpenLAB CDS EZChrom software.
- Allows control of the Agilent 1120 and 1220 LC.
- Allows control of the Agilent 6820 and 7820A GC.
- Allows control of the Agilent 490 Micro GC, the Varian 490-GC Micro-GC, and the Varian CP-4900 Micro-GC.

OpenLAB CDS EZChrom Edition and ChemStation Edition Value Line System:

Both OpenLAB CDS EZChrom Edition A.04.04 and ChemStation Edition C.01.04 offer a Value Line System. The Value Line version of OpenLAB CDS EZChrom and ChemStation Edition offer the full functionality of the Workstation configuration while restricting instrument control. The supported modules and firmware options for Value Line System are shown in the noted sections of this document for both the EZChrom and ChemStation Editions (refer to table of contents). A summary of the Value Line System is described below:

OpenLAB CDS EZChrom A.04.04 Value Line System

- Supported only with the Workstation configuration.
- Offers full functionality of OpenLAB CDS EZChrom Edition software..
- Allows control of the 1120 and 1220 LC with all modules except modular pumps.
- Allows control of the 7820A.
- Allows control of the Agilent 490 Micro GC, the Varian 490-GC Micro-GC, and the Varian CP-4900 Micro-GC

OpenLAB CDS ChemStation C.01.04 Value Line System

- Supported only with stand-alone Workstation configuration.
- Offers full functionality of OpenLAB CDS ChemStation Edition software.
- Allows control of the 1120 and 1220 LC plus with all modules except modular pumps.
- OpenLAB CDS ChemStation Value Line Option for LC does not support LC-MS configurations.
- Allows control of the 7820A GC.

Instrument LAN Interface Card for EZChrom and ChemStation Editions:

Product	Hardware	Supported Firmware Version (minimum)	Notes
G1369C	Network Card	B.06.40 005	10/100BaseT
G1369B	Network Card	B.01.01	10/100BaseT
G1369A	Network Card	C.03.00	10/100BaseT
J4100A	Jet Direct Card	K.08.32 or higher	10/100BaseT

EZChrom Edition Firmware Support Information – Full Version:

Compatibility with GC Hardware

Instrument	Model	Supported Firmware Version (minimum)	Software Driver	Notes
7890A	G3440A G3442A G3443A	A.01.14	78xx-4.02	
7820A	G4350A	A.01.12.002	78xx-4.02	RTL, CFT, and method transfer are not supported
6890N	G1530N G1540N	N.06.07	68xx-6.11	N.06.07 needed for 7693A support
6890A 6890Plus	G1530A G1540A	A.03.08	68xx-6.11	
6850 Serial # >= US10243001	G2630A	A.06.02	68xx-6.11	A.06.02 needed for 7693A support
6850 Serial # <= US00003200	G2630A	A.03.03 A.03.07	68xx-6.11	A.03.07 needed for 7693A support
6850 Handheld Controller	G2629A	A.05.06		For 7683A\B
6820	G1176A G1180A	A.01.03		Inlets: S/S, PP Detectors: FID, TCD, μECD, NPD
490 Micro GC	G3581A	1.40 build 45	1.9.0.0	TCP-IP
CP-4900 Micro-GC		1.40 build 45	1.9.0.0	TCP-IP
490-GC Micro-GC		1.40 build 45	1.9.0.0	TCP-IP

Inficon 3000 Micro GC

Instrument	Model	Supported Firmware Version (minimum)	Software Driver	Notes
MicroGC Standard		C0.02.12 or D0.02.08	Classic	RS-232
MicroGC Quad		C0.02.12 or D0.02.08	Classic	RS-232 (2 ports req'd)
3000 MicroGC		3.7	Classic	TCP/IP

ALS Summary (auto injector, tray and associated controller)

7650 GC ALS hardware:

Instrument	Model	Supported Firmware Version (minimum)	Software Driver	Notes
Injector	G4567A	A.10.00	78xx-4.02	

7693 ALS hardware:

Instrument	Model	Supported Firmware Version (minimum)	Software Driver	Notes
7693 Injector	G4513A	A.10.06	68xx-6.11 78xx-4.02	
7693 Tray	G4514A	A.10.16	68xx-6.11 78xx-4.02	
BCR/Mixer	G4515A	A.10.04	68xx-6.11 78xx-4.02	Heating/Mixing Only
External Controller	G4516A	A.01.04	68xx-6.11	
6890Plus ALS card upgrade	G4517A	A.01.04	68xx-6.11	
LVI Syringe Carriage	G4521A	n/a	68xx-6.11 78xx-4.02	
Cooling Accessory	G4522A	n/a	68xx-6.11 78xx-4.02	
Tray with BCR/Mixer	G4520A	A.10.16	68xx-6.11 78xx-4.02	Heating/Mixing Only

ALS Summary (auto injector, tray and associated controller)

7683B ALS hardware:

Instrument	Model	Supported Firmware Version (minimum)	Software Driver	Notes
7683B Injector	G2913A	A.11.03	68xx-6.11 78xx-4.02	
7683B Tray	G2614A	A.02.01	68xx-6.11 78xx-4.02	
BCR/Mixer	G2615A	n/a	68xx-6.11 78xx-4.02	Mixing Only

7683A ALS hardware:

Instrument	Model	Supported Firmware Version (minimum)	Software Driver	Notes
7683A Injector	G2613A	A.11.03	68xx-6.11 78xx-4.02	
7683A Tray	G2614A	A.02.01	68xx-6.11 78xx-4.02	
BCR/Mixer	G2615A	n/a	68xx-6.11 78xx-4.02	Mixing Only

Headspace support with GC:

Instrument	Model	Supported Firmware Version (minimum)	Software Revision	Notes
7697A Headspace	7697A	A.01.04	G7318AA B.01.03	68xx-6.11 78xx-4.02 GC RC.NET Driver Support Only
G1888 Headspace	G1888	A.01.10	G2924AA B.01.03	68xx-6.11 78xx-4.02 GC RC.NET Driver Support Only
Headspace	G1289B/ G1290B (7694B)	1.05	G2924AA B.01.03	Out of Support
Headspace	G1883A (7694E)	1.12		Not Supported

Control of PAL Auto sampler with GC

Instrument	Model	Supported Firmware Version (minimum)	Software Revision	Notes
CTC Combi-PAL for Liquid and Headspace Injection (SPME Optional)	G6500-CTC	Agilent 2.6.8 or 4.1.5	G3382AA B.01.03	68xx-6.11 78xx-4.02 GC RC.NET Driver Support Only
CTC Combi-PAL 80 cm for Liquid Injection (SPME, Headspace Optional)	G6501-CTC	Agilent 2.6.8 or 4.1.5	G3382AA B.01.03	68xx-6.11 78xx-4.02 GC RC.NET Driver Support Only
CTC Combi-PAL 120 cm for Liquid Injection (SPME, Headspace Optional)	G6509-CTC	Agilent 2.6.8 or 4.1.5	G3382AA B.01.03	68xx-6.11 78xx-4.02 GC RC.NET Driver Support Only
CTC GC-PAL for Liquid Injection (SPME Optional)	G6502-CTC	Agilent 2.6.8 or 4.1.5	G3382AA B.01.03	68xx-6.11 78xx-4.02 GC RC.NET Driver Support Only
Agilent GC Sampler 80 cm for Liquid Injection (SPME, Headspace Optional)	G6501B	Agilent 4.1.5	G3382AA B.01.03	68xx-6.11 78xx-4.02 GC RC.NET Driver Support Only
Agilent GC Injector 80 cm for Liquid Injection (SPME Optional)	G6502B	Agilent 4.1.5	G3382AA B.01.03	68xx-6.11 78xx-4.02 GC RC.NET Driver Support Only
Agilent GC Sampler 120 cm for Liquid Injection (SPME, Headspace Optional)	G6509B	Agilent 4.1.5	G3382AA B.01.03	68xx-6.11 78xx-4.02 GC RC.NET Driver Support Only

Agilent 1100/1200 LC: Enhanced Driver only

Module Type	Module Names	Communications	Supported in EZChrom Edition?	Supported Firmware Versions (minimum)
System	1100/1200 LC	TCP/IP	Yes	N/A
Isocratic, Binary and Quaternary Pump, including Solvent Selection Valve	G1310A, G1311A, G1312A	(CAN Cable)	Yes	A.06.32
Binary Pump SL	G1312B	(CAN Cable)	Yes	A.06.32
Preparative Pump	G1361A	(CAN Cable)	Not Supported	N/A
Preparative Micro/ Cap Pump	G1376A	(CAN Cable)	Yes	A.06.32
NanoFlow Pump	G2226A	(CAN Cable)	Yes	A.06.32
Column Compartment, Including Column Selection Valve	G1316A, G1316B (SL)	(CAN Cable)	Yes, except G1316A#56 microvalve control	A.06.32
ALS, including Thermostatted option	G1313A, G1329A, B	(CAN Cable)	Yes, except #21 multi-draw kit	A.06.32
ALS, including Thermostatted option	G1313A, G1329A, B	(CAN Cable)	Yes, except #21 multi-draw kit	A.06.32
Wellplate Samplers, including HiP and Thermostatted options	G1367A,B,C, D (+Opt. G1330A,B)	(CAN Cable)	Yes	A.06.32
MicroWellPlate Autosampler	G1377A	(CAN Cable)	Not Supported	N/A
Thermostated Micro Autosampler	G1389A	(CAN Cable)	Not Supported	N/A
Dual Loop Autosampler	G2258A	(CAN Cable)	Not Supported	N/A
Preparative Autosampler	G2260A	(CAN Cable)	Not Supported	N/A
Plate Handler	G2257A	(CAN Cable)	Not Supported	N/A
Fraction Collector	G1364A	(CAN Cable)	Not Supported	N/A
Fraction Collector	G1364B, C, D AND G1330B	(CAN Cable)	Yes	A.06.32
External Valve	G1157A, G1158A/B, G1159A, G1160A		Yes	A.06.02
External Valve	G1170A		Yes	C.06.32
External Valve	G1162, G1163		Not Supported	N/A
External Contacts/ BCD board	G1351A		Yes	N/A
200 Barcode reader	G2256A		Not Supported	N/A

Agilent 1100/1200 LC: Enhanced Driver only (continued)

Module Type	Module Names	Communications	Supported in EZChrom Edition?	Supported Firmware Versions (minimum)
Wellplate Samplers, including micro and Thermostatted options	G1377A, B	(CAN Cable)	Yes	A.06.32
TCC	G1316A, B	(CAN Cable)	Yes	A.06.32
VW Detector	G1314A, B, C	(CAN Cable)	Yes	A.06.32
VW Detector	G1314D, E	(CAN Cable)	Yes, except RFID flow cell tag	B.06.32
MW Detector	G1365A, B	(CAN Cable)	Yes	A.06.32
MW Detector	G1365C, D	(CAN Cable)	Yes, except RFID flow cell tag	B.06.32
DA Detector	G1315A, B	(CAN Cable)	Yes	A.06.32
DA Detector	G1315C,D	(CAN Cable)	Yes, except RFID flow cell tag	B.06.32
Fluorescence Detector	G1321A	(CAN Cable)	Yes, 2D only, spectral options not controlled	A.06.32
RI Detector	G1362A	(CAN Cable)	Yes	A.06.32
ELSD Detector	G4218A	RS-232	Yes	V1.3, V1.4 (higher data rate)
ELSD 380 Detector	G4260A	RS-232	Yes	25.0
ELSD 385 Detector	G4261A	RS-232	Yes	25.0

Agilent A/D

Instrument	Supported Firmware Version (minimum)	Software Driver	Notes
Agilent 35900E	E.01.02		TCP/IP
Agilent SS420X	All versions		RS-232

Agilent 1220 LC System

Instrument/ Driver Type	Module Type	Module Names	Communications	Supported in EZChrom Edition?	Supported Firmware Versions (minimum)
RC.NET	1220 Isocratic 600 bar	G4286B	TCP/IP	Yes	B.06.32
RC.NET	1220 Isocratic 600 bar	G4287B	TCP/IP	Upgrade G4286B with Oven and ALS. Use Lab Advisor B.01.04 to get new module number.	B.06.32
RC.NET	1220 Gradient 600 bar	G4288B	TCP/IP	Yes	B.06.32
RC.NET	1220 Gradient 600 bar	G4289B	TCP/IP	Upgrade G4288B with Oven. Use Lab Advisor B.01.04 to get new module number.	B.06.32
RC.NET	1220 Gradient 600 bar	G4290B	TCP/IP	Yes	B.06.32
RC.NET	1220 Isocratic 600 bar	G4291B	TCP/IP	Upgrade 4286B with Oven. Use Lab Advisor B.01.04 to get new module number.	B.06.32
RC.NET	1220 Isocratic 600 bar	G4292B	TCP/IP	Upgrade G4286B with ALS. Use Lab Advisor B.01.04 to get new module number.	B.06.32
RC.NET	1220 Gradient 600 bar	G4293B	TCP/IP	Upgrade G4288B with ALS. Use Lab Advisor B.01.04 to get new module number.	B.06.32
RC.NET	1220 Isocratic 400 bar	G4288C	TCP/IP	Yes	B.06.32
RC.NET	1220 Isocratic 400 bar	G4289C	TCP/IP	Upgrade G4288C with ALS. Use Lab Advisor B.01.04 to get new module number.	B.06.32
RC.NET	1220 Isocratic 400 bar	G4290C	TCP/IP	Yes	B.06.32
RC.NET	1220 Isocratic 400 bar	G4293C	TCP/IP	Upgrade G4288C with ALS. Use Lab Advisor B.01.04 to get new module number.	B.06.32
RC.NET	RID	G1362A	(CAN Cable)	Yes	A.06.32
RC.NET	FLD	G1321A	(CAN Cable)	Yes	A.06.32
RC.NET	ELSD	G4218A	RS-232	Yes	V1.3, V1.4 (higher data rate)
RC.NET	ELSD 380 Detector	G4260A	RS-232	Yes	25.0
RC.NET	ELSD 385 Detector	G4261A	RS-232	Yes	25.0

You will be able to configure 1100\1200\1260\1290 modules along with the 1220 Compact instrument. However, please note that a number of hardware configurations are limited due to functionality incongruity. Please contact support before adding an 1100\1200\1260\1290 module to a 1220 Compact to ensure compatibility.

Agilent 1260 LC

Module Type	Module Names	Communications	Supported in EZChrom Edition?	Supported Firmware Versions (minimum)
System	1260 LC		Yes	N/A
Isocratic, Binary and Quaternary Pump, including Solvent Selection Valve	G1310B,G1311B, G1312A	(CAN Cable)	Yes	A.06.32
Binary Pump SL	G1312B	(CAN Cable)	Yes	A.06.32
Binary Pump VL	G1312C	(CAN Cable)	Yes	A.06.32
Quaternary Pump VL	G1311C	(CAN Cable)	Yes	A.06.32
Column compartment , including Column Selection Valve	G1316A	(CAN Cable)	Yes, except G1316A#56 microvalve control	A.06.32
ALS, including Thermostatted option	G1329A,1329B (G1329A and G1329B Thermostatted with Option G1330B)	(CAN Cable)	Yes, except #21 multi-draw kit	A.06.32
ALS - Infinity High Performance Auto Sampler (Well Plate Sampler)	G1367E (Thermostatted with Option G1330B)	(CAN Cable)	Yes	A.06.32
VW Detector	G1314B, G1314C	(CAN Cable)	Yes	A.06.32
VW Detector	G1314D	(CAN Cable)	Yes	B.06.32
VW Detector	G1314F	(CAN Cable)	Yes	B.06.32
DA Detector	G1315C, G1315D	(CAN Cable)	Yes	B.06.32
DA Detector	G4212B	(CAN Cable)	Yes	B.06.32
MW Detector	G1365C, G1365D	(CAN Cable)	Yes	B.06.32
RI Detector	G1362A	(CAN Cable)	Yes	A.06.32
FL Detector	G1321A, G1321B	(CAN Cable)	Yes	A.06.32
ELSD Detector	G4218A	RS-232	Yes	V1.3, V1.4 (high data rate)
ELSD 380 Detector	G4260A	RS-232	Yes	25.0
ELSD 385 Detector	G4261A	RS-232	Yes	25.0

Agilent 1290 LC

Module Type	Module Names	Communications	Supported in EZChrom Edition?	Supported Firmware Versions (minimum)
System	1290 LC	TCP/IP	Yes	N/A
Binary Pump , including Solvent Selection Valve	G4220A	(CAN Cable)	Yes	B.06.32
Binary Pump VL	G4220B	(CAN Cable)	Yes	B.06.32
Column Compartment, Including Column Selection Valve	G1316C	(CAN Cable)	Yes	A.06.32
Wellplate Autosampler	G4226A	(CAN Cable)	Yes	A.06.32
Flexible Cube	G4227A	(CAN Cable)	Yes	A.06.32
VW Detector	G1314E	(CAN Cable)	Yes	B.06.32
DA Detector	G4212A	(CAN Cable)	Yes	B.06.32
MW Detector	G1365C, G1365D	(CAN Cable)	Yes	B.06.32
RI Detector	G1362A	(CAN Cable)	Yes	A.06.32
FL Detector	G1321A , G1321B	(CAN Cable)	Yes	A.06.32
ELSD Detector	G4218A	RS-232	Yes	V1.3, V1.4 (higher data rate)
ELSD 380 Detector	G4260A	RS-232	Yes	25.0
ELSD 385 Detector	G4261A	RS-232	Yes	25.0

Alltech Associates LC Detectors

Module Type	Module Names	Communications	Supported in EZChrom Edition?	Supported Firmware Versions (minimum)
Detectors	ELSD-2000	RS-232C (A/D Converter also required)	Yes	
Detectors	CD-650	RS-232C (A/D Converter also required)	Yes	1.01.02

CTC Autosamplers (Agilent and CTC) with LC

Instrument	Model	Supported Firmware Versions (minimum)	Software Revision	Notes
LC – Agilent 1290 Infinity LC Injector HTS. Uses new xt platform.	G4277A	4.12 and higher		LAN
LC – Agilent 1290 Infinity LC Injector HTC. Uses new xt platform.	G4278A	4.12 and higher		LAN
LC - CTC Analytics HTC PAL Injection System	G4270-CTC	2.5.2		RS-232
LC - CTC Analytics HTS PAL Injection System	G4271-CTC	2.5.2		RS-232

Hitachi LaChrom LC (Supported On Windows XP and IE 8 or 9)

Module Type	Module Names	Communications	Supported in EZChrom Edition?	Supported Firmware Versions (minimum)
System	D-7000 Interface Module (IFM)	GPIB	Yes	N/A
A/D	D7000	(through IFM)	Yes	810-7014-00
Pump	L7100	(through IFM)	Yes	810-7810-00
Autosampler	L7200	(through IFM)	Yes	810-8300-04
Autosampler	L7250	(through IFM)	Yes	810-8350-05
Oven	L7300	(through IFM)	Yes	810-7760-03
Detector	L7400	(through IFM)	Yes	810-8200-04
Detector	L7420	(through IFM)	Yes	810-8250-02
Detector	L7450	GPIB	Yes	N/A
Detector	L7455	GPIB	Yes	810-4853-01
Detector	L7480	(through IFM)	Yes	810-8100-02
Detector	L7485	(through IFM)	Yes	810-7064-01

Hitachi LaChrom Elite LC (Supported on XP, Windows 7 32-bit, IE 8 or 9)

Module Type	Module Names	Communications	Supported in EZChrom Edition?	Supported Firmware Versions (minimum)
System	USB Interface Board (IFB)	USB	Yes	890-8190-01 or 891-8190-00
Pump	L-2100, L-2130	(through IFB)	Yes	890-8110-02
Autosampler	L-2200	(through IFB)	Yes	890-8121-00 or 890-8120-03
Oven	L-2300	(through IFB)	Yes	890-8130-02
Oven	L-2350	(through IFB)	Yes	890-8150-00
Detector	L-2400	(through IFB)	Yes	890-8140-02
Detector	L-2420	(through IFB)	Yes	890-8142-00
Detector	L2450	(through IFB)	Yes	890-8145-00
Detector	L-2455	(through IFB)	Yes	890-8146-00
Detector	L2480	(through IFB)	Yes	890-8148-00
Detector	L-2485	(through IFB)	Yes	890-8149-00
Detector	L-2490	(through IFB)	Yes	1.01
Detector	A/D	(through IFB)	Yes	890-8165-00

Hitachi LaChrom Ultra LC (Supported on XP, Windows 7 32-bit, IE 8 or 9)

Module Type	Module Names	Communications	Supported in EZChrom Edition?	Supported Firmware Versions (minimum)
System	USB Interface Board (IFB)	USB	Yes	891-8190-00
Pump	L-2160U	(through IFB)	Yes	891-8110-00
Autosampler	L-2200U	(through IFB)	Yes	891-8120-00 or 891-8128-00
Detector	L-2400U	(through IFB)	Yes	891-8140-00
Detector	L-2420U	(through IFB)	Yes	891-8142-00
Detector	L-2455U	(through IFB)	Yes	891-8145-00
Detector	L-2485U	(through IFB)	Yes	891-8148-00

Hitachi Chromaster LC (Supported on XP, Windows 7 32-bit, IE 8 or)

Module Type	Module Names	Communications	Supported in EZChrom Edition?	Supported Firmware Versions (minimum)
System	Interface Control Board (ICB)	USB	Yes	892-8190-02 or later
Pump	Chromaster 5110	(through ICB)	Yes	892-8110-02 or later
Autosampler	Chromaster 5210	(through ICB)	Yes	892-8120-01 or later
Oven	Chromaster 5310	(through ICB)	Yes	892-8130-00 or later
Detector	Chromaster 5410 UV	(through ICB)	Yes	892-8140-00 or later
Detector	Chromaster 5420 UV-VIS	(through ICB)	Yes	892-8142-00 or later
Detector	Chromaster 5430 Diode Array	(through ICB)	Yes	892-8145-01 or later
Detector	Chromaster 5440 FL	(through ICB)	Yes	892-8148-00 or later
Detector	Chromaster 5450 RI	(through ICB)	Yes	2.00 or later
Detector	Analog Input Device	(through ICB)	Yes	892-8165-00 or later

Jasco 1500/2000 LC (Supported on Windows XP Only)

Module Type	Module Names	Communications	Supported in EZChrom Edition?	Supported Firmware Versions (minimum)
(System)	LC-Net II / ADC	TCP/IP	Yes, XP Only	4.32
Pumps	PU-1580	(Through LC-Net II)	Yes, XP Only	2.24
Pumps	PU-1580i	(Through LC-Net II)	Yes, XP Only	2.15
Pumps	PU-1580-CO2	(Through LC-Net II)	Yes, XP Only	2.25
Pumps	PU-1585	(Through LC-Net II)	Yes, XP Only	2.17
Pumps	PU-1586	(Through LC-Net II)	Yes, XP Only	2.24
Pumps	PU-1587	(Through LC-Net II)	Yes, XP Only	2.15
Pumps	PU-2080, PU-2080i	(Through LC-Net II)	Yes, XP Only	6.2
Pumps	PU-2080-CO2	(Through LC-Net II)	Yes, XP Only	6.41
Pumps	PU-2080-100MPa	(Through LC-Net II)	Yes, XP Only	6.35
Pumps	PU-2085	(Through LC-Net II)	Yes, XP Only	6.2
Pumps	PU-2085-100MPa	(Through LC-Net II)	Yes, XP Only	6.36
Pumps	PU-2085i	(Through LC-Net II)	Yes, XP Only	6.25
Pumps	PU-2086,PU-2086-CO2	(Through LC-Net II)	Yes, XP Only	6.2
Pumps	PU-2086i	(Through LC-Net II)	Yes, XP Only	6.22
Pumps	PU-2087	(Through LC-Net II)	Yes, XP Only	6.2
Pumps	PU-2087i	(Through LC-Net II)	Yes, XP Only	6.33
Pumps	PU-2088,PU-2088-CO2	(Through LC-Net II)	Yes, XP Only	6.14

Jasco 1500/2000 LC (continued)

Module Type	Module Names	Communications	Supported in EZChrom Edition?	Supported Firmware Versions (minimum)
Pumps	PU-2089, PU-2089i	(Through LC-Net II)	Yes, XP Only	6.2
Autosamplers	AS-1550, AS-1555, AS-1555-10	(Through LC-Net II)	Yes, XP Only	1.48
Autosamplers	AS-1559	(Through LC-Net II)	Yes, XP Only	1.47
Autosamplers	AS-2050, AS-2050i, AS-2051, AS-2051i, AS-2055, AS-2055i, AS-2057, AS-2057i	(Through LC-Net II)	Yes, XP Only	6.27
Autosamplers	AS-2059	(Through LC-Net II)	Yes, XP Only	6.33
Autosamplers	AS-2059SF	(Through LC-Net II)	Yes, XP Only	6.37
Ovens	CO-2060, CO-2065, CO-2067	(Through LC-Net II)	Yes, XP Only	6.24
Ovens	CO-1560	(Through LC-Net II)	Yes, XP Only	(Ver. A-C) 1.13 (Ver. D) 5.11
Ovens	CO-1565	(Through LC-Net II)	Yes, XP Only	(Ver. A) 1.12 (Ver. B) 5.02 (Ver. C) 5.04
Valves	HV-2080-01, HV-1592-01	(Through LC-Net II)	Yes, XP Only	N/A
Valves	LV-2080-03, LV-1580-03	(Through LC-Net II)	Yes, XP Only	N/A
Gradient Units	LG-2080-02/04, LG-1580-02/04	(Through LC-Net II)	Yes, XP Only	N/A
Detectors	UV-2070, UV-2075	(Through LC-Net II)	Yes, XP Only	6.3
Detectors	UV-1570, UV-1575	(Through LC-Net II)	Yes, XP Only	1.18
Detectors	CD-2095	(Through LC-Net II)	Yes, XP Only	6.23
Detectors	CD-1595	(Through LC-Net II)	Yes, XP Only	3.08
Detectors	FP-2025, FP-2020	(Through LC-Net II)	Yes, XP Only	6.21
Detectors	FP-1520, FP-1520s	(Through LC-Net II)	Yes, XP Only	1.41
Detectors	MD-2010, MD-2015, MD-1510, MD-1515	SCSI*	Yes, XP Only	2.24

Jasco X-LC (Supported on Windows XP Only)

Module Type	Module Names	Communications	Supported in EZChrom Edition?	Supported Firmware Versions (minimum)
Pumps	3080 PU, 3085 PU	(Through LC-Net II)	Yes, XP Only	6.39
Ovens	X-LC 3067CO	(Through LC-Net II)	Yes, XP Only	6.25
Autosamplers	X-LC 3059AS	(Through LC-Net II)	Yes, XP Only	6.37
Detectors	X-LC 3070UV	(Through LC-Net II)	Yes, XP Only	6.34
Detectors	X-LC 3095CD	(Through LC-Net II)	Yes, XP Only	6.25
Detectors	X-LC 3020FP	(Through LC-Net II)	Yes, XP Only	6.25

PerkinElmer Nelson Interfaces

Module Type	Module Names	Communications	Supported in EZChrom Edition?	Supported Firmware Versions (minimum)
A/D	940, 941A	RS-232	Yes	2.3
A/D	760	GPIOB	Yes	N/A
A/D	950/950A	RS-232 or GPIOB	Yes	2.7
	960/960A 970/970A	RS-232 or GPIOB	Yes	2.4
	NCI 901/902	RS-232 or GPIOB	Yes	3.4

PerkinElmer Series 200LC

Module Type	Module Names	Communications	Supported in EZChrom Edition?	Supported Firmware Versions (minimum)
Autosampler	Series 200, ISS-200 Autosampler	RS-232	Yes	1.08
Pump	Series 200 pump	RS-232	Yes	2.43
Detectors	Series 200 UV detector	RS-232	Yes	1.0

PerkinElmer Autosystem XL

Module Type	Module Names	Communications	Supported in EZChrom Edition?	Supported Firmware Versions (minimum)
GC	Autosystem XL	RS-232	Yes	3.660
Inlets	Capillary, Programmable On-Column - Inlet Pgm Mode, Programmable On-Column - Oven Track Mode, Programmable Split/Splitless - Inlet Pgm Mode, Programmable Split/Splitless - Oven Track Mode	(Through GC)	Yes	N/A
Detectors	FID, ECD, TCD, PID	(Through GC)	Yes	N/A
Autosampler	(Built-in)	(Through GC)	Yes	3.70
Other	PPC	(Through GC)	Yes	2.24

Valco Valves

Module Type	Module Names	Communications	Supported in EZChrom Edition?	Supported Firmware Versions (minimum)
Valve	EMHCA-CE, EMTCA-CE, EMHA-CE	RS-232	Yes	N/A

Varian CP-3800

Module Type	Module Names	Communications	Supported in EZChrom Edition?	Supported Firmware Versions (minimum)
GC	CP3800	TCP/IP (BNC type)	Yes	3.3.5D
Detector	FID, ECD, TCD, TSD, uTCD, PFPD	(Through GC)	Yes	N/A
Autosampler	CP8200, CP8400, CP8410	(Through GC)	Yes	N/A

Varian 3900-GC

Module Type	Module Names	Communications	Supported in EZChrom Edition?	Supported Firmware Versions (minimum)
GC	Integrated GC	TCP/IP	Yes	6.18
Inlets	Split/Splitless, On Column	(Through GC)	Yes	N/A
Detectors	FID, TCD	(Through GC)	Yes	N/A
Autosamplers	CP8200, CP8400, CP8410	(Through GC)	Yes	N/A

Varian MicroGC

Module Names	Communications	Supported in EZChrom Edition?	Supported Firmware Versions (minimum)
CP2002(P), CP2003(P)	RS-232	Yes	1.1, 1.2
CP2003 Quad	2 RS-232 ports	Yes	1.22

Waters Alliance

Instrument/Driver Type	Module Type	Module Names	Communications	Supported in EZChrom Edition?	Supported Firmware Versions (minimum)
Integrated LC	2690 Separations Module	GPIB	Yes	1.20 or later	
	Integrated LC	2695 Separations Module	GPIB	Yes	2.0.3 or later
	Detectors	2487 Dual Wavelength Absorbance Detector	GPIB	Yes	1.01 or later
	Detectors	996 PDA	GPIB	Yes	2.3 or later
	Detectors	2996 PDA	GPIB	Yes	3.2 or later

EZChrom Compact Edition Firmware Support Information:

Compact Edition Compatibility with GC Hardware

Instrument	Model	Supported Firmware Version (minimum)	Software Driver	Notes
7820A	G4350A	A.01.12.002	78xx-4.02	No Software Add-on Support
6820	G1176A G1180A	A.01.03		Inlets: S/S, PP Detectors: FID, TCD, μ ECD, NPD
490 Micro GC	G3581A	1.40 build 45	1.9.0.0	TCP-IP
CP-4900 Micro-GC		1.40 build 45	1.9.0.0	TCP-IP
490-GC Micro-GC		1.40 build 45	1.9.0.0	TCP-IP

Agilent 1120 Compact LC

Instrument/ Driver Type	Module Type	Module Names	Communications	Supported in EZChrom Edition?	Supported Firmware Versions (minimum)
RC.NET	1120 Isocratic	G4286A	TCP/IP	Yes	B.06.26
RC.NET	1120 Isocratic	G4287A	TCP/IP	Yes	B.06.26
RC.NET	1120 Gradient	G4288A	TCP/IP	Yes	B.06.26
RC.NET	1120 Gradient	G4289A	TCP/IP	Yes	B.06.26
RC.NET	1120 Gradient	G4290A	TCP/IP	Yes	B.06.26
RC.NET	1100/1200 RID	G1362A	(CAN Cable)	Yes	A.06.32
RC.NET	1100/1200 FLD	G1321A	(CAN Cable)	Yes	A.06.32
RC.NET	1100/1200 ELSD	G4218A	RS-232	Yes	V1.3, V1.4 (higher data rate)
RC.NET	ELSD 380 Detector	G4260A	RS-232	Yes	25.0
RC.NET	ELSD 385 Detector	G4261A	RS-232	Yes	25.0

Agilent 1220 LC System

Instrument/ Driver Type	Module Type	Module Names	Communications	Supported in EZChrom Edition?	Supported Firmware Versions (minimum)
RC.NET	1220 Isocratic 600 bar	G4286B	TCP/IP	Yes	B.06.32
RC.NET	1220 Isocratic 600 bar	G4287B	TCP/IP	Upgrade G4286B with Oven and ALS. Use Lab Advisor B.01.04 to get new module number.	B.06.32
RC.NET	1220 Gradient 600 bar	G4288B	TCP/IP	Yes	B.06.32
RC.NET	1220 Gradient 600 bar	G4289B	TCP/IP	Upgrade G4288B with Oven. Use Lab Advisor B.01.04 to get new module number.	B.06.32
RC.NET	1220 Gradient 600 bar	G4290B	TCP/IP	Yes	B.06.32
RC.NET	1220 Isocratic 600 bar	G4291B	TCP/IP	Upgrade 4286B with Oven. Use Lab Advisor B.01.04 to get new module number.	B.06.32
RC.NET	1220 Isocratic 600 bar	G4292B	TCP/IP	Upgrade G4286B with ALS. Use Lab Advisor B.01.04 to get new module number.	B.06.32
RC.NET	1220 Gradient 600 bar	G4293B	TCP/IP	Upgrade G4288B with ALS. Use Lab Advisor B.01.04 to get new module number.	B.06.32
RC.NET	1220 Isocratic 400 bar	G4288C	TCP/IP	Yes	B.06.32
RC.NET	1220 Isocratic 400 bar	G4289C	TCP/IP	Upgrade G4288C with ALS. Use Lab Advisor B.01.04 to get new module number.	B.06.32
RC.NET	1220 Isocratic 400 bar	G4290C	TCP/IP	Yes	B.06.32
RC.NET	1220 Isocratic 400 bar	G4293C	TCP/IP	Upgrade G4288C with ALS. Use Lab Advisor B.01.04 to get new module number.	B.06.32
RC.NET	RID	G1362A	(CAN Cable)	Yes	A.06.32
RC.NET	FLD	G1321A	(CAN Cable)	Yes	A.06.32
RC.NET	ELSD	G4218A	RS-232	Yes	V1.3, V1.4 (higher data rate)
RC.NET	ELSD 380 Detector	G4260A	RS-232	Yes	25.0
RC.NET	ELSD 385 Detector	G4261A	RS-232	Yes	25.0

You will be able to configure 1100\1200\1260\1290 modules along with the 1220 Compact instrument. However, please note that a number of hardware configurations are limited due to functionality incongruity. Please contact support before adding an 1100\1200\1260\1290 module to a 1220 Compact to ensure compatibility.

EZChrom Value Line Edition Firmware Support Information:

Value Line Compatibility with GC Hardware

Instrument	Model	Supported Firmware Version (minimum)	Software Driver	Notes
7820A	G4350A	A.01.12.002	78xx-4.02	No Software Add-on Support
490 Micro GC	G3581A	1.40 build 45	1.9.0.0	TCP-IP
CP-4900 Micro-GC		1.40 build 45	1.9.0.0	TCP-IP

Agilent 1120 Compact LC

Instrument/ Driver Type	Module Type	Module Names	Communications	Supported in EZChrom Edition?	Supported Firmware Versions (minimum)
RC.NET	1120 Isocratic	G4286A	TCP/IP	Yes	B.06.26
RC.NET	1120 Isocratic	G4287A	TCP/IP	Yes	B.06.26
RC.NET	1120 Gradient	G4288A	TCP/IP	Yes	B.06.26
RC.NET	1120 Gradient	G4289A	TCP/IP	Yes	B.06.26
RC.NET	1120 Gradient	G4290A	TCP/IP	Yes	B.06.26
RC.NET	1100/1200 RID	G1362A	(CAN Cable)	Yes	A.06.32
RC.NET	1100/1200 FLD	G1321A	(CAN Cable)	Yes	A.06.32
RC.NET	1100/1200 ELSD	G4218A	RS-232	Yes	V1.3, V1.4 (higher data rate)
RC.NET	ELSD 380 Detector	G4260A	RS-232	Yes	25.0
RC.NET	ELSD 385 Detector	G4261A	RS-232	Yes	25.0

Agilent 1220 LC System

Instrument/ Driver Type	Module Type	Module Names	Communications	Supported in EZChrom Edition?	Supported Firmware Versions (minimum)
RC.NET	1220 Isocratic 600 bar	G4286B	TCP/IP	Yes	B.06.32
RC.NET	1220 Isocratic 600 bar	G4287B	TCP/IP	Upgrade G4286B with Oven and ALS. Use Lab Advisor B.01.04 to get new module number.	B.06.32
RC.NET	1220 Gradient 600 bar	G4288B	TCP/IP	Yes	B.06.32
RC.NET	1220 Gradient 600 bar	G4289B	TCP/IP	Upgrade G4288B with Oven. Use Lab Advisor B.01.04 to get new module number.	B.06.32
RC.NET	1220 Gradient 600 bar	G4290B	TCP/IP	Yes	B.06.32
RC.NET	1220 Isocratic 600 bar	G4291B	TCP/IP	Upgrade 4286B with Oven. Use Lab Advisor B.01.04 to get new module number.	B.06.32
RC.NET	1220 Isocratic 600 bar	G4292B	TCP/IP	Upgrade G4286B with ALS. Use Lab Advisor B.01.04 to get new module number.	B.06.32
RC.NET	1220 Gradient 600 bar	G4293B	TCP/IP	Upgrade G4288B with ALS. Use Lab Advisor B.01.04 to get new module number.	B.06.32
RC.NET	1220 Isocratic 400 bar	G4288C	TCP/IP	Yes	B.06.32
RC.NET	1220 Isocratic 400 bar	G4289C	TCP/IP	Upgrade G4288C with ALS. Use Lab Advisor B.01.04 to get new module number.	B.06.32
RC.NET	1220 Isocratic 400 bar	G4290C	TCP/IP	Yes	B.06.32
RC.NET	1220 Isocratic 400 bar	G4293C	TCP/IP	Upgrade G4288C with ALS. Use Lab Advisor B.01.04 to get new module number.	B.06.32
RC.NET	RID	G1362A	(CAN Cable)	Yes	A.06.32
RC.NET	FLD	G1321A	(CAN Cable)	Yes	A.06.32
RC.NET	ELSD	G4218A	RS-232	Yes	V1.3, V1.4(higher data rate)
RC.NET	ELSD 380 Detector	G4260A	RS-232	Yes	25.0
RC.NET	ELSD 385 Detector	G4261A	RS-232	Yes	25.0

ChemStation Edition Firmware Support Information:

NOTE

On Agilent Instrument Controllers (AICs), OpenLAB CDS ChemStation Edition only supports instruments and modules connected exclusively via LAN. (GPIB, RS232, USB or any converter are not supported on AICs.)

OpenLAB CDS ChemStation Edition offers for LC instrumentation provides two different driver versions: Classic LC Drivers (Figure 1) and RC.Net Drivers (Figure 2).

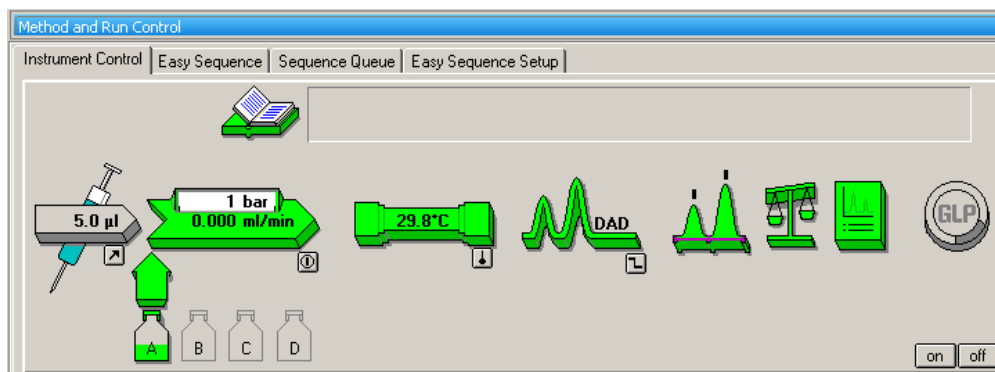


Figure 1 Classic LC Driver



Figure 2 LC RC.NET Driver

LC Instrument Related Note:

Please note that RC.NET drivers and Classic Drivers for the LC/CE modules cannot be run in the same ChemStation instrument. Combinations of modules in one instrument stack need to have one common driver class.

Classic Plus drivers are working in combination with both driver classes (RC.NET or Classic).

Agilent LC Modules: 11XX and 12XX

Type	Product Number	Module Name						Min. Firmware Revision	Supported Driver Type:	
			1100	1200	1260 Infinity	1290 Infinity	Classic		RC.Net	
Sampler	G1313A	Standard Autosampler	x					A.06.32	x	x
Sampler	G1329A	Standard Autosampler	x	x	x			A.06.32	x	x
Sampler	G1329B	Standard Autosampler		x	x			A.06.32	x	x
Sampler	G2254A	Automation Interface	x	x	x			A.06.32	x	
Sampler	G1367A	Well-Plate Sampler	x					A.06.32	x	x
Sampler	G1367B	High Perf. Autosampler		x				A.06.32	x	x
Sampler	G1367C	High Perf. Autosampler SL		x				A.06.32	x	x
Sampler	G1367D	High Performance Autosampler SL+		x				A.06.32	x	x
Sampler	G1367E	High Performance Autosampler			x			A.06.32		x
Sampler	G2260A	Preparative Autosampler	x	x	x			A.06.32	x	
Sampler	G2258A	Dual-Loop Autosampler	x	x	x			A.06.32	x	
Sampler	G1377A	Micro High Performance Autosampler	x	x	x			A.06.32	x	
Sampler	G1373A	Injector Purge Kit (comment: includes the G1156A valve)		x	x			A.06.32	x	x
Sampler	G4226A	Autosampler					x	A.06.32		x
Sampler	G5667A	Bio-inert High Performance Autosampler			x			A.06.32		x
Fraction Collector	G1364A	Fraction Collector	x					A.06.32	x	
Fraction Collector	G1364B	Fraction Collector (PS)	x	x	x			A.06.32	x	
Fraction Collector	G1364C	Fraction Collector (AS)	x	x	x			A.06.32	x	
Fraction Collector	G1364D	Fraction Collector (μS)	x	x	x			A.06.32	x	
Pumps	G1310A	Isocratic Pump	x	x				A.06.32	x	x
Pumps	G1310B	Isocratic Pump			x			A.06.32		x
Pumps	G1311A	Quaternary Pump	x	x				A.06.32	x	x
Pumps	G1311B	Quaternary Pump			x			A.06.32		x
Pumps	G1311C	Quaternary Pump VL			x			A.06.32		x
Pumps	G1312A	Binary Pump	x	x	x			A.06.32	x	x
Pumps	G1312B	Binary Pump		x	x			A.06.32	x	x
Pumps	G1312C	Binary Pump VL			x			A.06.32		x
Pumps	G1376A	Capillary Pump	x	x	x			A.06.32	x	

Agilent LC Modules: 11XX and 12XX (continued)

Type	Product Number	Module Name						Min. Firmware Revision	Supported Driver Type:	
			1100	1200	1260	Infinity	1290		Infinity	Classic
Pumps	G1361A	Preparative Pump	x	x	x			A.06.32	x	
Pumps	G2225A	Nanoflow Pump	x	x	x			A.06.32	x	
Pumps	G4204A	1290 Quat Pump					X	A.06.50		x
Pumps	G4220A	Binary Pump					x	B.06.32		x
Pumps	G4220B	Binary Pump VL					x	B.06.32		x
Pumps	G5611A	Bio - Quaternary Pump				x		A.06.32		x
Detectors	G1314A	Variable Wavelength Detector	x					A.06.32	x	x
Detectors	G1314B	Variable Wavelength Detector VL	x	x	x			A.06.32	x	x
Detectors	G1314C	Variable Wavelength Detector VL Plus		x	x			A.06.32	x	x
Detectors	G1314D	Variable Wavelength Detector		x	x			B.06.32	x	x
Detectors	G1314E	Variable Wavelength Detector		x			x	B.06.32	x	x
Detectors	G1314F	Variable Wavelength Detector				x		B.06.32		x
Detectors	G1315A	Diode Array Detector	x					A.06.32	x	x
Detectors	G1315B	Diode Array Detector	x	x				A.06.32	x	x
Detectors	G1315C	Diode Array Detector VL+	x	x	x			B.06.32	x	x
Detectors	G1315D	Diode Array Detector VL	x	x	x			B.06.32	x	x
Detectors	G1365A	Multiple Wavelength Detector	x					A.06.32	x	x
Detectors	G1365B	Multiple Wavelength Detector	x	x				A.06.32	x	x
Detectors	G1365C	Multiple Wavelength Detector		x	x			B.06.32	x	x
Detectors	G1365D	Multiple Wavelength Detector VL		x	x			B.06.32	x	x
Detectors	G1321A	Fluorescence Detector	x	x				A.06.32	x	x
Detectors	G1321B	Fluorescence Detector				x		A.06.32		x
Detectors	G1362A	Refractive Index Detector	x	x	x			A.06.32	x	x
Detectors	G4218A *	Evap. Light-scattering Detector		x	x			FW V.1.3 FW V.1.4	Classic Plus (English Driver only)	
Detectors	G4260A *	ELSD 380 Detector	x	x	x	x		25.0		x
Detectors	G4261A *	ELSD 385 Detector	x	x	x	x		25.0		x
Detectors	G4212A	Diode Array Detector					x	B.06.32		x
Detectors	G4212B	Diode Array Detector				x		B.06.32		x

*RS-232 Communications

Agilent LC Modules: 11XX and 12XX (continued)

Type	Product Number	Module Name						Min. Firmware Revision	Supported Driver Type:	
			1100	1200	1260 Infinity	1290 Infinity	Classic		RC.Net	
Detectors	G1314B	Variable Wavelength Detector VL	x	x	x		A.06.32	x	x	
Detectors	G1314C	Variable Wavelength Detector VL Plus		x	x		A.06.32	x	x	
Detectors	G1314D	Variable Wavelength Detector		x	x		B.06.32	x	x	
Detectors	G1314E	Variable Wavelength Detector		x		x	B.06.32	x	x	
Detectors	G1314F	Variable Wavelength Detector			x		B.06.32		x	
Detectors	G1315A	Diode Array Detector	x				A.06.32	x	x	
Detectors	G1315B	Diode Array Detector	x	x			A.06.32	x	x	
Compartments	G1316A	Thermostatted Column Compartment	x	x	x		A.06.32	x	x	
Compartments	G1316B	Thermostatted Column Compartment SL		x			A.06.32	x	x	
Compartments	G1316C	Thermostatted Column Compartment		x		x	A.06.32	x	x	
Compartments	G4240A	Chip Cube MS Interface		x	x		A.06.32	x	x (English Driver Only)	
Cluster Driver	TCC Cluster	TCC Cluster			x	x	A.06.32	x	x	
Cluster Driver	Pump Valve Cluster	Pump Valve Cluster			x	x	A.06.32	x	x	
Valves	G1156A	6Pos/7Port Valve (internal)		x			A.06.32	x	x	
Valves	G1157A	2Pos/10Port Valve		x			A.06.32	x	x	
Valves	G1163A	2Pos/10Port Valve (micro)		x			A.06.32	x	x	
Valves	G1158A	2Pos/6Port Valve (Standard) 400 bar		x			A.06.32	x	x	
Valves	G1158B	2-Position/6-Port Valve		x			A.06.32	x	x	
Valves	G1162A	2Pos/6Port Valve (Micro)		x			A.06.32	x	x	
Valves	G1159A	6-Pos Column Selector Valve		x			A.06.32	x	x	
Valves	G1160A	12-Position Selector Valve		x			A.06.32	x	x	
Valves	G1170A	External Valve			x	x	C.06.32			

High Throughput

Product Number	Module Name						Min. Firmware Revision	Supported Driver Type:	
		1100	1200	1260	Infinity	1290		Infinity	Classic
G2254A	Automation Interface	x	x	x			Hosting module to have FW A.06.32		
G2257A	Sample Capacity Extensions	x	x	x			A.06.32	x	
G4277A	LC – Agilent 1290 Infinity LC Injector HTS. Uses new xt platform.					x	4.12 and higher		x
G4278A	LC – Agilent 1290 Infinity LC Injector HTC. Uses new xt platform.					x	4.12 and higher		x
G4270-CTC	LC - CTC Analytics HTC PAL Injection System						2.5.2		x
G4271-CTC	LC - CTC Analytics HTS PAL Injection System						2.5.2		x
G6501B	GC - Agilent GC Sampler 80 for Liquid Injection (SPME, Headspace Optional)						4.1.3 or 4.1.4		x
G6502B	GC - Agilent GC Injector 80 for Liquid Injection (SPME Optional)						4.1.3 or 4.1.4		x
G6509B	GC - Agilent GC Sampler 120 for Liquid Injection (SPME, Headspace Optional)						4.1.3 or 4.1.4		x
G6500-CTC	GC - CTC Combi-Pal for Liquid and Headspace Injection (SPME Optional)						2.5.2, 2.6.8 or 4.1.3, 4.1.4		x
G6501-CTC	GC - CTC Combi-Pal for Liquid Injection (SPME, Headspace Optional)						2.5.2, 2.6.8 or 4.1.3, 4.1.4		x
G6509-CTC	GC - CTC Combi-Pal for Liquid Injection (SPME, Headspace Optional)						2.5.2, 2.6.8 or 4.1.3, 4.1.4		x
G6502-CTC	GC - CTC GC-Pal for Liquid Injection (SPME Optional)						2.5.2, 2.6.8 or 4.1.3, 4.1.4		x
G4227A	Flexible Cube				x		A.06.50		x Standalone
G4301A	Aurora SFC Fusion A5 Module						Aurora A.05.02.01		x (English Driver only)
G4302A	SFC Binary Pump				x		A.06.32		x (English Driver only)

High Throughput (continued)

Product Number	Module Name						Min. Firmware Revision	Supported Driver Type:	
		1100	1200	1260 Infinity	1290 Infinity	Classic		RC.Net	
G4303A	SFC Autosampler			x			A.06.32		x (English Driver only)
35900E	Dual Channel A/D Interface Box						E.01.02		Classic Plus
G1323B	Handheld Controller	x	x				B.04.02		No driver required
G4208A	Series Instant Pilot		x				B.02.11		No driver required
G1390A	Universal Interface Box						A.06.32		No driver required
G1390B	Universal Interface Box II						B.06.60		
G1322A	Standard Degasser			x			n/a		No driver required
G1379B	Micro Degasser			x			n/a		No driver required
G1351A	External Contacts Board		x				n/a		No driver required
G1330B	Thermostat	x	x			x	n/a		No driver required
G2256A	Bar Code Reader	x	x	x			n/a		No driver required

Other

Product Number	Module Name						Min. Firmware Revision	Supported Driver Type:	
		1100	1200	1260 Infinity	1290 Infinity	Classic		RC.Net	
G4227A	Flexible Cube			x			A.06.32		x as option to Hip-Samplers
G4302A	SFC Binary Pump			x			A.06.32		X (English only)
G4303	ASFC Autosampler		x				A.06.32		X (English only)
35900E	Dual Channel A/D Interface Box						E.01.02		Classic Plus
G1323B	Handheld Controller	x	x				B.04.02		No driver required
G4208A	Series Instant Pilot		x				B.02.11		No driver required
G1390A	Universal Interface Box						A.06.32		No driver required
G1322A	Standard Degasser			x			n/a		No driver required
G1379B	Micro Degasser			x			n/a		No driver required
G1351A	External Contacts Board		x				n/a		No driver required
G1330B	Thermostat	x	x			x	n/a		No driver required
G2256A	Bar Code Reader	x	x	x			n/a		No driver required

Agilent Integrated Systems

Module Names	Module Type	Supported Firmware	Communications
G4286A	1120 Compact LC	B.06.32	RC.NET
G4287A	1120 Compact LC	B.06.32	RC.NET
G4288A	1120 Compact LC	B.06.32	RC.NET
G4289A	1120 Compact LC	B.06.32	RC.NET
G4290A	1120 Compact LC	B.06.32	RC.NET
G4285B	1120 Compact LC	B.06.50	RC.NET
G4286B	1220 Infinity LC System	B.06.32	RC.NET
G4287B	1220 Infinity LC System	B.06.32	RC.NET
G4288B	1220 Infinity LC System	B.06.32	RC.NET
G4289B	1220 Infinity LC System	B.06.32	RC.NET
G4290B	1220 Infinity LC System	B.06.32	RC.NET
G4291B	1220 Infinity LC System	B.06.32	RC.NET
G4292B	1220 Infinity LC System	B.06.32	RC.NET
G4293B	1220 Infinity LC System	B.06.32	RC.NET
G4288C	1220 Infinity LC System VL	B.06.32	RC.NET
G4289C	1220 Infinity LC System VL	B.06.32	RC.NET
G4290C	1220 Infinity LC System VL	B.06.32	RC.NET
G4293C	1220 Infinity LC System VL	B.06.32	RC.NET

Agilent Prep LC Driver (Varian)

Module Names	Module Type	Supported Firmware	Communications
Agilent 210	Pump	1.73 rev C	RC.NET
Agilent 218	Pump	1.1 rev B	RC.NET
Agilent SD1	Pump	2.2	RC.NET
Agilent 325 UV/VIS	Detector	2.06	RC.NET
Agilent 410	Autosampler	2.07	RC.NET
Agilent 440	Fraction Collector	1.31	RC.NET

Note

Pumps, Autosampler and Fraction Collector are connected using the Rs232 connections.

The 325 Detector is connected using a LAN cable

Agilent Capillary Electrophoresis Driver

Module Names	Module Type	Supported Firmware	Communications
G7150A	G7100 Capillary Electrophoreses II	B.06.25	RC.NET
G7151A	Diode Array Detector for CE II	B.06.24	RC.NET
G1600A	Capillary Electrophoresis I (Mainframe)	2.3	Not Supported

Compatibility with GC Hardware

Instrument	Model	Supported Firmware Version (minimum)	Software Driver	Notes
7890A	G3440A G3442A G3443A	A.01.14	78xx-4.02	
7820A	G4350A	A.01.12.002	78xx-4.02	RTL, CFT, method transfer, and Easy SamplePrep are not supported
6890N	G1530N G1540N	N.06.07	68xx-6.11	N.06.07 needed for 7693A support
6890A 6890Plus	G1530A G1540A	A.03.08	68xx-6.11	
6850 Serial # >= US10243001	G2630A	A.06.02	68xx-6.11	A.06.02 needed for 7693 A support
6850 Serial # <= US00003200	G2630A	A.03.07	68xx-6.11	A.03.07 needed for 7693A support
6850 Handheld Controller	G2629A	A.05.06		For 7683A\B
490 Micro GC	G3581A	1.40 build 45	1.9.0.0	

ALS Summary (auto injector, tray and associated controller)

7650 GC ALS hardware:

Instrument	Model	Supported Firmware Version (minimum)	Software Driver	Notes
Injector	G4567A	A.10.00	78xx-4.02	

7693 ALS hardware

Instrument	Model	Supported Firmware Version (minimum)	Software Driver	Notes
7693 Injector	G4513A	A.10.06	68xx-6.11 78xx-4.02	
7693 Tray	G4514A	A.10.16	68xx-6.11 78xx-4.02	
BCR/Mixer	G4515A	A.10.04	68xx-6.11 78xx-4.02	
External Controller	G4516A	A.01.04	68xx-6.11	
6890Plus ALS card upgrade	G4517A	A.01.04	68xx-6.11	
LVI Syringe Carriage	G4521A	n/a	68xx-6.11 78xx-4.02	
Cooling Accessory	G4522A	n/a	68xx-6.11 78xx-4.02	
Tray with BCR/Mixer	G4520A	A.10.16	68xx-6.11 78xx-4.02	

7683B ALS hardware

Instrument	Model	Supported Firmware Version (minimum)	Software Driver	Notes
7683B Injector	G2913A	A.11.03	68xx-6.11 78xx-4.02	
7683B Tray	G2614A	A.02.01	68xx-6.11 78xx-4.02	
BCR/Mixer	G2615A	n/a	68xx-6.11 78xx-4.02	

ALS Summary (auto injector, tray and associated controller)

7683A ALS hardware

Instrument	Model	Supported Firmware Version (minimum)	Software Driver	Notes
7683A Injector	G2613A	A.11.03	68xx-6.11 78xx-4.02	
7683A Tray	G2614A	A.02.01	68xx-6.11 78xx-4.02	
BCR/Mixer	G2615A	n/a	68xx-6.11 78xx-4.02	

Headspace support with GC

Instrument	Model	Supported Firmware Version (minimum)	Software Revision	Notes
7697A Headspace	7697A	A.01.04	G7318AA B.01.03	68xx-6.11 78xx-4.02 GC RC.NET Driver Support Only
G1888 Headspace	G1888	A.01.10	G2924AA B.01.03	68xx-6.11 78xx-4.02 GC RC.NET Driver Support Only
Headspace	G1289B/ G1290B (7694B)	1.05	G2924AA B.01.03	Out of Support
Headspace	G1883A (7694E)	1.12	--	Not Supported

Control of PAL Auto sampler with GC

Instrument	Model	Supported Firmware Version (minimum)	Software Revision	Notes
CTC Combi-Pal for Liquid and Headspace Injection (SPME Optional)	G6500-CTC	Agilent 2.6.8 or 4.1.5	G3382AA B.01.03	68xx-6.11 78xx-4.02 GC RC.NET Driver Support Only
CTC Combi-Pal 80 cm for Liquid Injection (SPME, Headspace Optional)	G6501-CTC	Agilent 2.6.8 or 4.1.5	G3382AA B.01.03	68xx-6.11 78xx-4.02 GC RC.NET Driver Support Only
CTC Combi-Pal 120 cm for Liquid Injection (SPME, Headspace Optional)	G6509-CTC	Agilent 2.6.8 or 4.1.5	G3382AA B.01.03	68xx-6.11 78xx-4.02 GC RC.NET Driver Support Only
CTC GC-Pal for Liquid Injection (SPME Optional)	G6502-CTC	Agilent 2.6.8 or 4.1.5	G3382AA B.01.03	68xx-6.11 78xx-4.02 GC RC.NET Driver Support Only
Agilent GC Sampler 80 cm for Liquid Injection (SPME, Headspace Optional)	G6501B	Agilent 4.1.5	G3382AA B.01.03	68xx-6.11 78xx-4.02 GC RC.NET Driver Support Only
Agilent GC Injector 80 cm for Liquid Injection (SPME Optional)	G6502B	Agilent 4.1.5	G3382AA B.01.03	68xx-6.11 78xx-4.02 GC RC.NET Driver Support Only
Agilent GC Sampler 120 cm for Liquid Injection (SPME, Headspace Optional)	G6509B	Agilent 4.1.5	G3382AA B.01.03	68xx-6.11 78xx-4.02 GC RC.NET Driver Support Only

Agilent 35900 A/D Converter

Instrument	Supported Firmware Version (minimum)	Software Driver	Notes
Agilent 35900E	E.01.02		TCP/IP

Agilent 35900E A\D Converter support with Agilent Instrument

Instrument	Supported with 35900E	Comment
7890A GC	Not Supported	Not Supported
7820A GC	Not Supported	Not Supported
6890 GC	Classic driver support only	3 rd and 4 th signal support
6850 GC	Classic driver support only	3 rd and 4 th signal support
11XX\12XX LC	Supported with both Classic and RC.NET	LAN only
7100 Electrophoresis	No	Not Supported
6100 Electrophoresis	Classic Driver Support Only	LAN only

Agilent MS Driver for LC\MS Support

Model	Module Type	Supported Firmware	Supported Driver Type	Communications
G6110A	MSD	3.02.42	Classic Plus	TCP/IP
G6120A	MSD	3.02.42	Classic Plus	TCP/IP
G6130A	MSD	3.02.42	Classic Plus	TCP/IP
G6140A	MSD	3.02.42	Classic Plus	TCP/IP
G6120B	MSD	3.02.42	Classic Plus	TCP/IP
G6130B	MSD	3.02.42	Classic Plus	TCP/IP
G6150B	MSD	3.02.42	Classic Plus	TCP/IP
G1956A	MS Detector For 1100\1200 LC	Not Supported	Not Supported	Not Supported
G1956B	MS Detector For 1100\1200 LC	Not Supported	Not Supported	Not Supported

ChemStation Value Line Edition Firmware Support Information:

Value Line Compatibility with GC Hardware

Instrument	Model	Supported Firmware Version (minimum)	Software Driver	Notes
7820A	G4350A	A.01.12.002	78xx-4.02	No Software Add-on Support

Value Line Compatibility with Agilent 1120 Compact LC

Instrument/ Driver Type	Module Type	Module Names	Communications	Supported Firmware Versions (minimum)
RC.NET	1120 Isocratic	G4286A	TCP/IP	B.06.26
RC.NET	1120 Isocratic	G4287A	TCP/IP	B.06.26
RC.NET	1120 Gradient	G4288A	TCP/IP	B.06.26
RC.NET	1120 Gradient	G4289A	TCP/IP	B.06.26
RC.NET	1120 Gradient	G4290A	TCP/IP	B.06.26
RC.NET	1100/1200 RID	G1362A	(CAN Cable)	A.06.32
RC.NET	1100/1200 FLD	G1321A	(CAN Cable)	A.06.32
RC.NET	1100/1200 ELSD	G4218A	RS-232	V1.3, V1.4 (higher data rate)
RC.NET	ELSD 380 Detector	G4260A	RS-232	25.0
RC.NET	ELSD 385 Detector	G4261A	RS-232	25.0

Value Line Compatibility with Agilent 1220 LC System

Instrument/ Driver Type	Module Type	Module Names	Communications	Supported Firmware Versions (minimum)	Notes
RC.NET	1220 Isocratic 600 bar	G4286B	TCP/IP	B.06.32	
RC.NET	1220 Isocratic 600 bar	G4287B	TCP/IP	B.06.32	Upgrade G4286B with Oven and ALS. Use Lab Advisor B.01.04 to get new module number.
RC.NET	1220 Gradient 600 bar	G4288B	TCP/IP	B.06.32	
RC.NET	1220 Gradient 600 bar	G4289B	TCP/IP	B.06.32	Upgrade G4288B with Oven. Use Lab Advisor B.01.04 to get new module number.
RC.NET	1220 Gradient 600 bar	G4290B	TCP/IP	B.06.32	
RC.NET	1220 Isocratic 600 bar	G4291B	TCP/IP	B.06.32	Upgrade 4286B with Oven. Use Lab Advisor B.01.04 to get new module number.
RC.NET	1220 Isocratic 600 bar	G4292B	TCP/IP	B.06.32	Upgrade G4286B with ALS. Use Lab Advisor B.01.04 to get new module number.
RC.NET	1220 Gradient 600 bar	G4293B	TCP/IP	B.06.32	Upgrade G4288B with ALS. Use Lab Advisor B.01.04 to get new module number.
RC.NET	1220 Isocratic 400 bar	G4288C	TCP/IP	B.06.32	
RC.NET	1220 Isocratic 400 bar	G4289C	TCP/IP	B.06.32	Upgrade G4288C with ALS. Use Lab Advisor B.01.04 to get new module number.
RC.NET	1220 Isocratic 400 bar	G4290C	TCP/IP	B.06.32	
RC.NET	1220 Isocratic 400 bar	G4293C	TCP/IP	B.06.32	Upgrade G4288C with ALS. Use Lab Advisor B.01.04 to get new module number.
RC.NET	RID	G1362A	(CAN Cable)	A.06.32	
RC.NET	FLD	G1321A	(CAN Cable)	A.06.32	
RC.NET	ELSD	G4218A	RS-232	V1.3, V1.4 (higher data rate)	
RC.NET	ELSD 380 Detector	G4260A	RS-232	25.0	
RC.NET	ELSD 385 Detector	G4261A	RS-232	25.0	

In This Book

This guide presents the supported instruments and firmware for operation of the Agilent OpenLAB Chromatography Data System (CDS).