



## **Gases**

# Gas analysis in nuclear power plant

## Application Note

Environmental

### **Authors**

Agilent Technologies, Inc.

### **Introduction**

The environment of the reactor in a nuclear power plant must be checked for the presence of different gases. It is important is to have a portable system with sufficient sensitivity and separation power, such as the Agilent 490 Micro GC with an Agilent CP-Molsieve 5Å column.



**Agilent Technologies**

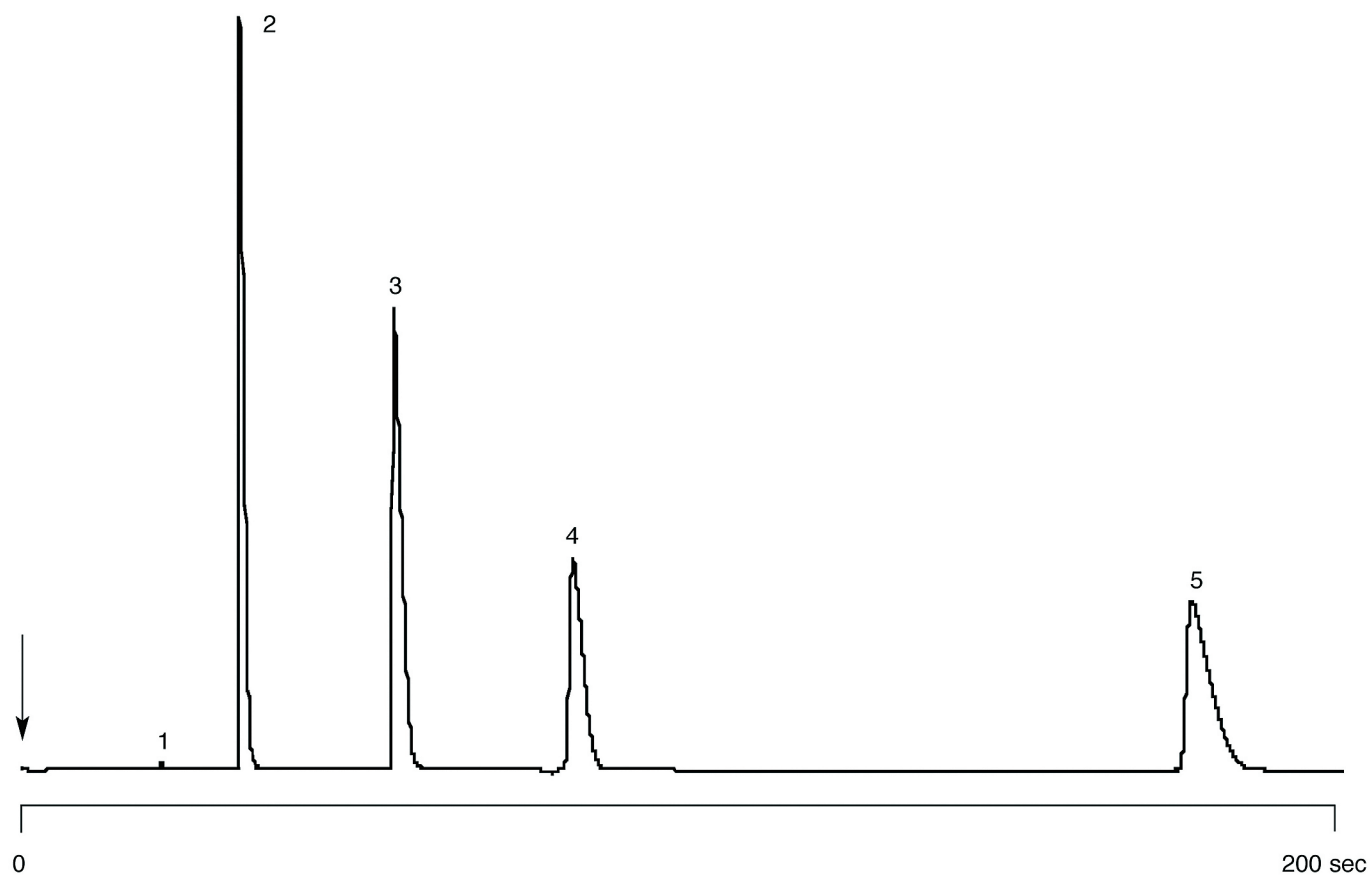
## Conditions

Technique : Micro-GC  
Column : Agilent PoraPLOT Q, 0.25 mm x 10 m PLOT  
(Part no. CP737057)  
Temperature : 50 °C  
Carrier Gas : He, 100 kPa (1.0 bar, 14 psi)  
Pressure program : no  
Heated injector : no  
Injection time. : 100 msec  
Concentration range : 5%  
Matrix : N<sub>2</sub>

Courtesy : Pascal Vattaire/Jean-Luc Barranca, Agilent France S.A.

## Peak identification

1. hydrogen
2. oxygen
3. nitrogen
4. methane
5. carbon monoxide



[www.agilent.com/chem](http://www.agilent.com/chem)

This information is subject to change without notice.

© Agilent Technologies, Inc. 2011

Printed in the USA

31 October, 2011

First published prior to 11 May, 2010

A01621



**Agilent Technologies**