



FlexCell™

The most versatile flow cell for LC-ECD

- **Exchangeable working electrode**
- **Working Electrodes: GC, Pt, Au, Ag, MD**
- **Low cost of ownership**
- **Dedicated for PAD applications**

The name FlexCell is chosen since it emphasizes the versatility and serviceability of this thin-layer flow cell in the Antec program. With its unrivaled design working electrodes can be serviced or replaced in a few minutes. The low cost of ownership is attributed to the replacement of only the working electrode disc. The same holds for switching electrode material for different applications using the same flow cell. This makes the Flexcell suitable for all sorts of electrochemical analyses like the usual biogenic amines (glassy carbon), carbohydrates (gold), peroxides (platinum), halides (silver), sulfides (Magic Diamond) etc.

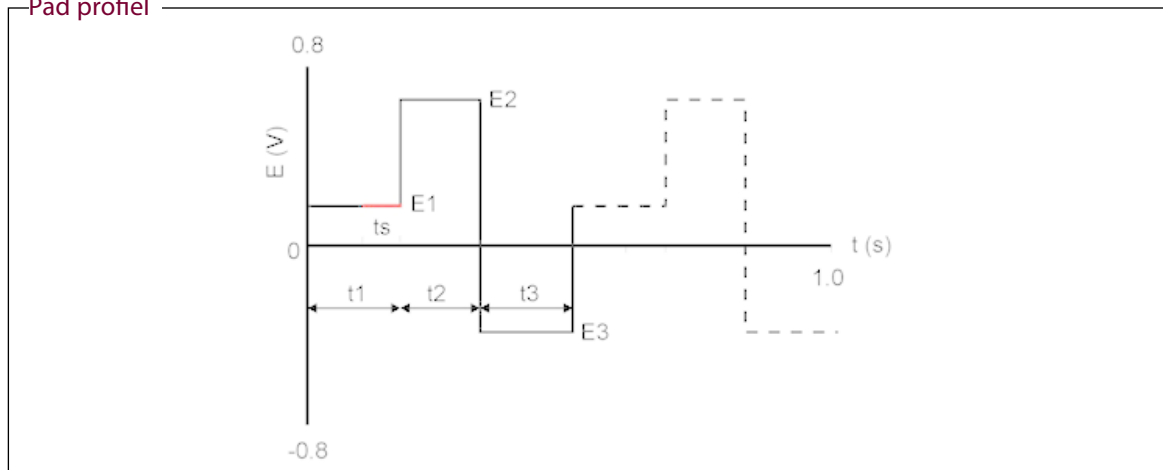
Applications

The FlexCell properties are particularly useful in applications using metal working electrodes. A typical example is the pulsed amperometric detection of carbohydrates, where consumption of



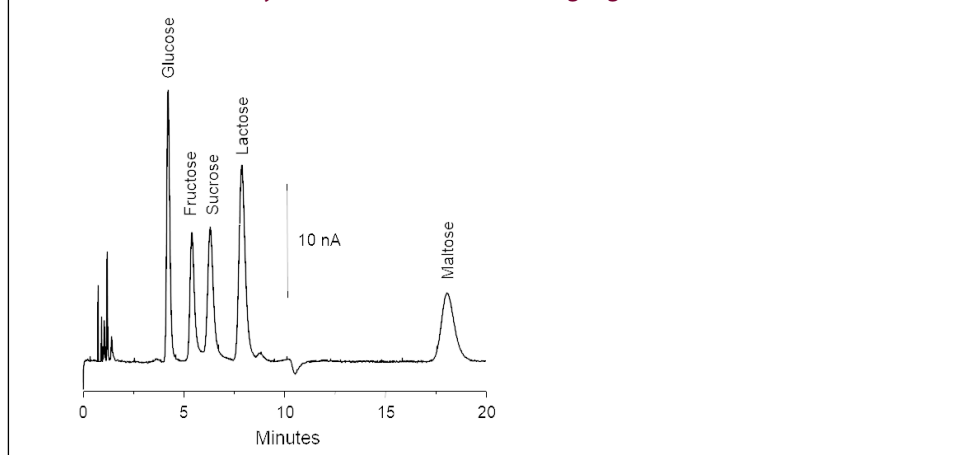
the gold working electrode occurs. Renewal of the gold electrode is done in a few minutes when the erosion has become unacceptable. The total cell volume is less than 1 μL , which makes the Flexcell suitable as an electrochemical reactor in-line with other detectors.

Pad profil





HPLC-ECD of carbohydrates in Pulse mode using a gold electrode



Specifications FlexCell

Cell type	Three electrode, thin-layer reactor cell
Cell volume	approx. 0.7 μ L (50 μ m spacer) , 1.5 μ L (100 μ m spacer)
Spacers	50 μ m
Working electrode diameter	8 mm
Working electrode area (wetted)	15 mm ²
Working electrodes (WE)	Glassy carbon (GC) , Magic Diamond™ (MD), gold (Au), platinum (Pt), Optional: semi-precious metal reducing electrode (SPM), silver (Ag) and copper (Cu)
Reference electrode	HyREF™ (Pd/H ₂) Sb and ISAAC
Auxiliary electrode	Carbon-loaded PTFE
Wetted materials	PCTFE, FEP, Palladium, carbon-loaded PTFE, WE material (Au or Pt, GC, MD, SPM, Ag, Cu)
Flow rate	Typically 5 – 20 μ L/min
Max. pressure	40 psi / 2.8 bar
Fluidic connections	1/16" o.d. PEEK tubing, with 10-32 PTFE fingertight connections
Electric connections	Cell cable for use with ROXY Potentiostat

Part no	Description (Flexcells)	Part no	Description (Flexcells)
102.4305	Flexcell MD HyREF	102.4125	Flexcell Au sb
102.4305	Flexcell GC HyREF	102.4130	Flexcell Ag sb
102.4320	Flexcell Pt HyREF	102.4205	Flexcell GC ISAAC
102.4325	Flexcell Au HyREF	102.4220	Flexcell Pt ISAAC
102.4330	Flexcell Ag HyREF	102.4225	Flexcell Au ISAAC
102.4105	Flexcell GC sb	102.4230	Flexcell Ag ISAAC
102.4120	Flexcell Pt sb		

Part no	Description (Electrodes)
102.5007	Flexcell WE disc GC (glassy carbon)
102.5022	Flexcell WE disc Pt (platinum)
102.5027	Flexcell WE disc Au (gold)
102.5032	Flexcell WE disc Ag (silver)
102.5037	Flexcell WE disc Cu (copper)
102.5050	Flexcell WE disc MD (magic diamond)
210.5037	Copper (Cu) working electrode
210.5050	Magic Diamond (MD) working electrode

Electrode Holder



Working electrode holder (assembly) with supplied electrodes: Pt, Au, GC and MD (left to right).

Antec (USA)
info@myantec.com
www.myAntec.com
 phone (888) 572-0012
 (toll free)

Antec (worldwide)
info@myantec.com
www.myAntec.com
 phone +31 71 5813333

