



Fast Analysis of Eleutherosides in Siberian Ginseng Using the Agilent 1290 Infinity LC and Eclipse 1.8 μm Column

Application Note

Author

Nick Severin
Schwabe North America
Green Bay, WI
USA

Abstract

Analysis of eleutherosides in *Eleutherococcus senticosus* (often called Siberian Ginseng) extract is typically performed using parameters outlined by the United States Pharmacopeia [1]. A method has been developed using an Agilent 1290 Infinity LC with an Agilent ZORBAX EclipsePlus 3 \times 100 mm, 1.8 μm UHPLC column. This new method reduces solvent consumption and improves peak resolution.



Agilent Technologies

Introduction

Siberian ginseng (*Eleutherococcus senticosus*) has been used for centuries to prevent colds and flu, and to increase energy, longevity, and vitality. The Siberian ginseng is originally native to the far East countries, and its roots are harvested for medicinal purposes. The proposed active ingredients in Siberian ginseng, eleutherosides, are believed to stimulate the immune system [2]. Other ginseng types, particularly panax ginseng, are normally characterized for ginsenosides, making the Siberian variant unique with respect to the active components.

Experimental

Eleuthero extract was purchased from Draco, 539 Parrott St. San Jose, CA 95112

Sample Preparation

A 500 mg amount of extracted sample was dissolved in 100 mL of 50/50 methanol/water by sonication for 30 minutes.

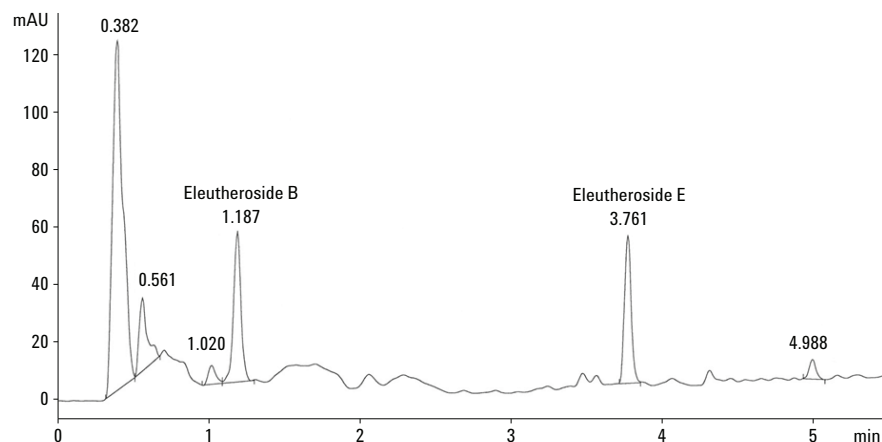


Figure 1. Eleutherosides in Siberian ginseng using an Agilent 1290 Infinity LC with an Agilent ZORBAX Eclipse Plus, 3 × 100 mm, 1.8 μm column.

Results and Discussion

Figure 1 shows the chromatogram produced when analyzing for Siberian ginseng using an Agilent ZORBAX Eclipse Plus column and the instrument conditions listed in Table 1. Figure 2 shows the chromatogram produced by Siberian ginseng analysis using the USP method, listed in Table 2, with an Agilent C18 column. Both methods used the same mobile phase, flow rate, and temperature. In addition, both chromatograms show good separation and peak shape. However, comparison of the results illustrates that the Agilent method results in an overall cycle time savings of 25 minutes, as well as a reduction of solvent consumption.

Peak confirmation is accomplished using certified reference standards with the same separation conditions used for sample extracts. This separation, shown in Figure 3, gives excellent retention time matching when compared to the extracts in Figure 1.

Table 1. Instrument Parameters for Siberian Ginseng Detection using an Agilent 1290 Infinity LC/MS

Temperature	25 °C	
Flow rate	1.0 mL/minute	
Detection	UV, 220 nm	
Mobile Phase A	5% acetonitrile/95% water	
Mobile Phase B	60% acetonitrile/40% water	
Gradient		
Time (min)	% A	%B
0.00	85	15
2.00	85	15
5.14	60	40
5.34	5	95
7.71	5	95
7.72	85	15
9.44	85	15

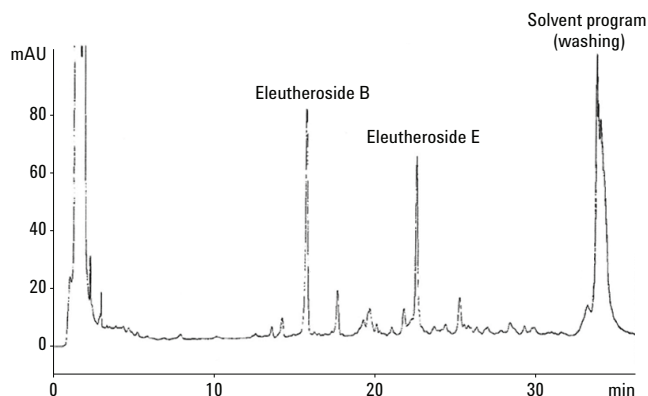


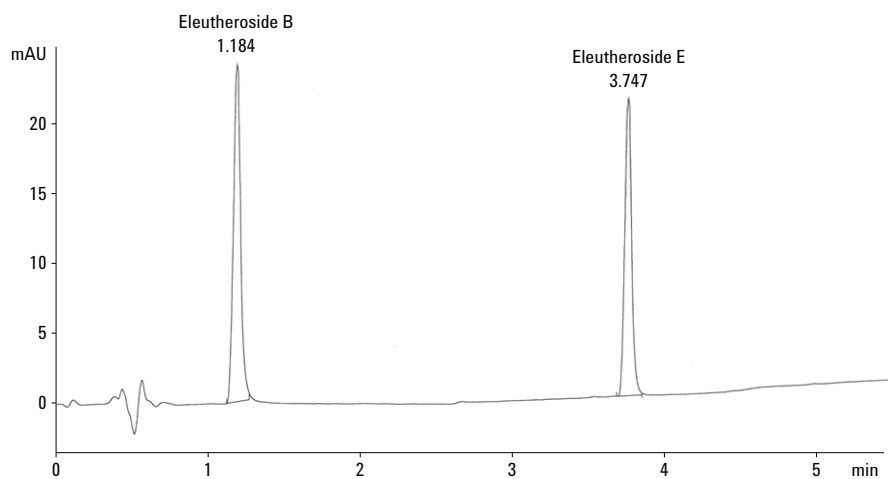
Figure 2. Eleutherosides in powdered eleuthero extract; USP method using an Agilent C-18, 250 × 4.6 mm, 5.0 μm column [2].

Table 2. Instrument Conditions for Siberian Ginseng Detection using the USP Method

Temperature	25 °C
Flow rate	1.0 mL/minute
Detection	UV, 220 nm
Mobile Phase A	5% acetonitrile/95% water
Mobile Phase B	60% acetonitrile/40% water

Gradient

Time (min)	% A	%B
0	97	3
5	97	3
30	60	40
31	5	95
45	5	95
45.1	97	3
60	97	3



Eleutheroside B	Chromadex #ASB-0005060 – Lot # 00005060-004
Calibration amount	0.004786 mg/mL
%RSD of 5 injections	0.2467
Eleutheroside E	Sigma-Aldrich #08198 – Lot # BCBH6095V
Calibration amount	0.012724 mg/mL
%RSD of 5 injections	0.1428

Figure 3. Eleutherosides reference standards.

Conclusions

The Agilent 1290 Infinity LC/MS with an Agilent ZORBAX Eclipse Plus sub-2 μm column provides excellent results when analyzing complex botanical extracts such as Siberian ginseng. This method provides a reduction in cycle time, solvent use, and labor costs without loss of resolution.

References

1. Powdered Eleuthero Extract Monograph, United States Pharmacopeia, USP35, NF30 p.1287, ISBN reference 978-1-936424-00-9.
2. Siberian Ginseng, University of Maryland Medical Center, 2011. <http://umm.edu/health/medical/altmed/herb/siberian-ginseng>

For More Information

These data represent typical results. For more information on our products and services, visit our Web site at www.agilent.com/chem.

www.agilent.com/chem

Agilent shall not be liable for errors contained herein or for incidental or consequential damages in connection with the furnishing, performance, or use of this material.

Information, descriptions, and specifications in this publication are subject to change without notice.

© Agilent Technologies, Inc., 2013
Printed in the USA
August 23, 2013
5991-2870EN



Agilent Technologies