

PRODUCE RAPID RESULTS AND DEFENSIBLE DATA

The Measure of Confidence



Agilent Dual Channel Blood Alcohol Analyzer

Blood alcohol concentration (BAC) directly correlates to impaired reaction times and judgment; accordingly, jurisdictions worldwide have established strict limits (mg/100 mL) for BAC while driving. To produce defensible BAC results, laboratories require reliable, accurate, and high-throughput methods.

Headspace GC analysis is the most widely used technique for determining ethanol concentration in blood. While system specifics may vary between jurisdictions, there is a need for BAC analyzers that comply with the majority of lab requirements.

Meet your demands for high-throughput analysis and precise, accurate data

Agilent Dual Channel Blood Alcohol Analyzers combine the 7697A Headspace Sampler with an Agilent 7890B GC system configured for dual-channel analysis using DB-ALC1 and DB-ALC2 columns. This dual-channel capability differentiates ethanol from interferences caused by common metabolites – allowing you to confirm the presence of ethanol and determine its concentration. Other advantages include:

- Rapid cycle time: Four minute run times increase throughput
- Proven EPC and CFT technology: Ensures reproducible sample split and reliable column flow
- No carryover following a system challenge using a 0.50% EtOH concentration sample
- Excellent performance and reproducibility: The system k factor for a 0.30% w/v ethanol control had a standard deviation of 0.0003 or better

Ready to go:

Every Dual Channel Blood Alcohol Analyzer reflects innovative technology and a stringent quality control process:

Factory

- System setup, column installation, and leak testing
- Instrument checkout
- Performance verification using application checkout mix

Delivery

- Instrument manual and checkout chromatogram
- CD-ROM with method parameters and checkout data for out-of-the-box operation
- Includes method-specific consumables and re-ordering information

Installation

- Onsite performance verification executed by support engineer
- Optional application startup assistance



Agilent Technologies

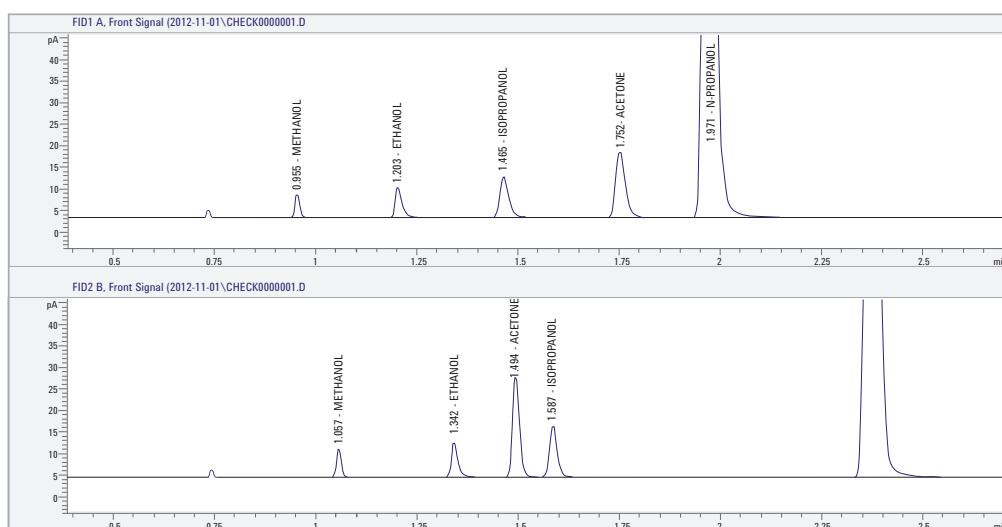
Rugged – and reproducible

BAC analysis that easily adapts to your SOPs

Toxicology, forensic, and medical examiner labs follow well-defined procedures designed to generate data that withstand cross-examination. Typically, daily calibrations, negative controls, ethanol controls, and analysis of a multi-component mix are all required to verify system suitability.

Your lab can build its daily routine around Agilent's Dual Channel Blood Analyzers, which include:

- **Capillary Flow Technology (CFT)** control for reproducible splitting of the sample between AC1 and AC2
- **Retention Time Locking (RTL)** ensures consistent retention times after column maintenance



Ethanol and mixed volatile calibrator at 0.01% per component. N-propanol ISTD. The compounds elute at different retention times due to different column selectivities; therefore, two-channel analysis provides additional confirmation of accuracy.

Put your laboratory on the analytical fast track

Contact your local Agilent Representative or Agilent Authorized Distributor at agilent.com/chem/contactus

Or call **800-227-9770** (in the U.S. or Canada)

Or visit agilent.com/chem/appkits

Ordering information:

To order Agilent's Dual Channel Blood Alcohol Analyzer specify:

G3445B #683 Dual Channel Blood Alcohol Analyzer

This information is subject to change without notice.

© Agilent Technologies, Inc. 2013
Printed in U.S.A., June 25, 2013
5991-2654EN



Agilent Technologies