

# Reveleris® X2 Flash System

## Flavanone Glycoside Purification with Reveleris® Flash Chromatography System Improves Isolation of Polar Compounds

### Introduction

Neohesperidin, naturally available from bitter orange, is an intensely bitter flavanone glycoside used for producing the non-sugar sweetening agent neohesperidin dihydrochalcones for diabetes related therapy.<sup>1</sup> The compound is known to have a strong synergistic effect in combination with other sweeteners, such as aspartame, xylitol, and saccharin, for controlling the sugar uptake in human body.

During the synthesis of neohesperidin, hesperitin and neo-hesperidose are used as reagents. Using the Reveleris® X2 system with RevealX™ technology and the high capacity Reveleris® amino cartridges, unreacted or even degraded reagents that may be undetected with UV detection can be isolated from the mixture.

### Flash Chromatography Conditions:

**Cartridge:** Reveleris® amino media 40g  
**Flow Rate:** 40mL/min  
**Equilibration:** 10.0 min  
**Run Length:** 25.0 min  
**UV1 Wavelength:** 220nm  
**UV2 Wavelength:** 254nm  
**Solvent A:** Water  
**Solvent B:** Acetonitrile

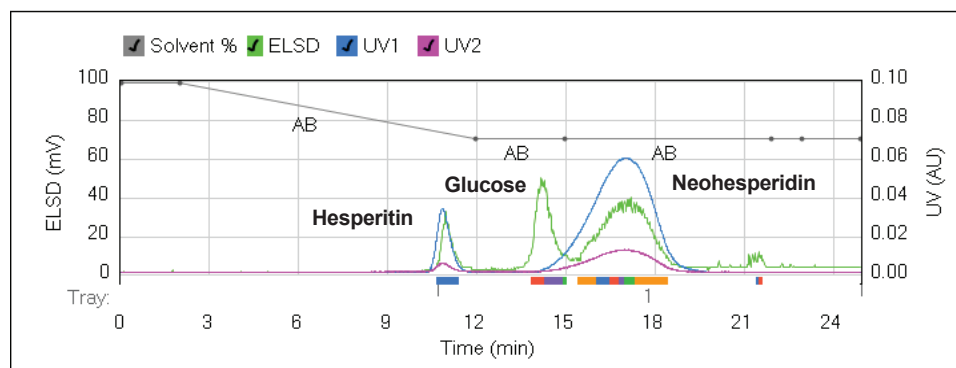
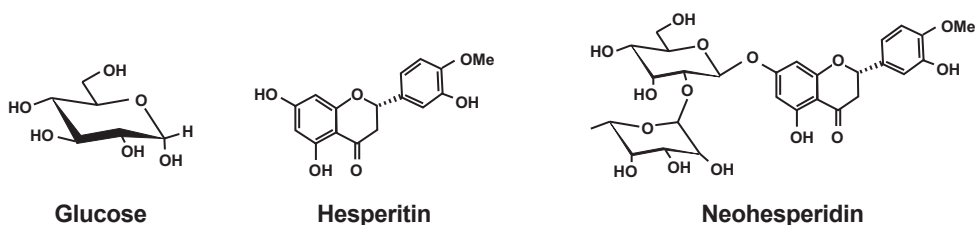


Figure 1: Purification of neohesperidin isolates glucose in the mixture using the RevealX™ detection

### Gradient Table

Step	Time (min.)	%B
1	0.0	99
2	2.0	99
3	10.0	70
4	13.0	70



### Conclusion

Glycosidic compounds such as neohesperidin are not easily separated on a reversed phase column from other polar components while traditional detectors, such as UV, fails to detect sugar compounds used for conjugation during synthesis. Silica gel modified with amino phase retains polar, basic molecules and may be used in the separation of peptides, sugars, steroids, and triglycerides. Using the high capacity amino cartridge and the RevealX™ technology in the Reveleris® X2 flash system, both polar and non-chromophoric compounds are separated and isolated during flash chromatography purification.

### References

1. Medicinal natural products; a biosynthetic approach, 3rd edition; Dewick, P.; John Wiley & Sons, Inc., Hoboken, New Jersey, 2009.

ALLTECH® and REVELERIS® are trademarks, registered in the United States and/or other countries, of Alltech Associates, Inc. REVEALX™ is a trademark of Alltech Associates, Inc. GRACE® is a trademark, registered in the United States and/or other countries, of W. R. Grace & Co.-Conn. GRACE DISCOVERY SCIENCES™ is a trademark of W. R. Grace & Co.-Conn. This trademark list has been compiled using available published information as of the publication date of this brochure and may not accurately reflect current trademark ownership or status. Alltech Associates, Inc. is a wholly owned subsidiary of W. R. Grace & Co.-Conn. Grace Discovery Sciences is a product group of W. R. Grace & Co.-Conn., which now includes all product lines formerly sold under the Alltech brand. © Copyright 2010 Alltech Associates, Inc. All rights reserved. The information presented herein is derived from our testing and experience. It is offered for your consideration and verification. Since operating conditions vary significantly, and are not under our control, we disclaim all warranties on the results that may be obtained from the use of our products. W. R. Grace & Co.-Conn. and its subsidiaries can not be held responsible for any damage or injury occurring as a result of improper installation or use of its products. Grace reserves the right to change prices and/or specifications without prior notification.

**W. R. Grace & Co.-Conn.**  
**7500 Grace Drive, Columbia, MD 21044**

Grace Discovery Sciences Regional Headquarters:

**IN THE AMERICAS:**  
 2051 Waukegan Road  
 Deerfield, IL 60015-1899  
 Tel: 1 847 948 8600  
 Fax: 1 847 948.1078  
 Email: [discoverysciences@grace.com](mailto:discoverysciences@grace.com)

**IN EUROPE:**  
 Brandstraat 12  
 B-9160 Lokeren, Belgium  
 Tel: +32 (0)9-340-65 65  
 Fax: +32 (0)9 340 65 60  
 Email: [discoverysciences.EU@grace.com](mailto:discoverysciences.EU@grace.com)

**IN ASIA:**  
 19th Floor, K.Wah Center  
 1010 Huai Hai Zhong Road  
 Shanghai, 200031 PRC  
 Tel: 86 21 5467 4678  
 Fax: 86 21 5405 1500  
 Email: [dsbiz.asia@grace.com](mailto:dsbiz.asia@grace.com)

**IN INDIA:**  
 17 Commerce Center  
 Opposite Krishna Hospital, Paud Road  
 Pune, 411038 India  
 Tel: +91 20 6644 9900  
 Fax: +91 20 2544 1740  
 Email: [pune@grace.com](mailto:pune@grace.com)

**IN AUSTRALIA/NEW ZEALAND:**  
 2 Kerr Court  
 Rowville, 3178  
 Victoria, Australia  
 Tel: +61 3 9237 6100  
 Fax: +61 3 9237 6101  
 Email: [discoverysciences.AU@grace.com](mailto:discoverysciences.AU@grace.com)