

Reveleris® X2 Flash System

Isolation and Purification of Chromophoric and Non-chromophoric Compounds in Giant Knotweed Rhizome

Introduction

Giant knotweed rhizome is a common medicinal plant in China, and is used for a range of purposes.

This application note shows the separation and isolation of the chromophoric and non-chromophoric compounds in giant knotweed rhizome by using the Reveleris® X2 flash instrument.

Flash Chromatography Conditions:

12 gram Reveleris® RP C18 cartridge

Flow Rate: 30mL/min

Cartridge Equilibration: 3 min.

Slope Detection: Low

ELSD Threshold: 10mV

UV Threshold: 0.02AU

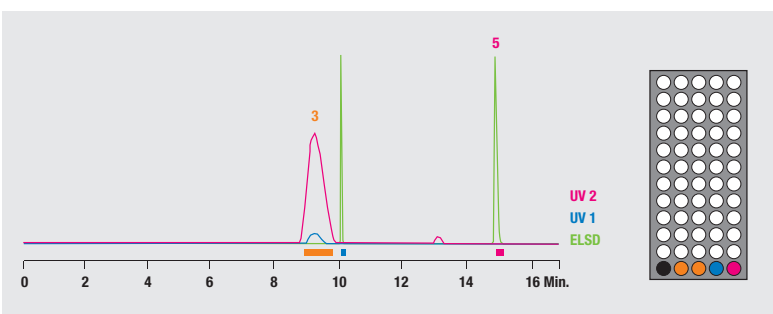
UV1 Wavelength: 254nm

UV2 Wavelength: 280nm

Injection Type: Solid

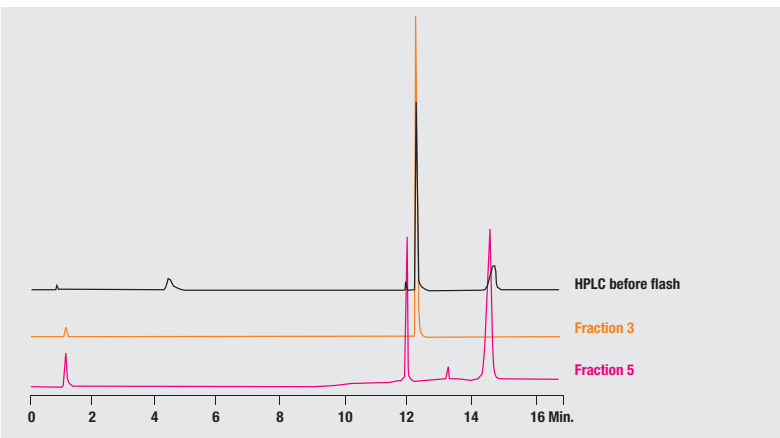
Solvent A: Water

Solvent B: Acetonitrile



Separation of chromophoric and non-chromophoric compounds in giant knotweed flash chromatography.

Gradient:	Time:	0	8.1	11.7	14.1	17	18	19
	%B:	0	30	70	100	100	0	0



HPLC Chromatograms of giant knotweed fractions collected by the Reveleris® X2 flash system.

Conclusion

Using the proposed procedure with the Reveleris® X2 flash instrument and Reveleris® cartridges, the separation and isolation of chromophoric and non-chromophoric compounds in giant knotweed rhizome extract can be easily achieved.

www.discoverysciences.com

12/2012 M325a

Americas
Deerfield, Illinois
Tel: +1 847.948.8600
discoverysciences@
grace.com

Europe
Lokeren, Belgium
Tel: +32 (0)9.340.65.65
discoverysciences.EU@
grace.com

India
Pune
Tel: +91 20.6644.9900
pune@grace.com

China
Shanghai
Tel: +86 21.5467.4678
dsbiz.asia@grace.com

Australia
Rowville
Tel: +61 3.9237.6100
discoverysciences.AU@
grace.com

GRACE® is a trademark, registered in the United States and/or other countries, of W. R. Grace & Co.-Conn. ALLTECH® and REVELERIS® are trademarks, registered in the United States and/or other countries, of Alltech Associates, Inc. This trademark list has been compiled using available published information as of the publication date of this brochure and may not accurately reflect current trademark ownership or status. Grace Discovery Sciences is a product group of W. R. Grace & Co.-Conn., which now includes all product lines formerly sold under the Alltech brand. Grace Materials Technologies is a business segment of W.R. Grace & Co.-Conn. which now includes product lines formerly sold under the Grace Davison brand. Alltech Associates, Inc. is a wholly owned subsidiary of W. R. Grace & Co.-Conn. © Copyright 2012 Alltech Associates, Inc. All rights reserved. The information presented herein is derived from our testing and experience. It is offered for your consideration and verification. Since operating conditions vary significantly, and are not under our control, we disclaim all warranties on the results that may be obtained from the use of our products. W. R. Grace & Co.-Conn. and its subsidiaries can not be held responsible for any damage or injury occurring as a result of improper installation or use of its products. Grace reserves the right to change prices and/or specifications without prior notification.