

Reveleris® X2 Flash System

RevealX™ Technology Allows Both Chromophoric and Non-chromophoric Component Isolation from Cat's Claw Extract

Introduction

Cat's claw, a tropical vine, is considered a valuable medicinal resource for scientific research. The active substances are alkaloids, tannins, and several other phytochemicals that may have the potential to boost the immune system.¹ The presence of alkaloids provides anti-hypertensive effects and may lower cholesterol, as well as contribute anti-inflammatory, antioxidant, and anticancer properties.²

Extraction Conditions:

Extract type: Powder
Weight: 3g
Extraction Solvent: Methanol
Solvent Volume: 10mL
Ultra-sonication: 30 min at 60°C

Flash Chromatography Conditions:

Cartridge: Reveleris® C18 media 12g
Solvent A: Water
Solvent B: Methanol
Flow Rate: 30mL/min
UV1 Wavelength: 254nm
UV2 Wavelength: 220nm
Cartridge Equilibration: 5.0 min
Injection Type: Liquid

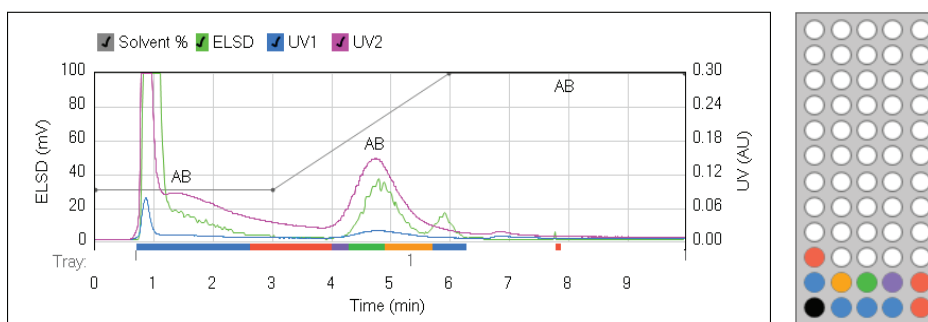


Figure 1: Using the Reveleris® X2 flash system and RevealX™ technology, Cat's Claw extract has been purified on a reversed phase Reveleris® 12g cartridge. The chromatogram shows the benefits of detecting peaks using the UV and the ELSD detectors.

Gradient Table

Step	Time (min.)	%B
1	0.0	30
2	3.0	30
3	3.0	100
4	4.0	100

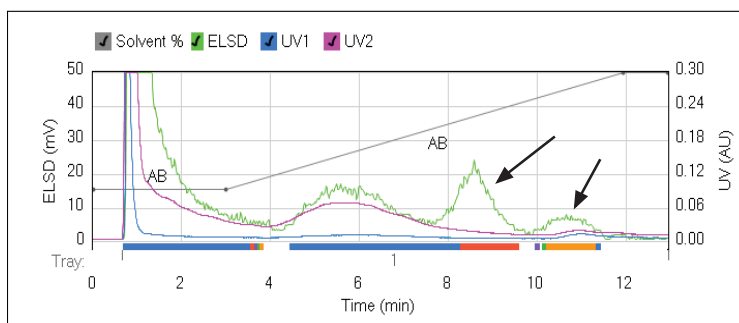


Figure 2: Optimized gradient method improves resolution for higher purity fractions.

Gradient Table

Step	Time (min.)	%B
1	0.0	30
2	3.0	30
3	9.0	100
4	1.0	100

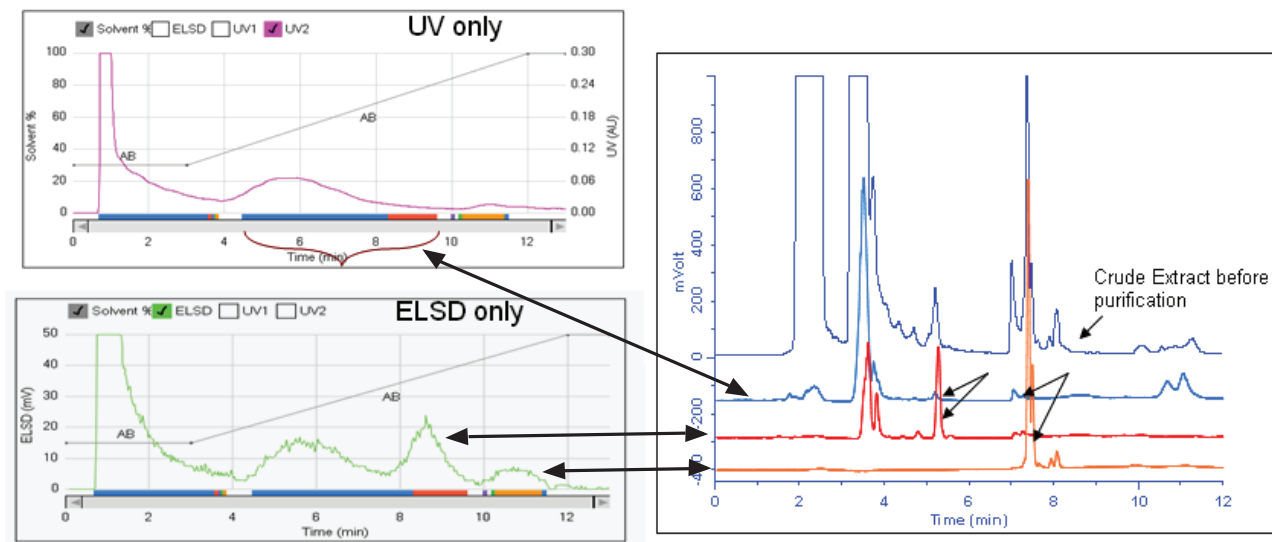


Figure 3: Samples purified using UV signal only fails to detect non-chromophoric peaks leading to impure and diluted fractions. Fractions collected using ELSD isolate components with higher recovery and purity.

Conclusion

Natural products play a dominant role in the development of new drugs for medicinal purposes. Crude extract typically contains lead compounds, requiring multiple steps to isolate and purify. Purification bottlenecks encountered when using traditional flash chromatography can be eliminated by using the Reveleris® X2 flash system, which independently collects peaks detected from multiple detectors, including UV and ELSD for both chromophoric and non-chromophoric compounds. This leads to fractions with pure compounds and higher recovery. Equipped with universal RevealX™ detection and the Navigator™ software technology, chemists can isolate target compounds and low-level components from their crude extracts, saving time and labor.

References

1. Cat's Claw; Technical Literature, Raintree Nutrition, Carson City, Nevada.
2. Medicinal natural products; a biosynthetic approach, 3rd edition; Dewick, P.; John Wiley & Sons, Inc., Hoboken, New Jersey, 2009.

www.discoverysciences.com

ALLTECH® and REVELERIS® are trademarks, registered in the United States and/or other countries, of Alltech Associates, Inc. REVEALX™ is a trademark of Alltech Associates, Inc. GRACE® is a trademark, registered in the United States and/or other countries, of W. R. Grace & Co.-Conn. GRACE DISCOVERY SCIENCES™ is a trademark of W. R. Grace & Co.-Conn. This trademark list has been compiled using available published information as of the publication date of this brochure and may not accurately reflect current trademark ownership or status. Alltech Associates, Inc. is a wholly owned subsidiary of W. R. Grace & Co.-Conn. Grace Discovery Sciences is a product group of W. R. Grace & Co.-Conn., which now includes all product lines formerly sold under the Alltech brand. Grace Materials Technologies is a business segment of W. R. Grace & Co.-Conn. which includes products formerly sold under the Grace Davison brand. © Copyright 2013 Alltech Associates, Inc. All rights reserved. The information presented herein is derived from our testing and experience. It is offered for your consideration and verification. Since operating conditions vary significantly, and are not under our control, we disclaim all warranties on the results that may be obtained from the use of our products. W. R. Grace & Co.-Conn. and its subsidiaries can not be held responsible for any damage or injury occurring as a result of improper installation or use of its products. Grace reserves the right to change prices and/or specifications without prior notification.

07/2013 M352a

W. R. Grace & Co.-Conn.
7500 Grace Drive, Columbia, MD 21044

Grace Discovery Sciences Regional Headquarters:

IN THE AMERICAS:

2051 Waukegan Road
 Deerfield, IL 60015-1899
 Tel: 1 847 948 8600
 Email: discoverysciences@grace.com

IN EUROPE:

Brandstraat 12
 B-9160 Lokeren, Belgium
 Tel: +32 (0)9-340-65 65
 Email: discoverysciences.EU@grace.com

IN ASIA:

19th Floor, K.Wah Center
 1010 Huai Hai Zhong Road
 Shanghai, 200031 PRC
 Tel: 86 21 5467 4678
 Email: dsbiz.asia@grace.com

IN INDIA:

17 Commerce Center
 Opposite Krishna Hospital, Paud Road
 Pune, 411038 India
 Tel: +91 20 6644 9900
 Email: pune@grace.com

IN AUSTRALIA:

2 Kerr Court
 Rowville, 3178
 Victoria, Australia
 Tel: +61 3 9237 6100
 Email: discoverysciences.AU@grace.com

GRACE