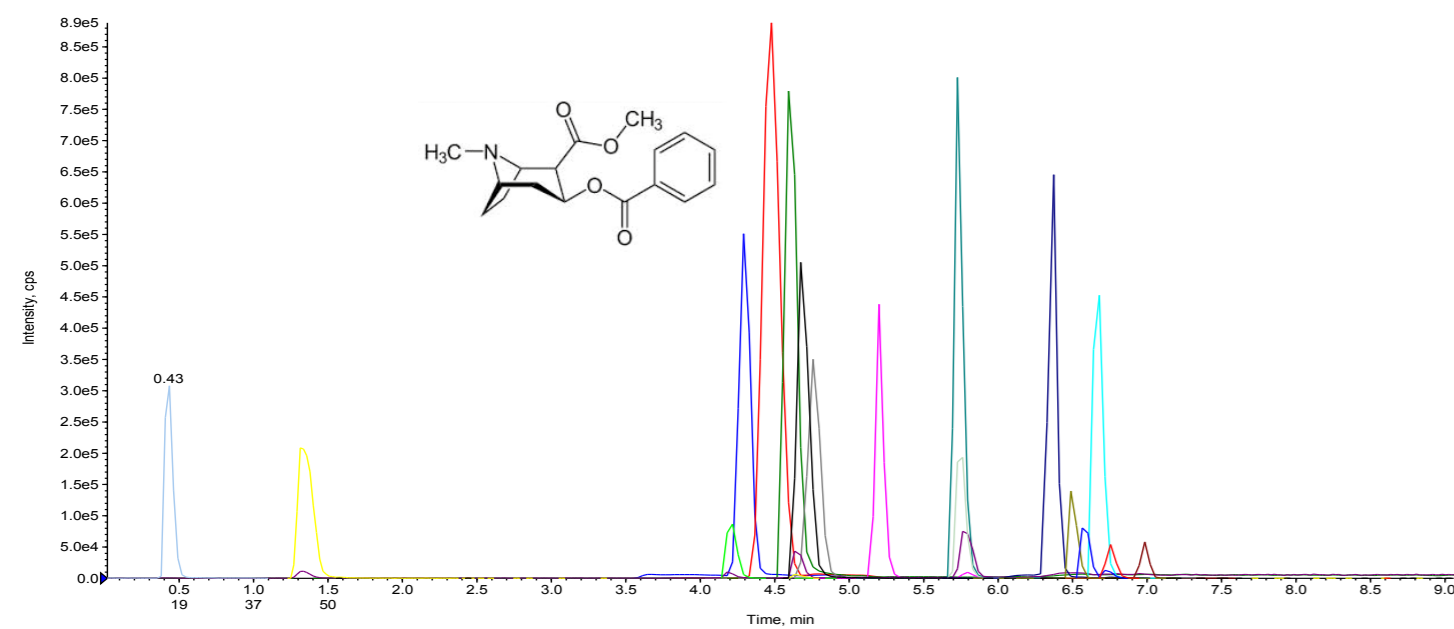


Forensic Toxicology

	DESCRIPTION	N. TESTS	CODE
GC-MS	Amphetamines in urine by detector MS <i>3,4-MDA (Ecstasy), 3,4-MDA, 3,4-MDE, Amphetamine, Methamphetamine, Ephedrine, Pseudoephedrine, Norpseudoephedrine, MBDB</i>	50	GC43010
GC-MS	Amphetamines in blood by detector MS <i>3,4-MDA, 3,4-MDE, il 3,4-MDMA, Amphetamine, Metamphetamine, MBDB</i>	50	GC89110
GC-MS	Benzoyllecgonine and Cocaethylene in urine by detector MS	50	GC46010
GC-MS	Delta9-tetrahydrocannabinol-COOH (THC) in urine by detector MS	50	GC47010
GC-MS	Delta-9-THC in hair by GC/MS	50	GC53010
GC-MS	Drugs of Abuse in hair by GC/MS <i>Morphine, Codeine, 6-MAM, Cocaine, Benzoyllecgonine, Ecgonine Methyl Ester, Cocaethylene, Methadone, EDDP, Buprenorphine, Amphetamine, Methamphetamine, 3,4-MDA, 3,4-MDE, 3,4-MDMA, MBDB</i>	50	GC49010
GC-MS	Drugs of Abuse in blood by GC/MS <i>Morphine, Codeine, 6-Monoacetylmorphine, Benzoyllecgonine, Cocaine, Methadone, EDDP, Norbuprenorphine, Buprenorphine, Cocaethylene, Ecgonine Methyl Ester</i>	50	GC89010
GC, GC-MS	Ethanol on whole blood by detector FID and/or MS-headspace	100	GC73010
GC, GC-MS	Ethanol in plasma by detector FID and/or MS-headspace	100	GC73110
GC-MS	Methadone and EDDP in urine by detector MS	50	GC48010
GC-MS	Norbuprenorphine in urine by detector MS	50	GC44010
GC-MS	Opiates in urine by detector MS <i>Morphine, Codeine, Dihydrocodeine, Ethylmorphine, 6-Monoacetylmorphine</i>	50	GC45010
GC-MS	THC in blood by GC/MS <i>Delta-9-THC, Delta-9-THC-COOH, 11-OH-THC</i>	50	GC90010
LC-MS/MS	Drugs of Abuse in hair by LC/MS <i>Morphine, Codeine, 6-MAM, Ethylmorphine, Cocaine, Benzoyllecgonine, Ecgonine Methyl Ester, Cocaethylene, Methadone, EDDP, Buprenorphine, Amphetamine, Methamphetamine, 3,4-MDA, 3,4-MDE, 3,4-MDMA, Norbuprenorphine, MBDB, Ketamine</i>	50	LC49010
UHPLC-MS/MS	Drugs of Abuse in hair by LC/MS - ULTRA FAST	50	LC49010#UF
LC-MS/MS	Delta-9-THC in hair by LC/MS	50	LC53010
UHPLC-MS/MS	Delta-9-THC in hair by LC/MS - ULTRA FAST	50	LC53010#UF
LC-MS/MS	Drugs of Abuse in urine by LC/MS <i>Morphine, Dihydrocodeine, Codeine, 6-MAM, Ethylmorphine, 3,4-MDA, 3,4-MDE, 3,4-MDMA, Beg, Cocaine, Methadone, Ketamine, Amphetamine, Methamphetamine, delta-9-THC-COOH, Norbuprenorphine, Buprenorphine, EDDP, Cocaethylene, Ephedrine, Pseudoephedrine, Norpseudoephedrine, MBDB</i>	100	LC74010#UF
UHPLC-MS/MS	Drugs of Abuse in urine by LC/MS - ULTRA FAST	50	LC89010#UF
UHPLC-MS/MS	Drugs of Abuse in whole blood by LC/MS - ULTRA FAST <i>Morphine, Codeine, 6-Monoacetylmorphine, 3,4-MDA, 3,4-MDE, 3,4-MDMA, Benzoyllecgonine, Cocaine, Methadone, EDDP, Amphetamine, Metamphetamine, Norbuprenorphine, Buprenorphine, Cocaethylene, MBDB, Ecgonine Methyl Ester, Delta-9-THC, Delta-9-THC-COOH, 11-OH-THC</i>	50	LL89010
LC-MS/MS	Drugs of Abuse (basic) in whole blood by LC/MS <i>Morphine, Codeine, 6-Monoacetylmorphine, 3,4-MDA, 3,4-MDE, 3,4-MDMA, Benzoyllecgonine, Cocaine, Methadone, EDDP, Amphetamine, Metamphetamine, Norbuprenorphine, Buprenorphine, Cocaethylene, MBDB, Ecgonine Methyl Ester</i>	50	LL90010
LC-MS/MS	THC in blood by LC/MS <i>Delta-9-THC, Delta-9-THC-COOH, 11-OH-THC</i>	50	LL90010
LC-MS/MS	Ethylglucuronide and Ethylsulfate in urine by LC/MS	100	LC78010
LC-MS/MS	Ethylglucuronide in hair by LC/MS	50	LC95010
LC-MS/MS	Fast Toxicological Screening kit	200	SC9000
HPLC	CDT (Carbohydrate-Deficient Transferrin) Test in serum by UV/VIS	100	Z68010
HPLC	CDT (Carbohydrate-Deficient Transferrin) Test in serum by UV/VIS - FAST	100	Z68110
HPLC	CDT (Carbohydrate-Deficient Transferrin) Test in serum by UV/VIS - FAST	500	Z68115



Chromatogram of Drugs of Abuse in hair by LC/MS- LC49010
Retention Time (min): Morphine 1.3, Codeine 4.2, 6-MAM 4.6 , Cocaine 6.3, BEG 5.7, Cocaethylene 4.5, Ecgonine Methyl Ester 0.4, Amphetamine 4.3, Methamphetamine 4.5, MDA 4.5 , MDMA 4.7, MDE 5.2 , MBDB 5.7, Ketamine 5.8, Norbuprenorphine 6.7 , Buprenorphine 6.6, Methadone 6.9, EDDP 6.6

Occupational Toxicology

	DESCRIPTION	N. TESTS	CODE
GC, GC-MS	Butyl Acetate in urine by detector FID and/or MS	100	GC01010
GC-MS	Carbon Tetrachloride in urine by detector MS-head space	100	GC17510
GC, GC-MS	trans-1,2-Cyclohexanediol in urine by detector FID and/or MS	100	GC19310
GC-MS	Diethylketone in urine by detector MS-head space	100	GC11010
GC, GC-MS	Ethyl Acetate in urine by detector FID and/or MS	100	GC01510
GC-MS	Formic Acid in urine by detector MS-head space	100	GC74010
GC, GC-MS	Isobutyl Acetate in urine by detector FID and/or MS	100	GC02010
GC, GC-MS	Methyl Acetate in urine by detector FID and/or MS	100	GC02510
GC-MS	Methylene Chloride (Dichloromethane) in urine by detector MS-head space	100	GC18010
GC-MS	Methyl-Isobutylketone in urine by detector MS-head space	100	GC10510
GC-MS	Methyltrichloroacetate in urine by detector MS-head space	100	GC15510
GC-MS	Tetrachloroethylene in urine by detector MS-head space	100	GC15010
GC, GC-MS	Trichloroacetic Acid in urine by detector ECD and/or MS-head space	100	GC17010
GC-MS	Trichloroethane in urine by detector MS-head space	100	GC16010
GC-MS	Trichloroethanol in urine by detector MS	100	GC16510
GC-MS	Trichloroethylene in urine by detector MS-head space	100	GC16110
HPLC	Acetaldehyde in urine by UV	100	Z66010
HPLC	Acetone in urine by UV	100	Z42010
HPLC	Formaldehyde in urine by UV	100	Z65010
HPLC	Free 2,5 Hexanedione in urine by Fluorimetry	100	Z05510
HPLC	Total 2,5 Hexanedione in urine by UV	100	Z05010
HPLC	Hippuric Acid/o-m-p-Methylhippuric Acids in urine by UV - FAST	100	Z06110
HPLC	1-Hydroxypyrene in urine by Fluorimetry - FAST	100	Z38110
HPLC	Methanol in urine by UV	100	Z05610
HPLC	Methyl-Ethyl-Keton in urine (M.E.K.) by UV	100	Z24010
HPLC	trans,trans-Muconic Acid (ttMA) in urine by UV - FAST	100	Z23210
HPLC	o-Cresol and Phenol in urine by Fluorimetry - FAST	100	Z55110
HPLC	o-Cresol in urine by Fluorimetry - FAST	100	Z40110
HPLC	Phenol in urine by Fluorimetry - FAST	100	Z27610
HPLC	S-phenylmercapturic Acid in urine by Fluorimetry	100	Z23110
HPLC	Phenylglyoxilic Acid/Mandelic Acid in urine by UV - FAST	100	Z07110
HPLC	Phenylglyoxilic/Mandelic/Hippuric/o-m-p-Methylhippuric Acids in urine by UV - FAST	100	Z06610
HPLC	Differentiated Porphyrins in urine by Fluorimetry <i>Uroporphyrin I, Heptacarboxiporphyrin, Hexacarboxiporphyrin, Pentacarboxiporphyrin, Coproporphyrin I and Coproporphyrin III. This test needs a binary gradient pump</i>	100	Z73010
HPLC	Free Eritrocitary Protoporphyrin IX and ZnPP in whole blood by Fluorimetry	100	Z39010



The widest range of complete ready to use kits with lyophilized calibrators and controls

Manufactured by **EUREKA LAB DIVISION S.r.l.**, Via Enrico Fermi, 25 60033 Chiaravalle Ancona - taly

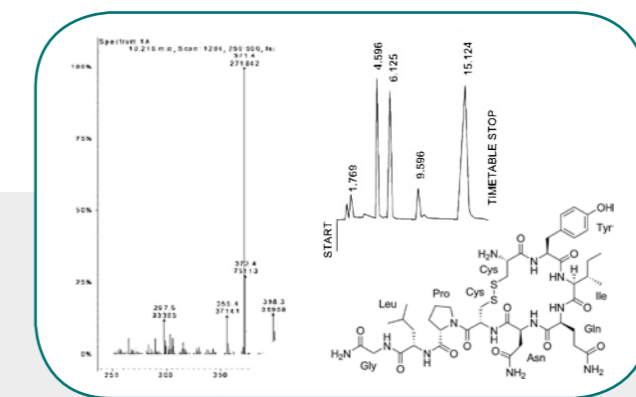


ALIFAX S.r.l.

Via F. Petrarca, 2/1, 35020 Polverara, Padova, ITALY. Tel. +39 049 0992000 info@alifax.com - www.alifax.com
Entered in Padova companies register N° 04337640280. Company stock € 10.000.000 entirely deposited Company with single partner and subjected to direction and coordination of Alifax Holding S.p.A.

Rev. 08/11/16

Due to regulatory requirements, the products listed herein are available for sale in any relevant Country territory provided that they have been registered according to the applicable domestic law. The products listed herein may have incurred changes with respect to the last available edition.



CE/IVD Ready to use kits for GC, HPLC and MS

DISTRIBUTED IN SPAIN BY:



inf@ingenieria-analitica.com - www.ingenieria-analitica.com - Ph. (+34)902456677

Believe in Innovation

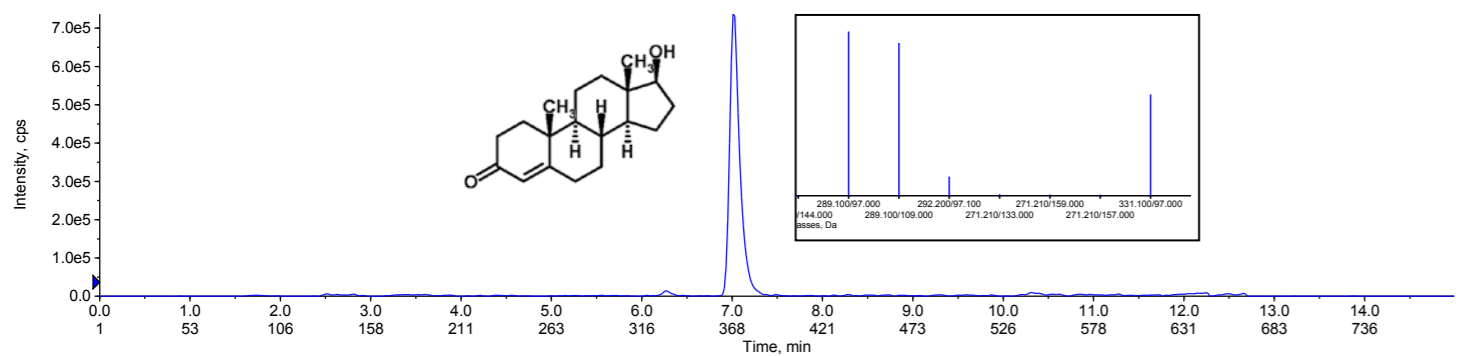
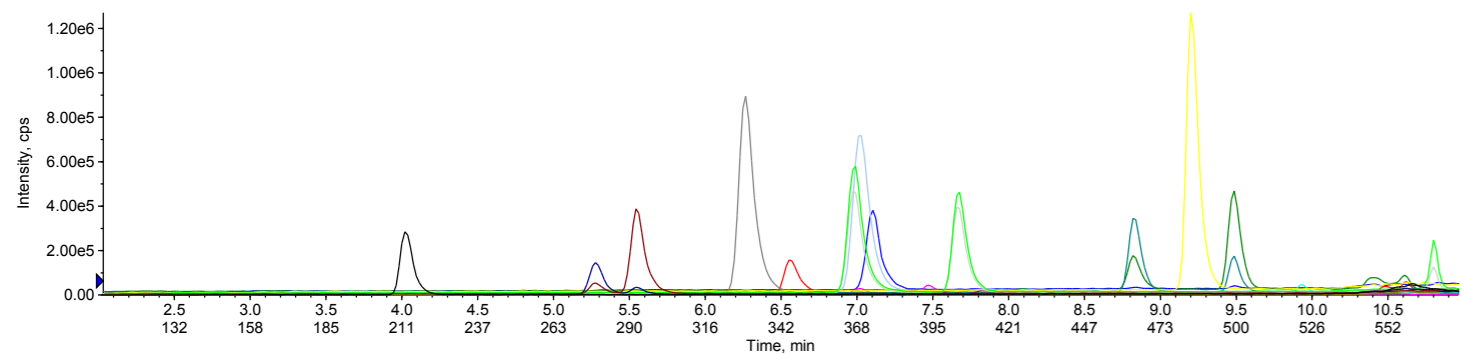
Ready to use kits for Chromatography and Mass Spectrometry

- The widest range of ready to use kits among Clinical Chemistry, Pharmacology, and Toxicology
- Complete ready to use kit with calibrators
- Lyophilized calibrators and controls
- Deuterated Internal Standards
- Simple sample preparation
- Hands-on time and exposure reduction
- High sensitivity and reproducibility
- 90-100% recovery of analytes
- 3 years shelf life
- Fully compatible with any instrumentations on the market
- Standardized method for proficiency inter-laboratory testing programs (Round robin)
- Harmonization of results vs. immunochemistry values
- CE/IVD Marked



LABORATORY TOTAL SOLUTION

Total turn key solution including brand new or pre-owned GC, GC/MS, UHPLC and LC/MS systems. Special Financial Benefits with Reagent Rental, Lease Instrumentation, Application-Hardware and Software on-site training.



Chromatogram of Steroid Hormones in serum by LC/MS - Complete kit - LC72310

Retention time (min): Cortisol: 4.0, Corticosterone: 5.3, 11-Deoxycortisol: 5.7, Androstenedione: 6.4, Estrone 6.6, 11-Deoxycorticosterone: 6.9, Testosterone: 7.0, Estradiol: 7.1, DHEA: 7.5, 17-Hydroxy-Progesterone: 7.8, 17-Hydroxy-Pregnenolone: 7.8, DHT: 8.0, Progesterone: 9.2, Androsterone: 9.5, Pregnenolone: 9.9

Clinical Chemistry

DESCRIPTION	N. TESTS	CODE
Biogenic Amines		
HPLC Catecholamines in urine and in plasma - Dual kit by Fluorimetry - FAST	100	Z10650
HPLC Free Catecholamines in plasma by Fluorimetry - FAST	100	Z25610
HPLC Free Catecholamines in urine by Fluorimetry - FAST	100	Z10610
HPLC Free Catecholamines in urine with resin by Fluorimetry - FAST	100	Z10710
HPLC Free Metanephrines in urine by Fluorimetry - FAST	100	Z12710
HPLC Free VMA/5-HIAA/HVA in urine by Fluorimetry - FAST	100	Z14610
HPLC Serotonin in serum by Fluorimetry - FAST	100	Z15110
HPLC Serotonin in urine by Fluorimetry - FAST	100	Z15610

DESCRIPTION	N. TESTS	CODE
Endocrinology		
LC-MS/MS Cortisol and Cortisone in urine by LC/MS	100	LC91010
LC-MS/MS Glucocorticoids in serum by LC/MS	50	LC71010
<i>Pregnenolone, 17-Hydroxy-Pregnenolone, 17-Hydroxy-Progesterone, 11-Deoxycortisol, Cortisol</i>		
UHPLC-MS/MS Glucocorticoids in serum by LC/MS - ULTRA FAST	50	LC71010#UF
LC-MS/MS Mineralcorticoids in serum by LC/MS	50	LC72010
<i>Pregnenolone, Progesterone, 11-Deoxycorticosterone, Corticosterone, Aldosterone</i>		
UHPLC-MS/MS Mineralcorticoids in serum by LC/MS - ULTRA FAST	50	LC72010#UF
LC-MS/MS Sexual Hormones in serum by LC/MS	50	LC72110
<i>Pregnenolone, 17-Hydroxy-Pregnenolone, Dehydroepiandrosterone DHEA, Dehydroepiandrosterone Sulfate DHEAS, Androstenedione, Testosterone, Estradiol, Dihydrotestosterone, Androsterone, Estrone</i>		
UHPLC-MS/MS Sexual Hormones in serum by LC/MS - ULTRA FAST	50	LC72110#UF
LC-MS/MS Steroid Hormones in serum by LC/MS - Complete kit	50	LC72310
<i>Dihydrotestosterone, Androsterone, Estrone, Testosterone, Estradiol, Androstenedione, Pregnenolone, 17-Hydroxy-Pregnenolone, Dehydroepiandrosterone (DHEA), Dehydroepiandrosterone Sulfate (DHEAS), Progesterone, 11-Deoxycorticosterone, Corticosterone, Aldosterone, 17-Hydroxy-Progesterone, 11-Deoxycortisol, Cortisol</i>		
UHPLC-MS/MS Steroid Hormones in serum by LC/MS - Complete kit - ULTRA FAST	50	LC72310#UF
LC-MS/MS Steroid Hormones in serum by LC/MS - Complete kit	500	LC72315
UHPLC-MS/MS Steroid Hormones in serum by LC/MS - Complete kit - ULTRA FAST	500	LC72315#UF

DESCRIPTION	N. TESTS	CODE
Metabolic Diseases / Renal Function		
GC-MS Differentiated Fatty Acids in plasma by detector MS	100	GC75010
<i>Myristic Acid C14:0, Palmitic Acid C16:0, Stearic Acid C16:0, Oleic Acid C18:1-cis (omega 9), Linoleic Acid C18:2-cis (omega 6), alpha-Linoleic Acid C18:3 (omega 3), gamma-Linoleic Acid C18:3(omega 6), di-homogammalinoleic Acid C20:3 (omega 6), Arachidonic Acid C20:4 (omega 6), DHA C22:6 (omega 3), Elaidic Acid C18:1-trans(omega 9), Linoleaidic Acid C18:2-trans (omega 6)</i>		
HPLC ADMA in serum and/or in plasma by Fluorimetry	100	Z58010
<i>Asymmetric Dimethylarginine, Symmetric Dimethylarginine, Total Arginine</i>		
HPLC Citrates in urine by UV	100	Z32210
HPLC Citrates in serum by UV	100	Z32310
HPLC Citrates in serum and in urine - Dual kit by UV	100	Z32410
HPLC Free Carnitine in plasma by Fluorimetry	100	Z13010
HPLC Homocysteine and Cysteine in plasma by Fluorimetry - FAST	100	Z09610
HPLC Homocysteine and Cysteine in plasma by Fluorimetry - FAST	500	Z09710
HPLC Homocysteine and Cysteine in plasma by Fluorimetry - FAST	1000	Z09810
HPLC Hydroxyproline in urine by UV/VIS - FAST	100	Z01610
HPLC Hydroxyproline in urine by Fluorimetry - FAST	100	Z12610
HPLC Oxalate in urine by UV and/or by Fluorimetry - FAST	100	Z32610

DESCRIPTION	N. TESTS	CODE
Oxidative Stress		
LC-MS/MS Homocysteine in plasma by LC/MS	100	LC09010
LC-MS/MS Homocysteine in plasma by LC/MS	500	LC09015
HPLC Glutathione reduced and total form in whole blood by Fluorimetry	100	Z30010
HPLC 3-Methylindole (Skatole) in urine by Fluorimetry - FAST	100	Z60010
HPLC 3-Nitrotyrosine in plasma by UV - FAST	100	Z61010

DESCRIPTION	N. TESTS	CODE
Vitamins		
LC-MS/MS 25-OH Vitamin D3 and 25-OH Vitamin D2 in plasma by LC/MS - IS not deuterated	100	LC19010
LC-MS/MS 25-OH Vitamin D3 and 25-OH Vitamin D2 in plasma by LC/MS - IS not deuterated	500	LC19015
LC-MS/MS 25-OH Vitamin D3 and 25-OH Vitamin D2 in plasma by LC/MS - IS deuterated	100	LC19110
LC-MS/MS 25-OH Vitamin D3 and 25-OH Vitamin D2 in plasma by LC/MS - IS deuterated	500	LC19115
HPLC 25-OH-Vitamin D3 and 25-OH-Vitamin D2 in plasma by UV - FAST	100	Z19710
HPLC 25-OH-Vitamin D3/D2 in plasma by UV - FAST - reduced volume	100	Z19810
HPLC Vitamis A/E in plasma by UV - FAST	100	Z18610
HPLC Vitamin B1 in whole blood by Fluorimetry - FAST	100	Z85010
HPLC Vitamin B2 in whole blood by Fluorimetry - FAST	100	Z85110
HPLC Vitamin B6 in whole blood by Fluorimetry - FAST	100	Z85610
HPLC Beta-Carotene and Lycopene in plasma by UV/VIS - FAST	100	Z64010
HPLC Coenzyme Q10 in plasma by UV	100	Z63010
HPLC Pyridinium Cross-Links in urine by Fluorimetry - FAST	100	Z29610
HPLC Vitamin C in plasma by UV	100	Z20010

Clinical Pharmacology

DESCRIPTION	N. TESTS	CODE
Antiepileptics		
LC-MS/MS Antiepileptics in serum and/or in plasma by LC/MS	100	LC04910
<i>Phenobarbital, Phenytoin, Carbamazepine, Ethosuximide, Primidone, Lamotrigine, Phelbamate, 10,11-Dihydro-10-Hydroxycarbazepine, Carbamazepine-epoxide, Oxcarbazepine, Lacosamide, Rufinamide, Desmethylsuximide, Metosuximide, Levetiracetam, Zonisamide, Topiramate, Valproic Acid</i>		
UHPLC-MS/MS Antiepileptics in serum and/or in plasma by LC/MS - ULTRA FAST	100	LC04910#UF
LC-MS/MS Antiepileptics in serum and/or in plasma by LC/MS	500	LC04915
UHPLC-MS/MS Antiepileptics in serum and/or in plasma by LC/MS - ULTRA FAST	500	LC04915#UF
LC-MS/MS Antiepileptics in serum and/or in plasma by LC/MS - Internal Std Deuterated	100	LC05010
UHPLC-MS/MS Antiepileptics in serum and/or in plasma by LC/MS - Internal Std Deuterated - ULTRA FAST	100	LC05010#UF
LC-MS/MS Antiepileptics in serum and/or in plasma by LC/MS - Internal Std Deuterated	500	LC05015
UHPLC-MS/MS Antiepileptics in serum and/or in plasma by LC/MS - Internal Std Deuterated - ULTRA FAST	500	LC05015#UF
HPLCHPLC Antiepileptics 1 in serum and/or in plasma by UV - FAST	100	Z80010
<i>Phenobarbital, Phenytoin and Carbamazepine</i>		
HPLCHPLC Antiepileptics 2 in serum and/or in plasma by UV	100	Z04110
<i>Ethosuximide, Primidone, Lamotrigine and Phelbamate</i>		
HPLCHPLC Antiepileptics 3 in serum and/or in plasma by UV - FAST	100	Z82010
<i>Ethosuximide, Primidone, Lamotrigine, Phelbamate, 10,11-Dihydro-10-Hydroxycarbazepine, Carbamazepine-epoxide, Oxcarbazepine</i>		
HPLC Antiepileptics 4 in serum and/or in plasma by UV - FAST	100	Z83010
<i>Lamotrigine, Zonisamide, 10,11-Dihydro-10-Hydroxycarbazepine</i>		
HPLC Antiepileptics 5 in serum and/or in plasma by UV - FAST	100	Z83110
<i>Lacosamide, Rufinamide, Desmethylsuximide, Methsuximide, Phenytoin</i>		
HPLC Lamotrigine in serum and/or in plasma by UV	100	Z03010
HPLC Lamotrigine and 10,11-Dihydro-10-Hydroxycarbazepine in serum and/or in plasma by UV	100	Z04210
HPLC Levetiracetam in plasma by UV - FAST	100	Z84010
HPLC Perampanel in plasma by Fluorimetry - FAST	100	Z79210
HPLC Topiramate in plasma by Fluorimetry	100	Z77010
HPLC Valproic Acid in plasma by UV	100	Z05110

DESCRIPTION	N. TESTS	CODE
Antiarrhythmics		
HPLC Amiodarone/Desethylamiodarone in serum and/or in plasma by UV - FAST	100	Z33610
HPLC Antiarrhythmics in plasma by UV - FAST	100	Z78010
<i>Flecainide, Propafenone, Verapamil</i>		

DESCRIPTION	N. TESTS	CODE
Psychoactive Drugs		
LC-MS/MS Benzodiazepines in serum by LC/MS	100	LC80010
<i>Bromazepam, Lorazepam, Clonazepam, Flunitrazepam, Chlordemethyldiazepam, Nordiazepam, Clobazam, Diazepam, Midazolam, Nitrazepam</i>		
HPLC Benzodiazepines 1 in serum and/or in plasma by UV	100	Z34010
<i>Bromazepam, Lorazepam, Clonazepam, Flunitrazepam, Chlordemethyldiazepam</i>		
HPLC Benzodiazepines 2 in serum and/or in plasma by UV	100	Z35010
<i>Nordiazepam, Clobazam, Diazepam, Midazolam</i>		
HPLC Clozapine/Norclozapine in serum and/or in plasma by UV - FAST	100	Z76610
HPLC Tricyclic Antidepressants in serum and/or in plasma by UV	100	Z56010
<i>Nordoxepine, Desipramine, Imipramine, Doxepine, Amitriptiline and Nortriptiline</i>		

DESCRIPTION	N. TESTS	CODE
Immunosuppressants		
LC-MS/MS Immunosuppressants in whole blood by LC/MS	100	LC75110
<i>Mycophenolic Acid, Tacrolimus, Sirolimus, Everolimus, Cyclosporin A</i>		
UHPLC-MS/MS Immunosuppressants in whole blood by LC/MS - ULTRA FAST	100	LC75110#UF
LC-MS/MS Immunosuppressants in whole blood by LC/MS	500	LC75115
UHPLC-MS/MS Immunosuppressants in whole blood by LC/MS - ULTRA FAST	500	LC75115#UF
LC-MS/MS Immunosuppressants in whole blood by LC/MS - Internal Std Deuterate	100	LC75210
UHPLC-MS/MS Immunosuppressants in whole blood by LC/MS - Internal Std Deuterate - ULTRA FAST	100	LC75210#UF
LC-MS/MS Immunosuppressants in whole blood by LC/MS - Internal Std Deuterate	500	LC75215
UHPLC-MS/MS Immunosuppressants in whole blood by LC/MS - Internal Std Deuterate - ULTRA FAST	500	LC75215#UF
HPLC Mycophenolic Acid in serum and/or in plasma by UV - FAST	100	Z01960

DESCRIPTION	N. TESTS	CODE
Antibiotics		
LC-MS/MS Antibiotics in plasma by LC/MS	100	LC79010
<i>Daptomycin, Vancomycin, Streptomycin, Linezolid, Levofloxacin, Ciprofloxacin, Gentamicin, Amikacin, Teicoplanin</i>		
UHPLC-MS/MS Antibiotics in plasma by LC/MS - ULTRA FAST	100	LC79010#UF

DESCRIPTION	N. TESTS	CODE
Antimycotics		
HPLC Antimycotics in plasma by Fluorimetry - FAST	100	Z79010
<i>Itraconazol, Posaconazol, Voriconazol, Hydroxyitraconazol</i>		

DESCRIPTION	N. TESTS	CODE
Diabetes		
HPLC Metformine in serum by UV/VIS - FAST	100	Z88110

DESCRIPTION	N. TESTS	CODE
Antineoplastic		
LC-MS/MS 5-Fluorouracil on PBMC in LC/MS	100	LC85010
LC-MS/MS Tamoxifen/Endoxifen in plasma in LC/MS	100	LC92010