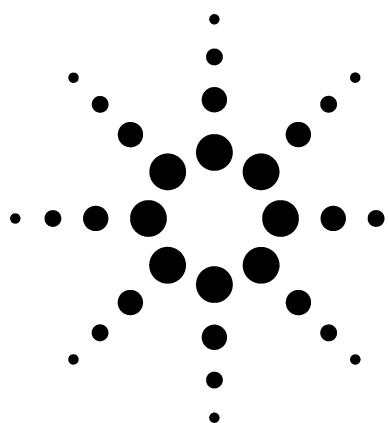


# Application 159-00

## Agilent Reformulated Fuel Analyzer

Analysis of Benzene and Toluene in Gasoline  
According to ASTM D3606



### Technical Overview

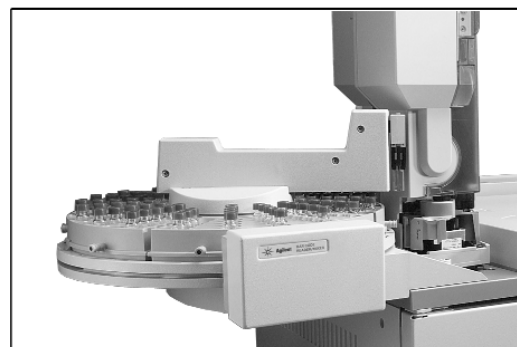


### Application Highlights

- Thermal Conductivity Detector (TCD) performs as per ASTM D3606 specifications
- Analysis time: approximately 15 minutes
- Both standard and modified column sets available

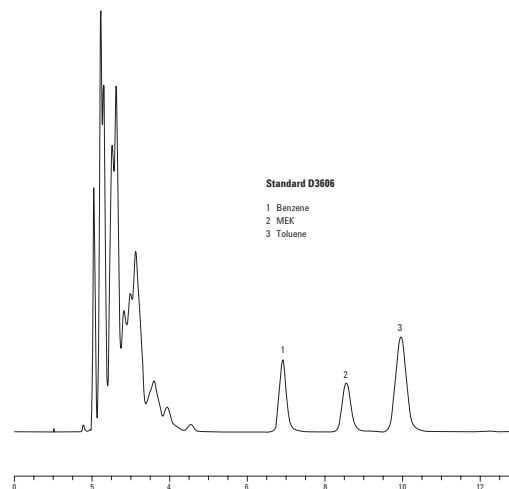
### Optional Configurations

- ASTM D3606/ASTM D4815
- ASTM D3606/ASTM D5580
- ASTM D3606/ASTM D4815/ASTM D5580
- ASTM D3606/ASTM D5599
- ASTM D4815/ASTM D5580
- ASTM D5769/ASTM D3606
- ASTM D5769/ASTM D4815
- ASTM D5769/ASTM D5580
- ASTM D5769/ASTM D4815/ASTM D5580
- ASTM D5769/ASTM D3606/ASTM D4815/ASTM D5580
- ASTM D5769/ASTM D5599
- ASTM D5769/ASTM D5599/ASTM D3606



### For More Information

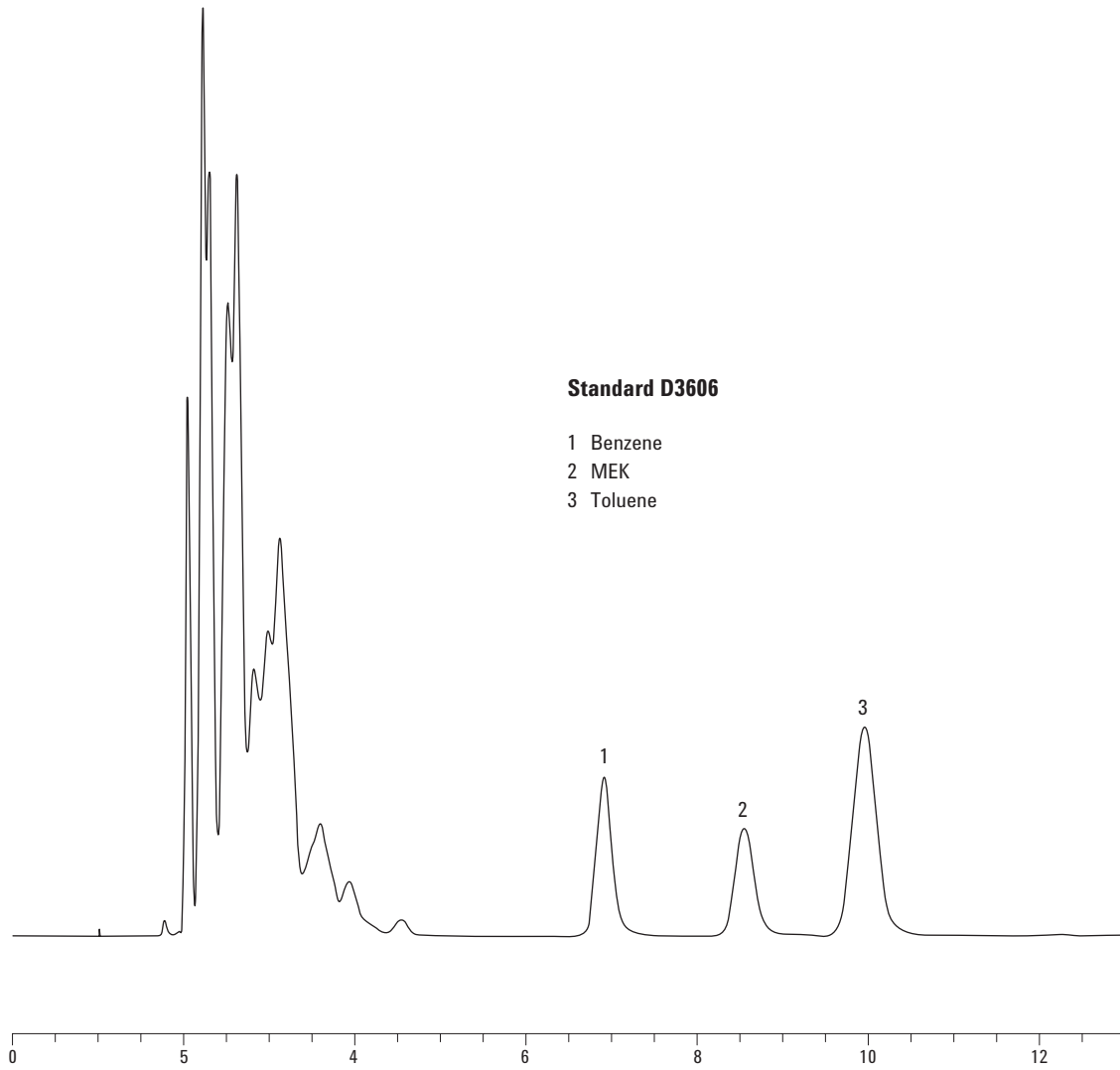
For more information on our products and services, visit our Web site at [www.agilent.com/chem](http://www.agilent.com/chem).



Agilent Technologies



WASSON ECE  
INSTRUMENTATION



**TCD output from the Agilent reformulated fuel analyzer.**

Agilent shall not be liable for errors contained herein or for incidental or consequential damages in connection with the furnishing, performance, or use of this material.

Information, descriptions, and specifications in this publication are subject to change without notice.

© Agilent Technologies, Inc. 2002

Printed in the USA  
December 3, 2002  
5988-6726EN