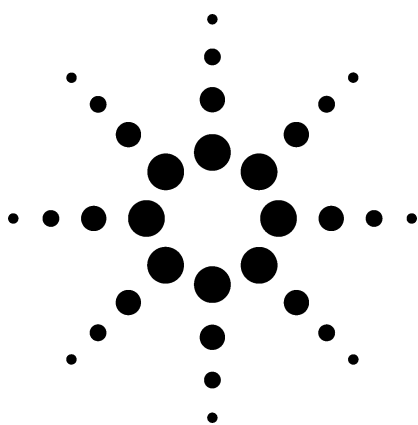


# Application 241-00

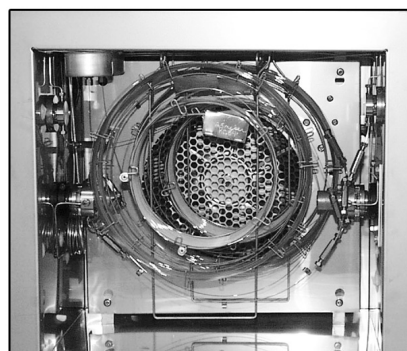
## Agilent Natural Gas/Sulfur Analyzer

### Technical Overview



### Application Highlights

- A Flame Photometric Detector (FPD) to determine hydrogen sulfide, carbonyl sulfide, methyl mercaptan, and ethyl mercaptan to a lower detection limit of 0.5 ppm.
- A Thermal Conductivity Detector (TCD) to identify isobutane, n-butane, isopentane, n-pentane, propane, ethane, hydrogen sulfide, oxygen/argon composite, nitrogen, methane, and carbon monoxide with an initial composite C6+ backflush to detector. The lower detection limit on the TCD is 200 ppm.
- Approximate analysis time on the FPD is 15 minutes, and on the TCD is 25 minutes.

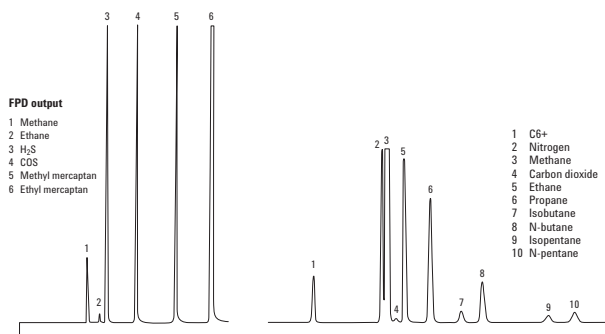


### Optional Configurations

- Detailed hydrocarbon analysis of extended natural gas
- TCD/FID/FPD or TCD/FID/SCD for extended natural gas with trace sulfur analysis
- TCD/FCD/FID for extended natural gas with helium or hydrogen

### For More Information

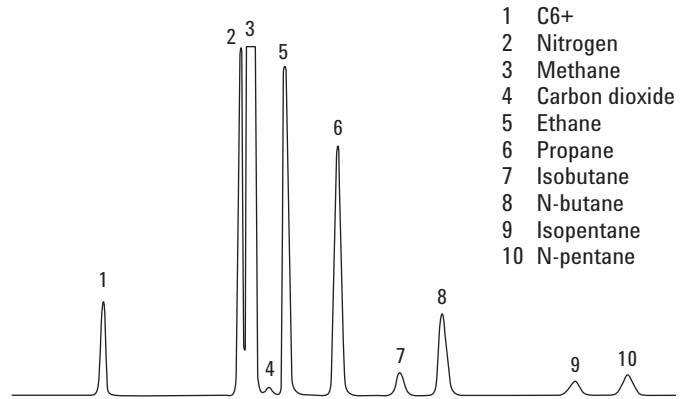
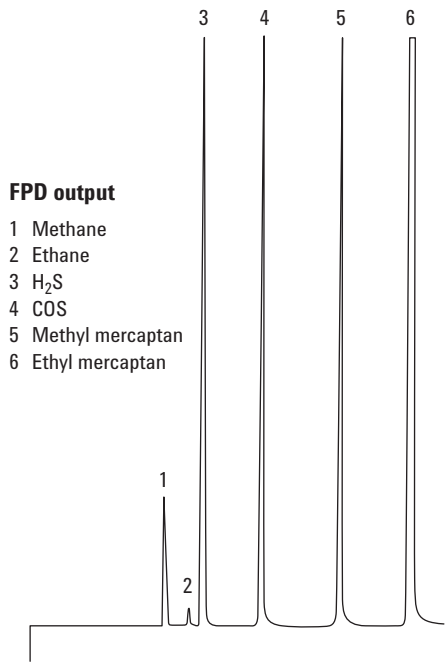
For more information on our products and services, visit our Web site at [www.agilent.com/chem](http://www.agilent.com/chem).



Agilent Technologies



WASSON·ECE  
INSTRUMENTATION



FPD output from the Agilent natural gas/sulfur analyzer.

Agilent shall not be liable for errors contained herein or for incidental or consequential damages in connection with the furnishing, performance, or use of this material.

Information, descriptions, and specifications in this publication are subject to change without notice.

© Agilent Technologies, Inc. 2002

Printed in the USA  
December 3, 2002  
5988-6730EN