



DECADE Elite™ Electrochemical Detector

- Fits any UHPLC
- ADF (low pass filter) to improve S/N ratio
- DC, pulse and scan mode
- Unprecedented sensitivity

Highest sensitivity

The DECADE Elite detector offers flexibility and stable working conditions for all applications using Electrochemical Detection (ECD). It has a highly stable Faraday-shielded oven compartment accommodating the column and the electrochemical flow cell, to guarantee highest stability. To achieve unprecedented sensitivity in UHPLC/ECD the detector is equipped with a unique ADF filter to assure lowest noise level. Limits of detection (LOD) better than 0.5 fmol on-column are achieved routinely.

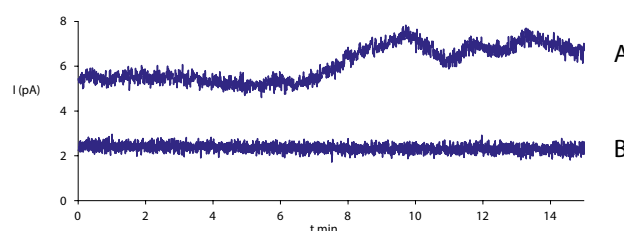
Flexibility and versatility

The DECADE Elite has a potential range of up to ± 2.5 V for optimal use of Magic Diamond™ (boron doped diamond) electrodes and can control up to 4 flow cells. They can be used in a parallel or serial configuration. The flow cells are known for their robustness, ease in maintenance and come with a 5 years warranty for GC electrodes. The DC mode is used for many high sensitivity applications such as neurotransmitters, vitamins, phenols, etc. The pulse mode is important for PAD (Pulsed Amperometric Detection) used in the detection of carbohydrates. The scan mode is used to obtain a voltammogram in method optimization.



Integrated Temperature control

Baseline without temperature control (A) and baseline of DECADE Elite with temperature control (B). Separation and Detection in one compartment.



DECADE Elite™ for Agilent UHPLC

The DECADE Elite can be used with any HPLC & UHPLC system such as Agilent 1290 to perform LC/ECD within a few hours after installation.

Data acquisition uses an AD board input connected to the DECADE Elite 20-bit analog Output. For instrument control the keyboard can be used or the free Dialogue software is available



SenCell™

High sensitivity Wall Jet Flow Cell

- Highest sensitivity
- Adjustable volume/spacing
- Fast stabilization
- 5 years warranty



The SenCell is a new generation electrochemical flow cell specifically designed for highest sensitivity. The tool free assembly and the continuously adjustable working volume guarantee ease of use and fast noise stabilization. The volume of the cell can be adjusted between 0 and 300 nL.

Reference Electrodes

HyREF (Pd/H₂) – black, ISAAC (In Situ Ag/AgCl) – green, Salt Bridge (Ag/AgCl) – blue

FlexCell

The most versatile flow cell for Electrochemical Detection

- Exchangeable working electrode
- Working Electrodes: GC, Pt, Au, Ag, Cu, MD
- Low cost of ownership

The name FlexCell underlines the versatility and serviceability of this thin-layer flow cell in the Antec program. With its unrivaled design working electrodes can be serviced or replaced in a few minutes. The low cost of ownership is also attributed to the concept that different working electrode materials can be applied in the same cell. This makes the Flexcell suitable for all sorts of electrochemical analyses like the usual biogenic amines (glassy carbon), but also carbohydrates (gold), peroxides (platinum), halides (silver), sulfides (Magic Diamond) etc.




Ingeniería Analítica
Chromatography & Spectrometry

 Agilent Technologies
Channel Partner

Distribuidor:

Ingeniería Analítica SL
inf@ingenieria-analitica.com
www.ingenieria-analitica.com
Tel. (+34)902456677

