

9210p Online Total Organic Carbon Analyzer

Distribuido en España por:

 **Ingeniería Analítica**
Chromatography & Spectrometry

O·Analytical 
a xylem brand

Tel: (+34) 93.590.28.50 Fax: (+34) 93.675.05.16 www.ingenieria-analitica.com inf@ingenieria-analitica.com

Accurate and Dependable Water Quality Monitoring



Developed from over 45 years of TOC (Total Organic Carbon) experience, the 9210p Online TOC Analyzer provides unmatched performance, reliability, ease of use, at a lower cost of ownership to meet your specific water quality standards.

The 9210p provides water and wastewater facilities with a dynamic, real-time analysis of natural organic matter (NOM) levels in influent and effluent streams. Fast, accurate results enable facility operators to rapidly adjust the treatment process and more precisely control coagulation, flocculation, and the formation of disinfection by-products, helping the facility to stay in compliance and reduce costs.

With data that is comparable and consistent with grab samples analyzed with a benchtop system, the 9210p directly measures TOC in a wide variety of complex and ever-changing matrices.

Reliable Data for Regulatory Compliance and Process Control

Designed for continuous monitoring of organic contaminants in water and wastewater streams for regulatory compliance and optimization of the water treatment process, the 9210p is fully compliant with USEPA Method 415.3 and SM 5310C. It combines the robust heated persulfate oxidation method with a patented, solid-state infrared detection technology for unparalleled accuracy and precision across a range of 50 ppb to 250 ppm.

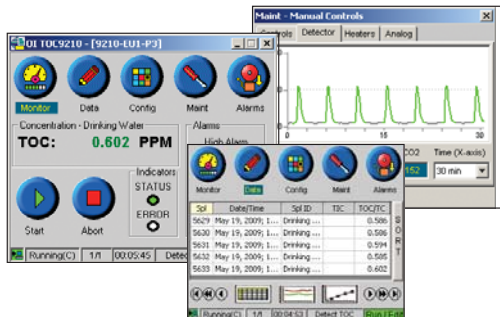
Engineered for operation in process environments, the 9210p requires no external gases, minimal preventative maintenance, and uses standard reagents. Calibration is typically stable for 12 months.

The 9210p is ideal for drinking water, municipal wastewater, surface water, ground water, and other industrial water streams.



Advanced Engineering for Real-time Results

Total Organic Carbon Analysis Made Simple



Intuitive, Easy-to-Use Software

A large, color, touchscreen display with an intuitive, easy-to-use Windows® CE-based user interface simplifies set-up, and access to data, trending, and diagnostic screens. Result data can be output to a PC via Ethernet connection, relay/alarm closure, or as 4-20mA analog signals.

6-port Stream Selector

The capability to handle 6 individual process streams is a standard feature on the 9210p.

Simple Modular Design

Easy to maintain - No need for costly service contracts

Wall-mount Installation Kit and Reagent Rack

Sample Inlets

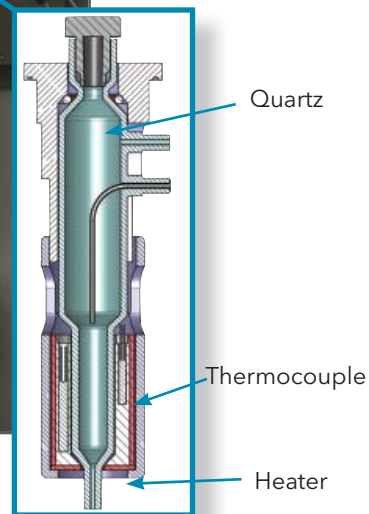
Easily grab a priority sample for lab analysis

Process Gas Module

Generates carrier gas, eliminating the need for external gases

Standard Reagents

No need for expensive, proprietary chemicals



Heater & Thermocouple

Maintains consistent temperature to ensure accurate results

Pictured is the 9210p Online Water Analysis Package, which includes the 9210p Online TOC Analyzer, 6-port stream selector, process gas module, 2 sample inlets, and wall-mount installation kit and reagent rack.

9210p Specifications

Operating Principle	Heated sodium persulfate oxidation
Measurement Technique	Non-dispersive infrared (NDIR) detection
Regulatory Method Compliance	USEPA 415.3 (Source water & drinking water) SM 5310 C (Water & wastewater)
Measurement Ranges (ppm)	0.050 to 25 / 5 to 250 ppm carbon
Calibration	2 point (KHP two standards)
Measurement Accuracy	+5%
Sample Processing / Analysis Time	4 to 9 minute intervals
Operating Environment	5 - 45 °C, up to 90% humidity (non-condensing)
Operator Interface	Windows® CE-based, color touchscreen display
Reagents Required	Sodium persulfate, phosphoric acid
Gas Requirements	< 200 mL/min. 99.99% N ₂ or CO ₂ -free air
Power Requirements	24V _{DC} (Optional 24V _{DC} power supply allows operation with 90-250V _{AC} 50/60Hz source)
Input Relays	2 (remote start, remote stop)
Output Relays	2 (system alarm, sample alarm)
Analog Outputs	2 4-20mA (User-configurable concentrations)
Data Export	To PC via Ethernet, or using a USB memory stick (Microsoft® Excel®-ready .csv file format)
Instrument Enclosure	NEMA 4X / IEC Class IP-56
External Dimensions	48.3 cm H x 31.1 cm W x 31.1 cm D (19 in H x 12.25 in W x 12.25 in D)
Weight	11 kg (24 lbs)
Certifications	CE, EMC EN50082-1, and EN 55011 Group 1 Class A



©2016 Xylem Inc.
 OI Analytical is a trademark of Xylem Inc., or one of its subsidiaries
 Windows is a registered trademark of Microsoft Corp.
 Excel is a registered trademark of Microsoft Corp.



151 Graham Road
 PO Box 9010
 College Station, Texas
 77842-9010
 (979) 690-1711
 (800) 653-1711 USA/Canada
 FAX (979) 690-0440
 www.oico.com
 E-mail: OI-Mail@xylem.com

Accurate TOC Results for your Lab



The Aurora 1030W Laboratory TOC Analyzer (shown with the Model 1088 autosampler) can be used to test grab samples and confirm the calibration of the 9210p Online TOC Analyzer.