

CDSolutions

APPLICATIONS INFORMATION USING ADVANCED SAMPLE HANDLING TECHNOLOGY

Analysis of Gases Produced from the Pyrolysis of Biomass

Most biomass contains both cellulose and lignin, and when pyrolyzed using a capillary GC/MS produces a pyrogram like the one shown in Figure 1. This is a sample derived from pine wood, and the pyrolysis products include compounds from cellulose, like acetic acid and levoglucosan, and phenolics from the lignin such as methoxy phenol and vanillin (see Table 1 on the back).

Both cellulose and lignin produce fixed gases, including methane, carbon monoxide and water, which are difficult to analyze using capillary GC for several reasons. First, they may co-elute as the first peak, making specific identification difficult. Secondly, the masses for such small molecules may not be unique. Mass 28 could indicate nitrogen, carbon monoxide or ethylene. In addition, if a trapping system is being used, to facilitate slow heating, use of a reactor or heating in a reactive atmosphere, the fixed gasses are likely to pass through the trap and be vented instead of being transferred to the GC.

In this analysis, a sample loop was placed after the sorbent trap, which collects the larger pyrolysis products, so that the fixed gases could be collected and transferred to a second GC with a packed column and thermal conductivity detector (TCD). Once the gases are inside the loop, a valve is rotated to flush them to the inlet of the packed column, producing the chromatogram shown in Figure 2. In this way, the effect on the production of these gases caused by changing parameters such as temperature or heating rate can be evaluated.

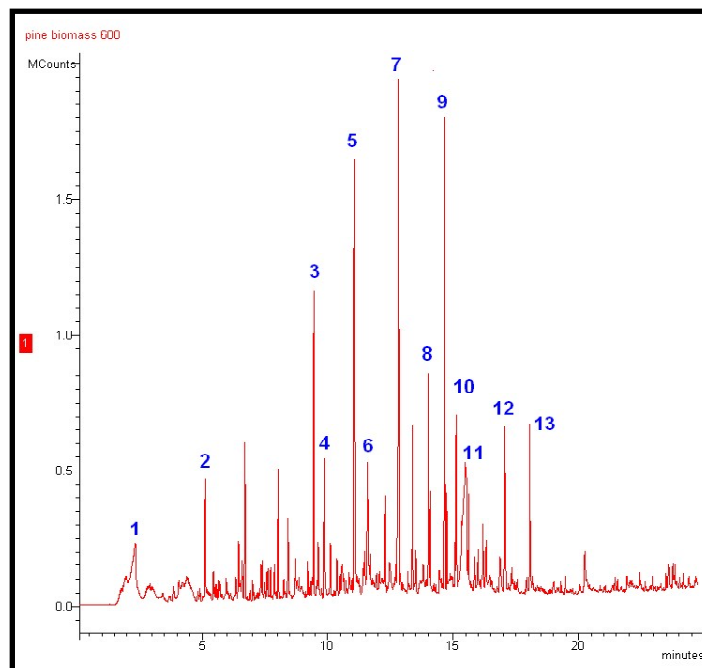


Figure 1. Py-GC/MS of pine wood biomass at 600°C.

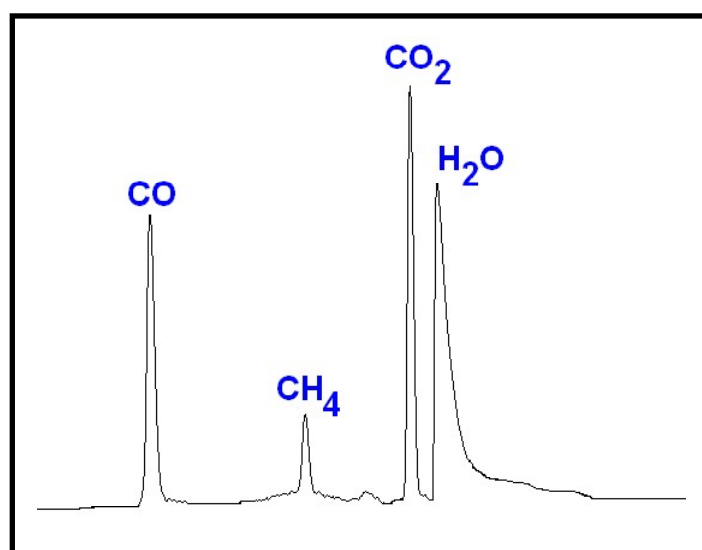


Figure 2. Packed column-TCD analysis of gases from pyrolysis of pine biomass.

ANALYTICAL PARAMETERS

PYROLYSIS

Pyroprobe 5200

Interface: 325°C
Ramp: 10°C/mS
Temperature: 600°C
Time: 15 seconds

CAPILLARY GC/MS

Carrier: He
Column: 5% Phenyl methyl silicone
30 m x 0.25 mm
Split: 50:1
Program: 40°C for 2 minutes
10°C/minute
300°C for 5 minutes

PACKED COLUMN GC/TCD

Column: Carboxen 1000, 60/80 mesh
1/8" x 9'
Carrier: He
Flow: 30 ml/min
Program: 50°C for 4 minutes
30°C/minute
230°C for 8 minutes

TABLE 1

- 1 Acetic acid
- 2 Furfural
- 3 Phenol, 2-methoxy-
- 4 Levoglucosenone
- 5 Phenol, 2-methoxy-4-methyl-
- 6 2-Furancarboxaldehyde, 5-(hydroxymethyl)-
- 7 2-Methoxy-4-vinylphenol
- 8 Vanillin
- 9 Phenol, 2-methoxy-4-(1-propenyl)-, (E)-
- 10 Ethanone, 1-(4-hydroxy-3-methoxyphenyl)-
- 11 1,6-Anhydro- α -D-glucopyranose
(levoglucosan)
- 12 Methyl-(2-hydroxy-3-ethoxy-benzyl)ether
- 13 4-Hydroxy-2-methoxycinnamaldehyde

FOR MORE INFORMATION
CONCERNING THIS APPLICATION,
WE RECOMMEND THE
FOLLOWING READING:

A. A. Boateng, H. G. Jung and P. R. Adler, *Pyrolysis of energy crops including alfalfa stems reed canarygrass and eastern gamagrass*, Fuel 85 (2006) 2450.

Additional literature on this and related applications may be obtained by contacting your local CDS Analytical representative, or directly from CDS at the address below.

CDS Analytical, LLC has been a leader in the design and manufacture of laboratory instruments for sample preparation and analysis since 1969. We are dedicated to providing the best possible instruments for both research and routine analysis. Well known in the field of pyrolysis, CDS manufactures the Pyroprobe® 5000, 5150, 5200 and 5250 autosampler for the introduction and analysis of solid materials by GC, MS and FT-IR. CDS offers a complete line of dynamic headspace instruments for the analysis of volatile organic compounds in environmental, pharmaceutical and food applications, including the model 7000, and models 7300 and 7400 autosamplers. CDS also manufactures the Dynatherm line of thermal desorption instruments including the 9000 series for air monitoring and the 9300 TDA. Our customers, their requirements and applications are important to us. To help meet your needs, we offer a wide range of analytical information and the services of our applications laboratory. If you would like additional information, please contact us at the address below, call us at 1 800 541 6593, or log onto www.cdsanalytical.com.