

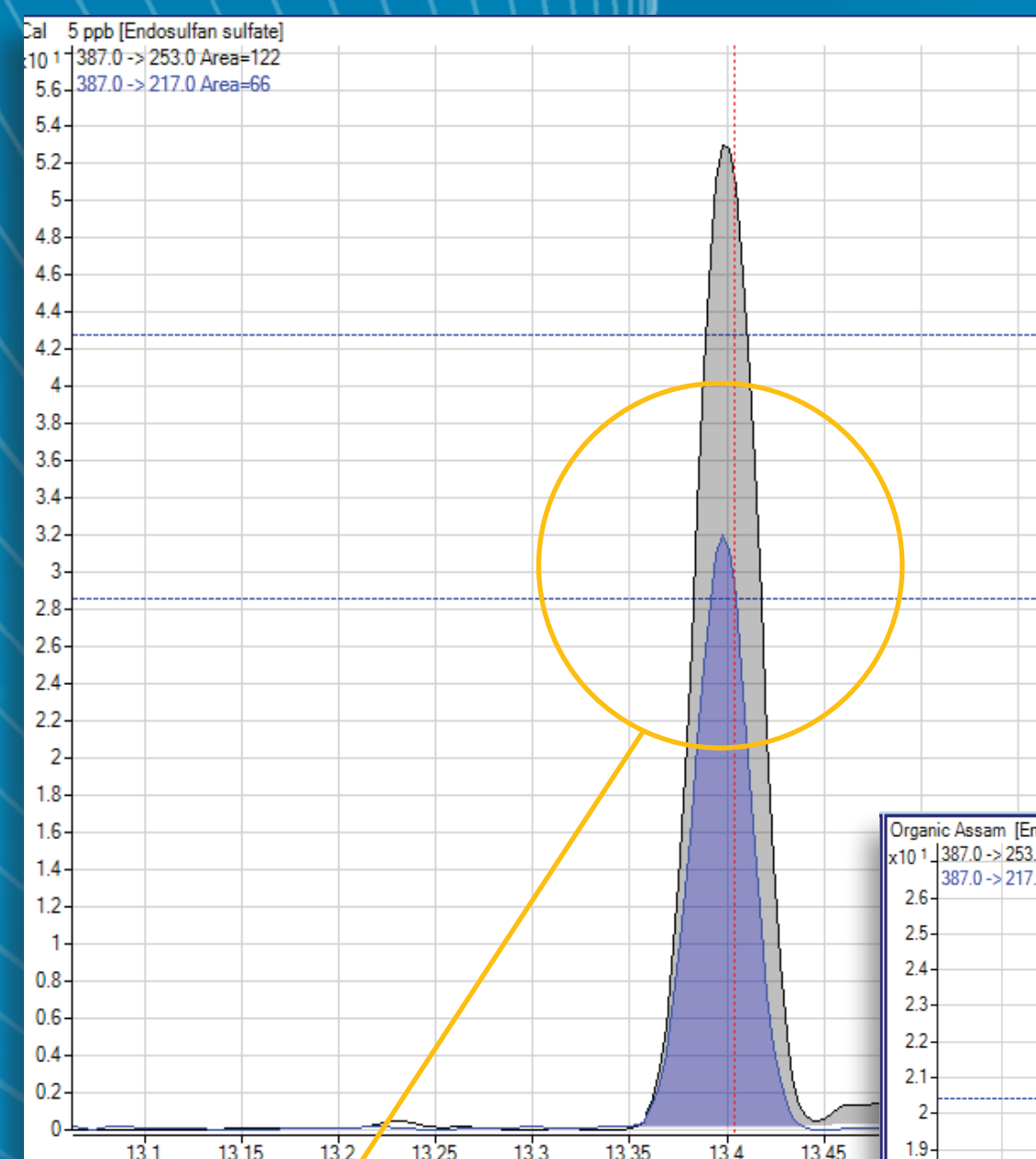
Pesticide and Environmental Pollutant Analyzer 2.0

CONFIRM

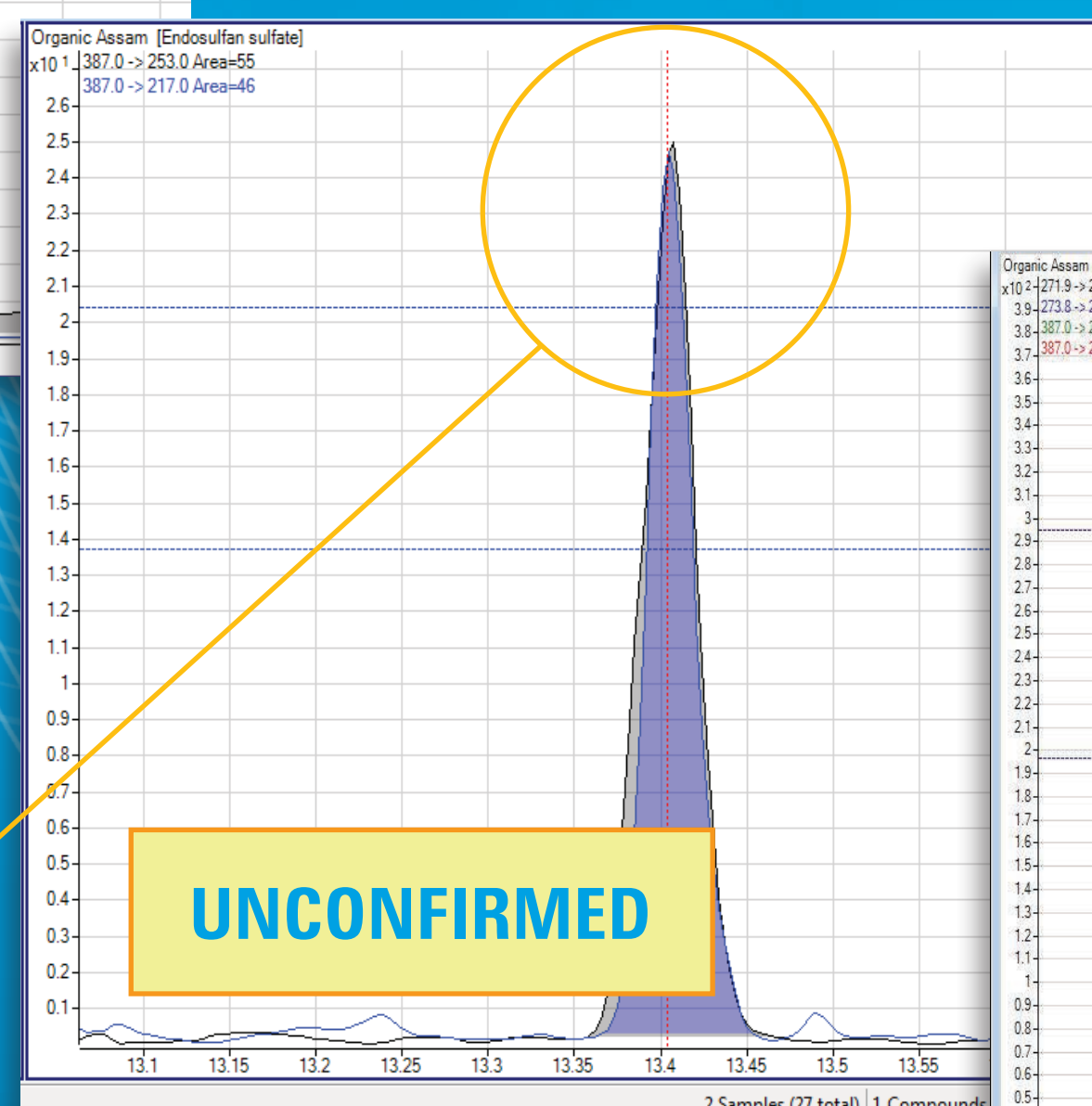
PESTICIDE AND ENVIRONMENTAL POLLUTANTS WITH CONFIDENCE

Matrix interferences make it difficult to identify trace pollutants in complex sample extracts. But Agilent's new Pesticide and Environmental Pollutant Analyzer 2.0 improves both data quality and quantification with an average of 8 MRM transitions for its 1000+ target database compounds.

See how easily **Agilent's Pesticide and Environmental Pollutant Analyzer 2.0** confirms the presence of endosulfan sulfate in tea extracts.



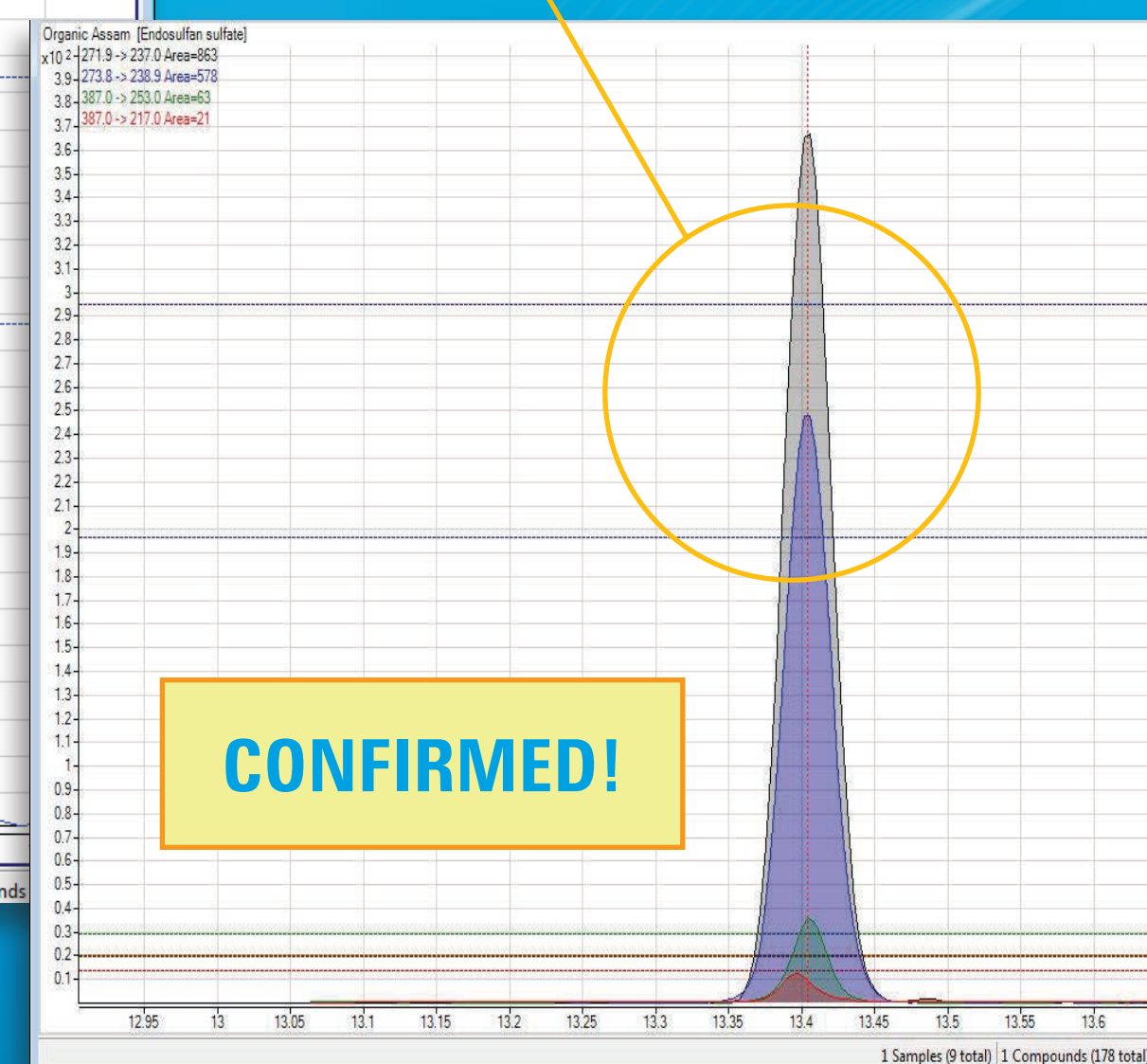
Target standard: Ion ratio within confidence band



Target in sample: Ion ratio outside confidence band

UNCONFIRMED

Target in sample: Ion ratio within confidence band



CONFIRMED!

G025044 - Microsoft Excel														
<div> <div>FileHomeInsertPage LayoutFormulasDataReviewViewAdd-InsAcrobat</div> <div> <div>Clipboard</div> <div>Font</div> <div>Alignment</div> <div>Number</div> <div>Conditional Formatting</div> <div>Format Styles</div> <div>Cell Styles</div> <div>Format Cells</div> <div>Sort & Find</div> <div>Editing</div> </div> </div>														
S6572 Endosulfan sulfate														
	R	S	T	U	V	W	X	Y	Z	AA	AB	AC	AD	AE
5654	35694-06-5	2,2',3,4',4'',5'-Hexachlorobiphenyl (E)	13.44	false	287.9	LowRes	217.9	LowRes	10	35	0.1	1600	75%	Q1
5655	35694-06-5	2,2',3,4',4'',5'-Hexachlorobiphenyl (E)	13.44	false	359.9	LowRes	324.9	LowRes	10	15	0.1	1350	64%	Q2
5656	35694-06-5	2,2',3,4',4'',5'-Hexachlorobiphenyl (E)	13.44	false	361.9	LowRes	289.9	LowRes	10	25	0.1	1210	57%	Q3
5657	35694-06-5	2,2',3,4',4'',5'-Hexachlorobiphenyl (E)	13.44	false	289.9	LowRes	217.9	LowRes	10	35	0.1	1030	49%	Q4
5658	35694-06-5	2,2',3,4',4'',5'-Hexachlorobiphenyl (E)	13.44	false	289.9	LowRes	219.9	LowRes	10	35	0.1	1020	48%	Q5
5659	35694-06-5	2,2',3,4',4'',5'-Hexachlorobiphenyl (E)	13.44	false	359.9	LowRes	287.8	LowRes	10	25	0.1	970	46%	Q6
5660	35694-06-5	2,2',3,4',4'',5'-Hexachlorobiphenyl (E)	13.44	false	324.9	LowRes	289.8	LowRes	10	15	0.1	960	45%	Q7
5661	35694-06-5	2,2',3,4',4'',5'-Hexachlorobiphenyl (E)	13.44	false	361.9	LowRes	291.8	LowRes	10	25	0.1	870	41%	Q8
5662	35694-06-5	2,2',3,4',4'',5'-Hexachlorobiphenyl (E)	13.44	false	218.0	LowRes	183.0	LowRes	10	20	0.1	800	38%	Q9
5663	35694-06-5	2,2',3,4',4'',5'-Hexachlorobiphenyl (E)	13.44	false	361.9	LowRes	326.8	LowRes	10	15	0.1	750	35%	Q10
5664	3735-33-9	Phosmet oxon	13.49	false	160.0	LowRes	77.0	LowRes	10	25	0.1	480	300%	Q1
5665	3735-33-9	Phosmet oxon	13.49	false	160.0	LowRes	51.0	LowRes	10	40	0.1	230	46%	Q1
5666	3735-33-9	Phosmet oxon	13.49	false	160.0	LowRes	133.0	LowRes	10	15	0.1	220	46%	Q2
5667	3735-33-9	Phosmet oxon	13.49	false	133.0	LowRes	76.9	LowRes	10	15	0.1	40	8%	Q3
5668	3735-33-9	Phosmet oxon	13.49	false	133.0	LowRes	50.9	LowRes	10	30	0.1	36	7%	Q4
5669	3735-33-9	Phosmet oxon	13.49	false	133.0	LowRes	104.8	LowRes	10	5	0.1	20	4%	Q5
5670	3735-33-9	Phosmet oxon	13.49	false	301.0	LowRes	191.8	LowRes	10	10	0.1	0	0%	Q6
5671	3735-33-9	Phosmet oxon	13.49	false	301.0	LowRes	191.8	LowRes	10	10	0.1	0	0%	Q7
5672	1031-07-4	Endosulfan sulfate	13.38	false	271.9	LowRes	237.0	LowRes	10	15	0.1	1480	100%	Q1
5673	1031-07-4	Endosulfan sulfate	13.38	false	273.8	LowRes	238.9	LowRes	10	15	0.1	1080	73%	Q1
5674	1031-07-4	Endosulfan sulfate	13.38	false	273.8	LowRes	236.9	LowRes	10	15	0.1	520	35%	Q2
5675	1031-07-4	Endosulfan sulfate	13.38	false	271.9	LowRes	235.0	LowRes	10	15	0.1	300	20%	Q3
5676	1031-07-4	Endosulfan sulfate	13.38	false	229.0	LowRes	194.0	LowRes	10	25	0.1	180	12%	Q4
5677	1031-07-4	Endosulfan sulfate	13.38	false	386.6	LowRes	288.7	LowRes	10	5	0.1	80	5%	Q5
5678	1031-07-4	Endosulfan sulfate	13.38	false	386.6	LowRes	252.7	LowRes	10	10	0.1	70	5%	Q6
5679	1031-07-4	Endosulfan sulfate	13.38	false	386.6	LowRes	252.7	LowRes	10	10	0.1	70	5%	Q6
5680	50-29-3	DOT-p,p'	13.51	false	235.0	LowRes	165.2	LowRes	10	20	0.1	5630	100%	Q1
5681	50-29-3	DOT-p,p'	13.51	false	237.0	LowRes	165.2	LowRes	10	20	0.1	3000	57%	Q1
5682	50-29-3	DOT-p,p'	13.51	false	235.0	LowRes	159.2	LowRes	10	15	0.1	1260	22%	Q2
5683	50-29-3	DOT-p,p'	13.51	false	165.0	LowRes	115.1	LowRes	10	30	0.1	290	5%	Q3
5684	50-29-3	DOT-p,p'	13.51	false	212.0	LowRes	176.1	LowRes	10	30	0.1	280	5%	Q4
5685	50-29-3	DOT-p,p'	13.51	false	369.8	LowRes	323.8	LowRes	10	25	0.1	1570	300%	Q1
5686	50-29-3	DOT-p,p'	13.51	false	369.8	LowRes	323.8	LowRes	10	25	0.1	1010	64%	Q1
5687	50-29-3	DOT-p,p'	13.51	false	369.8	LowRes	323.8	LowRes	10	25	0.1	1000	64%	Q2
5688	50-29-3	DOT-p,p'	13.51	false	323.8	LowRes	253.8	LowRes	10	35	0.1	650	41%	Q3
5689	50-29-3	DOT-p,p'	13.51	false	251.9	LowRes	216.9	LowRes	10	20	0.1	460	29%	Q4
5690	50-29-3	DOT-p,p'	13.51	false	323.8	LowRes	251.8	LowRes	10	35	0.1	430	27%	Q5
5691	50-29-3	DOT-p,p'	13.51	false	393.8	LowRes	358.8	LowRes	10	15	0.1	410	26%	Q6
5692	50-29-3	DOT-p,p'	13.51	false	395.8	LowRes	360.8	LowRes	10	15	0.1	340	22%	Q7
5693	50-29-3	DOT-p,p'	13.51	false	251.9	LowRes	181.9	LowRes	10	35	0.1	330	21%	Q8
5694	50-29-3	DOT-p,p'	13.51	false	323.8	LowRes	288.8	LowRes	10	25	0.1	300	19%	Q9

Confirmation is as easy as 1-2-3:

1. Modify acquisition method to include additional transitions
2. Run one additional analysis of sample extract
3. Confirm contaminant: endosulfan sulfate

Customized to get you on the **FAST TRACK**

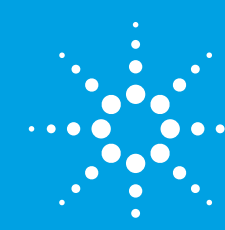


Get your lab on the **"Fast Track"**

Contact your local Agilent Representative or Agilent Authorized Distributor

Call **800-227-9770** (in the U.S. or Canada) or visit www.agilent.com/chem/pesticides

The Measure of Confidence



Agilent Technologies

This information is subject to change without notice.
© Agilent Technologies, Inc. 2012 Printed in the USA June 22, 2012 5991-0557EN