

Take Gas Analysis Mobile — *Without Sacrificing Results*

Key Learning Objectives:

- Learn how to determine composition and calorific value of natural gas
- Learn how to take typical laboratory analysis mobile and get reproducible results
- Learn how to configure analysis in accordance with ASTM, GPA, and ISO methods

Who Should Attend:

- (lab) technicians in (petro)chem and natural gas performing gas chromatographic analysis and in particular gas analysis
- (lab) managers in (petro)chem and natural gas in charge of (contract) labs performing gas chromatographic analysis and in particular gas analysis
- R&D personnel developing solutions where they have a need to analyze gases
- Academics developing solutions in alternative fuels, fuel cells etc having the need to analyze gases

LIVE WEBCAST: Tuesday, July 23, 2013 at 9:00 am EDT

Register free at www.chromatographyonline.com/gasanalysis

Event Overview:

The natural gas (NG) market is broken into four discrete segments: exploration, liquefaction, transportation, and regasification. All four of these segments require diligent and accurate characterization of the NG to ensure maximum efficiency in investment and operational expenditures.

Come learn about and discuss the most critical characterizations of NG characterization utilizing a gas chromatograph (GC). Since the two key aspects of characterization are diligence and accuracy, the benefits taking the analysis onsite with micro GC analysis can offer unprecedented performance in both of the two critical aspects mentioned.

The following applications will be discussed in detail and supported by real-world data:

- Exploration: mud logging characterization; up to C12 qualification and quantification
- Liquefaction: calorific value determination
- Transportation: gas composition during loading
- Regasification: calorific value validation and odorant addition monitoring

Presented by



Sponsored by



Agilent Technologies

Presenters:

Coen Duvetot
Product Manager, Micro GC

Thomas Szakas
Mobile Measurement
Business Development &
Commercialization Manager

Moderator:

Laura Bush
Editorial Director,
LCGC

For questions contact Kristen Farrell at kfarrell@advanstar.com



Agilent Technologies



Agilent Technologies

TAKING GAS ANALYSIS MOBILE

Without Sacrificing Results

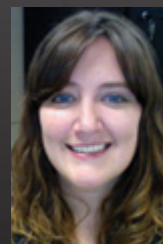


Speakers:



Thomas Szakas

Mobile Measurement Business
Development & Commercialization
Manager



Moderator

Meg Evans

Managing Editor LC/GC



Agilent Technologies

Agilent Lab Quality... When and Where You Need It



What if you could take your laboratory equipment to the sample?



Agilent Technologies

The Agilent 490 Micro GC Family



490 Micro GC Family

Basic cabinets, 19" rack and Field Case



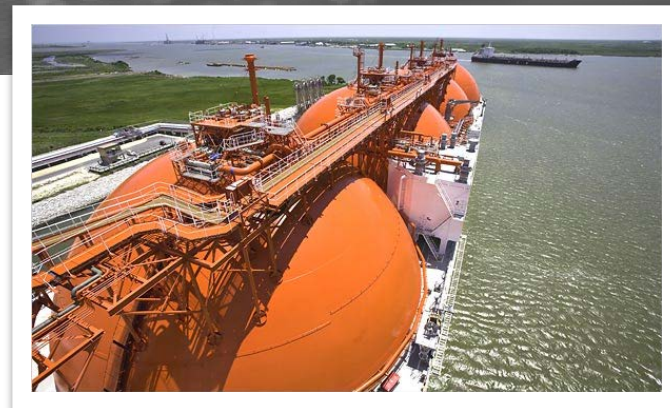
**490 Micro GC Basic cabinets
2-Channel and 4-channel**

**The field case provides “on-the-go”
measurements**



Natural Gas

- Permanent gases
- Hydrocarbons
- Odorants



Compound	Typical Concentration (%) ^[1]
Methane	70 - 90
Ethane	0 - 20
Propane	
Butane	
Carbon dioxide	0 – 8
Oxygen	0 – 0.2
Nitrogen	0 – 5
Hydrogen sulphide	0 – 5
Other: Helium, Argon, Neon, Xeon, Hydrogen	Traces

Reference [1]: <http://naturalgas.org>



**Micro-Gasifier for
Liquefied Natural Gas (LNG)
sample introduction**



Agilent Technologies

Measure **2** *Mitigate*

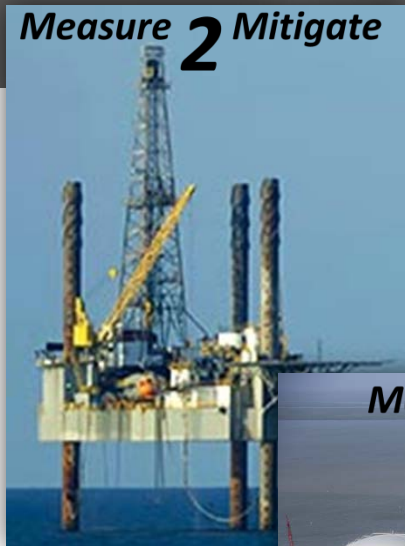
What are we measuring?

What are we trying to mitigate?



Agilent Technologies

Measure **2** Mitigate



Measure **2** Mitigate



Measure **2** Mitigate



Measure **2** Mitigate



Explore

Pipeline

Measure **2** Mitigate

Transport

Distribute



Agilent Technologies

Confidentiality Label
10/8/2013

Importance of Accurate Testing Throughout the Process?

Pricing/Profitability Determination

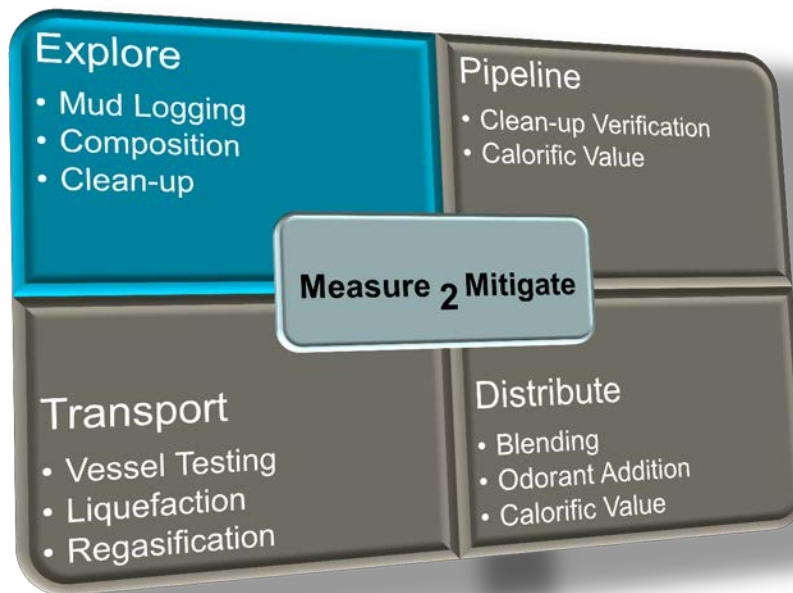
1. Quantity of gas
2. Amount of processing to make it 'pipe' ready
3. Amount of transportation

For example:

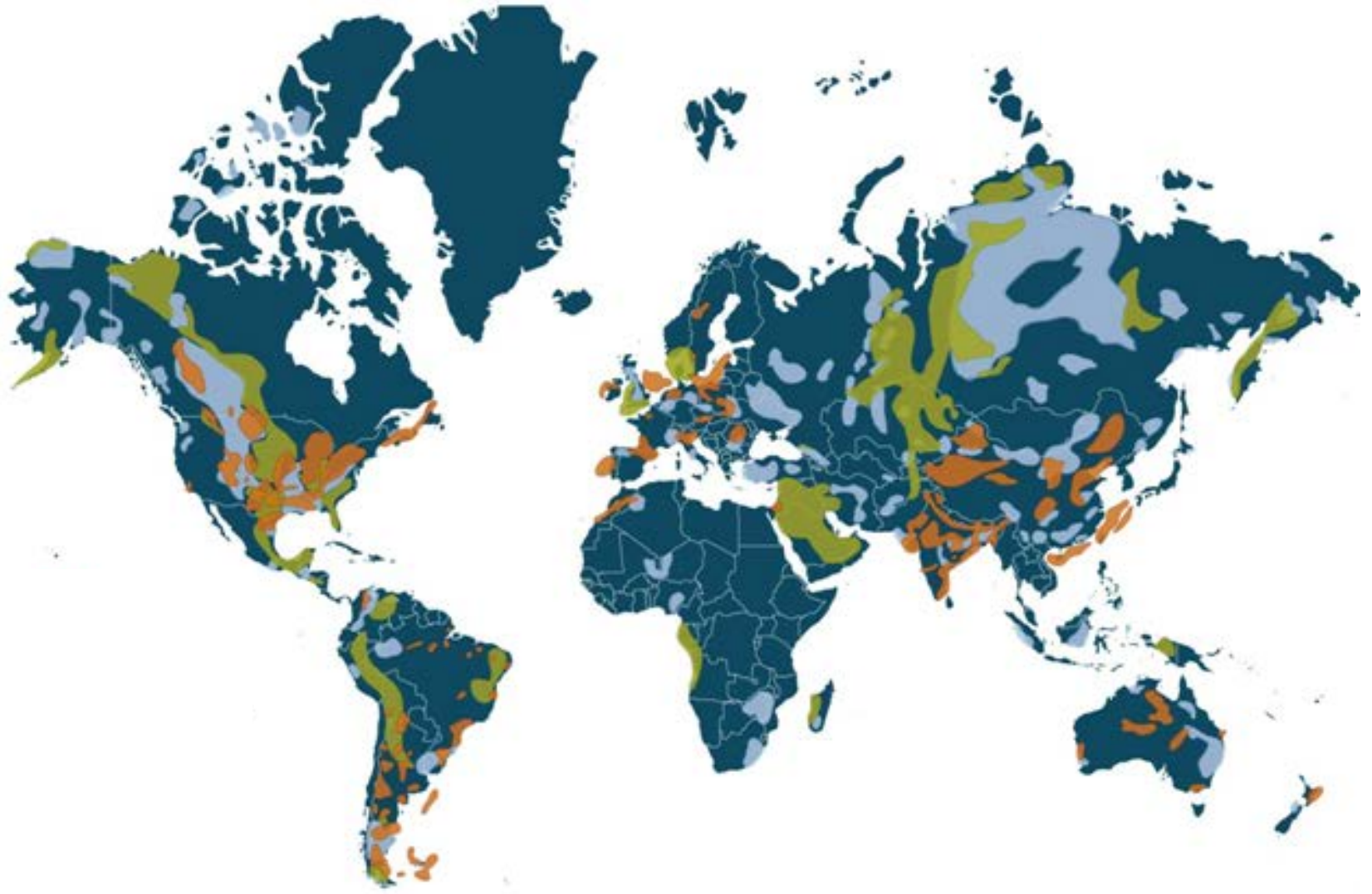
- lowest will be 'well head' customers
- Highest will be 'residential' customers



Phase 1 – Exploration



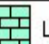
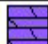



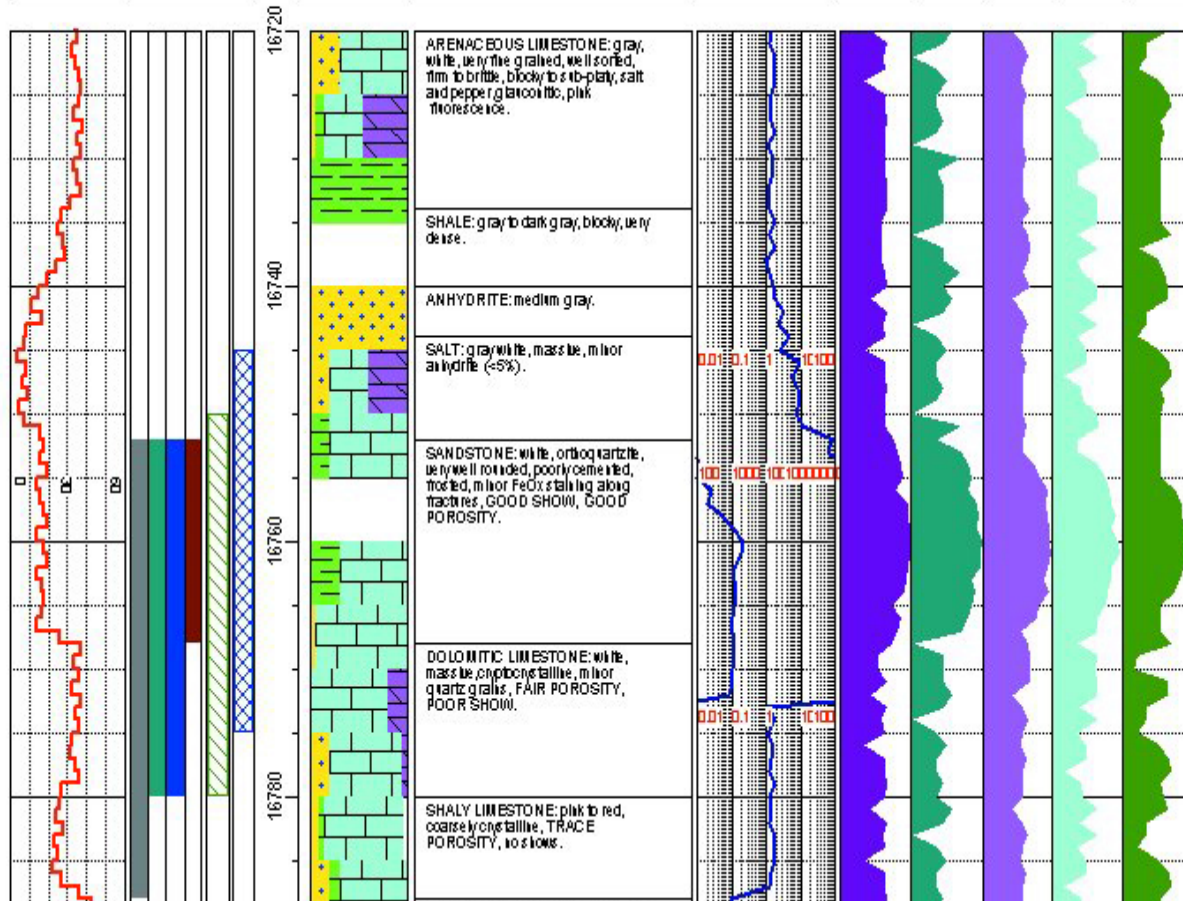
Where is the Starting point?



Agilent Technologies

Mud Logging

<div><div> Sandstone</div><div> Shale</div><div> Limestone</div><div> Dolomite</div><div> Lost Circulation</div></div>													
DRILL RATE (Min./Foot)	TRACE FOOT RACE GOOD CORES Tests		Depth	Cuttings Lithology %	LITHOLOGY DESCRIPTION	TOTAL GAS			METHANE (0.001 - 1.0)	ETHANE (0.001 - 1.0)	PROPANE (0.01 - 10)	BUTANES (0.01 - 10)	PENTANES (0.01 - 10)
0 60						0.1	10	1000					



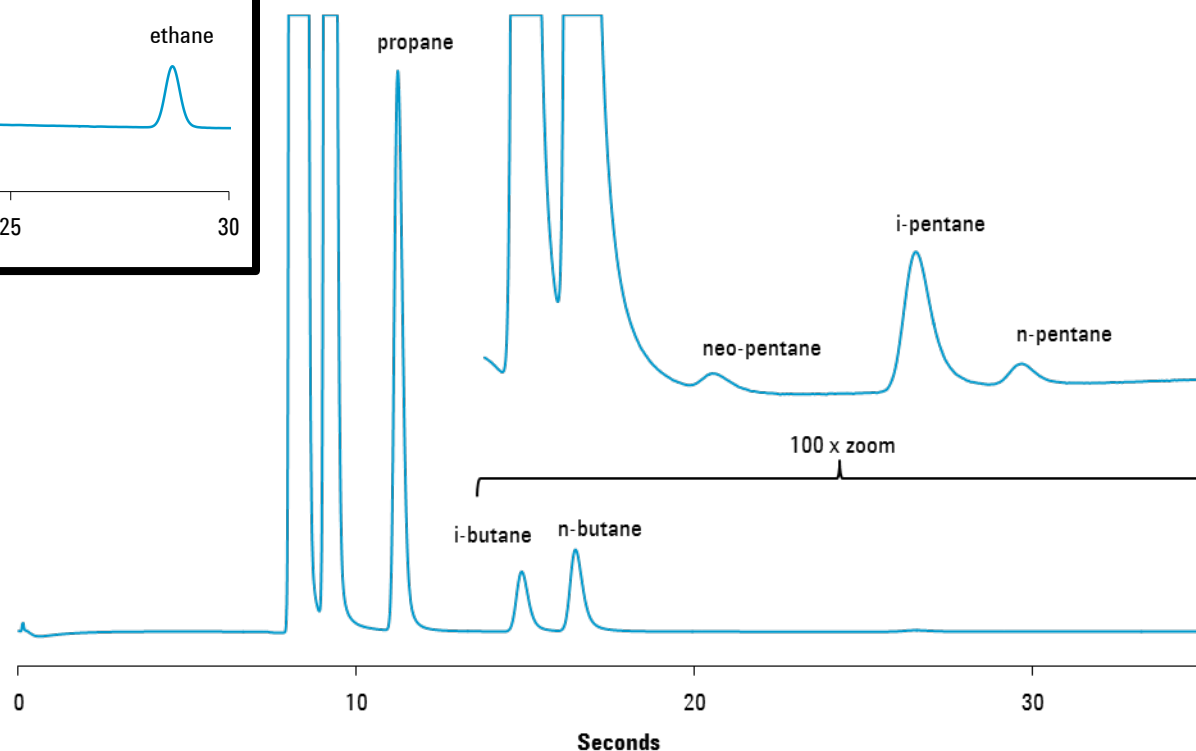
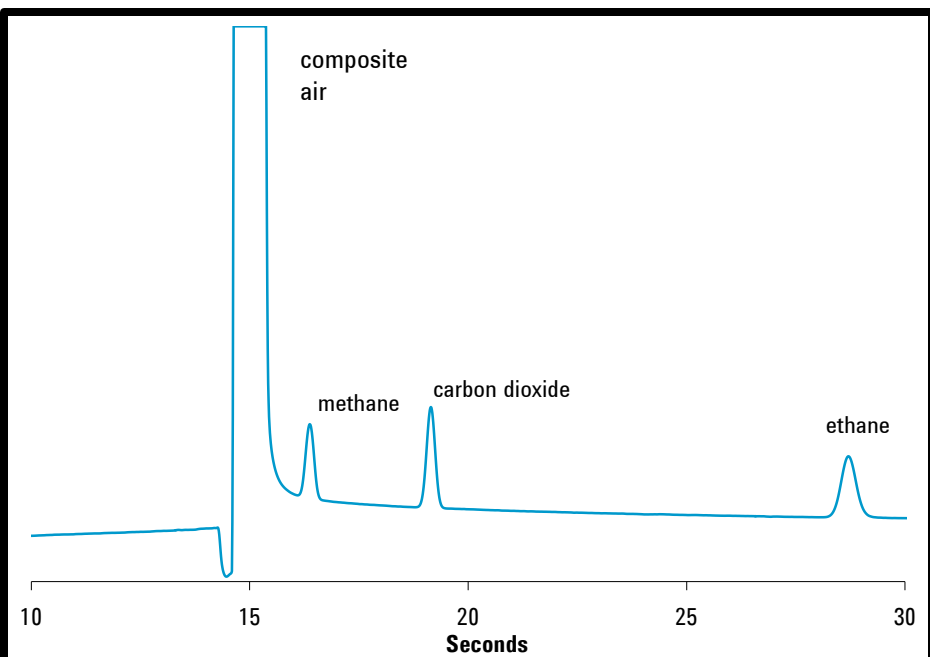
Fast

Accurate

Robust

Simple

What can you do in 30 Seconds?



490-PRO Micro GC

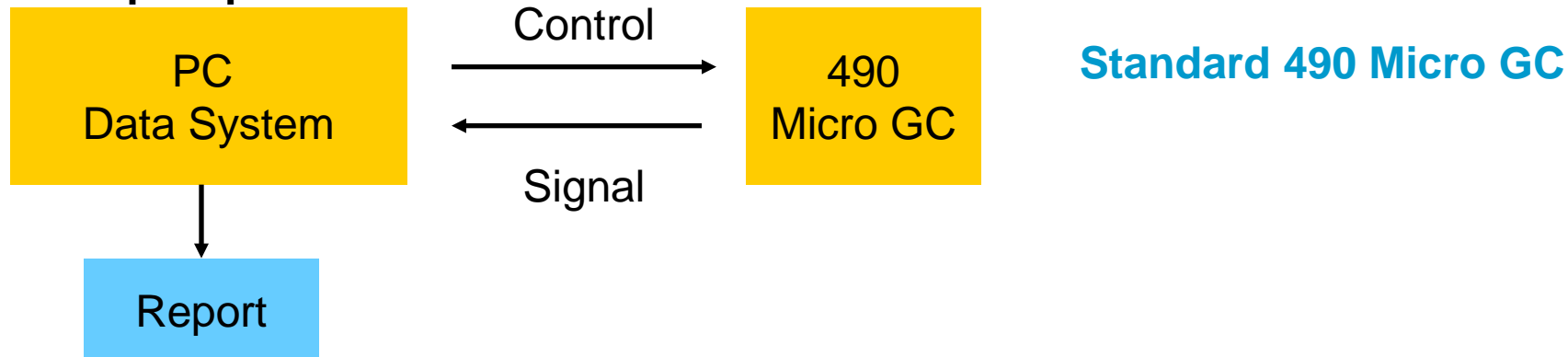
A Fast, Small Form Factor, High Performance Gas Measurement Platform Designed for Unattended Operation and supports Industrial networks



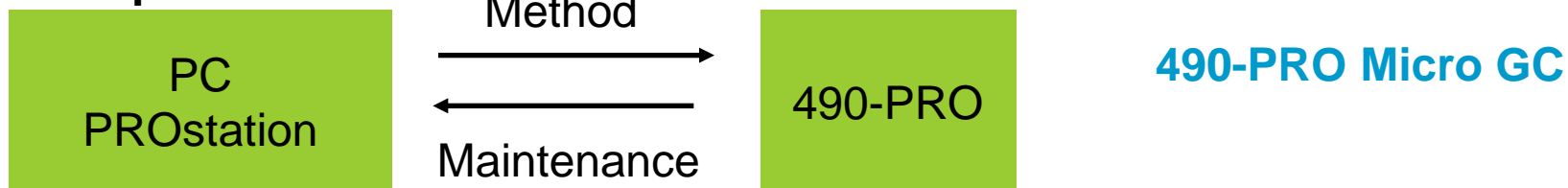
Same hardware as the 490 Micro GC

490 Micro GC versus 490-PRO

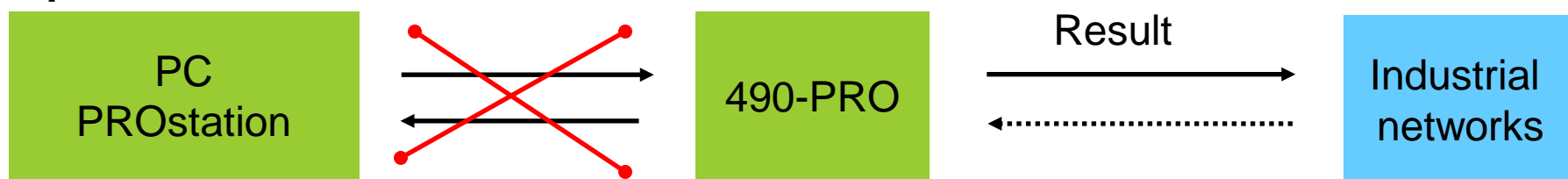
Set up / Operation



Set up



Operation



490-PRO Micro GC

OBDH

Automation

Application

Modbus

FTP client

PROstation

**External I/O
devices**

Local display
(optional)



Agilent Technologies

On Board Data Handling

Built into the 490-PRO Micro GC:

- Peak integration
- Peak identification
- Peak calibration
- Peak grouping

This means that for routine measurements:

- Full autonomous operation (no operator required)
- No external data handling software required
- No PC needed to generate results



490-PRO Micro GC – *Fully Automated Operation*

Sequential measurement runs that include:

- sample type
- valve/sample position
- flush time
- calibration level

Calibration and/or verification analysis

- after a desired # of samples
- based on a specific time
- on demand via remote command
- automatic (re)calibration if verification values “fail”



490-PRO Micro GC – Fully Automated Operation

Stream selection and control:

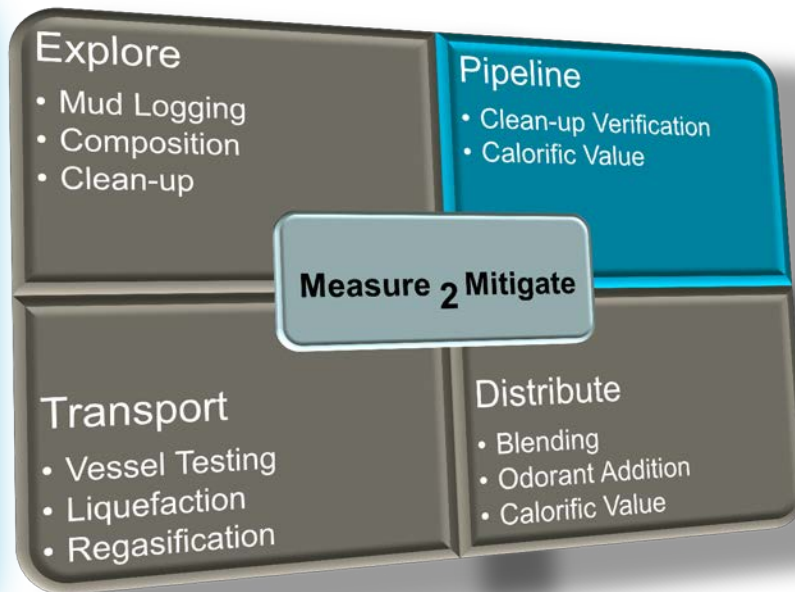
- Electrically actuated multi-position valves
- Solenoids based stream selectors

Remote Communication:

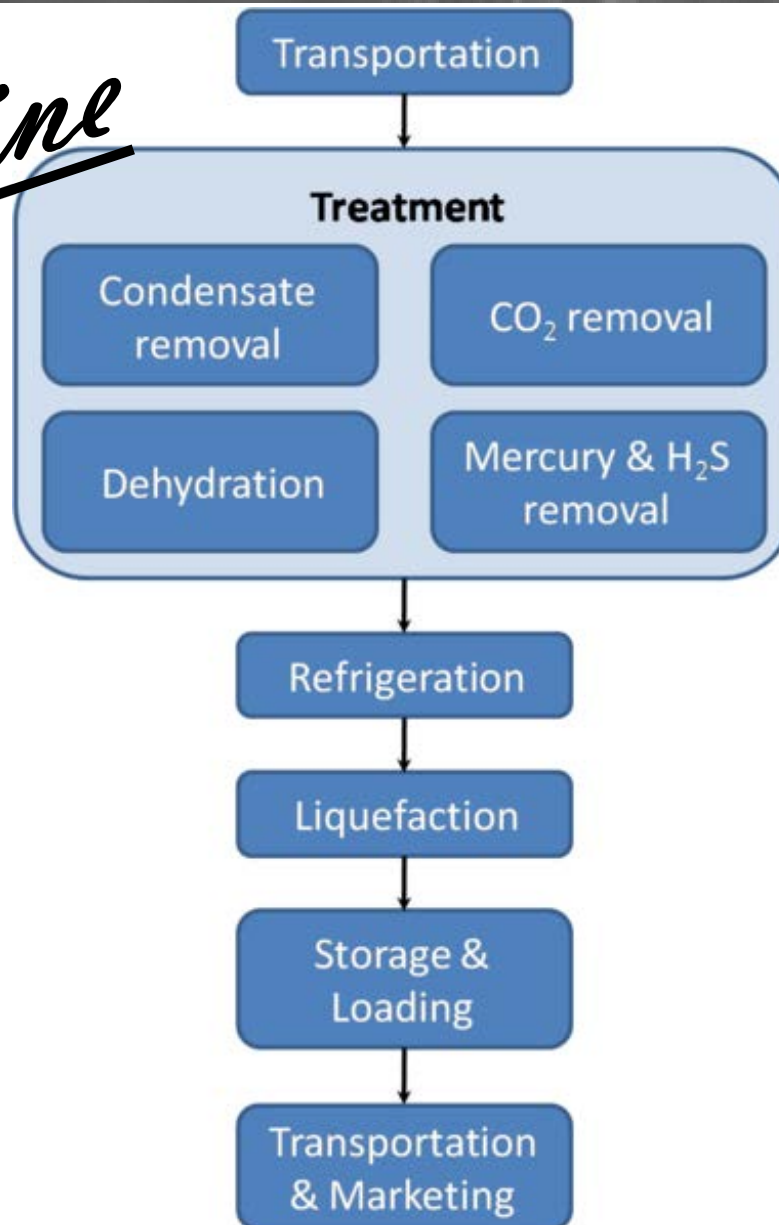
- MODBUS
- Digital input
- 4-20 mA
- ftp server



Phase 2 – Pipeline



Pipeline



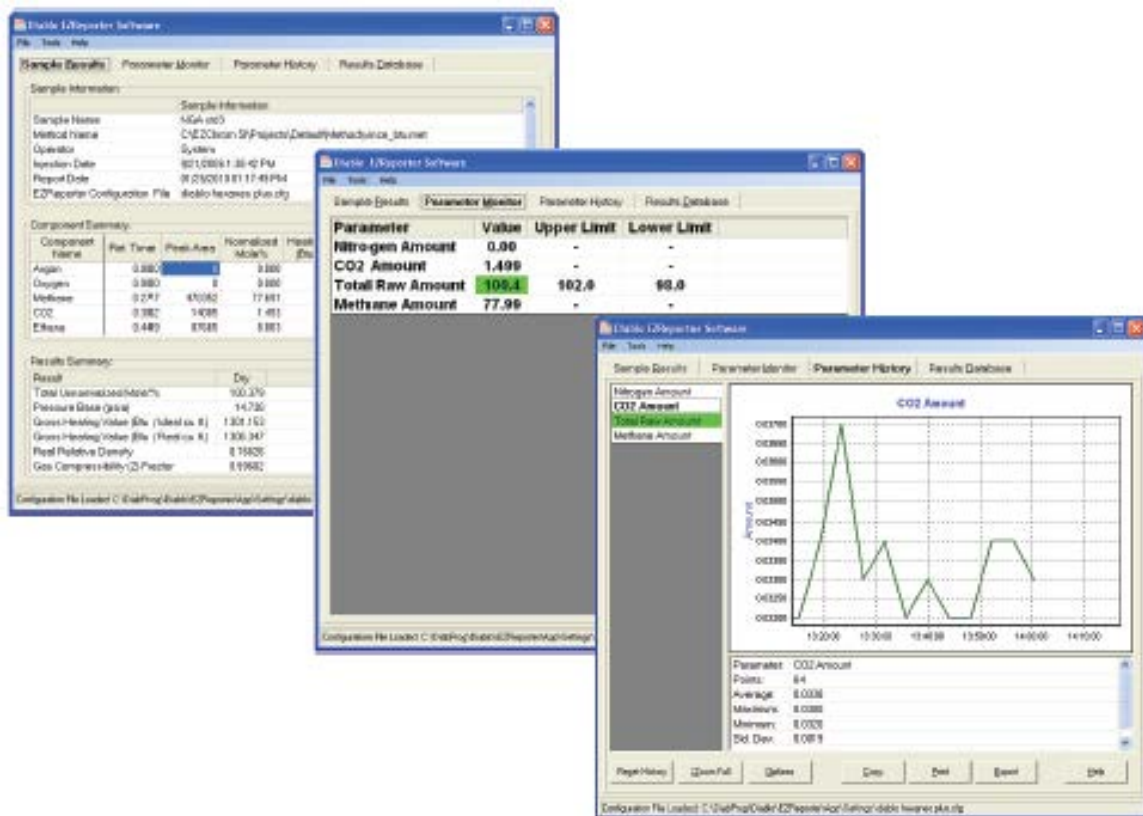
Calorific Value = MJ/m^3



- The CV of natural gas is measured continually using process gas chromatographs.
- Process gas chromatographs separate natural gas into its constituent compounds (i.e. methane, ethane, carbon dioxide, etc.) and measure the amount of each in the gas. The physical characteristics of each component, as defined by ISO 6976, are programmed into the chromatograph and an overall CV is derived from the measured composition.
- The determination of the CV of gas is carried out in accordance with international standards
- The calorific value of natural gas is measured at reception terminals
- All domestic customers and most industrial customers are billed on the basis of the daily CV averages

EZReporter for calorific value calculations

- Option number G3582A#105
- External software compatible with Agilent CDS
- Key parameters available:
 - In printed format
 - As an export
 - For monitoring incl min/max values
 - For trend analysis



Product description

EZReporter for calorific value / BTU calculations

Compatible with

Agilent EZChrom 3.3.2.,
Agilent OpenLAB CDS EZChrom Edition and
Agilent OpenLAB CDS ChemStation Edition

Supported standards

GPA 2172-09
ASTM D 3588-98 (2003)
ISO 6976 (1995)



Agilent Technologies

Natural Gas Analyzer portfolio

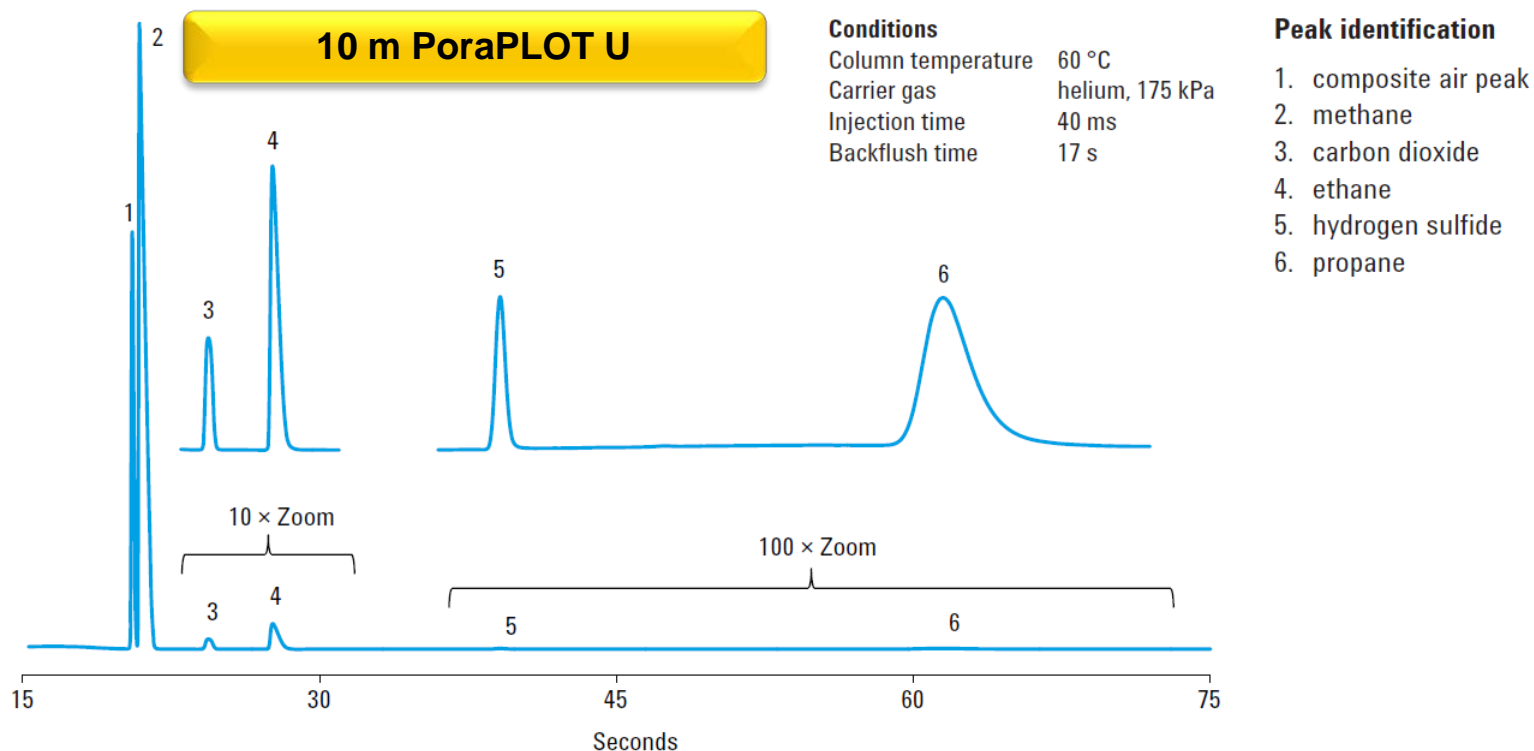
Analyzer characteristics	Natural Gas Analyzer A	Natural Gas Analyzer A Extended	Natural Gas Analyzer B	Natural Gas Analyzer B Extended
Option number	G3882A#120	G3882A#121	G3882A#122	G3882A#123
Micro GC cabinet	Dual with 2 channels	Quad with 3 channels	Dual with 2 channels	Quad with 3 channels
Column channels installed	HayeSep A 40 cm, without back flush	HayeSep A 40 cm, with back flush	PoraPLOT U 10 m, with backflush	CP-MolSieve 5A 10 m, with backflush and retention time stability option
	CP-Sil 5 CB 6 m, without back flush	CP-Sil 5 CB 4 m, with back flush	CP-Sil 5 CB 6 m, without back flush	PoraPLOT U 10 m, with backflush
		CP-Sil 5 CB 8 m, without back flush		CP-Sil 5 CB 6 m, without back flush
Analysis	Hydrocarbons C1-C9	Hydrocarbons C1-C12	Hydrocarbons C1-C9	Hydrocarbons C1-C9
	Carbon dioxide, Air	Carbon dioxide, Air	Carbon dioxide, Air Hydrogen sulfide	Carbon dioxide, Air Hydrogen sulfide Permanent gases (N ₂ , O ₂ , He & H ₂)
Typical analysis time	100 s (until C7)	100 s (until C7)	75 s (until C7)	75 s (until C7)
	400 s (until C9)	240 s (until C12)	400 s (until C9)	400 s (until C9)



Natural Gas Analyzer B

- **Natural gas**; composition primarily CH₄, Air, CO₂, C2 – C9 hydrocarbons
- Dual channel cabinet with 2 column channels
- Heated sample line and injectors

- PPU equipped with Backflush functionality
- UltiMetal treated sample lines: ready for H₂S analysis
- Part number **G3582A + G3582A#122**



Natural Gas Analyzer B

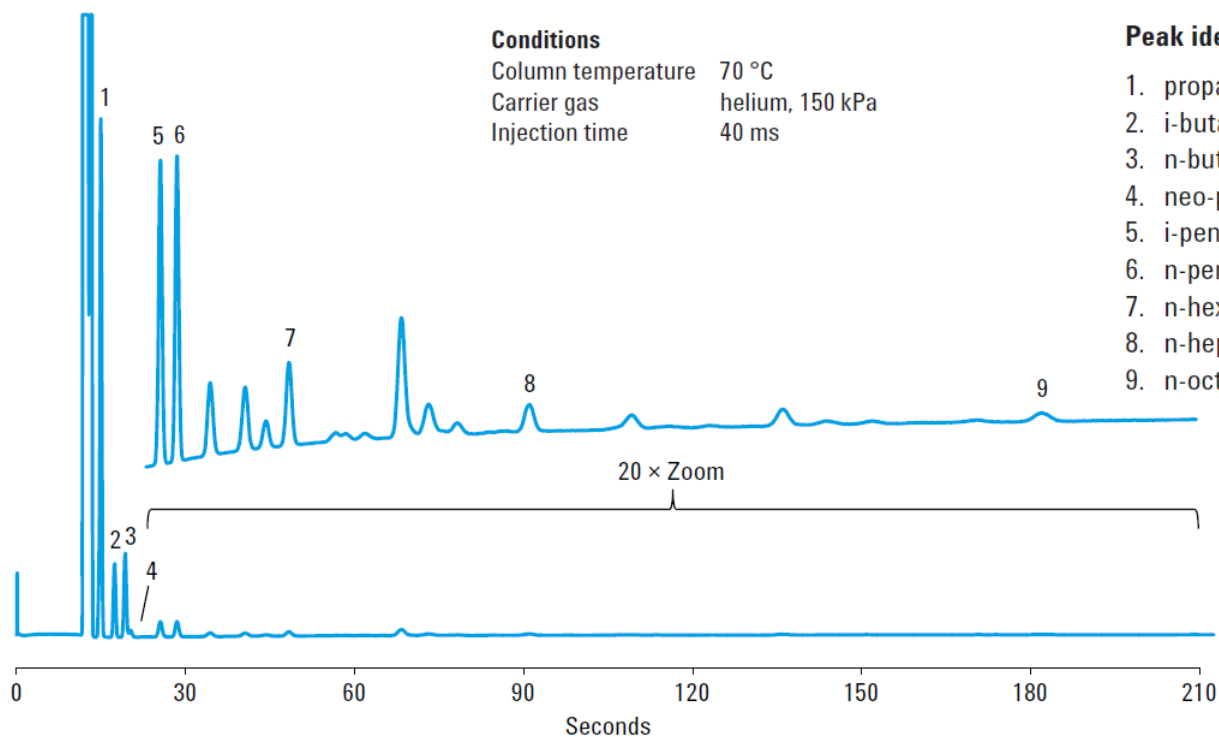
6 m CP-Sil 5 CB

Conditions

Column temperature 70 °C
Carrier gas helium, 150 kPa
Injection time 40 ms

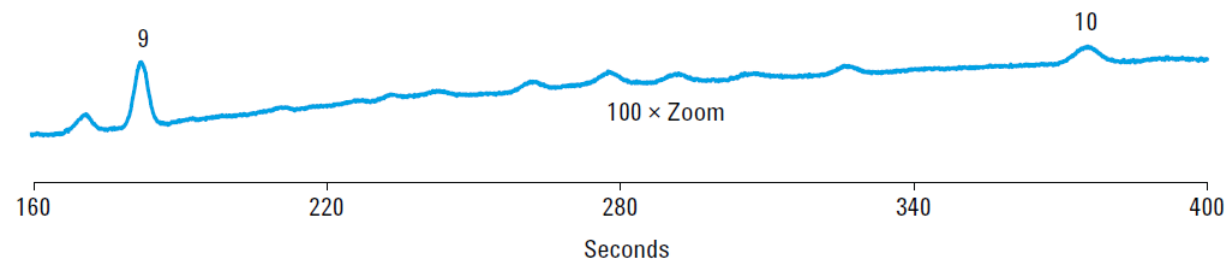
Peak identification

1. propane
2. i-butane
3. n-butane
4. neo-pentane
5. i-pentane
6. n-pentane
7. n-hexane
8. n-heptane
9. n-octane



Peak identification

9. n-octane
10. n-nonane



Agilent Technologies

Natural Gas Analyzer B Extended

- Natural gas with **detailed Permanent Gas Analysis**
- Quad channel cabinet with 3 column channels

- Channel 1 & 2 identical to Natural Gas Analyzer B (#122)
- Separate carrier gas inlet to have the flexibility to change between helium and argon
- Part number **G3582A + G3582A#123**

10 m MoSieve 5A

Sample 1

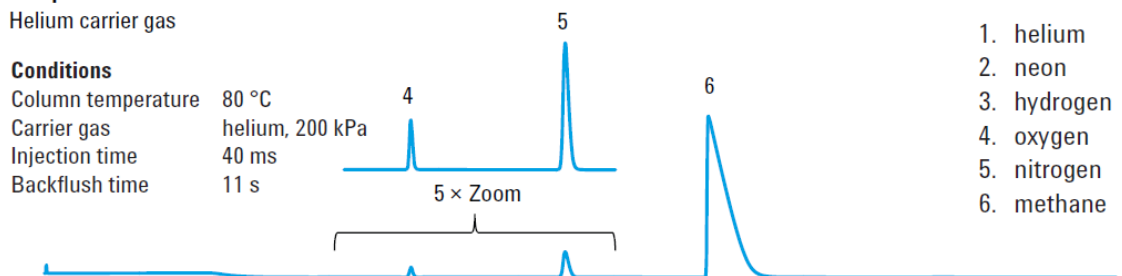
Helium carrier gas

Conditions

Column temperature 80 °C
Carrier gas helium, 200 kPa
Injection time 40 ms
Backflush time 11 s

Peak identification

1. helium
2. neon
3. hydrogen
4. oxygen
5. nitrogen
6. methane

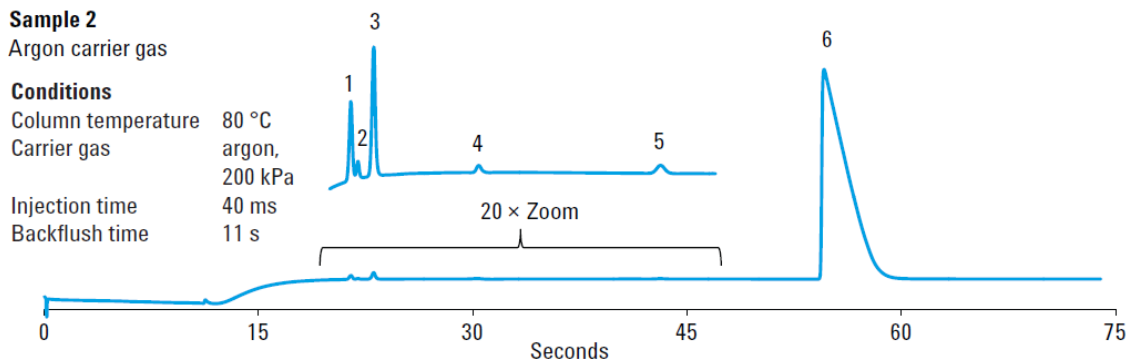


Sample 2

Argon carrier gas

Conditions

Column temperature 80 °C
Carrier gas argon, 200 kPa
Injection time 40 ms
Backflush time 11 s



Phase 3 - Transportation



Explore

- Mud Logging
- Composition
- Clean-up

Pipeline

- Clean-up Verification
- Calorific Value

Measure 2 Mitigate

Transport

- Vessel Testing
- Liquefaction
- Regasification

Distribute

- Blending
- Odorant Addition
- Calorific Value



Phase 3 - Transportation



Explore

- Mud Logging
- Composition
- Clean-up

Pipeline

- Clean-up Verification
- Calorific Value

Measure 2 Mitigate

Transport

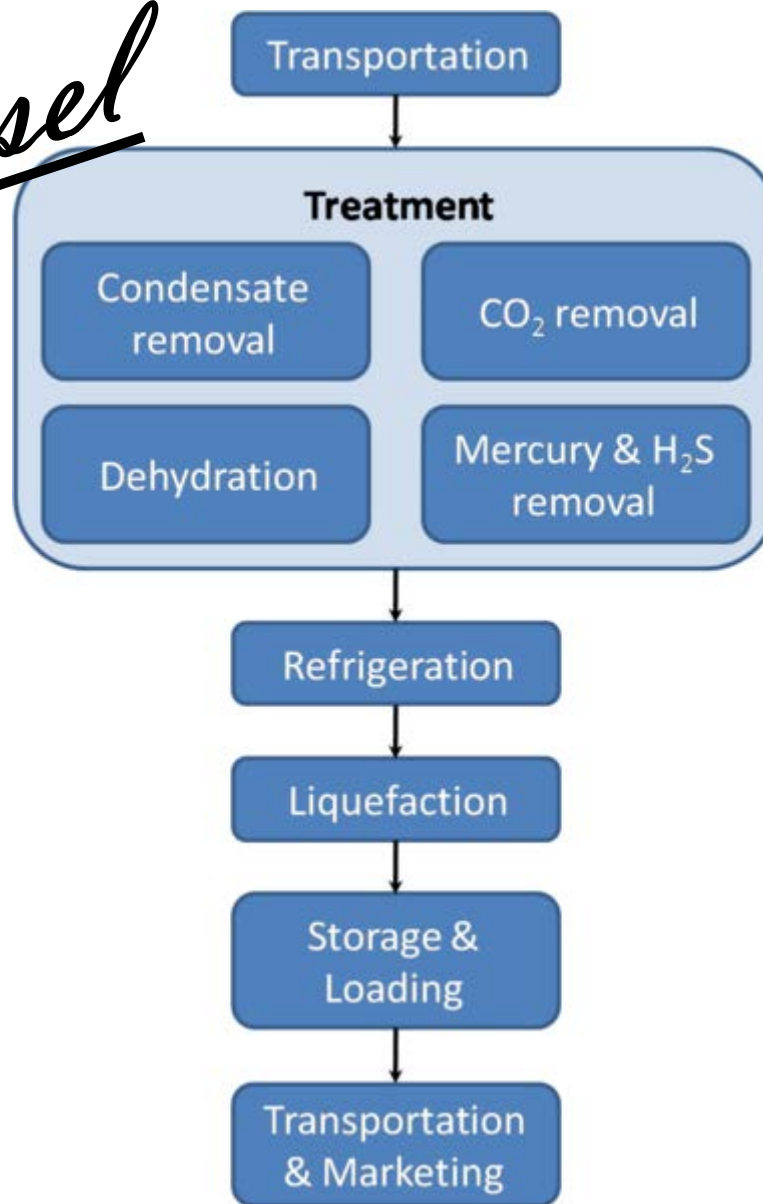
- Vessel Testing
- Liquefaction
- Regasification

Distribute

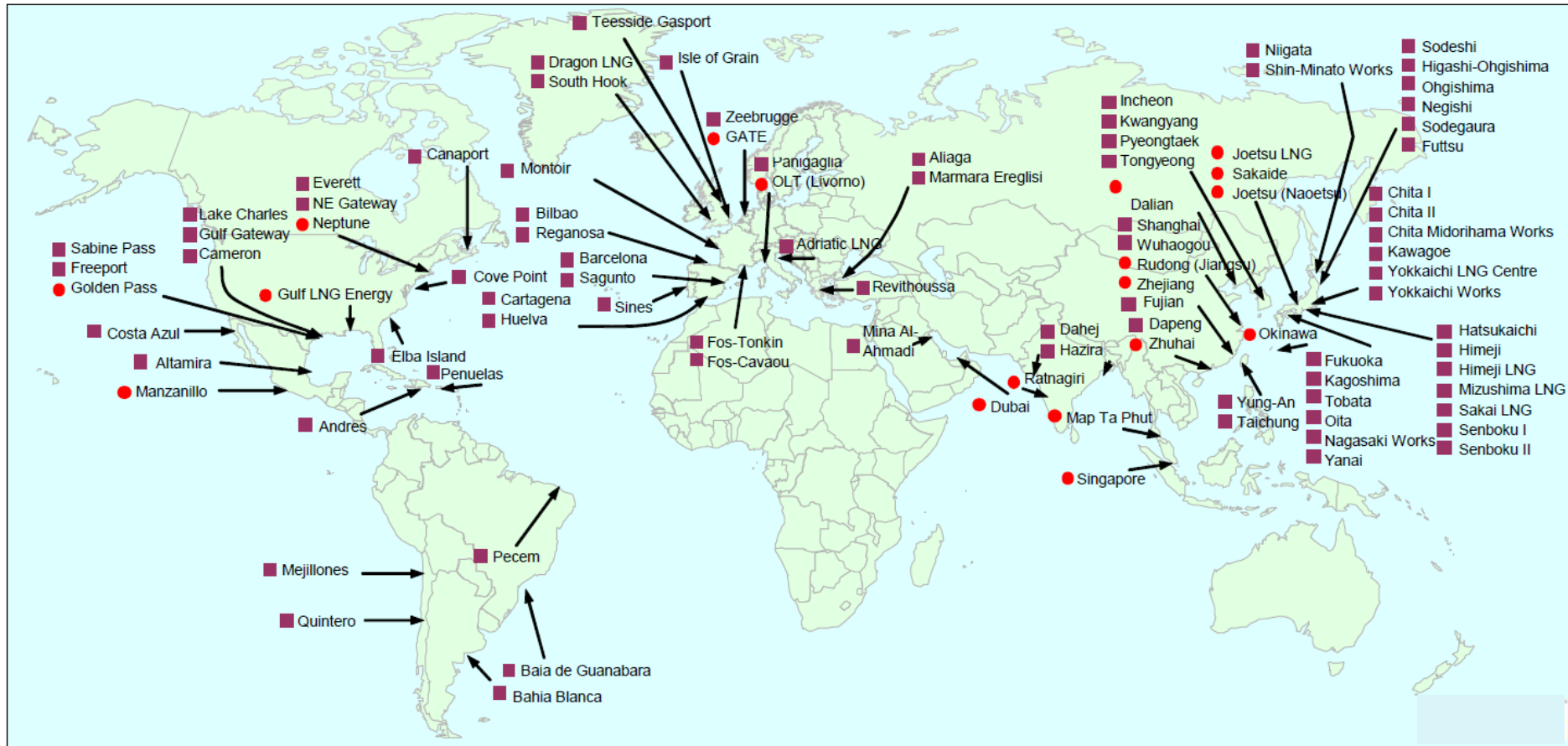
- Blending
- Odorant Addition
- Calorific Value



Vessel



Where are the vessels coming from and going to?



Gas composition analysis during tank loading

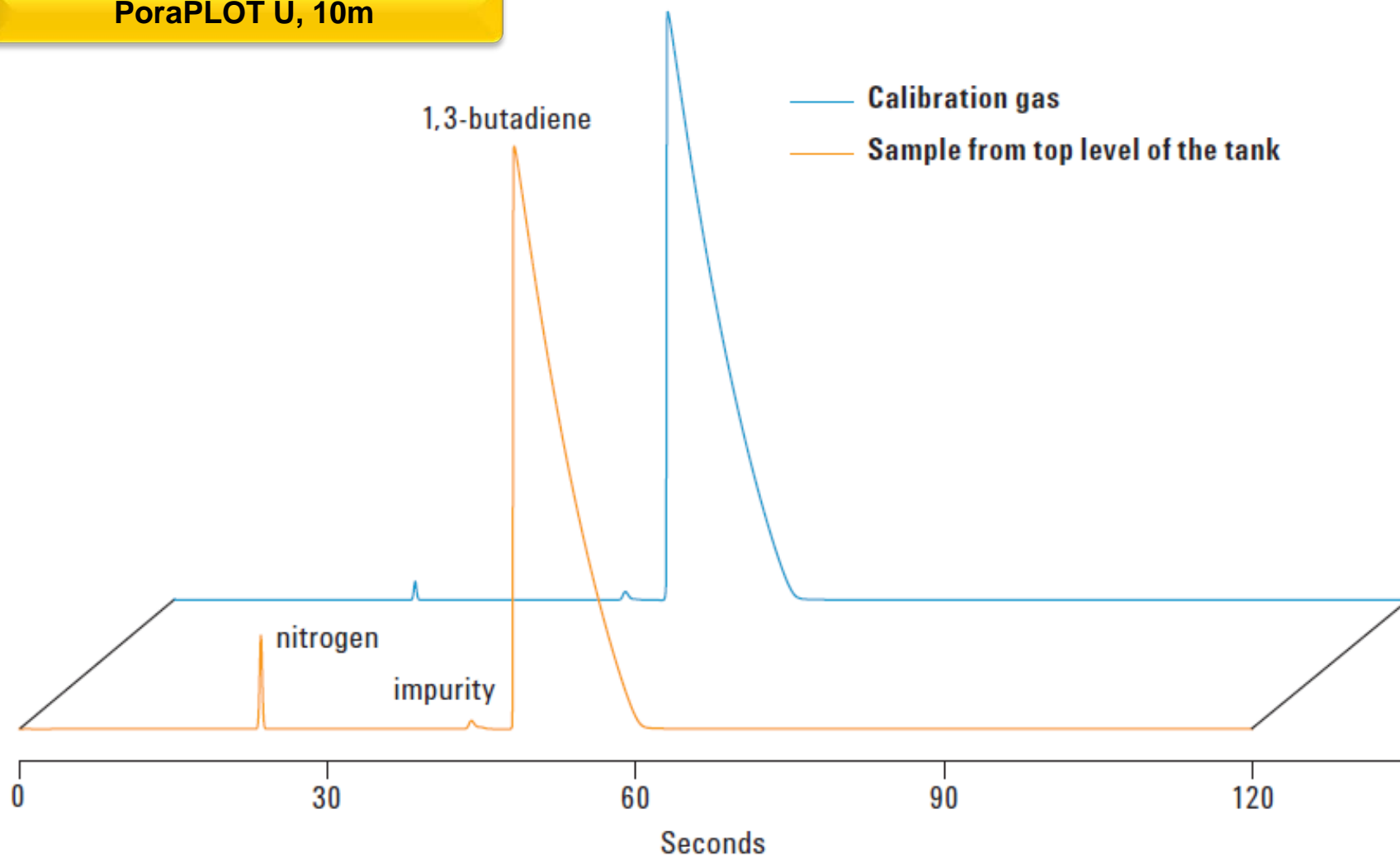
- Tank flushed with nitrogen
- Gaseous compounds loaded (heavier than nitrogen, sinks to the bottom)
- Micro GC analysis to check tank is 100 % filled
- Tank chilled and filled with liquefied compound



- Samples from three stages in the tank are taken with 10 ml gas tight
- Injection on the (optional) luer-lock front inlet
- Micro GC equipped with portable field case

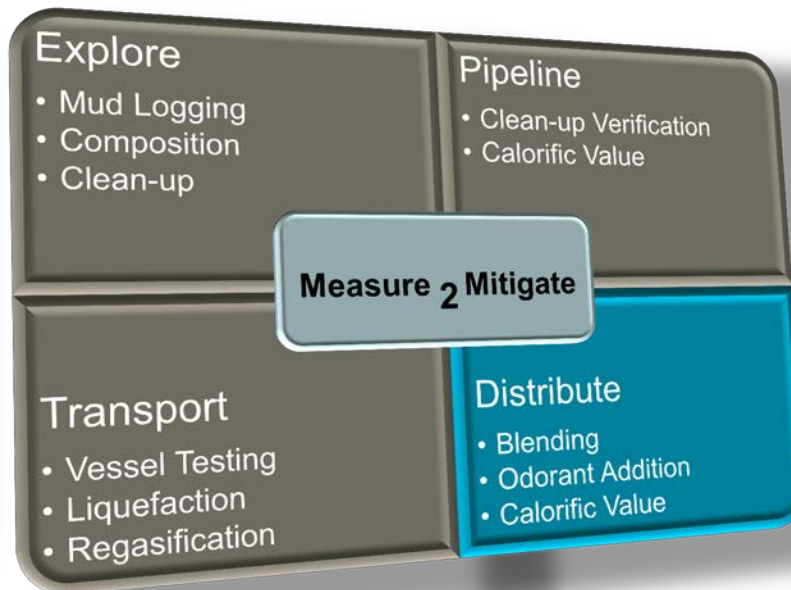
Gas composition analysis during tank loading

PoraPLOT U, 10m



Agilent Technologies

Phase 4 - Delivery



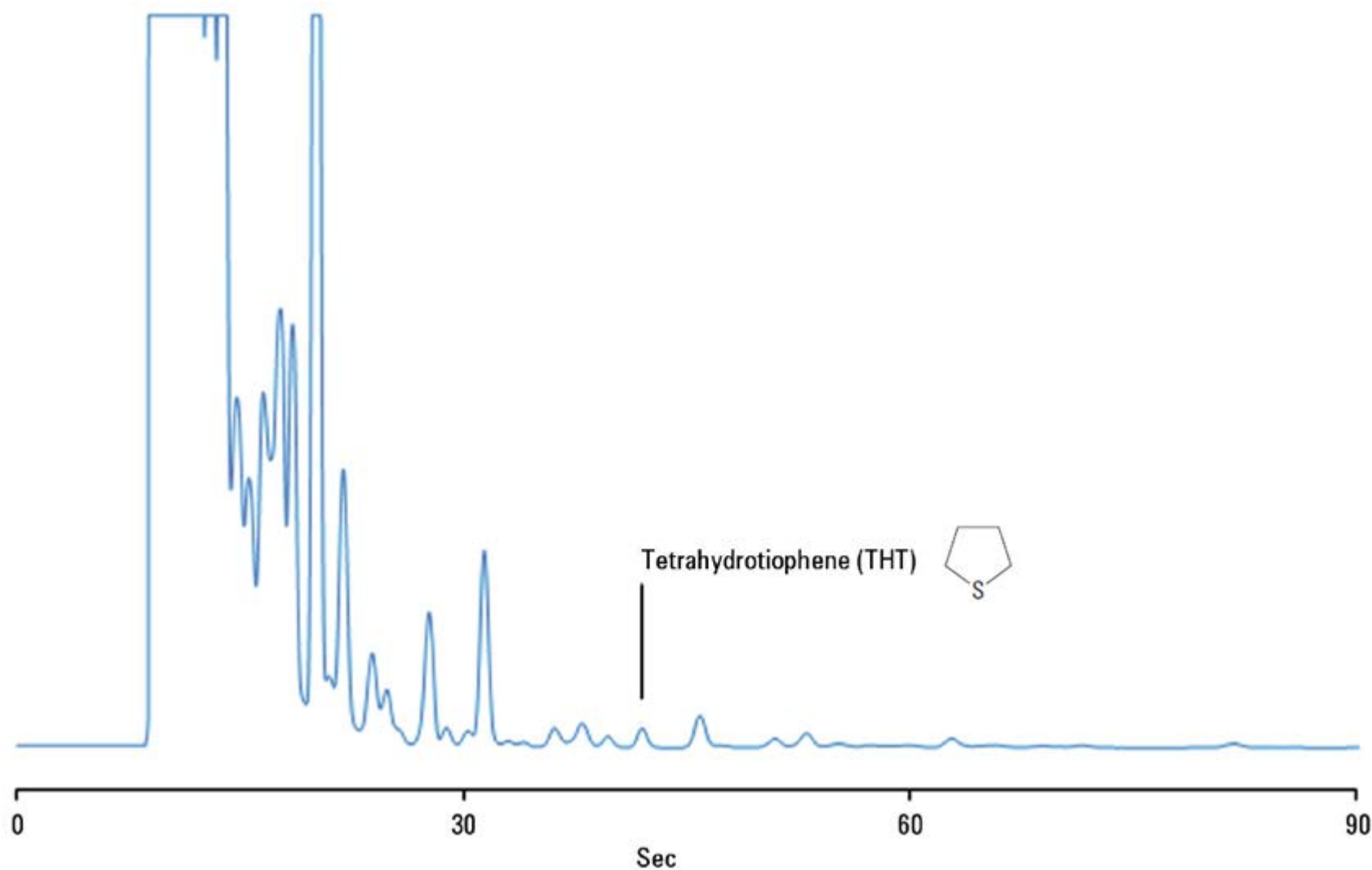
Delivery

On its way out of the terminal, the gas undergoes any number of treatment processes needed to bring its specifications in line with regulatory and end user requirements.

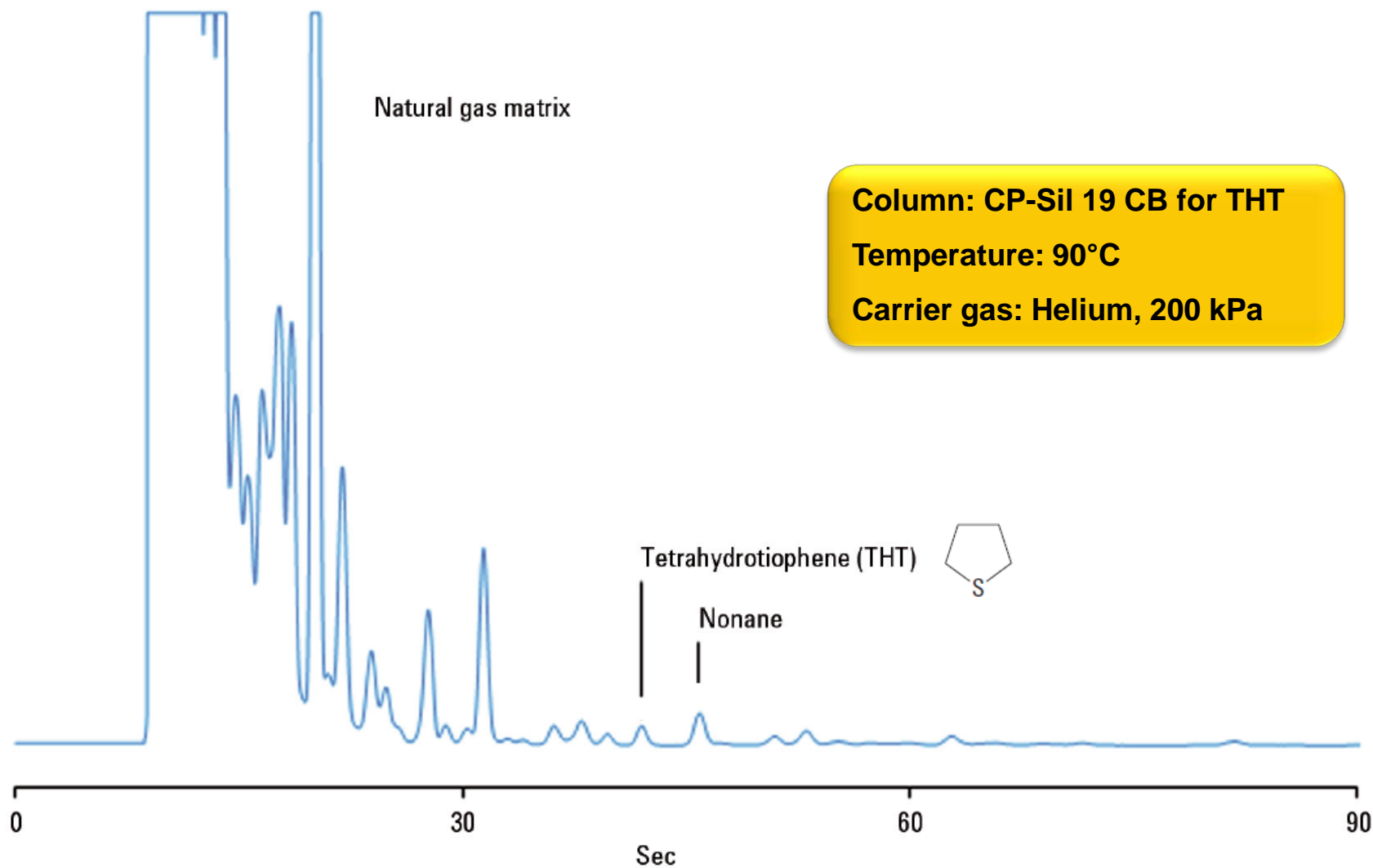
Its heating value, for example, may be adjusted by altering nitrogen, butane or propane content or blending it with other gases.



Natural Gas: *THT* (odorant)



Natural Gas: *THT* (odorant)



Natural Gas: *MES*



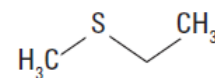
Matrix

Column: MES in Nat Gas

Temperature: 90°C

Carrier gas: Helium, 70 kPa

n-Decane



Methyl Ethyl Sulfide (MES)

60

90

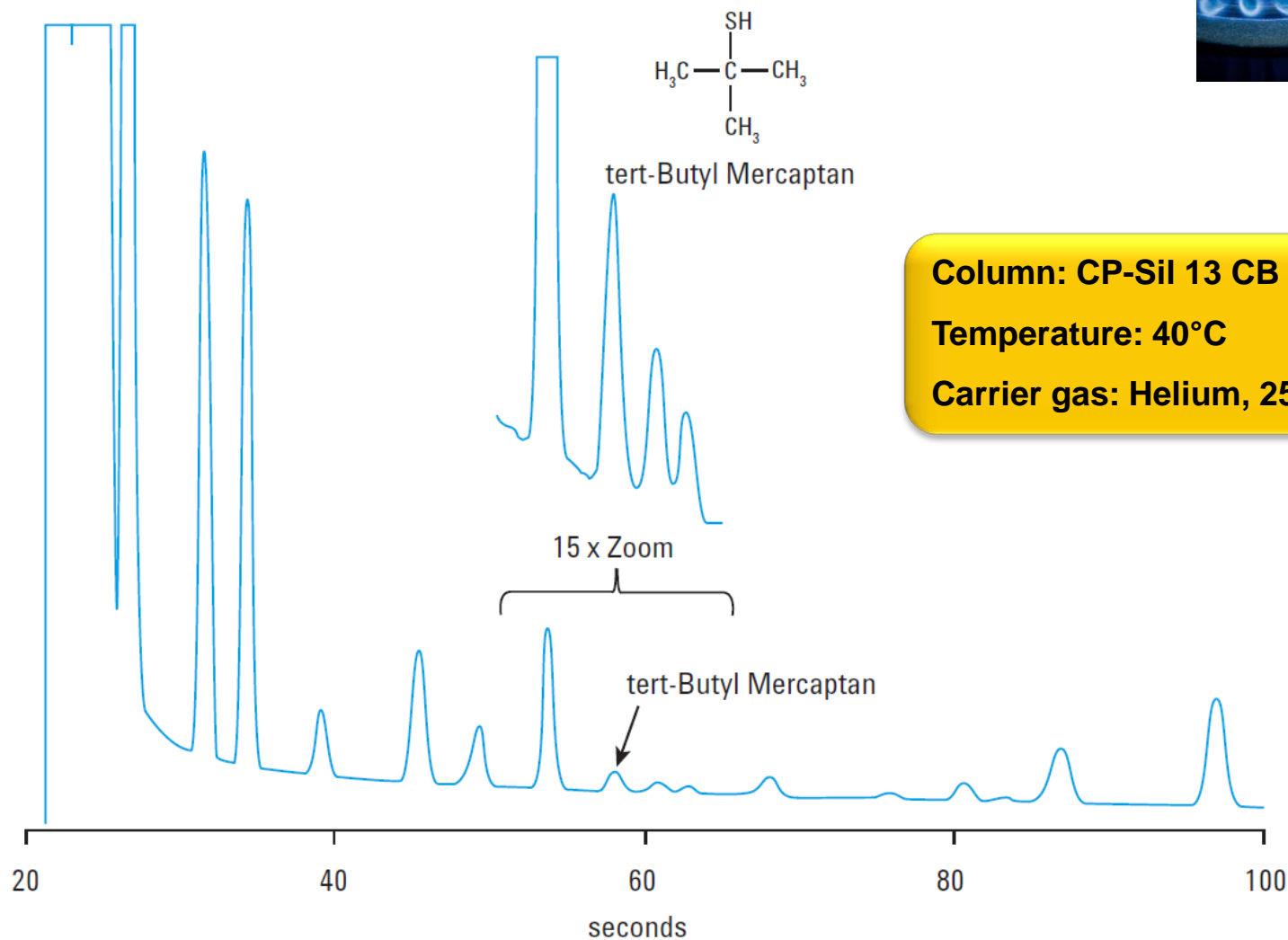
Seconds

120



Agilent Technologies

Natural Gas: *Tert-Butyl Mercaptan (TBM)*



Column: CP-Sil 13 CB for TBM

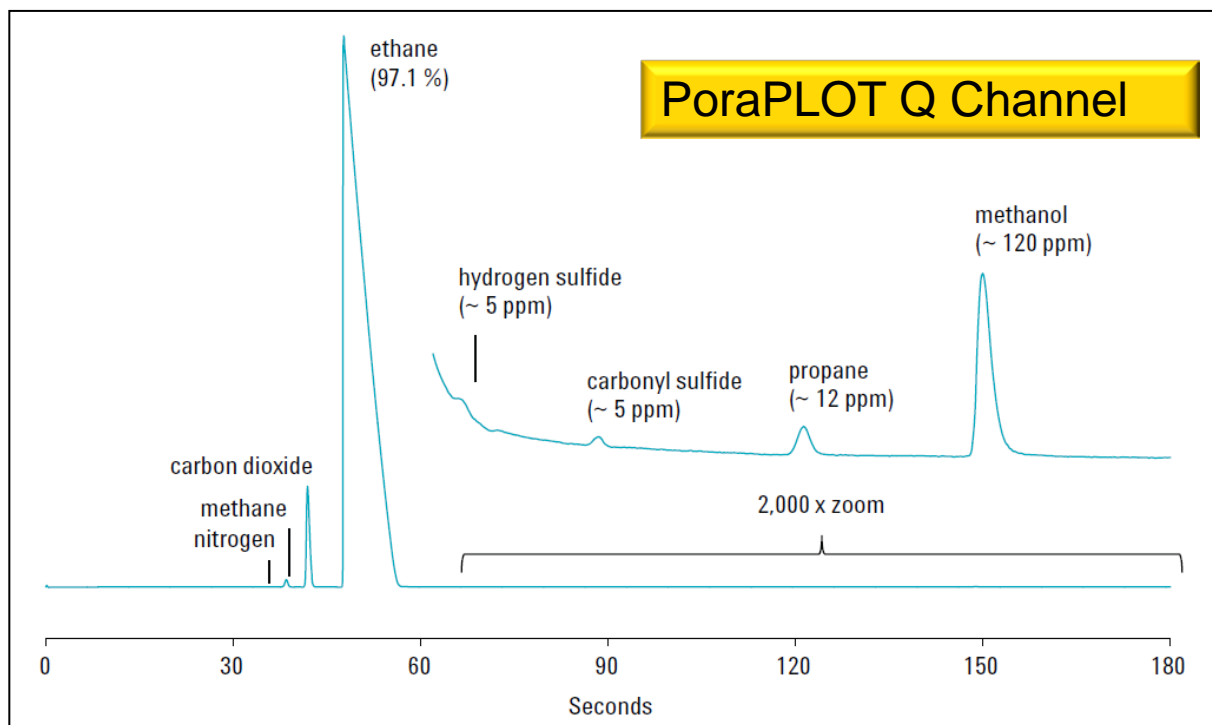
Temperature: 40°C

Carrier gas: Helium, 250 kPa



Agilent Technologies

Liquefied ethane stream



Single analysis for:

- Composition analysis
- Trace levels of H₂S for pipeline corrosion
- Trace levels methanol for catalyst protection
- Auto ranging micro TCD → high and low levels in single run



"The 490-PRO Micro GC provides outstanding accuracy and longevity, requiring no maintenance over long periods of time. Two Micro GC's, installed by QC LAB in 1994, are still functioning and providing over 450 analyses per day, without any repair or loss of service."

Serge Syz, QC LAB Inc, Calgary, Canada

[Document number: 5991-1817EN](#)

Versatility of Multi-Channel Simultaneous Analysis

CP-PoraPLOT U

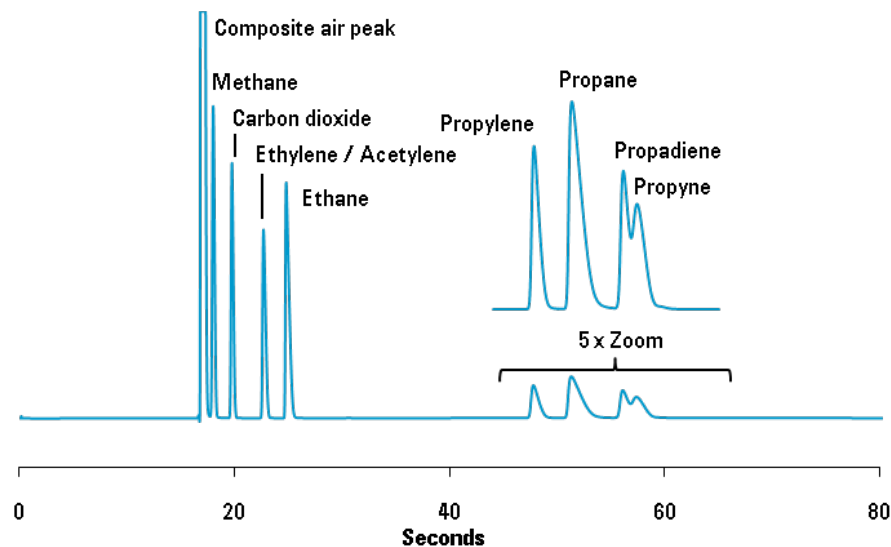
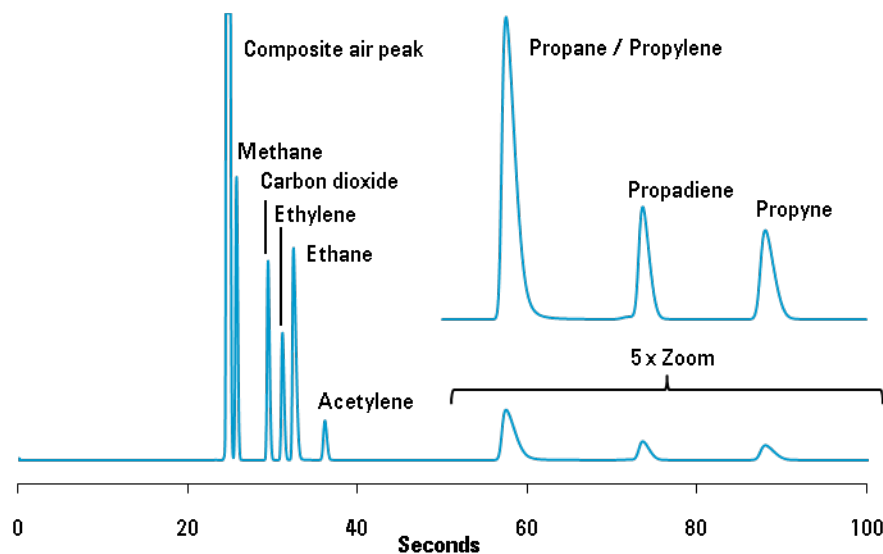
- Separate ethane, ethylene and acetylene
- Propane and propylene will co elute

CP-PoraPLOT Q

- Propane and propylene separated
- Co elution of ethylene and acetylene

Array of chemistry to fit unique application

Document number: 5990-9165EN



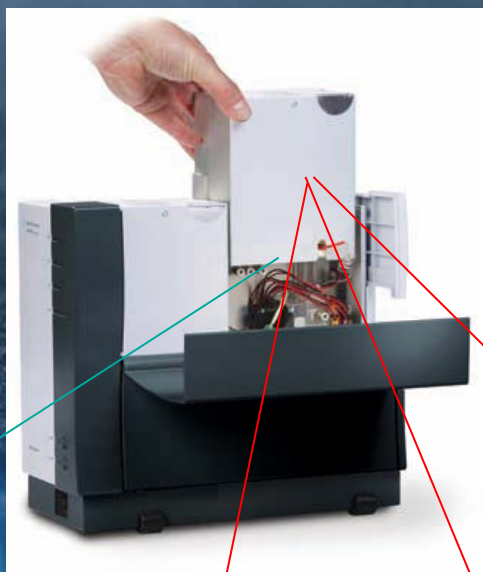
Agilent Technologies

Agilent Restricted
October 13

Advantages of Using a Micro GC in the Nat Gas Market

- Micro GCs offer unprecedented speed
- Micro GCs can be deployed throughout the entire process
- Micro GCs are flexible and can be 'fit for purpose'
- Data is used for both compliance and control
- The data is actionable AND defensible

Unique Features of a Micro GC

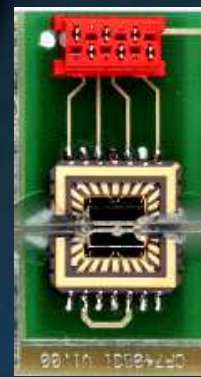
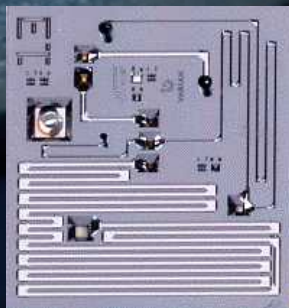


MICRO EGC

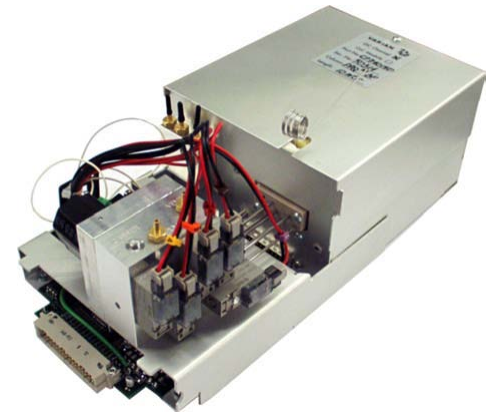
**CHIP
INJECTOR**

**GC
COLUMN**

MICRO TCD



Flexibility is Essential



Agilent 490 Micro GC column type overview

Application overview		
Column short name	Column type	Application
MS5A	CP-MolSieve 5Å	Permanent gases (N ₂ / O ₂ separation), methane, CO, (20m required for O ₂ / Ar baseline separation). Natural gas and Biogas analysis.
HSA	Hayesep A	Hydrocarbons C1-C3, N ₂ , CO ₂ , air, volatile solvents, Natural gas analysis.
5CB	CP-Sil 5 CB	Hydrocarbons C3-C10, aromatics, organic solvents, SO ₂ . Natural gas analysis.
19CB	CP-Sil 19 CB	Hydrocarbons C4-C10, volatile solvents, BTEX.
52CB	CP-Wax 52 CB	Polar volatile solvents, BTEX.
AlOx	CP-Al ₂ O ₃	Light hydrocarbons C1-C5 saturated and un-saturated. Refinery gas analysis.
PPU	PoraPLOT U	Hydrocarbons C1-C6, halocarbons/freons, anesthesia gases, H ₂ S, CO ₂ , volatile solvents. Biogas analysis. Separation of ethane, ethylene and acetylene.
PPQ	PoraPLOT Q	Hydrocarbons C1-C6, halocarbons/freons, anesthesia gases, H ₂ S, CO ₂ , volatile solvents. Separation propylene and propane, coelution of ethylene and acetylene.
COX	CP-COX	CO, CO ₂ , H ₂ , Air (coelution of N ₂ and O ₂), CH ₄ .
19CB THT	CP-Sil 19 CB for THT	THT and C3-C6 ⁺ in Natural gas.
13CB TBM	CP-Sil 13 CB TBM	TBM and C3-C6 ⁺ in Natural gas.
MES NGA	MES for NGA	MES in Natural gas.



Agilent GC Portfolio

Micro GC



GC



GC-MS



Sample
Handling



Column
Technology

We stand ready!



