

SIMPLIFY AND ACCELERATE YOUR PESTICIDE SCREENING

The Measure of Confidence



Agilent GC/MSD Pesticide Analyzer

Eliminate the need for tedious manual method development with a fully configured and factory-tested Pesticide Analyzer

Based on Agilent's 5977A Series GC/MSD and 7890B GC System, our user-friendly GC/MSD Pesticide Analyzer quickly screens and quantitates large numbers of pesticides and endocrine disruptors in a single analysis. Its screening methods conform to the latest worldwide pesticide testing requirements. With inlet, column, capillary flow technology, and software tools all installed and configured in the factory, and the Analyzer pre-tested for pesticide analysis – you can save time for method development.

Screen *more* pesticides... in *less* time

Agilent's GC/MSD Pesticide Analyzer makes use of productivity-boosting GC/MS technologies that allow you to:

- Increase the number of targets screened
- Differentiate target compounds from matrix interference
- Reduce the analysis time required per sample
- Perform a complete screening and quantitation in 2-3 minutes
- Produce consistent, high-quality results immediately after installation

The following components are included with Agilent's Pesticide Analyzer – saving you time and money:

- Pesticide checkout samples
- Retention Time Locked application-specific column, ensuring reliable database matching
- Video training tutorials facilitate learning of more advanced Analyzer features
- Quick-start guide and Application Note that demonstrate how to run the screening method provided with the Analyzer
- CD-ROM with analysis methods, data files, and report



Agilent Technologies

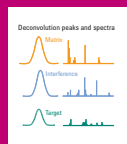
These built-in features make it *faster* and *easier* to screen large numbers of target compounds in complex matrices



Multimode Inlet (MMI) with large-volume injection enhances trace-level detection and adds flexibility by including standard split/splitless capabilities.



Retention Time Locking (RTL) for consistent retention times after column maintenance and easy matching with the 927-compound Pesticides and Endocrine Disruptors database.



Deconvolution Reporting Software (DRS) for fast data review in 2-3 minutes per sample, with screening and quantitation in one run.



Capillary Flow Technology (CFT) and backflush shorten run times, reduce chemical background, extend column life, and reduce frequency of source cleaning.

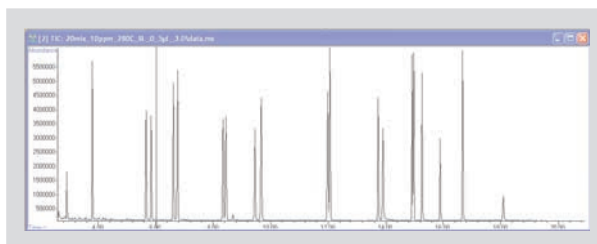
Put your lab on the productivity fast track.

Contact your local Agilent Representative or Agilent Authorized Distributor

Call **800-227-9770** (in the U.S. or Canada) or visit www.agilent.com/chem/applikits

This information is subject to change without notice.
© Agilent Technologies, Inc. 2013
Printed in U.S.A., April 10, 2013
5990-5310EN

The Pesticide Analyzer will get your lab on the *fast track* to better broad-range screening



Running the pesticides checkout sample: A quick-start guide included with Agilent's GC/MSD Pesticide Analyzer shows you how to load the pesticide method, relock the method to get consistent retention times, and run the checkout sample.

MSD Deconvolution Report				Adjacent Peak Subtraction = 1				
Sample Name: Checkout mix 10ppm				Resolution = High				
Data File: C:\msdchem\1				Sensitivity = High				
1\DATA\20mix_10ppm_280C_SL_0_5ul_3.D				Shape Requirements = Medium				
Date/Time: 3:24:06 PM Wednesday, January 20, 2010								
The NIST library was searched for the components that were found in the AMDIS target library.								
		Amount (ng)			AMDIS		NIST	
R.T.	Cas #	Compound Name	Chem station	AMDIS	Match	R.T. Diff	Reverse Match	Hit Num.
2.668	91203	Naphthalene	0.44	0.32	77	-0.3	84	2
2.9081	82737	Dichlorvos	8.93	8.16	98	-0.9	92	1
3.078	89838	Thymol	0.06	0.05	72	2.2	66	19
3.0807	3228033	Promecarb artifact [5-isopropyl-3-methylphenol]			69	-11.0		
3.0807	98544	Phenol, p-tert-butyl-					81	1
3.7946	7786347	Mevinphos	23.91	23.2	99	-0.4	92	2
3.9880	208968	Acenaphthylene	0.08	0.07	90	0.9	83	2
5.6438	55283686	Ethalfuralin	1.44	1.34	95	0.3	92	1
5.8263	1582098	Trifluralin	6.62	6.36	96	0.9	91	1
6.5910	1912249	Atrazine	14.05	12.86	97	1.4	92	1
6.6805	139402	Propazine			71	-0.1	74	1
6.6920	319857	BHC beta isomer			55	11.0	82	5
6.7348	58899	Lindane	9.37	8.52	98	0.5	91	4
6.9259	85018	Phenanthrene			57	1.8	80	2
8.3062	5598130	Chlorpyrifos Methyl	10.6	9.46	97	1.2	92	1

A DRS Checkout Report: You can analyze your results quickly using Deconvolution Reporting Software (DRS) and the RTL Pesticides database.

Ordering information:

Order an Agilent **5977A Series GC/MSD** along with an Agilent **7890B GC system** with one of the following configurations:

- **G3445B#451 Pesticide DRS Screening GC/MSD Analyzer**
- **SP1 7890-0457: Japanese Positive List DRS Screening GC/MSD Analyzer**



Agilent Technologies