



PYROPROBE 5000

PYROPROBE 5000

The CDS Pyroprobe® Model 5000 is the most advanced thermal sample preparation instrument available.

Platinum filaments are rapidly heated for pulse pyrolysis work, or slowly heated with controlled rates for programmed analyses.

Set temperatures in 1°C increments to 1400°C for a wide heating range and more precise pyrolysis temperatures. Analytical runs may be programmed for up to eight steps per sample, with automatic control of the on-line valve, interface temperature, GC ready sensing and GC start for each step. When configured with the trapping option, the Pyroprobe® may be used to collect analytes from slow rate pyrolysis, thermal desorption or reactant gas pyrolysis.

The unique interfacing design permits a direct pyrolysis path to the GC inlet or rapid sample heating and transfer to the trap without interrupting the pneumatics of the GC.

Simple PC control of all parameters is presented in an easy to program window, permitting method development, storage, notation and editing.



Pyroprobe 5000

Product Features

- Platinum filament pyrolyzer for pulse pyrolysis and multistep, programmed pyrolysis
- Simplified sample loading
- Programmable interface
- Easy transfer line connection to GC
- PC control
- Three modes of operation run, dry, clean - all user selectable
- Built-in trapping zone for:
 - thermal desorption
 - reactant gas operation
 - slow rate pyrolysis with trapping
- Interface directly to GC or to trap
- Specify up to eight runs per sample—automatically
- Window-based CDS 5000 DCI Control

Specifications Model 5000

Pulse Pyrolysis

Filament Temperature

Programmable in 1°C increments to 1400°C

Heating Rates

0.01 to 20.0°C/ms (10 to 20,000°C/second)

Clean and Dry

User selectable

Programmed Pyrolysis

Heating Rates

0.01 to 999.9°C/sec and 0.01 to 999.9°C/min

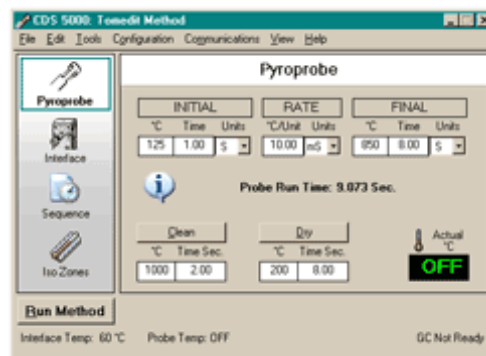
Multiple Steps

Each step may include GC start

Interface

1500 Valved Interface

Isothermal temperature, set in 1°C increments



Pyroprobe 5150



Specifications Model 5150

- all 5000 plus..

Multiple steps

Each interface step includes initial, ramp and final
Each step may include Pyroprobe® and GC start

Interface

Low-mass programmable zone on 5150 unit

Temperature

Settable in 1°C/min increments to 350°C

Heating Rates

Programmable in 1°C/min increments to 60°C/min

Heated Zones

4 auxiliary zones

Valve Oven

Settable in 1°C increments to 300°C

Transfer Line

Settable in 1°C increments to 325



INGENIERIA ANALITICA S.L.

Av. Cerdanyola,73
Apartado 282
08190 SANT CUGAT DEL VALLES
(Barcelona-Spain)

Teléfono: 902456677
Fax: 902466667
Email: inf@ingenieria-analitica.com
www.ingenieria-analitica.com

*la ingeniería en analítica
instrumental. un nuevo concepto*

Specifications Model 5200

- for headspace trapping and reactant gas pyrolysis
Interface:Pyrolysis to built-in trap or direct to GC

Temperature: Settable in 1°C increments to 350°C

Heating Rates: Programmable in 1°C/min increments to 60°C/min

Trapping Tube : Ambient o 350°C



ACCESORIOS PARA PIROLIZADORES. Consúltenos

